



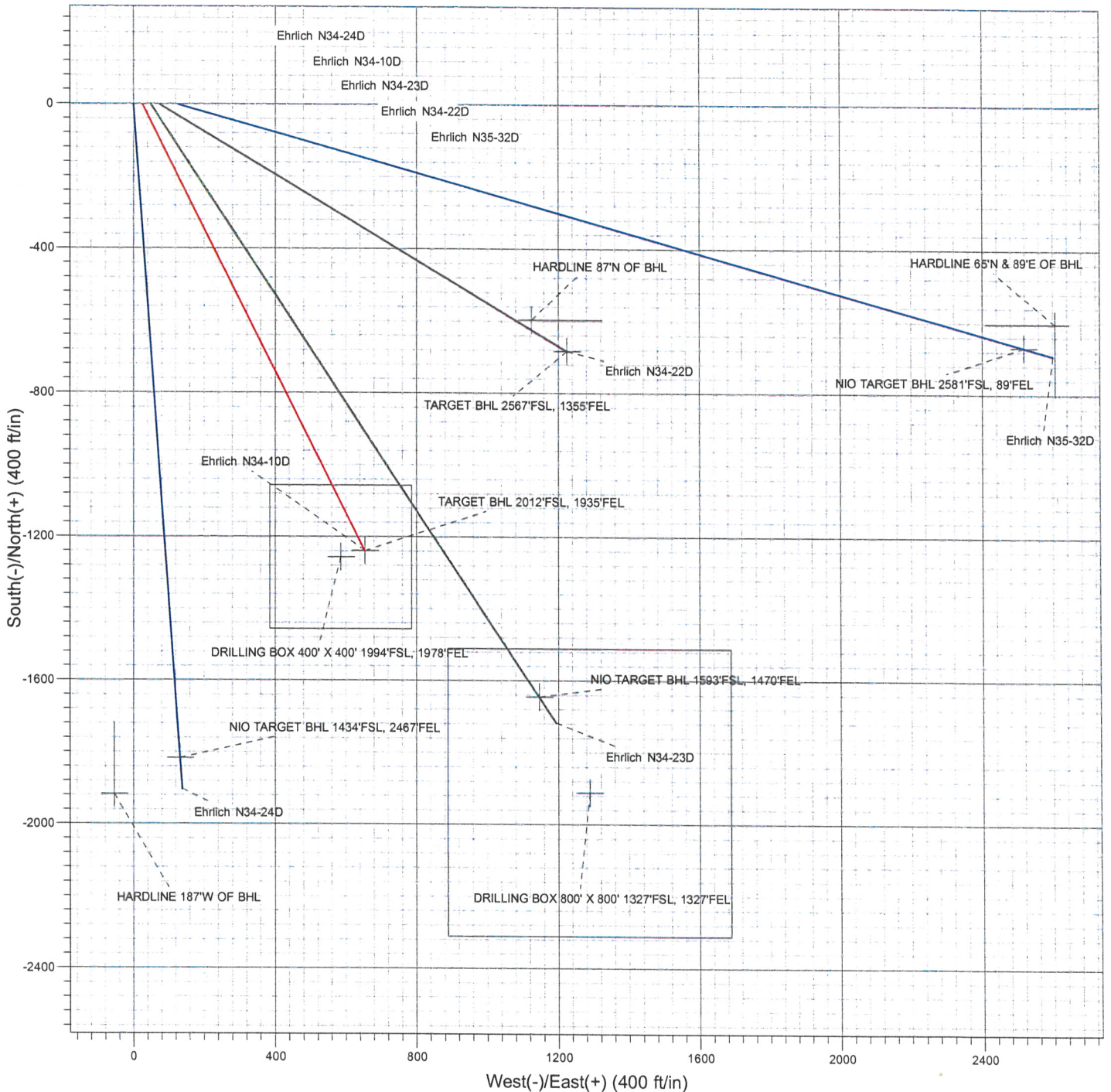
Multi Well Plan

Surface Location: Ehrlich N36-32D Pad Sec.34-T5N-R67W

North American Datum 1983 , US State Plane 1983 , Colorado Northern Zone

Ground Elevation: 4866.0

| +N/-S | +E/-W | Northing | Easting | Latitude | Longitude | Slot |
|-------|-------|------------|------------|------------------|-------------------|------|
| 0.0 | 0.0 | 1373805.82 | 3173055.51 | 40° 21' 28.206 N | 104° 52' 44.472 W | |



ENSIGN
Directional