

KERR MCGEE OIL & GAS ONSHORE LP

Location: COLORADO Slot: SLOT#02 HUNT 27-5 (659°FNL & 616°FEL)
 Field: WELD COUNTY (ANADARKO) Well: HUNT 27-5
 Facility: SEC.05-T3N-R66W Wellbore: HUNT 27-5 PWB



Well Profile Data

Design Comment	MD (ft)	Inc (°)	Az (°)	TVD (ft)	Local N (ft)	Local E (ft)	DLS (°/100ft)	VS (ft)
Tie On	15.00	0.000	316.206	15.00	0.00	0.00	0.00	0.00
End of Tangent	700.00	0.000	316.206	700.00	0.00	0.00	0.00	0.00
End of Build (S)	1300.00	12.000	316.206	1295.62	45.19	-43.33	2.00	62.60
End of Tangent (S)	4751.67	12.000	316.206	4671.86	563.20	-539.98	0.00	780.24
End of Drop (S)	5351.67	0.000	316.206	5267.49	608.39	-583.31	2.00	842.85
End of Tangent	7959.18	0.000	316.206	7875.00	608.39	-583.31	0.00	842.85

Location Information

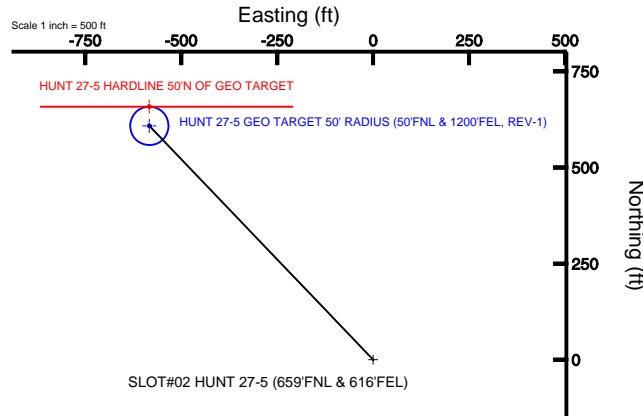
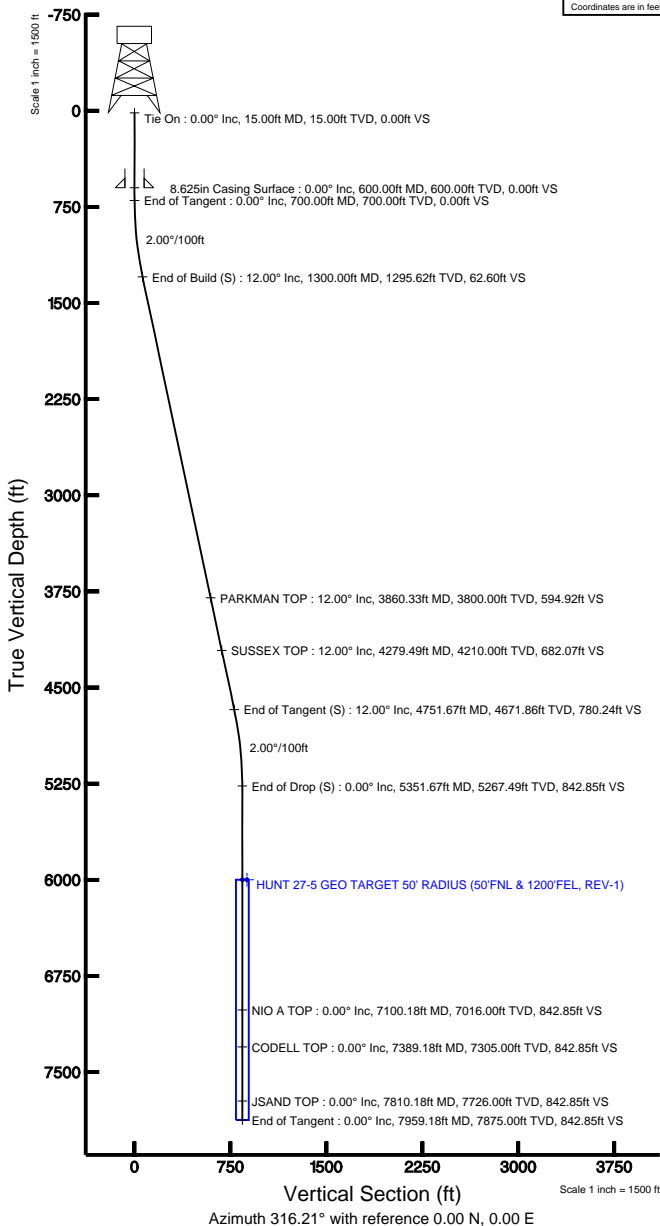
Facility Name			Grid East (USft)	Grid North (USft)	Latitude	Longitude
SEC.05-T3N-R66W			3195790.356	1336574.498	40°15'18.612"N	104°47'54.600"W
Slot	Local N (ft)	Local E (ft)	Grid East (USft)	Grid North (USft)	Latitude	Longitude
SLOT#02 HUNT 27-5 (659°FNL & 616°FEL)	1424.46	1233.63	3197012.624	1338006.603	40°15'32.688"N	104°47'38.688"W
Rig on SLOT#02 HUNT 27-5 (659°FNL & 616°FEL) (RT) to Mud line (Facility: SEC.05-T3N-R66W)					4796ft	
Mean Sea Level to Mud line (Facility: SEC.05-T3N-R66W)					0ft	
Rig on SLOT#02 HUNT 27-5 (659°FNL & 616°FEL) (RT) to Mean Sea Level					4796ft	

Targets

Name	MD (ft)	TVD (ft)	Local N (ft)	Local E (ft)	Grid East (USft)	Grid North (USft)	Latitude	Longitude
HUNT 27-5 GEO TARGET 50' RADIUS (50°FNL & 1200°FEL, REV-1)		6000.00	608.39	-583.31	3196424.52	1338612.31	40°15'38.700"N	104°47'46.212"W
HUNT 27-5 HARDLINE 50N OF GEO TARGET		6000.00	658.39	-583.31	3196424.12	1338662.30	40°15'39.194"N	104°47'46.212"W

Plot reference wellpath is HUNT 27-5 (REV-A.0) PWP

True vertical depths are referenced to Rig on SLOT#02 HUNT 27-5 (659°FNL & 616°FEL) (RT)	Grid System: NAD83 / Lambert Colorado State Planes, Northern Zone (501), US feet
Measured depths are referenced to Rig on SLOT#02 HUNT 27-5 (659°FNL & 616°FEL) (RT)	North Reference: True north
Rig on SLOT#02 HUNT 27-5 (659°FNL & 616°FEL) (RT) to Mean Sea Level: 4796 feet	Scale: True distance
Mean Sea Level to Mud line (Facility: SEC.05-T3N-R66W): 0 feet	Depths are in feet
Coordinates are in feet referenced to Slot	Created by: cookdam on 8/27/2009



B/GM (1945.0 to 2010.0) Dip: 67.01° Field: 53273.8 nT
 Magnetic North is 9.08 degrees East of True North (at 8/27/2009)

To correct azimuth from Magnetic to True add 9.08 degrees
 For example: if the Magnetic North Azimuth = 90 degs, then the Grid North Azimuth = 90 + 9.08 = 99.08



Planned Wellpath Report

HUNT 27-5 (REV-A.0) PWP

Page 1 of 5



INTEQ

REFERENCE WELLPATH IDENTIFICATION

Operator	KERR MCGEE OIL & GAS ONSHORE LP	Slot	SLOT#02 HUNT 27-5 (659'FNL & 616'FEL)
Area	COLORADO	Well	HUNT 27-5
Field	WELD COUNTY (ANADARKO)	Wellbore	HUNT 27-5 PWB
Facility	SEC.05-T3N-R66W		

REPORT SETUP INFORMATION

Projection System	NAD83 / Lambert Colorado State Planes, Northern Zone (501), US feet	Software System	WellArchitect® 2.0
North Reference	True	User	Cookdanm
Scale	0.999957	Report Generated	8/27/2009 at 11:37:33 AM
Convergence at slot	0.46° East	Database/Source file	WellArchitect_Denver/HUNT_27-5_PWB.xml

WELLPATH LOCATION

	Local coordinates		Grid coordinates		Geographic coordinates	
	North[ft]	East[ft]	Easting[USft]	Northing[USft]	Latitude	Longitude
Slot Location	1424.46	1233.63	3197012.62	1338008.60	40°15'32.688"N	104°47'38.688"W
Facility Reference Pt			3195790.36	1336574.50	40°15'18.612"N	104°47'54.600"W
Field Reference Pt			3197771.84	1268891.29	40°04'09.600"N	104°47'36.000"W

WELLPATH DATUM

Calculation method	Minimum curvature	Rig on SLOT#02 HUNT 27-5 (659'FNL & 616'FEL) (RT) to Facility Vertical Datum	4796.00
Horizontal Reference Pt	Slot	Rig on SLOT#02 HUNT 27-5 (659'FNL & 616'FEL) (RT) to Mean Sea Level	4796.00
Vertical Reference Pt	Rig on SLOT#02 HUNT 27-5 (659'FNL & 616'FEL) (RT)	Facility Vertical Datum to Mud Line (Facility)	0.00ft
MD Reference Pt	Rig on SLOT#02 HUNT 27-5 (659'FNL & 616'FEL) (RT)	Section Origin	N 0.00, 1
Field Vertical Reference	Mean Sea Level	Section Azimuth	316.21°



Planned Wellpath Report

HUNT 27-5 (REV-A.0) PWP

Page 2 of 5



REFERENCE WELLPATH IDENTIFICATION

Operator	KERR MCGEE OIL & GAS ONSHORE LP	Slot	SLOT#02 HUNT 27-5 (659'FNL & 616'FEL)
Area	COLORADO	Well	HUNT 27-5
Field	WELD COUNTY (ANADARKO)	Wellbore	HUNT 27-5 PWB
Facility	SEC.05-T3N-R66W		

WELLPATH DATA (91 stations) † = interpolated/extrapolated station

MD [ft]	Inclination [°]	Azimuth [°]	TVD [ft]	Vert Sect [ft]	North [ft]	East [ft]	DLS [°/100ft]	Comments
0.00†	0.000	316.206	0.00	0.00	0.00	0.00	0.00	
15.00	0.000	316.206	15.00	0.00	0.00	0.00	0.00	Tie On
115.00†	0.000	316.206	115.00	0.00	0.00	0.00	0.00	
215.00†	0.000	316.206	215.00	0.00	0.00	0.00	0.00	
315.00†	0.000	316.206	315.00	0.00	0.00	0.00	0.00	
415.00†	0.000	316.206	415.00	0.00	0.00	0.00	0.00	
515.00†	0.000	316.206	515.00	0.00	0.00	0.00	0.00	
615.00†	0.000	316.206	615.00	0.00	0.00	0.00	0.00	
700.00	0.000	316.206	700.00	0.00	0.00	0.00	0.00	End of Tangent
715.00†	0.300	316.206	715.00	0.04	0.03	-0.03	2.00	
815.00†	2.300	316.206	814.97	2.31	1.67	-1.60	2.00	
915.00†	4.300	316.206	914.80	8.06	5.82	-5.58	2.00	
1015.00†	6.300	316.206	1014.37	17.30	12.49	-11.97	2.00	
1115.00†	8.300	316.206	1113.55	30.01	21.66	-20.77	2.00	
1215.00†	10.300	316.206	1212.23	46.17	33.32	-31.95	2.00	
1300.00	12.000	316.206	1295.62	62.60	45.19	-43.33	2.00	End of Build (S)
1315.00†	12.000	316.206	1310.30	65.72	47.44	-45.48	0.00	
1415.00†	12.000	316.206	1408.11	86.51	62.45	-59.87	0.00	
1515.00†	12.000	316.206	1505.92	107.30	77.46	-74.26	0.00	
1615.00†	12.000	316.206	1603.74	128.09	92.46	-88.65	0.00	
1715.00†	12.000	316.206	1701.55	148.89	107.47	-103.04	0.00	
1815.00†	12.000	316.206	1799.37	169.68	122.48	-117.43	0.00	
1915.00†	12.000	316.206	1897.18	190.47	137.49	-131.82	0.00	
2015.00†	12.000	316.206	1995.00	211.26	152.49	-146.21	0.00	
2115.00†	12.000	316.206	2092.81	232.05	167.50	-160.60	0.00	
2215.00†	12.000	316.206	2190.63	252.84	182.51	-174.98	0.00	
2315.00†	12.000	316.206	2288.44	273.63	197.52	-189.37	0.00	
2415.00†	12.000	316.206	2386.26	294.42	212.52	-203.76	0.00	
2515.00†	12.000	316.206	2484.07	315.22	227.53	-218.15	0.00	
2615.00†	12.000	316.206	2581.89	336.01	242.54	-232.54	0.00	
2715.00†	12.000	316.206	2679.70	356.80	257.55	-246.93	0.00	
2815.00†	12.000	316.206	2777.52	377.59	272.56	-261.32	0.00	
2915.00†	12.000	316.206	2875.33	398.38	287.56	-275.71	0.00	
3015.00†	12.000	316.206	2973.15	419.17	302.57	-290.10	0.00	
3115.00†	12.000	316.206	3070.96	439.96	317.58	-304.48	0.00	
3215.00†	12.000	316.206	3168.78	460.75	332.59	-318.87	0.00	
3315.00†	12.000	316.206	3266.59	481.54	347.59	-333.26	0.00	
3415.00†	12.000	316.206	3364.41	502.34	362.60	-347.65	0.00	
3515.00†	12.000	316.206	3462.22	523.13	377.61	-362.04	0.00	
3615.00†	12.000	316.206	3560.03	543.92	392.62	-376.43	0.00	
3715.00†	12.000	316.206	3657.85	564.71	407.62	-390.82	0.00	
3815.00†	12.000	316.206	3755.66	585.50	422.63	-405.21	0.00	
3860.33†	12.000	316.206	3800.00	594.92	429.43	-411.73	0.00	PARKMAN TOP
3915.00†	12.000	316.206	3853.48	606.29	437.64	-419.60	0.00	
4015.00†	12.000	316.206	3951.29	627.08	452.65	-433.98	0.00	



Planned Wellpath Report

HUNT 27-5 (REV-A.0) PWP

Page 3 of 5



INTEQ

REFERENCE WELLPATH IDENTIFICATION

Operator	KERR MCGEE OIL & GAS ONSHORE LP	Slot	SLOT#02 HUNT 27-5 (659'FNL & 616'FEL)
Area	COLORADO	Well	HUNT 27-5
Field	WELD COUNTY (ANADARKO)	Wellbore	HUNT 27-5 PWB
Facility	SEC.05-T3N-R66W		

WELLPATH DATA (91 stations) † = interpolated/extrapolated station

MD [ft]	Inclination [°]	Azimuth [°]	TVD [ft]	Vert Sect [ft]	North [ft]	East [ft]	DLS [°/100ft]	Comments
4115.00†	12.000	316.206	4049.11	647.87	467.66	-448.37	0.00	
4215.00†	12.000	316.206	4146.92	668.67	482.66	-462.76	0.00	
4279.49†	12.000	316.206	4210.00	682.07	492.34	-472.04	0.00	SUSSEX TOP
4315.00†	12.000	316.206	4244.74	689.46	497.67	-477.15	0.00	
4415.00†	12.000	316.206	4342.55	710.25	512.68	-491.54	0.00	
4515.00†	12.000	316.206	4440.37	731.04	527.69	-505.93	0.00	
4615.00†	12.000	316.206	4538.18	751.83	542.69	-520.32	0.00	
4715.00†	12.000	316.206	4636.00	772.62	557.70	-534.71	0.00	
4751.67	12.000	316.206	4671.86	780.24	563.20	-539.98	0.00	End of Tangent (S)
4815.00†	10.733	316.206	4733.95	792.73	572.21	-548.62	2.00	
4915.00†	8.733	316.206	4832.51	809.63	584.42	-560.32	2.00	
5015.00†	6.733	316.206	4931.59	823.09	594.13	-569.63	2.00	
5115.00†	4.733	316.206	5031.09	833.08	601.34	-576.55	2.00	
5215.00†	2.733	316.206	5130.87	839.59	606.04	-581.05	2.00	
5315.00†	0.733	316.206	5230.82	842.61	608.22	-583.15	2.00	
5351.67	0.000	316.206	5267.49 ¹	842.85	608.39	-583.31	2.00	End of Drop (S)
5415.00†	0.000	316.206	5330.82	842.85	608.39	-583.31	0.00	
5515.00†	0.000	316.206	5430.82	842.85	608.39	-583.31	0.00	
5615.00†	0.000	316.206	5530.82	842.85	608.39	-583.31	0.00	
5715.00†	0.000	316.206	5630.82	842.85	608.39	-583.31	0.00	
5815.00†	0.000	316.206	5730.82	842.85	608.39	-583.31	0.00	
5915.00†	0.000	316.206	5830.82	842.85	608.39	-583.31	0.00	
6015.00†	0.000	316.206	5930.82	842.85	608.39	-583.31	0.00	
6115.00†	0.000	316.206	6030.82	842.85	608.39	-583.31	0.00	
6215.00†	0.000	316.206	6130.82	842.85	608.39	-583.31	0.00	
6315.00†	0.000	316.206	6230.82	842.85	608.39	-583.31	0.00	
6415.00†	0.000	316.206	6330.82	842.85	608.39	-583.31	0.00	
6515.00†	0.000	316.206	6430.82	842.85	608.39	-583.31	0.00	
6615.00†	0.000	316.206	6530.82	842.85	608.39	-583.31	0.00	
6715.00†	0.000	316.206	6630.82	842.85	608.39	-583.31	0.00	
6815.00†	0.000	316.206	6730.82	842.85	608.39	-583.31	0.00	
6915.00†	0.000	316.206	6830.82	842.85	608.39	-583.31	0.00	
7015.00†	0.000	316.206	6930.82	842.85	608.39	-583.31	0.00	
7100.18†	0.000	316.206	7016.00	842.85	608.39	-583.31	0.00	NIO A TOP
7115.00†	0.000	316.206	7030.82	842.85	608.39	-583.31	0.00	
7215.00†	0.000	316.206	7130.82	842.85	608.39	-583.31	0.00	
7315.00†	0.000	316.206	7230.82	842.85	608.39	-583.31	0.00	
7389.18†	0.000	316.206	7305.00	842.85	608.39	-583.31	0.00	CODELL TOP
7415.00†	0.000	316.206	7330.82	842.85	608.39	-583.31	0.00	
7515.00†	0.000	316.206	7430.82	842.85	608.39	-583.31	0.00	
7615.00†	0.000	316.206	7530.82	842.85	608.39	-583.31	0.00	
7715.00†	0.000	316.206	7630.82	842.85	608.39	-583.31	0.00	
7810.18†	0.000	316.206	7726.00	842.85	608.39	-583.31	0.00	JSAND TOP
7815.00†	0.000	316.206	7730.82	842.85	608.39	-583.31	0.00	
7915.00†	0.000	316.206	7830.82	842.85	608.39	-583.31	0.00	



Planned Wellpath Report

HUNT 27-5 (REV-A.0) PWP

Page 4 of 5



INTEQ

REFERENCE WELLPATH IDENTIFICATION

Operator	KERR MCGEE OIL & GAS ONSHORE LP	Slot	SLOT#02 HUNT 27-5 (659'FNL & 616'FEL)
Area	COLORADO	Well	HUNT 27-5
Field	WELD COUNTY (ANADARKO)	Wellbore	HUNT 27-5 PWB
Facility	SEC.05-T3N-R66W		

WELLPATH DATA (91 stations)

MD [ft]	Inclination [°]	Azimuth [°]	TVD [ft]	Vert Sect [ft]	North [ft]	East [ft]	DLS [°/100ft]	Comments
7959.18	0.000	316.206	7875.00	842.85	608.39	-583.31	0.00	End of Tangent

HOLE & CASING SECTIONS Ref Wellbore: HUNT 27-5 PWB Ref Wellpath: HUNT 27-5 (REV-A.0) PWP

String/Diameter	Start MD [ft]	End MD [ft]	Interval [ft]	Start TVD [ft]	End TVD [ft]	Start N/S [ft]	Start E/W [ft]	End N/S [ft]	End E/W [ft]
12.25in Open Hole	15.00	600.00	585.00	15.00	600.00	0.00	0.00	0.00	0.00
8.625in Casing Surface	15.00	600.00	585.00	15.00	600.00	0.00	0.00	0.00	0.00
7.875in Open Hole	600.00	7959.18	7359.18	600.00	7875.00	0.00	0.00	608.39	-583.31

TARGETS

Name	MD [ft]	TVD [ft]	North [ft]	East [ft]	Grid East [srv ft]	Grid North [srv ft]	Latitude	Longitude	Shape
1) HUNT 27-5 GEO TARGET 50' RADIUS (50'FNL & 1200'FEL, REV-1)		6000.00	608.39	-583.31	3196424.52	1338612.31	40°15'38.700"N	104°47'46.212"W	circle
HUNT 27-5 HARDLINE 50'N OF GEO TARGET		6000.00	658.39	-583.31	3196424.12	1338662.30	40°15'39.194"N	104°47'46.212"W	point

SURVEY PROGRAM Ref Wellbore: HUNT 27-5 PWB Ref Wellpath: HUNT 27-5 (REV-A.0) PWP

Start MD [ft]	End MD [ft]	Positional Uncertainty Model	Log Name/Comment	Wellbore
15.00	7959.18	MTC (Collar, post-2000) (Standard)		HUNT 27-5 PWB



Planned Wellpath Report

HUNT 27-5 (REV-A.0) PWP

Page 5 of 5



INTEQ

REFERENCE WELLPATH IDENTIFICATION

Operator	KERR MCGEE OIL & GAS ONSHORE LP	Slot	SLOT#02 HUNT 27-5 (659'FNL & 616'FEL)
Area	COLORADO	Well	HUNT 27-5
Field	WELD COUNTY (ANADARKO)	Wellbore	HUNT 27-5 PWB
Facility	SEC.05-T3N-R66W		

WELLPATH COMMENTS

MD [ft]	Inclination [°]	Azimuth [°]	TVD [ft]	Comment
3860.33	12.000	316.206	3800.00	PARKMAN TOP
4279.49	12.000	316.206	4210.00	SUSSEX TOP
7100.18	0.000	316.206	7016.00	NIO A TOP
7389.18	0.000	316.206	7305.00	CODELL TOP
7810.18	0.000	316.206	7726.00	JSAND TOP