

# KERR MCGEE OIL & GAS ONSHORE LP

Location: COLORADO Slot: SLOT#03 HUNT 21-5 (660°FNL & 632°FEL )  
 Field: WELD COUNTY (ANADARKO) Well: HUNT 21-5  
 Facility: SEC.05-T3N-R66W Wellbore: HUNT 21-5 PWB



## Well Profile Data

Design Comment	MD (ft)	Inc (°)	Az (°)	TVD (ft)	Local N (ft)	Local E (ft)	DLS (°/100ft)	VS (ft)
Tie On	15.00	0.000	250.682	15.00	0.00	0.00	0.00	0.00
End of Tangent	800.00	0.000	250.682	800.00	0.00	0.00	0.00	0.00
Build (S)	2175.00	27.500	250.682	2122.81	-107.08	-305.47	2.00	323.69
End of Tangent (S)	5154.18	27.500	250.682	4765.38	-562.16	-1603.64	0.00	1699.32
Drop (S)	6529.18	0.000	250.682	6088.19	-669.24	-1909.11	2.00	2023.01
End of Tangent	8315.99	0.000	250.682	7875.00	-669.24	-1909.11	0.00	2023.01

## Targets

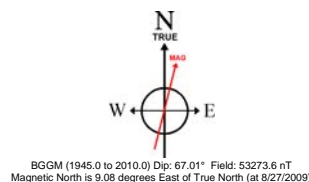
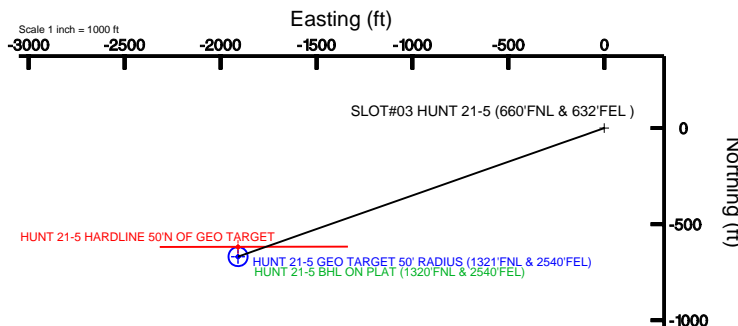
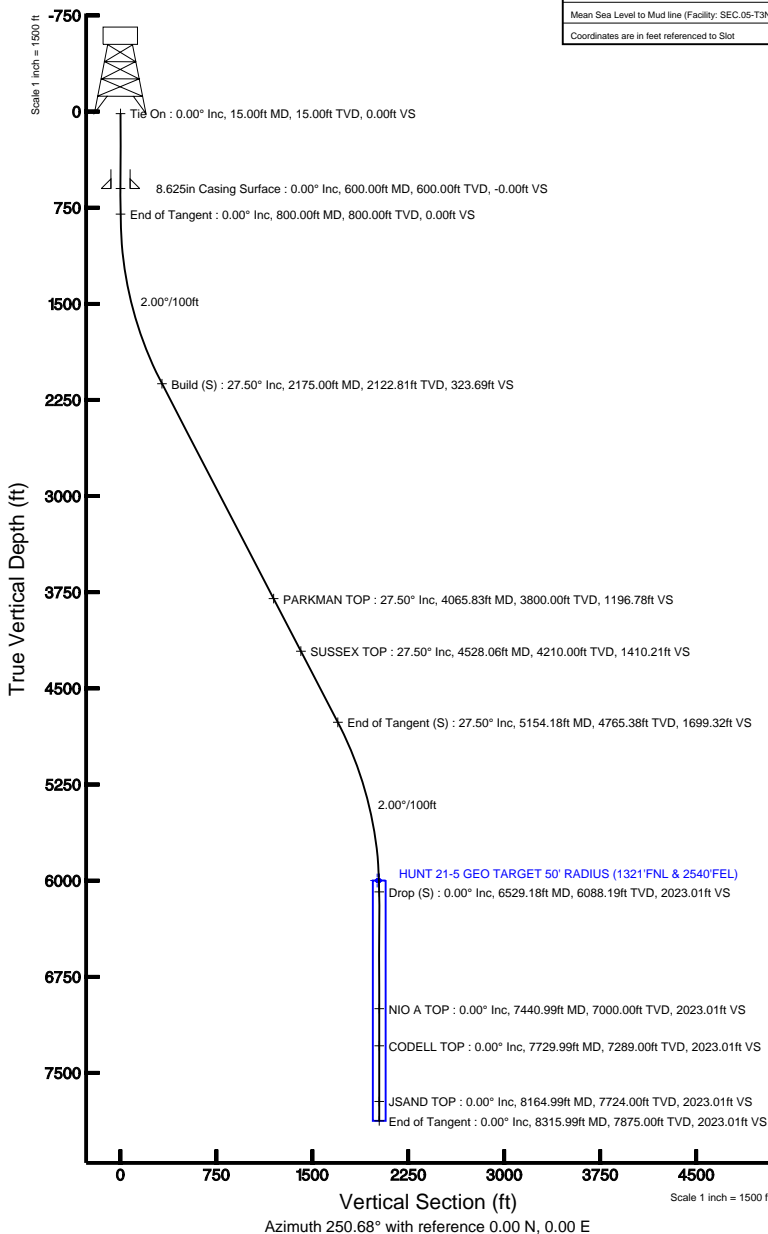
Name	MD (ft)	TVD (ft)	Local N (ft)	Local E (ft)	Grid East (USft)	Grid North (USft)	Latitude	Longitude
HUNT 21-5 BHL ON PLAT (1320FNL & 2540FEL)		6000.00	-670.24	-1909.11	3195092.25	1337323.08	40°15'26.064"N	104°48'03.528"W
HUNT 21-5 GEO TARGET 50' RADIUS (1321FNL & 2540FEL)		6000.00	-669.24	-1909.11	3195092.24	1337324.09	40°15'26.074"N	104°48'03.528"W
HUNT 21-5 HARDLINE 50'N OF GEO TARGET		6000.00	-619.24	-1909.11	3195091.84	1337374.08	40°15'26.568"N	104°48'03.528"W

## Location Information

Facility Name			Grid East (USft)	Grid North (USft)	Latitude	Longitude
SEC.05-T3N-R66W			3195790.356	1336574.498	40°15'18.612"N	104°47'54.600"W
Slot	Local N (ft)	Local E (ft)	Grid East (USft)	Grid North (USft)	Latitude	Longitude
SLOT#03 HUNT 21-5 (660'FNL & 632'FEL )	1424.45	1216.88	3196995.879	1338008.470	40°15'32.688"N	104°47'38.904"W
Rig on SLOT#03 HUNT 21-5 (660'FNL & 632'FEL ) (RT) to Mud line (Facility: SEC.05-T3N-R66W)					4796ft	
Mean Sea Level to Mud line (Facility: SEC.05-T3N-R66W)					0ft	
Rig on SLOT#03 HUNT 21-5 (660'FNL & 632'FEL ) (RT) to Mean Sea Level					4796ft	

## Plot reference wellpath is HUNT 21-5 (REV-A.0) PWP

True vertical depths are referenced to Rig on SLOT#03 HUNT 21-5 (660°FNL & 632°FEL ) (RT)	Grid System: NAD83 / Lambert Colorado State Planes, Northern Zone (501), US feet
Measured depths are referenced to Rig on SLOT#03 HUNT 21-5 (660°FNL & 632°FEL ) (RT)	North Reference: True north
Rig on SLOT#03 HUNT 21-5 (660°FNL & 632°FEL ) (RT) to Mean Sea Level: 4796 feet	Scale: True distance
Mean Sea Level to Mud line (Facility: SEC.05-T3N-R66W): 0 feet	Depths are in feet
Coordinates are in feet referenced to Slot	Created by: cookdanm on 8/27/2009



To correct azimuth from Magnetic to True add 9.08 degrees  
 For example: if the Magnetic North Azimuth = 90 degs, then the Grid North Azimuth = 90 + 9.08 = 99.08



# Planned Wellpath Report

HUNT 21-5 (REV-A.0) PWP

Page 1 of 5



INTEQ

## REFERENCE WELLPATH IDENTIFICATION

Operator	KERR MCGEE OIL & GAS ONSHORE LP	Slot	SLOT#03 HUNT 21-5 (660'FNL & 632'FEL )
Area	COLORADO	Well	HUNT 21-5
Field	WELD COUNTY (ANADARKO)	Wellbore	HUNT 21-5 PWB
Facility	SEC.05-T3N-R66W		

## REPORT SETUP INFORMATION

Projection System	NAD83 / Lambert Colorado State Planes, Northern Zone (501), US feet	Software System	WellArchitect® 2.0
North Reference	True	User	Cookdanm
Scale	0.999957	Report Generated	8/27/2009 at 12:17:18 PM
Convergence at slot	0.46° East	Database/Source file	WellArchitect_Denver/HUNT_21-5_PWB.xml

## WELLPATH LOCATION

	Local coordinates		Grid coordinates		Geographic coordinates	
	North[ft]	East[ft]	Easting[USft]	Northing[USft]	Latitude	Longitude
Slot Location	1424.45	1216.88	3196995.88	1338008.47	40°15'32.688"N	104°47'38.904"W
Facility Reference Pt			3195790.36	1336574.50	40°15'18.612"N	104°47'54.600"W
Field Reference Pt			3197771.84	1268891.29	40°04'09.600"N	104°47'36.000"W

## WELLPATH DATUM

Calculation method	Minimum curvature	Rig on SLOT#03 HUNT 21-5 (660'FNL & 632'FEL ) (RT) to Facility Vertical Datum	4796.00
Horizontal Reference Pt	Slot	Rig on SLOT#03 HUNT 21-5 (660'FNL & 632'FEL ) (RT) to Mean Sea Level	4796.00
Vertical Reference Pt	Rig on SLOT#03 HUNT 21-5 (660'FNL & 632'FEL ) (RT)	Facility Vertical Datum to Mud Line (Facility)	0.00ft
MD Reference Pt	Rig on SLOT#03 HUNT 21-5 (660'FNL & 632'FEL ) (RT)	Section Origin	N 0.00,
Field Vertical Reference	Mean Sea Level	Section Azimuth	250.68°



# Planned Wellpath Report

HUNT 21-5 (REV-A.0) PWP

Page 2 of 5



INTEQ

## REFERENCE WELLPATH IDENTIFICATION

Operator	KERR MCGEE OIL & GAS ONSHORE LP	Slot	SLOT#03 HUNT 21-5 (660'FNL & 632'FEL )
Area	COLORADO	Well	HUNT 21-5
Field	WELD COUNTY (ANADARKO)	Wellbore	HUNT 21-5 PWB
Facility	SEC.05-T3N-R66W		

## WELLPATH DATA (95 stations) † = interpolated/extrapolated station

MD [ft]	Inclination [°]	Azimuth [°]	TVD [ft]	Vert Sect [ft]	North [ft]	East [ft]	DLS [°/100ft]	Comments
0.00†	0.000	250.682	0.00	0.00	0.00	0.00	0.00	
15.00	0.000	250.682	15.00	0.00	0.00	0.00	0.00	Tie On
115.00†	0.000	250.682	115.00	0.00	0.00	0.00	0.00	
215.00†	0.000	250.682	215.00	0.00	0.00	0.00	0.00	
315.00†	0.000	250.682	315.00	0.00	0.00	0.00	0.00	
415.00†	0.000	250.682	415.00	0.00	0.00	0.00	0.00	
515.00†	0.000	250.682	515.00	0.00	0.00	0.00	0.00	
615.00†	0.000	250.682	615.00	0.00	0.00	0.00	0.00	
715.00†	0.000	250.682	715.00	0.00	0.00	0.00	0.00	
800.00	0.000	250.682	800.00	0.00	0.00	0.00	0.00	End of Tangent
815.00†	0.300	250.682	815.00	0.04	-0.01	-0.04	2.00	
915.00†	2.300	250.682	914.97	2.31	-0.76	-2.18	2.00	
1015.00†	4.300	250.682	1014.80	8.06	-2.67	-7.61	2.00	
1115.00†	6.300	250.682	1114.37	17.30	-5.72	-16.33	2.00	
1215.00†	8.300	250.682	1213.55	30.01	-9.93	-28.32	2.00	
1315.00†	10.300	250.682	1312.23	46.17	-15.27	-43.57	2.00	
1415.00†	12.300	250.682	1410.29	65.76	-21.75	-62.06	2.00	
1515.00†	14.300	250.682	1507.60	88.76	-29.36	-83.77	2.00	
1615.00†	16.300	250.682	1604.05	115.15	-38.09	-108.67	2.00	
1715.00†	18.300	250.682	1699.52	144.89	-47.93	-136.73	2.00	
1815.00†	20.300	250.682	1793.90	177.94	-58.86	-167.92	2.00	
1915.00†	22.300	250.682	1887.06	214.26	-70.88	-202.19	2.00	
2015.00†	24.300	250.682	1978.90	253.81	-83.96	-239.52	2.00	
2115.00†	26.300	250.682	2069.31	296.54	-98.10	-279.85	2.00	
2175.00	27.500	250.682	2122.81	323.69	-107.08	-305.47	2.00	Build (S)
2215.00†	27.500	250.682	2158.29	342.16	-113.19	-322.90	0.00	
2315.00†	27.500	250.682	2246.99	388.33	-128.47	-366.47	0.00	
2415.00†	27.500	250.682	2335.69	434.51	-143.74	-410.05	0.00	
2515.00†	27.500	250.682	2424.40	480.68	-159.02	-453.62	0.00	
2615.00†	27.500	250.682	2513.10	526.86	-174.29	-497.20	0.00	
2715.00†	27.500	250.682	2601.80	573.03	-189.57	-540.77	0.00	
2815.00†	27.500	250.682	2690.50	619.21	-204.84	-584.35	0.00	
2915.00†	27.500	250.682	2779.20	665.38	-220.12	-627.92	0.00	
3015.00†	27.500	250.682	2867.90	711.56	-235.39	-671.50	0.00	
3115.00†	27.500	250.682	2956.60	757.73	-250.67	-715.07	0.00	
3215.00†	27.500	250.682	3045.30	803.91	-265.94	-758.65	0.00	
3315.00†	27.500	250.682	3134.00	850.08	-281.22	-802.22	0.00	
3415.00†	27.500	250.682	3222.71	896.26	-296.49	-845.80	0.00	
3515.00†	27.500	250.682	3311.41	942.43	-311.77	-889.37	0.00	
3615.00†	27.500	250.682	3400.11	988.61	-327.05	-932.95	0.00	
3715.00†	27.500	250.682	3488.81	1034.78	-342.32	-976.52	0.00	
3815.00†	27.500	250.682	3577.51	1080.96	-357.60	-1020.10	0.00	
3915.00†	27.500	250.682	3666.21	1127.13	-372.87	-1063.67	0.00	
4015.00†	27.500	250.682	3754.91	1173.31	-388.15	-1107.25	0.00	
4065.83†	27.500	250.682	3800.00	1196.78	-395.91	-1129.40	0.00	PARKMAN TOP



# Planned Wellpath Report

HUNT 21-5 (REV-A.0) PWP

Page 3 of 5



INTEQ

## REFERENCE WELLPATH IDENTIFICATION

Operator	KERR MCGEE OIL & GAS ONSHORE LP	Slot	SLOT#03 HUNT 21-5 (660'FNL & 632'FEL )
Area	COLORADO	Well	HUNT 21-5
Field	WELD COUNTY (ANADARKO)	Wellbore	HUNT 21-5 PWB
Facility	SEC.05-T3N-R66W		

## WELLPATH DATA (95 stations) † = interpolated/extrapolated station

MD [ft]	Inclination [°]	Azimuth [°]	TVD [ft]	Vert Sect [ft]	North [ft]	East [ft]	DLS [°/100ft]	Comments
4115.00†	27.500	250.682	3843.61	1219.48	-403.42	-1150.82	0.00	
4215.00†	27.500	250.682	3932.31	1265.66	-418.70	-1194.40	0.00	
4315.00†	27.500	250.682	4021.02	1311.83	-433.97	-1237.97	0.00	
4415.00†	27.500	250.682	4109.72	1358.01	-449.25	-1281.55	0.00	
4515.00†	27.500	250.682	4198.42	1404.18	-464.52	-1325.12	0.00	
4528.06†	27.500	250.682	4210.00	1410.21	-466.52	-1330.81	0.00	SUSSEX TOP
4615.00†	27.500	250.682	4287.12	1450.36	-479.80	-1368.70	0.00	
4715.00†	27.500	250.682	4375.82	1496.53	-495.07	-1412.27	0.00	
4815.00†	27.500	250.682	4464.52	1542.71	-510.35	-1455.85	0.00	
4915.00†	27.500	250.682	4553.22	1588.88	-525.62	-1499.42	0.00	
5015.00†	27.500	250.682	4641.92	1635.06	-540.90	-1543.00	0.00	
5115.00†	27.500	250.682	4730.62	1681.23	-556.17	-1586.57	0.00	
5154.18	27.500	250.682	4765.38	1699.32	-562.16	-1603.64	0.00	End of Tangent (S)
5215.00†	26.284	250.682	4819.62	1726.83	-571.26	-1629.60	2.00	
5315.00†	24.284	250.682	4910.04	1769.54	-585.39	-1669.91	2.00	
5415.00†	22.284	250.682	5001.89	1809.07	-598.46	-1707.21	2.00	
5515.00†	20.284	250.682	5095.06	1845.36	-610.47	-1741.46	2.00	
5615.00†	18.284	250.682	5189.45	1878.38	-621.40	-1772.62	2.00	
5715.00†	16.284	250.682	5284.93	1908.09	-631.22	-1800.66	2.00	
5815.00†	14.284	250.682	5381.38	1934.45	-639.94	-1825.53	2.00	
5915.00†	12.284	250.682	5478.70	1957.43	-647.54	-1847.22	2.00	
6015.00†	10.284	250.682	5576.77	1976.99	-654.02	-1865.68	2.00	
6115.00†	8.284	250.682	5675.45	1993.12	-659.35	-1880.90	2.00	
6215.00†	6.284	250.682	5774.64	2005.80	-663.55	-1892.87	2.00	
6315.00†	4.284	250.682	5874.21	2015.01	-666.59	-1901.56	2.00	
6415.00†	2.284	250.682	5974.04	2020.74	-668.49	-1906.96	2.00	
6515.00†	0.284	250.682	6074.01	2022.98	-669.23	-1909.08	2.00	
6529.18	0.000	250.682	6088.19 <sup>†</sup>	2023.01	-669.24	-1909.11	2.00	Drop (S)
6615.00†	0.000	250.682	6174.01	2023.01	-669.24	-1909.11	0.00	
6715.00†	0.000	250.682	6274.01	2023.01	-669.24	-1909.11	0.00	
6815.00†	0.000	250.682	6374.01	2023.01	-669.24	-1909.11	0.00	
6915.00†	0.000	250.682	6474.01	2023.01	-669.24	-1909.11	0.00	
7015.00†	0.000	250.682	6574.01	2023.01	-669.24	-1909.11	0.00	
7115.00†	0.000	250.682	6674.01	2023.01	-669.24	-1909.11	0.00	
7215.00†	0.000	250.682	6774.01	2023.01	-669.24	-1909.11	0.00	
7315.00†	0.000	250.682	6874.01	2023.01	-669.24	-1909.11	0.00	
7415.00†	0.000	250.682	6974.01	2023.01	-669.24	-1909.11	0.00	
7440.99†	0.000	250.682	7000.00	2023.01	-669.24	-1909.11	0.00	NIO A TOP
7515.00†	0.000	250.682	7074.01	2023.01	-669.24	-1909.11	0.00	
7615.00†	0.000	250.682	7174.01	2023.01	-669.24	-1909.11	0.00	
7715.00†	0.000	250.682	7274.01	2023.01	-669.24	-1909.11	0.00	
7729.99†	0.000	250.682	7289.00	2023.01	-669.24	-1909.11	0.00	CODELL TOP
7815.00†	0.000	250.682	7374.01	2023.01	-669.24	-1909.11	0.00	
7915.00†	0.000	250.682	7474.01	2023.01	-669.24	-1909.11	0.00	
8015.00†	0.000	250.682	7574.01	2023.01	-669.24	-1909.11	0.00	



# Planned Wellpath Report

HUNT 21-5 (REV-A.0) PWP

Page 4 of 5



INTEQ

## REFERENCE WELLPATH IDENTIFICATION

Operator	KERR MCGEE OIL & GAS ONSHORE LP	Slot	SLOT#03 HUNT 21-5 (660'FNL & 632'FEL )
Area	COLORADO	Well	HUNT 21-5
Field	WELD COUNTY (ANADARKO)	Wellbore	HUNT 21-5 PWB
Facility	SEC.05-T3N-R66W		

## WELLPATH DATA (95 stations) † = interpolated/extrapolated station

MD [ft]	Inclination [°]	Azimuth [°]	TVD [ft]	Vert Sect [ft]	North [ft]	East [ft]	DLS [°/100ft]	Comments
8115.00†	0.000	250.682	7674.01	2023.01	-669.24	-1909.11	0.00	
8164.99†	0.000	250.682	7724.00	2023.01	-669.24	-1909.11	0.00	JSAND TOP
8215.00†	0.000	250.682	7774.01	2023.01	-669.24	-1909.11	0.00	
8315.00†	0.000	250.682	7874.01	2023.01	-669.24	-1909.11	0.00	
8315.99	0.000	250.682	7875.00	2023.01	-669.24	-1909.11	0.00	End of Tangent

## HOLE & CASING SECTIONS Ref Wellbore: HUNT 21-5 PWB Ref Wellpath: HUNT 21-5 (REV-A.0) PWP

String/Diameter	Start MD [ft]	End MD [ft]	Interval [ft]	Start TVD [ft]	End TVD [ft]	Start N/S [ft]	Start E/W [ft]	End N/S [ft]	End E/W [ft]
12.25in Open Hole	15.00	600.00	585.00	15.00	600.00	0.00	0.00	0.00	0.00
8.625in Casing Surface	15.00	600.00	585.00	15.00	600.00	0.00	0.00	0.00	0.00
7.875in Open Hole	600.00	8315.99	7715.99	600.00	7875.00	0.00	0.00	-669.24	-1909.11

## TARGETS

Name	MD [ft]	TVD [ft]	North [ft]	East [ft]	Grid East [srv ft]	Grid North [srv ft]	Latitude	Longitude	Shape
HUNT 21-5 BHL ON PLAT (1320'FNL & 2540'FEL)		6000.00	-670.24	-1909.11	3195092.25	1337323.08	40°15'26.064"N	104°48'03.528"W	point
1) HUNT 21-5 GEO TARGET 50' RADIUS (1321'FNL & 2540'FEL)		6000.00	-669.24	-1909.11	3195092.24	1337324.09	40°15'26.074"N	104°48'03.528"W	circle
HUNT 21-5 HARDLINE 50'N OF GEO TARGET		6000.00	-619.24	-1909.11	3195091.84	1337374.08	40°15'26.568"N	104°48'03.528"W	point

## SURVEY PROGRAM Ref Wellbore: HUNT 21-5 PWB Ref Wellpath: HUNT 21-5 (REV-A.0) PWP

Start MD [ft]	End MD [ft]	Positional Uncertainty Model	Log Name/Comment	Wellbore
15.00	8315.99	MTC (Collar, post-2000) (Standard)		HUNT 21-5 PWB



# Planned Wellpath Report

HUNT 21-5 (REV-A.0) PWP

Page 5 of 5



INTEQ

## REFERENCE WELLPATH IDENTIFICATION

Operator	KERR MCGEE OIL & GAS ONSHORE LP	Slot	SLOT#03 HUNT 21-5 (660'FNL & 632'FEL )
Area	COLORADO	Well	HUNT 21-5
Field	WELD COUNTY (ANADARKO)	Wellbore	HUNT 21-5 PWB
Facility	SEC.05-T3N-R66W		

## WELLPATH COMMENTS

MD [ft]	Inclination [°]	Azimuth [°]	TVD [ft]	Comment
4065.83	27.500	250.682	3800.00	PARKMAN TOP
4528.06	27.500	250.682	4210.00	SUSSEX TOP
7440.99	0.000	250.682	7000.00	NIO A TOP
7729.99	0.000	250.682	7289.00	CODELL TOP
8164.99	0.000	250.682	7724.00	JSAND TOP