

Stell Surveying Services, LLC

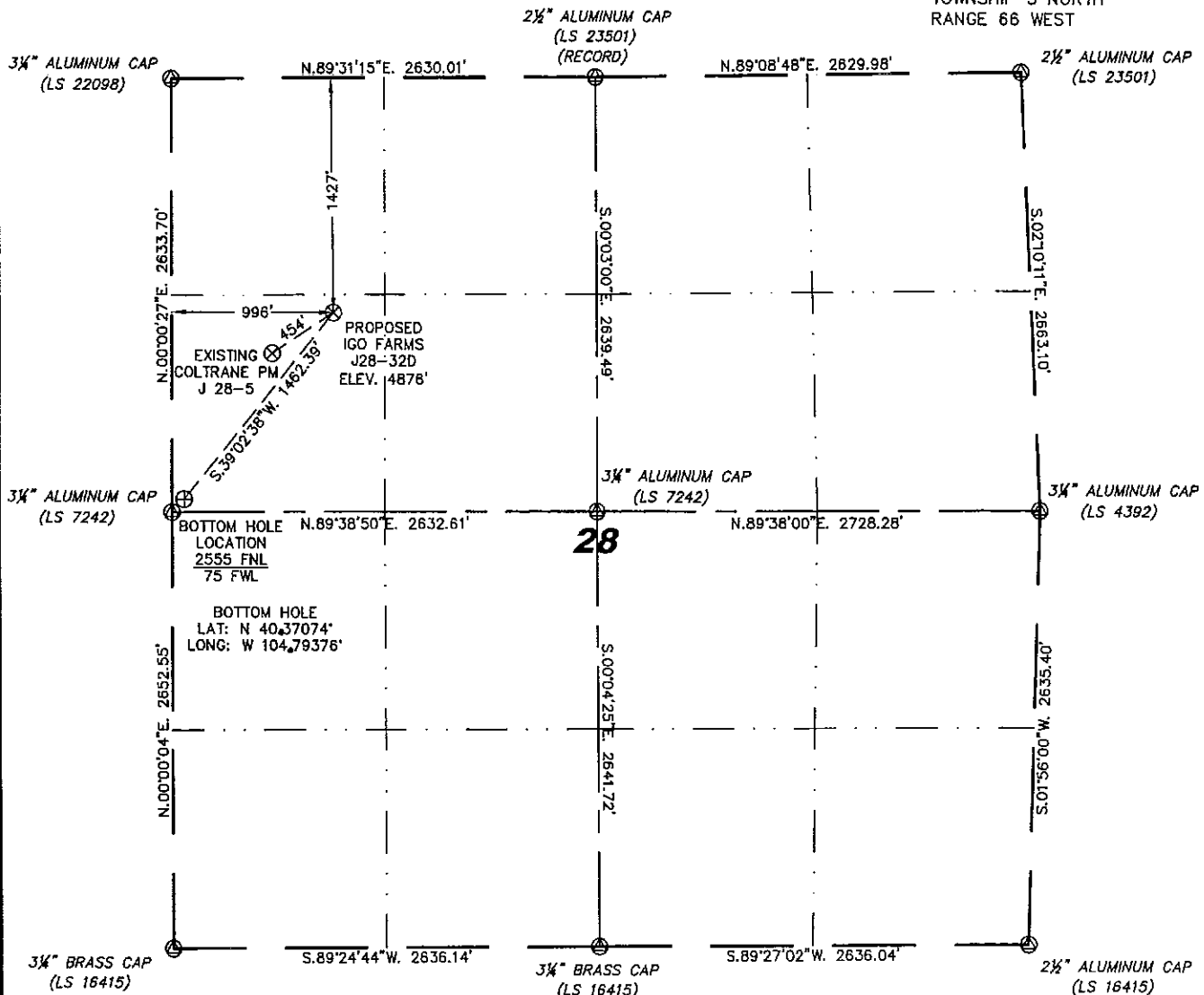
1102 West 19th Street P.O. BOX 2073

Cheyenne, Wyoming 82009

WELL LOCATION CERTIFICATE

THIS MAP DOES NOT REPRESENT A BOUNDARY SURVEY

SECTION 28
TOWNSHIP 5 NORTH
RANGE 66 WEST



IN ACCORDANCE WITH A REQUEST FROM JACK FINCHAM - NOBLE ENERGY INC., STELL SURVEYING SERVICES, LLC HAS DETERMINED THE LOCATION OF THE IGO FARMS J28-32D WELL TO BE 1427' FNL, 996' FNL, AS MEASURED AT NINETY (90) DEGREES FROM THE SECTION LINES, SECTION 28, TOWNSHIP 5 NORTH, RANGE 66 WEST, 6TH PRINCIPLE MERIDIAN, WELD COUNTY, COLORADO.

I HEREBY CERTIFY THAT THIS WELL LOCATION CERTIFICATE WAS PREPARED BY ME, OR UNDER MY DIRECT SUPERVISION, THAT THE FIELD WORK WAS COMPLETED ON 02/11/2009, FOR AND ON BEHALF OF NOBLE ENERGY INC. THAT IT IS NOT A LAND SURVEY PLAT OR AN IMPROVEMENT SURVEY PLAT, AND THAT IT IS NOT TO BE RELIED UPON FOR ESTABLISHMENT OF FENCE, BUILDING, OR OTHER FUTURE IMPROVEMENT LINES.

NOTES:

- 1) BASIS OF BEARINGS FOR THIS MAP ARE BASED UPON GPS OBSERVATIONS MADE ON 07/03/2007 BETWEEN MONUMENTS LOCATED AT THE SOUTHEAST SECTION CORNER AND THE NORTHEAST SECTION CORNER OF SAID SECTION AND WITH ALL BEARINGS SHOWN HEREON RELATIVE THERETO.
- 2) ELEVATIONS ARE BASED UPON NGS OPUS SOLUTION NAVD 88 DATUM.
- 3) THE NEAREST EXISTING WELL IS: COLTRANE PM J 28-5, 454' SOUTHWEST.
- 4) SEE VISIBLE IMPROVEMENTS EXHIBIT FOR ALL IMPROVEMENTS WITHIN 400'.
- 5) THE LOCATION FALLS IN IRRIGATED CROP LAND.

LATITUDE & LONGITUDE (NAD 83 SURFACE HOLE):
LATITUDE: N 40.37384°
LONGITUDE: W 104.79042°
PDOP: 2.3
QUARTER-QUARTER: SW/4NW/4
NEAREST PROPERTY LINE: 101' TO THE SOUTH

LEGEND

- ⊙ FOUND SURVEY MONUMENT PER MONUMENT RECORD - EXCEPTIONS NOTED.
- (C) CALCULATED DIMENSION

NOTICE: According to Colorado law you MUST commence any legal action based upon any defect in this W.L.C. within three years after you first discover such defect. In no event may any action based upon any defect in this W.L.C. be commenced more than ten years from this sold date of the certification shown hereon.

David C. Holmes
Professional Land Surveyor Registration No. 32828
State of Colorado
JOB #: Q7086

Completed 05/07/2009

