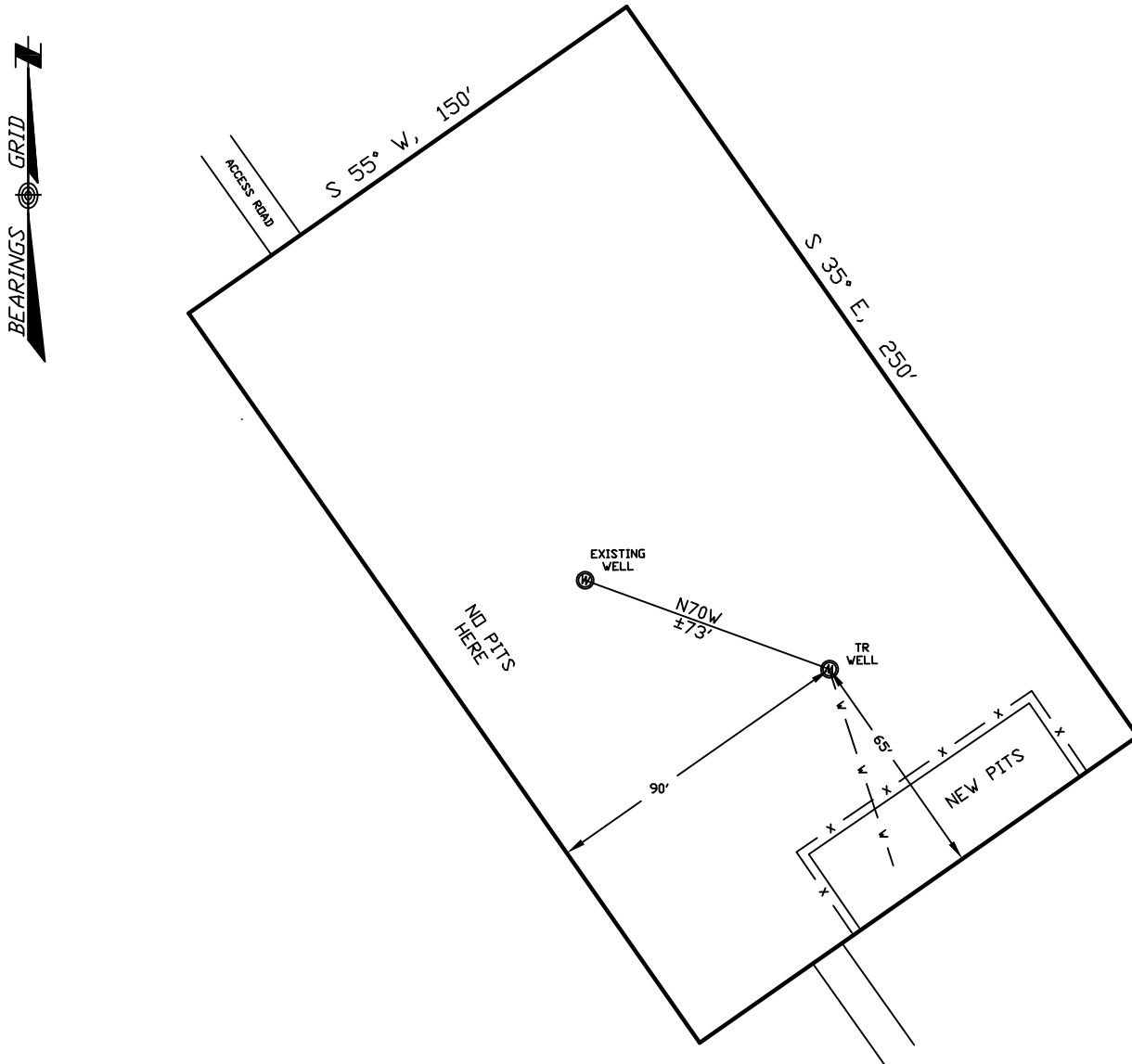


# WELLSITE/PRODUCTION EQUIPMENT LAYOUT

OPERATOR: Pioneer Natural Resources

WELL NAME: Guajardo 24-18 TR

SESW of SECTION 18 TOWNSHIP 32 S, RANGE 65 W OF THE 6TH P.M., IN LAS ANIMAS COUNTY



## NOTE:

MUD AND BLOW PITS WILL BE CONVERTED TO UNLINED EVAPORATION PITS FOR PRODUCTION.

WELLHEADS ARE TYPICALLY PCP DRIVE HEADS

## GRAPHIC SCALE



( IN FEET )

1 inch = 50 ft.

## LEGEND:

- ⊙ = WELLHEAD
- ⊙ = EXISTING WELLPAD
- x = FENCE (4 STRAND)
- GAS — = 4" GAS GATHERING LINE
- W — = 2" WATER LINE
- M.R. = COMBO METER RUN AND WATER/GAS SEPERATOR
- G.D.S. = GAS DRIVE SYSTEM

August 14, 2009

Date Platted

SHIELDS SURVEY L<sup>td</sup>. C<sup>o</sup>.  
Raton, New Mexico 87740  
(575)445-1232