

Steil Surveying Services, LLC

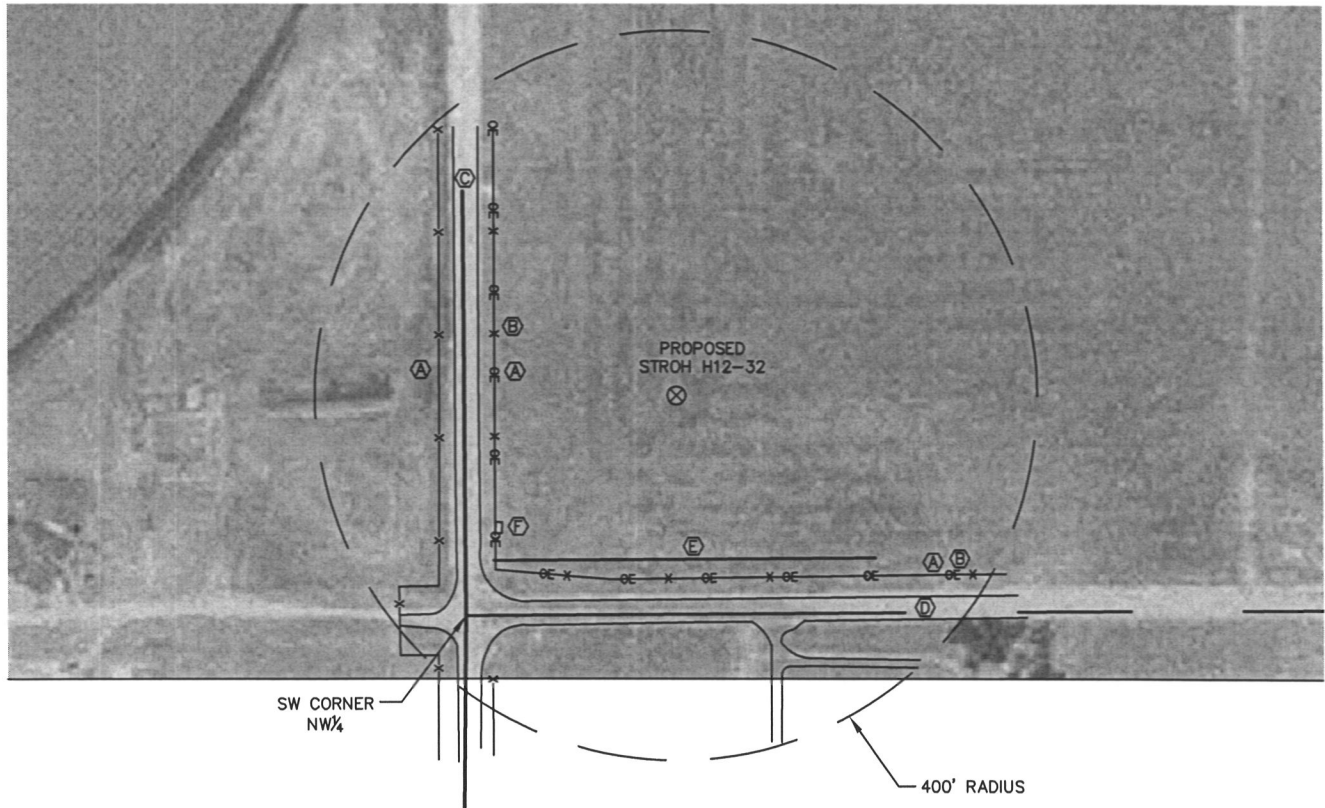
1102 West 19th Street P.O. BOX 2073

Cheyenne, Wyoming 82009

# VISIBLE IMPROVEMENTS

THIS MAP DOES NOT REPRESENT A BOUNDARY SURVEY

SECTION 12  
TOWNSHIP 3 NORTH  
RANGE 65 WEST



## IMPROVEMENTS:

- (A) FENCE LINES - 202' & 263' WEST & 200' SOUTH
- (B) OVERHEAD POWER LINE - 202' WEST & 200' SOUTH
- (C) GRAVEL COUNTY ROAD NO. 47 - 219' WEST
- (D) GRAVEL COUNTY ROAD NO. 34.5 - 223' SOUTH
- (E) BURIED GAS LINE - 179' SOUTH
- (F) GAS VALVE ENCLOSURE - 238' SOUTHWEST

NOTICE: According to Colorado law you MUST commence any legal action based upon any defect in this W.L.C. within three years after you first discover such defect. In no event may any action based upon any defect in this W.L.C. be commenced more than ten years from this said date of the certification shown hereon.

