

WELL LOCATION CERTIFICATE

SECTION 9, TOWNSHIP 6 NORTH, RANGE 65 WEST, 6TH P.M.

NW SEC 9
2.5"AC LS 23501

NE SEC 9
3.25"AC LS 22098

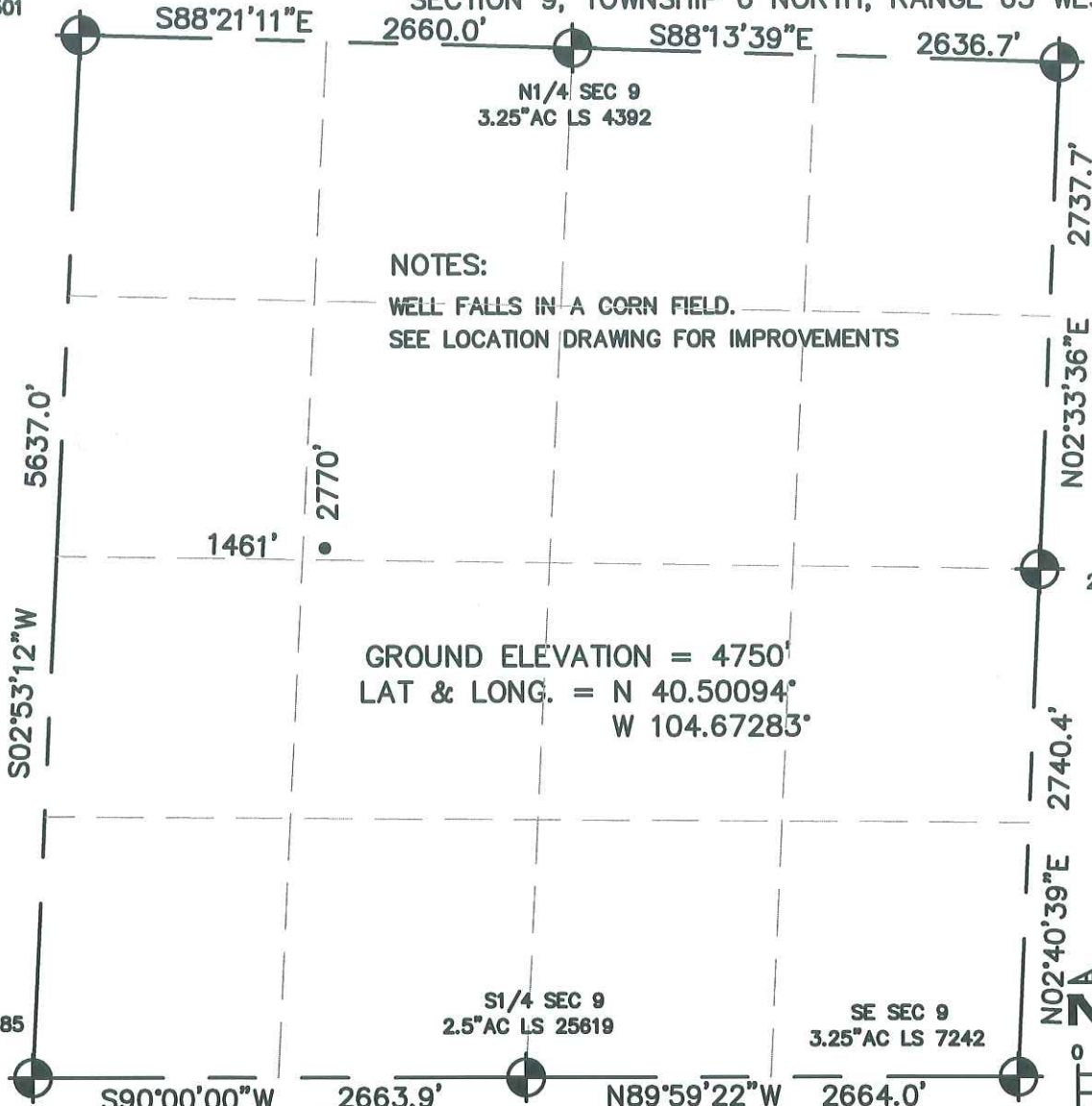
N1/4 SEC 9
3.25"AC LS 4392

E1/4 SEC 9
2.5"AC LS 12374

S1/4 SEC 9
2.5"AC LS 25619

SE SEC 9
3.25"AC LS 7242

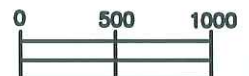
SW SEC 9
2.5"AC LS 20685



NOTES:

WELL FALLS IN A CORN FIELD.
SEE LOCATION DRAWING FOR IMPROVEMENTS

GROUND ELEVATION = 4750'
LAT & LONG. = N 40.50094°
W 104.67283°



SCALE:
1" = 1000'

LEGEND:

- = FOUND MONUMENT
- = PROPOSED WELL
- = IMPROVEMENTS (AS LABELED)

I HEREBY STATE TO PETROLEUM DEVELOPMENT CORP. THAT THIS WELL LOCATION CERTIFICATE FOR THE WELL COZZENS 9K IS LOCATED 2770' FNL & 1461' FWL, SEC. 9, T6N, R65W, 6PM.

ELEVATION SOURCE = USGS 7.5' QUAD.MAP CONTOURS
NGVD 1929 DATUM.

LAT. & LONG. ARE DIFFERENTIALLY CORRECTED (NAD'83)
USING (DGPS) WITH (PDOP) VALUES LESS THAN SIX (6).

SHOWN DISTANCES ARE FIELD MEASURED - EXTERIOR SECTION LINES
ARE DRAWN TO SCALE (BEST APPROX. OR FOUND MONUMENT).

DISTANCES TO WELL SHOWN PERPENDICULAR
TO SECTION LINES.

THOMAS G. CARLSON, PLS 24657
HORSESHOE SURVEYING, LLC

THIS IS NOT A MONUMENTED BOUNDARY SURVEY, IT IS ONLY A
DRAWING INTENDED TO DEPICT THE WELL LOCATION TO SECTION LINES.

PREPARED BY:		HORSESHOE SURVEYING, LLC PO BOX 150458 LAKEWOOD, CO 80215 (720)872-0196		WELL NAME: COZZENS 9K	
DRAWING DATE: 9-29-09		BY: TGC		LOCATION: WELD COUNTY, CO W1/2, SEC. 9, T6N, R65W, 6TH P.M.	
FIELD DATE: 10-01-08		CHKD:		JOB NO.	
				SHEET NO. 1 OF 1	

Thomas G. Carlson
THOMAS G. CARLSON
24657
9-29-09