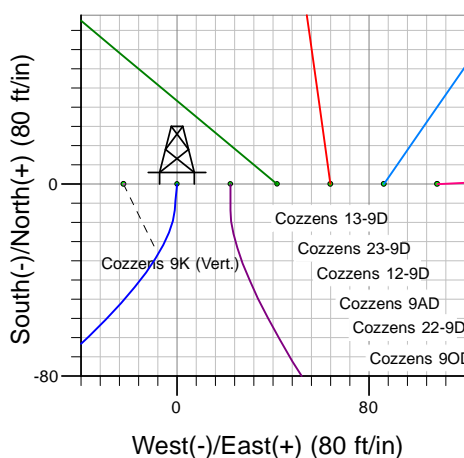
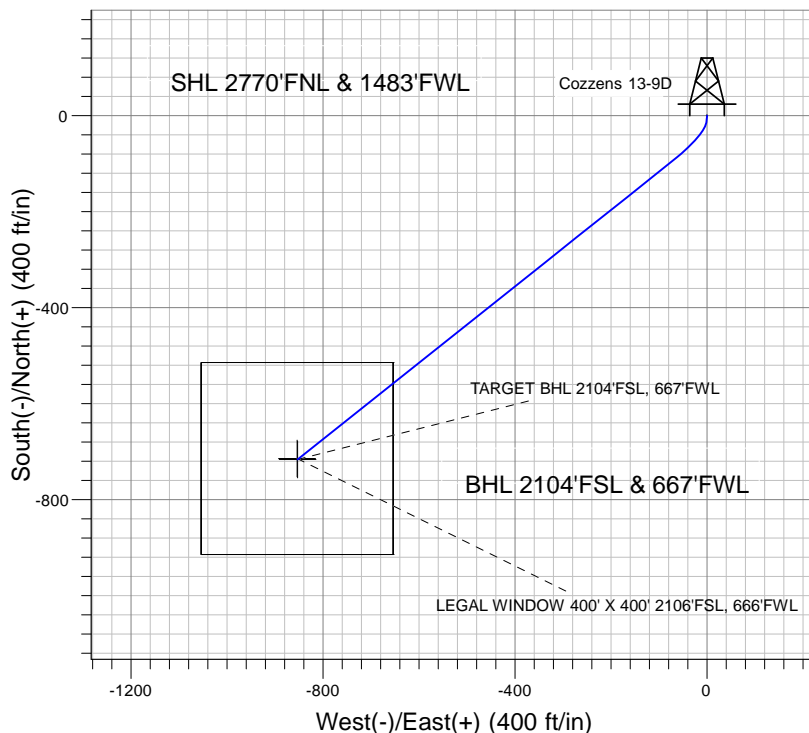
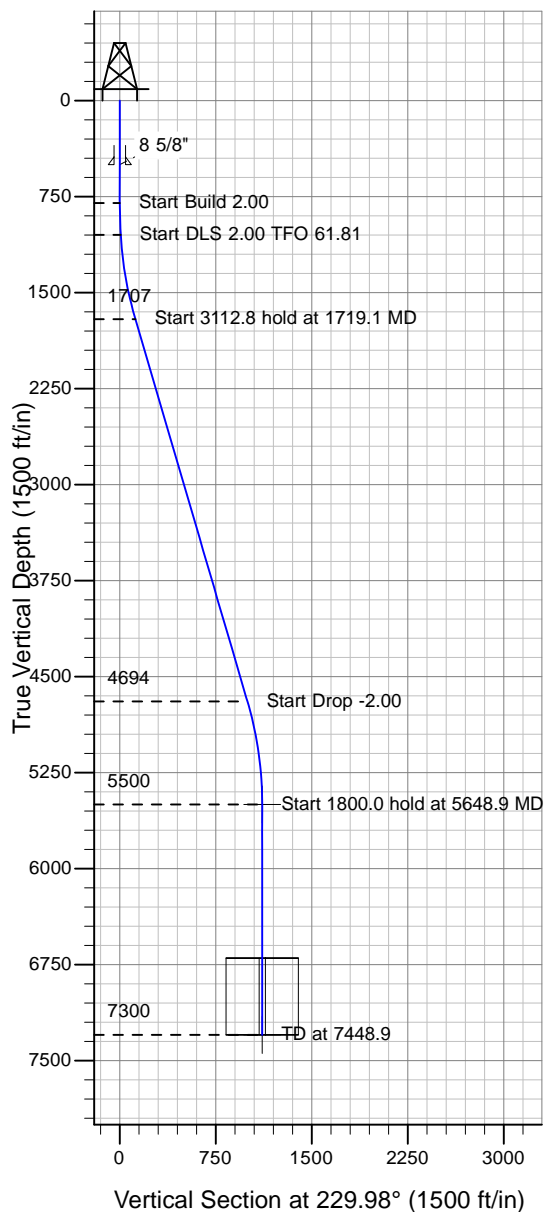


Well Name: Cozzens 13-9D

Surface Location: Cozzens 13-9D Pad Sec.9-TN-R65W
 North American Datum 1983 , US State Plane 1983 , Colorado Northern Zone
 Ground Elevation: 4750.0

+N/-S+E/-W Northing Easting Latitude Longitude Slot
 0.0 0.0 1426406.02 3230051.30 40° 30' 3.384 N 104° 40' 21.900 W
 Original Well Elev WELL @ 4763.0ft (Original Well Elev)

PETROLEUM DEVELOPMENT CORP Weld County CO



Cozzens 13-9D Pad Sec.9-TN-R65W
 Cozzens 13-9D
 Plan #2 (10-5-09)
 14:46, October 06 2009



Azimuths to True North
 Magnetic North: 9.01°
 Magnetic Field
 Strength: 53391.8snT
 Dip Angle: 67.21°
 Date: 10/6/2009
 Model: IGRF200510

WELLBORE TARGET DETAILS (LAT/LONG)

Name	TVD	+N/-S	+E/-W	Latitude	Longitude	Shape
TARGET BHL 2104'FSL, 667'FWL	5500.0	-716.4	-853.1	40° 29' 56.305 N	104° 40' 32.943 W	Point
LEGAL WINDOW 400' X 400' 2106'FSL, 666'FWL	7300.0	-714.4	-854.1	40° 29' 56.324 N	104° 40' 32.956 W	Rectangle (Sides: L400.0 W400.0)

SECTION DETAILS

Sec	MD	Inc	Azi	TVD	+N/-S	+E/-W	DLeg	TFace	VSec	Target
1	0.0	0.00	0.00	0.0	0.0	0.0	0.00	0.00	0.0	
2	800.0	0.00	0.00	800.0	0.0	0.0	0.00	0.00	0.0	
3	1050.0	5.00	185.00	1049.7	-10.9	-1.0	2.00	185.00	7.7	
4	1719.1	16.34	231.48	1707.0	-98.9	-77.5	2.00	61.81	123.0	
5	4831.9	16.34	231.48	4694.1	-644.3	-762.6	0.00	0.00	998.3	
6	5648.9	0.00	0.00	5500.0	-716.4	-853.1	2.00	180.00	1114.0	TARGET BHL 2104'FSL, 667'FWL
7	7448.9	0.00	0.00	7300.0	-716.4	-853.1	0.00	0.00	1114.0	