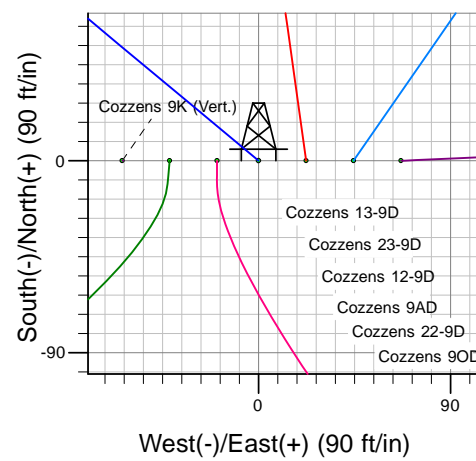
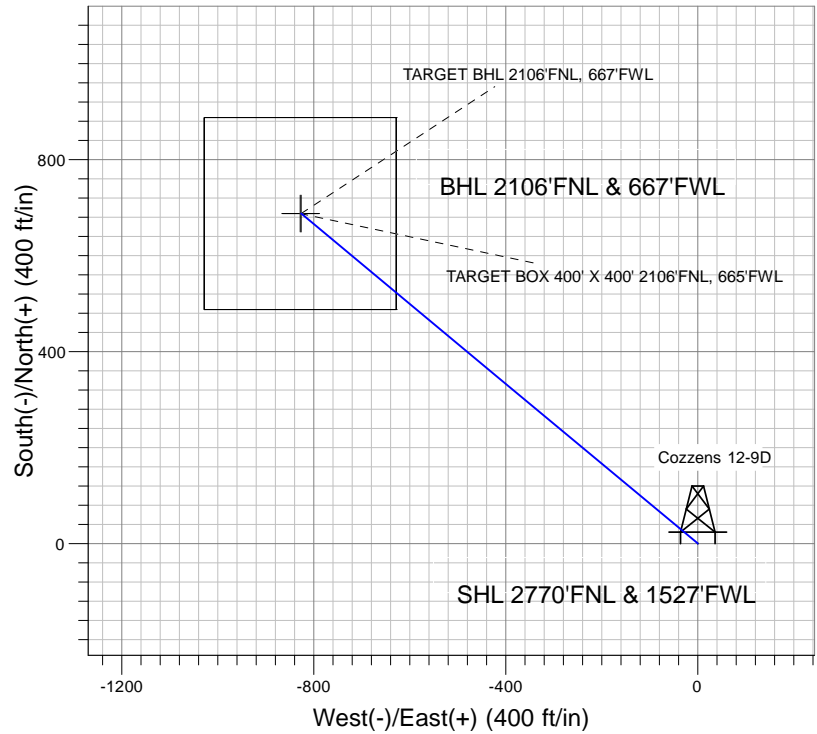
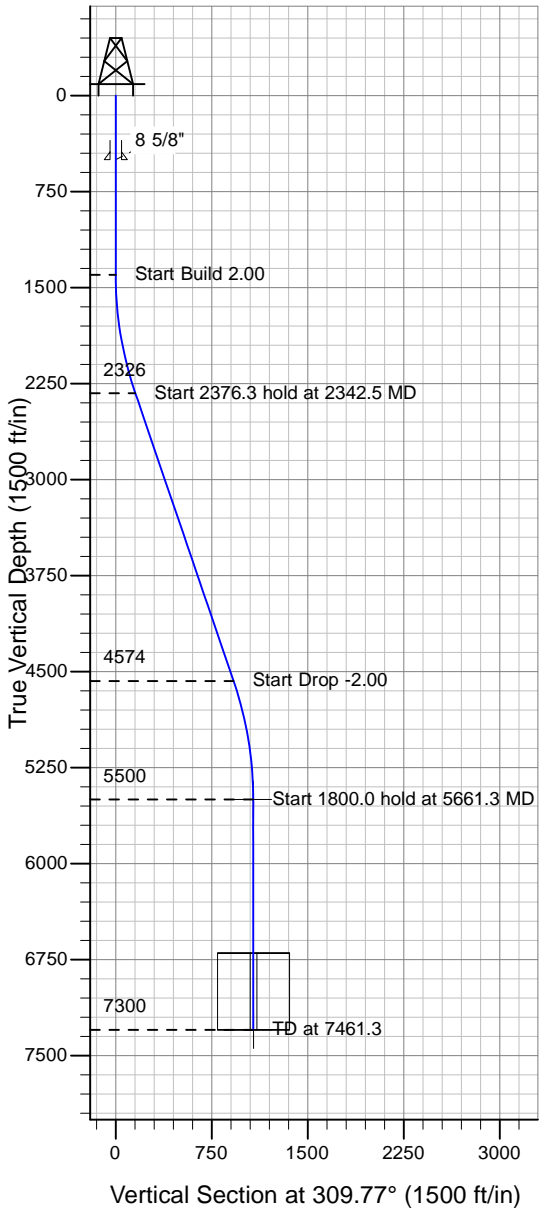


Well Name: Cozzens 12-9D

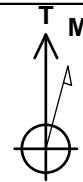
Surface Location: Cozzens 13-9D Pad Sec.9-TN-R65W
 North American Datum 1983 , US State Plane 1983 , Colorado Northern Zone
 Ground Elevation: 4750.0

+N/-S+E/-W Northing Easting Latitude Longitude Slot
 0.0 0.01426406.41 3230093.02 40° 30' 3.384 N 104° 40' 21.360 W
 Original Well Elev WELL @ 4763.0ft (Original Well Elev)

PETROLEUM DEVELOPMENT CORP Weld County CO



Cozzens 13-9D Pad Sec.9-TN-R65W
 Cozzens 12-9D
 Plan #2 (10-5-09)
 15:37, October 06 2009



Azimuths to True North
 Magnetic North: 9.01°

Magnetic Field
 Strength: 53392.1snT
 Dip Angle: 67.21°
 Date: 10/5/2009
 Model: IGRF200510

WELLBORE TARGET DETAILS (LAT/LONG)

Name	TVD	+N/-S	+E/-W	Latitude	Longitude	Shape Point
TARGET BHL 2106'FNL, 667'FWL	5500.0	687.6	-826.3	40° 30' 10.179 N	104° 40' 32.057 W	Rectangle (Sides: L400.0 W400.0)
TARGET BOX 400' X 400' 2106'FNL, 665'FWL	7300.0	687.6	-828.3	40° 30' 10.178 N	104° 40' 32.082 W	

SECTION DETAILS

Sec	MD	Inc	Azi	TVD	+N/-S	+E/-W	DLeg	TFace	VSec	Target
1	0.0	0.00	0.00	0.0	0.0	0.0	0.00	0.00	0.0	
2	1400.0	0.00	0.00	1400.0	0.0	0.0	0.00	0.00	0.0	
3	2342.5	18.85	309.77	2325.5	98.3	-118.1	2.00	309.77	153.6	
4	4718.8	18.85	309.77	4574.5	589.4	-708.2	0.00	0.00	921.4	
5	5661.3	0.00	0.00	5500.0	687.6	-826.3	2.00	180.00	1075.0	TARGET BHL 2106'FNL, 667'FWL
6	7461.3	0.00	0.00	7300.0	687.6	-826.3	0.00	0.00	1075.0	