

WELL LOCATION CERTIFICATE

SECTION 9, TOWNSHIP 6 NORTH, RANGE 65 WEST, 6TH P.M.

NW SEC 9
2.5"AC LS 23501

NE SEC 9
3.25"AC LS 22098

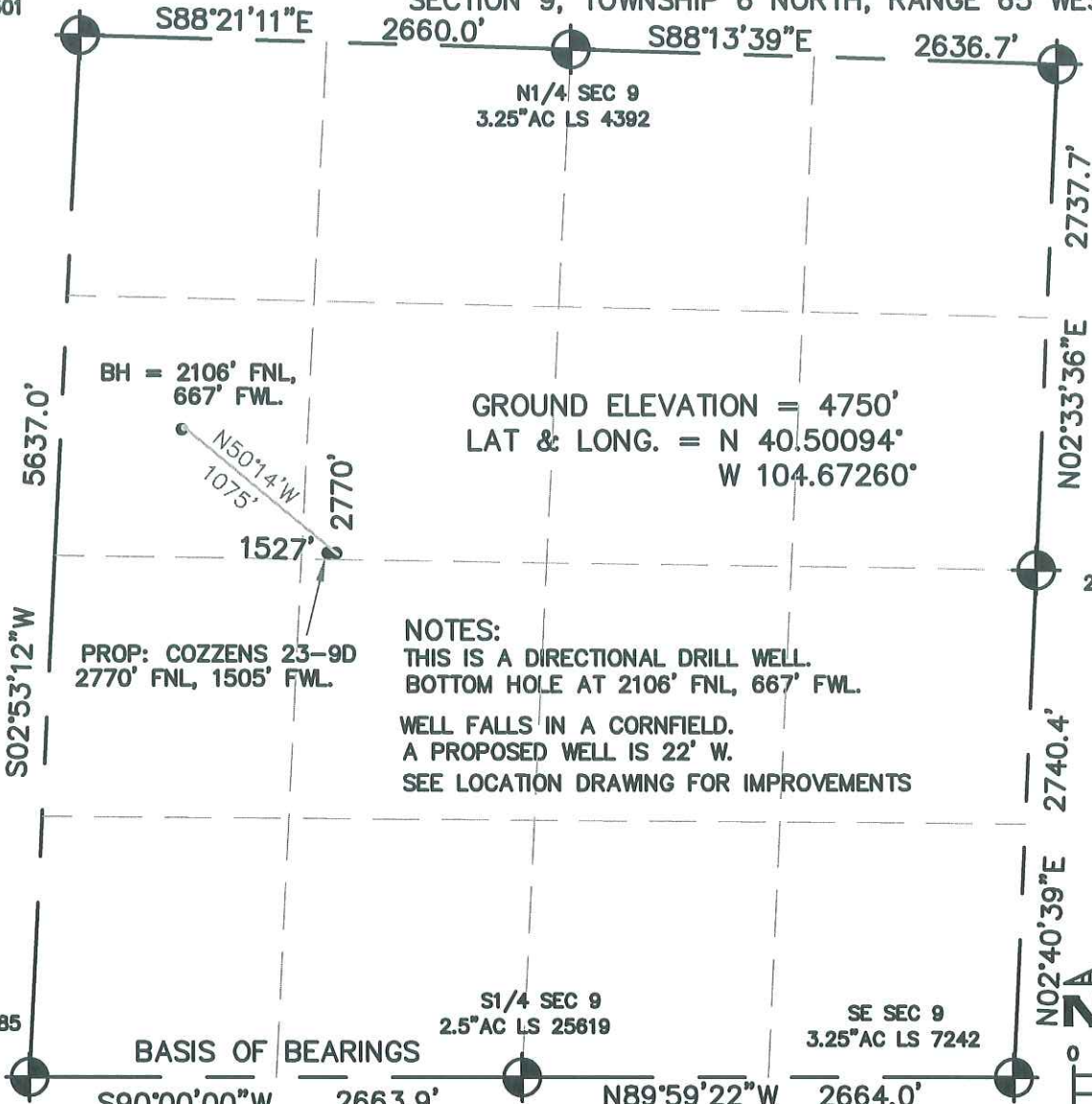
N1/4 SEC 9
3.25"AC LS 4392

E1/4 SEC 9
2.5"AC LS 12374

S1/4 SEC 9
2.5"AC LS 25619

SE SEC 9
3.25"AC LS 7242

SW SEC 9
2.5"AC LS 20685



GROUND ELEVATION = 4750'
LAT & LONG. = N 40.50094°
W 104.67260°

PROP: COZZENS 23-9D
2770' FNL, 1505' FWL.

NOTES:
THIS IS A DIRECTIONAL DRILL WELL.
BOTTOM HOLE AT 2106' FNL, 667' FWL.

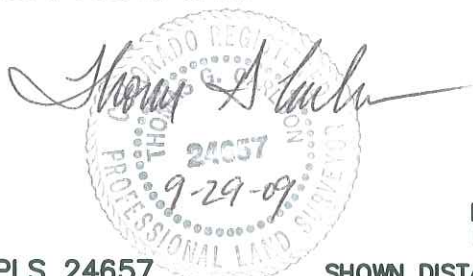
WELL FALLS IN A CORNFIELD.
A PROPOSED WELL IS 22' W.
SEE LOCATION DRAWING FOR IMPROVEMENTS

BASIS OF BEARINGS

I HEREBY STATE TO PETROLEUM DEVELOPMENT CORP. THAT THIS WELL LOCATION CERTIFICATE FOR THE WELL COZZENS 12-9D IS LOCATED 2770' FNL & 1527' FWL, SEC. 9, T6N, R65W, 6PM.

SCALE:
1" = 1000'

- LEGEND:**
- = FOUND MONUMENT
 - = PROPOSED WELL
 - = IMPROVEMENTS (AS LABELED)



ELEVATION SOURCE = USGS 7.5' QUAD.MAP CONTOURS NGVD 1929 DATUM.

LAT. & LONG. ARE DIFFERENTIALLY CORRECTED (NAD'83) USING (DGPS) WITH (PDOP) VALUES LESS THAN SIX (6).

THOMAS G. CARLSON, PLS 24657
HORSESHOE SURVEYING, LLC

SHOWN DISTANCES ARE FIELD MEASURED - EXTERIOR SECTION LINES ARE DRAWN TO SCALE (BEST APPROX. OR FOUND MONUMENT).

THIS IS NOT A MONUMENTED BOUNDARY SURVEY, IT IS ONLY A DRAWING INTENDED TO DEPICT THE WELL LOCATION TO SECTION LINES.

DISTANCES TO WELL SHOWN PERPENDICULAR TO SECTION LINES.

PREPARED BY: HORSESHOE SURVEYING, LLC PO BOX 150458 LAKEWOOD, CO 80215 (720)872-0196		WELL NAME: COZZENS 12-9D	
DRAWING DATE: 9-29-09		LOCATION: WELD COUNTY, CO NW1/4, SEC. 9, T6N, R65W, 6TH P.M.	
FIELD DATE: 9-29-09	BY: TGC	CHKD:	JOB NO. SHEET NO. 1 OF 1