

WELL LOCATION CERTIFICATE

NW SEC 9
2.5"AC LS 23501

SECTION 9, TOWNSHIP 6 NORTH, RANGE 65 WEST, 6TH P.M.

NE SEC 9
3.25"AC LS 22098

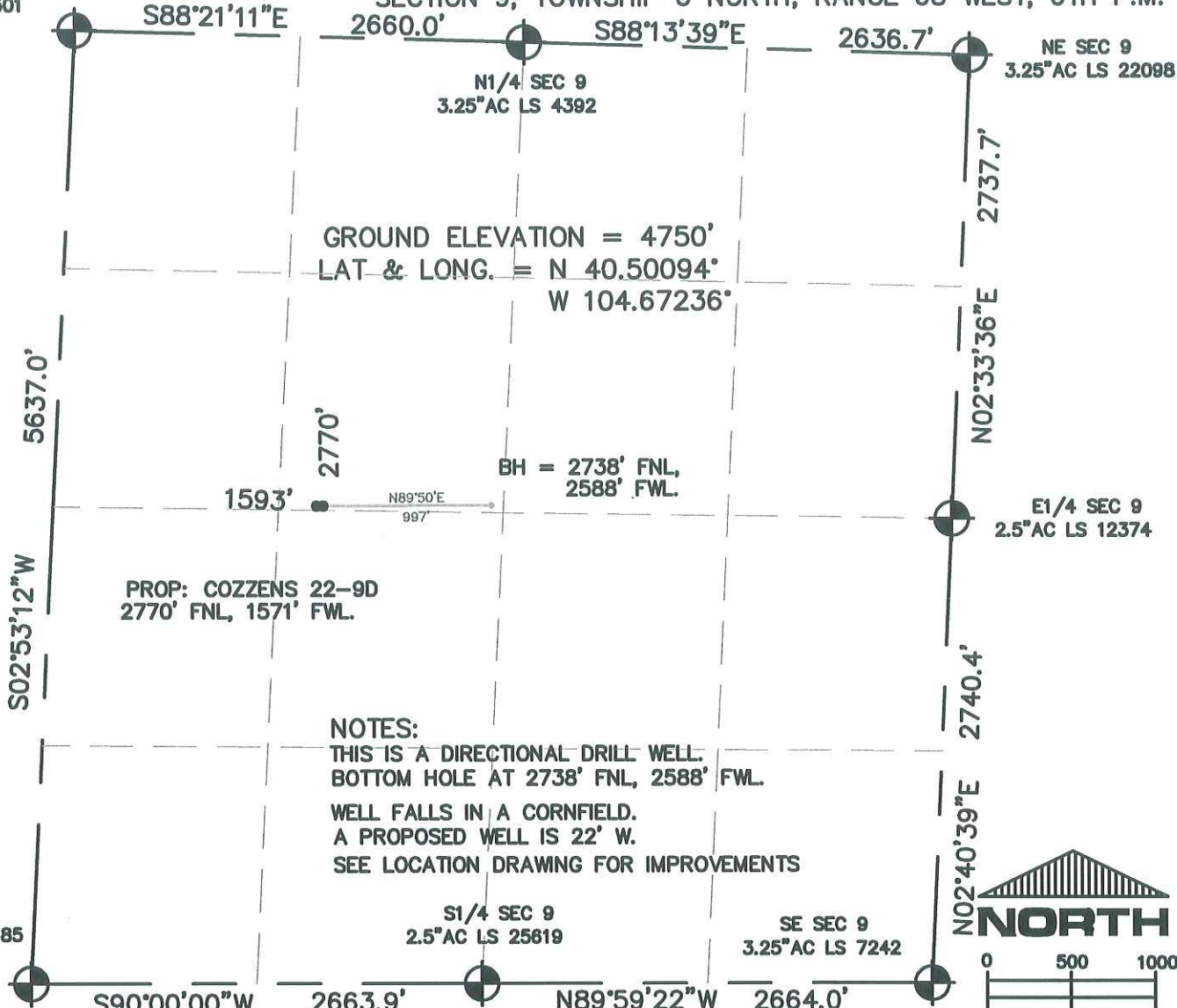
N1/4 SEC 9
3.25"AC LS 4392

E1/4 SEC 9
2.5"AC LS 12374

S1/4 SEC 9
2.5"AC LS 25619

SE SEC 9
3.25"AC LS 7242

SW SEC 9
2.5"AC LS 20685



NOTES:

THIS IS A DIRECTIONAL DRILL WELL.
BOTTOM HOLE AT 2738' FNL, 2588' FWL.

WELL FALLS IN A CORNFIELD.
A PROPOSED WELL IS 22' W.

SEE LOCATION DRAWING FOR IMPROVEMENTS



SCALE:
1" = 1000'

LEGEND:

- = FOUND MONUMENT
- = PROPOSED WELL
- = IMPROVEMENTS (AS LABELED)

ELEVATION SOURCE = USGS 7.5' QUAD.MAP CONTOURS
NGVD 1929 DATUM.

LAT. & LONG. ARE DIFFERENTIALLY CORRECTED (NAD'83)
USING (DGPS) WITH (PDOP) VALUES LESS THAN SIX (6).

THOMAS G. CARLSON, PLS 24657
HORSESHOE SURVEYING, LLC

SHOWN DISTANCES ARE FIELD MEASURED - EXTERIOR SECTION LINES
ARE DRAWN TO SCALE (BEST APPROX. OR FOUND MONUMENT).

THIS IS NOT A MONUMENTED BOUNDARY SURVEY, IT IS ONLY A
DRAWING INTENDED TO DEPICT THE WELL LOCATION TO SECTION LINES.

DISTANCES TO WELL SHOWN PERPENDICULAR
TO SECTION LINES.

PREPARED BY:		HORSESHOE SURVEYING, LLC PO BOX 150458 LAKEWOOD, CO 80215 (720)872-0196		WELL NAME: COZZENS 90D	
DRAWING DATE: 9-29-09				LOCATION: WELD COUNTY, CO NW1/4, SEC. 9, T6N, R65W, 6TH P.M.	
FIELD DATE: 9-29-09	BY: TGC	CHKD:		JOB NO.	SHEET NO. 1 OF 1