

Multi-Well Plan

DALEY LAND SURVEYING, INC.

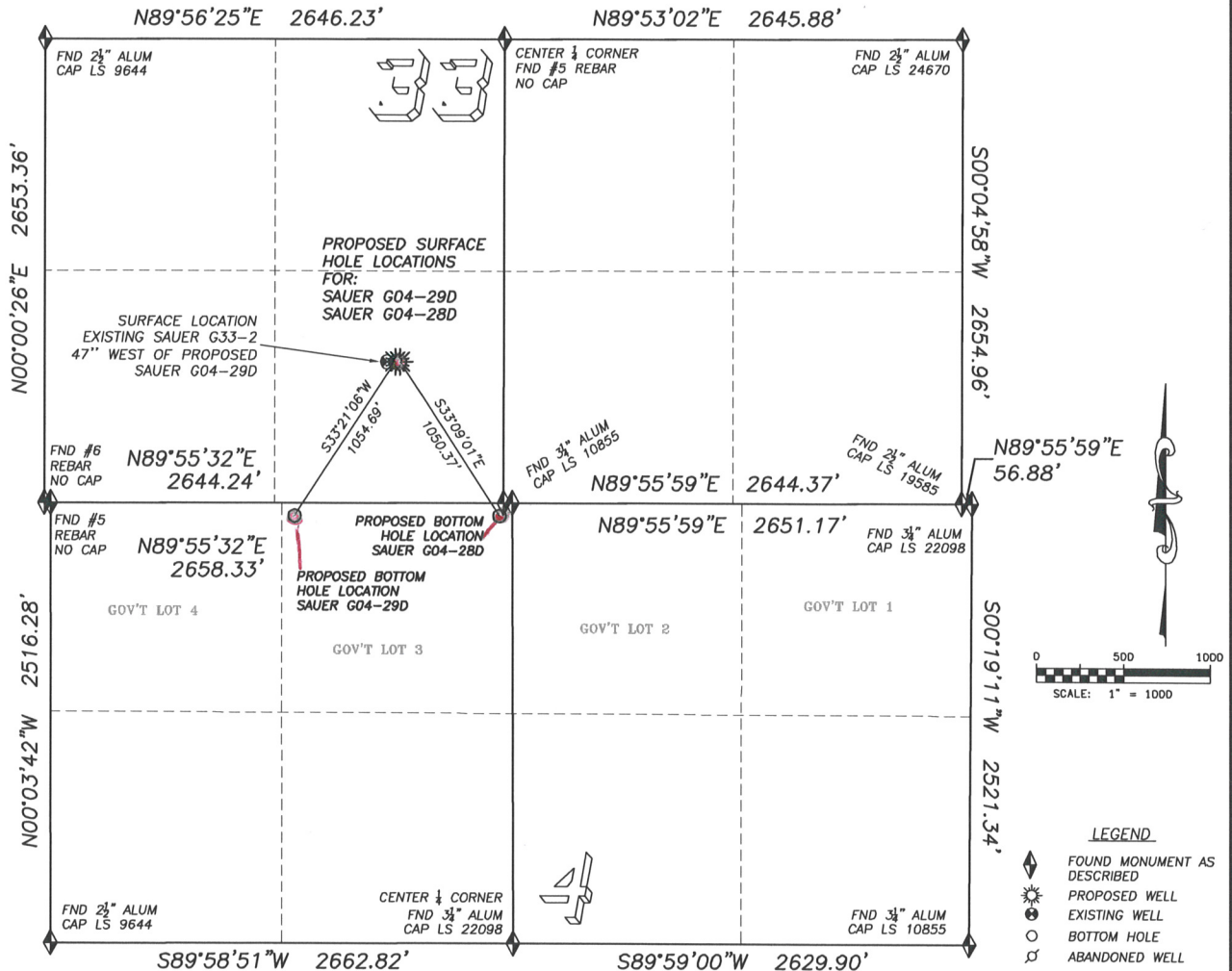
PARKER, CO. 80134

303 953 9841

## DIRECTIONAL LAYOUT

### SAUER G04-28D & SAUER G04-29D

SECTION 33, TOWNSHIP 5 NORTH, RANGE 65 WEST OF THE 6TH PRINCIPLE MERIDIAN



#### NAD 83 LATITUDE AND LONGITUDE

##### SAUER G04-28D SURFACE HOLE:

LATITUDE: N40.35069°  
LONGITUDE: W104.67052°  
ELEVATION: 4662'  
PDOP 1.4  
805' FSL, 2045' FWL

##### BOTTOM HOLE:

LATITUDE: N40.34828°  
LONGITUDE: W104.66846°  
75' FNL, 2583' FWL

##### NEAREST EXISTING WELL:

SAUER 33-2 SURFACE HOLE  
LATITUDE: N40.35069°  
LONGITUDE: W104.67078°  
ELEVATION: 4661'  
72' WEST

#### NAD 83 LATITUDE AND LONGITUDE

##### SAUER G04-29D SURFACE HOLE:

LATITUDE: N40.35069°  
LONGITUDE: W104.67061°  
ELEVATION: 4662'  
PDOP 2.0  
805' FSL, 2020' FWL

##### BOTTOM HOLE:

LATITUDE: N40.34827°  
LONGITUDE: W104.67244°  
75' FNL, 1404' FWL

##### NEAREST EXISTING WELL:

SAUER 33-2 SURFACE HOLE  
LATITUDE: N40.35069°  
LONGITUDE: W104.67078°  
ELEVATION: 4661'  
47' WEST