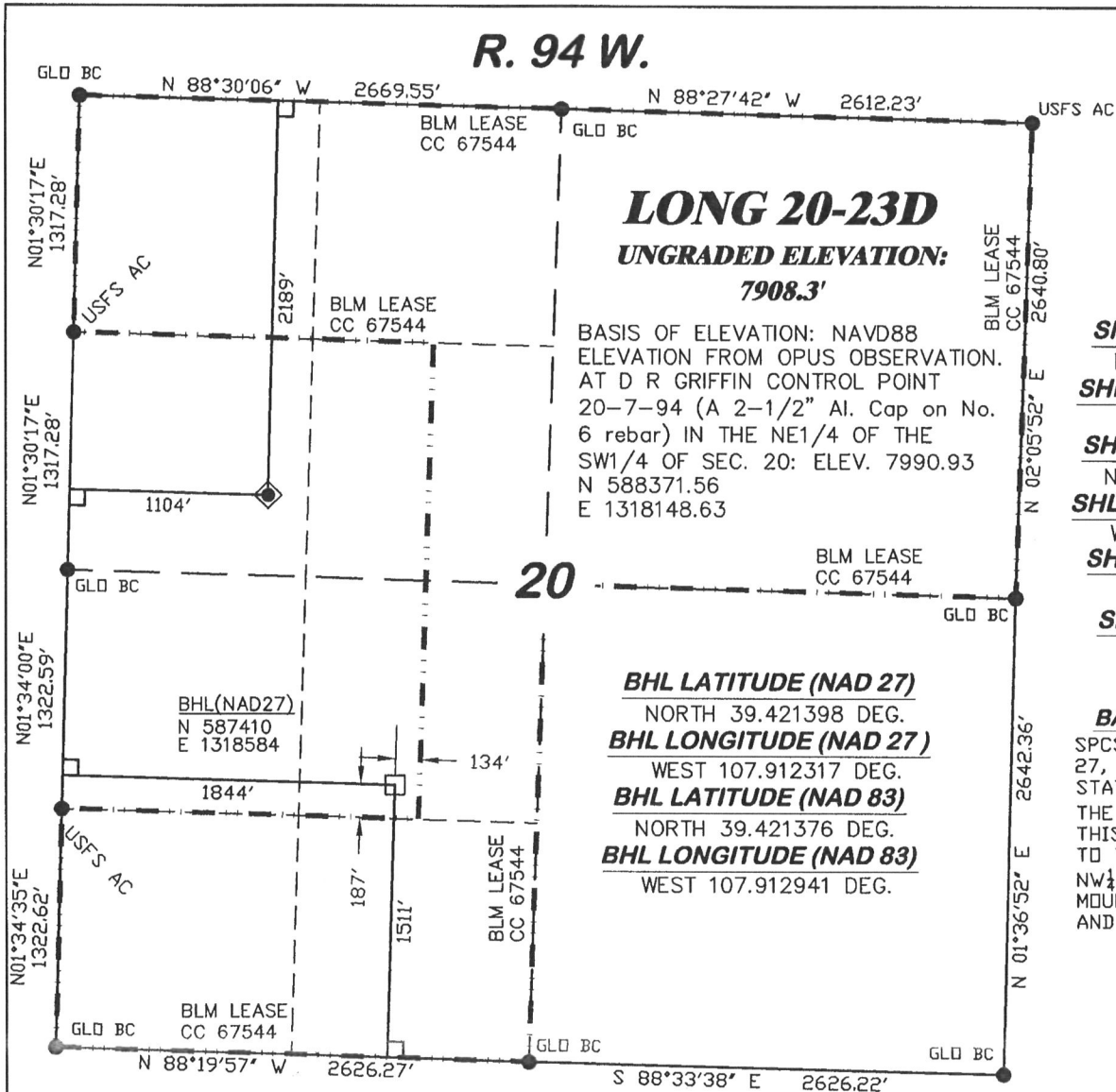


R. 94 W.



LONG 20-23D
UNGRADED ELEVATION:
7908.3'

BASIS OF ELEVATION: NAVD88
ELEVATION FROM OPUS OBSERVATION.
AT D R GRIFFIN CONTROL POINT
20-7-94 (A 2-1/2" Al. Cap on No.
6 rebar) IN THE NE1/4 OF THE
SW1/4 OF SEC. 20: ELEV. 7990.93
N 588371.56
E 1318148.63

BHL LATITUDE (NAD 27)

NORTH 39.421398 DEG.

BHL LONGITUDE (NAD 27)

WEST 107.912317 DEG.

BHL LATITUDE (NAD 83)

NORTH 39.421376 DEG.

BHL LONGITUDE (NAD 83)

WEST 107.912941 DEG.

SCALE: 1" = 1000'

T. 7 S.

SHL LATITUDE (NAD 27)

NORTH 39.425748 DEG.

SHL LONGITUDE (NAD 27)

WEST 107.914935 DEG.

SHL LATITUDE (NAD 83)

NORTH 39.425726 DEG.

SHL LONGITUDE (NAD 83)

WEST 107.915560 DEG.

SHL NORTHING (NAD27)

589013.27

SHL EASTING (NAD27)

1317886.53

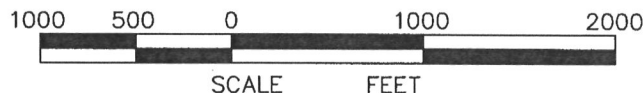
BASIS OF BEARING

SPCS CO CENTRAL NAD
27, BASED ON NGS TRIG.
STATION "FABER"

THE BASIS OF BEARINGS FOR
THIS SURVEY IS REFERENCED
TO THE NORTH LINE OF THE
NW1/4 OF SECTION 20, BEING
MONUMENTED WITH GLO BC'S
AND BEARING N 88° 30' 06" W.

LEGEND

- ◆ WELL LOCATION
- FOUND MONUMENT
- L DENOTES 90° TIE
- BHL LOCATION



SURVEYOR'S STATEMENT

I, Ronald C. Rennke, an employee and agent on behalf of D.R. GRIFFIN & ASSOCIATES, INC. state the plat hereon is a correct representation of a survey made under my supervision on September 18, 2008 of the shown LONG 20-23D staked on the ground as shown hereon.

NOTES

GPS OPERATOR RICHARD BULLEN
OBSERVED A PDOP OF 2.5.

ALL GPS OBSERVATIONS ARE IN
COMPLIANCE WITH COGCC RULE NO. 215.

HIGH PLATEAU DESERT
2-TRACK ROAD WITHIN
400' RADIUS OF WELL SITE SEE EXHIBIT 2.
SURFACE USE IS NATIVE WOODS

EXHIBIT 1

DRG RIFFIN & ASSOCIATES, INC.
(307) 362-5028 1414 ELK ST., ROCK SPRINGS, WY 82901

DATE DRAWN: 9/22/08-RAB

SCALE: 1" = 1000'

REVISED: 6/08/09-WWG

JOB No. 15455

INCREASE IMPROVEMENT
RADIUS - 400'

EXHIBIT 1

**PLAT OF DRILLING LOCATION
FOR
NOBLE ENERGY, INC.**

**2189' F/NL & 1104' F/WL, SECTION 20,
T. 7 S., R. 94 W., 6th P.M.
GARFIELD COUNTY, COLORADO**