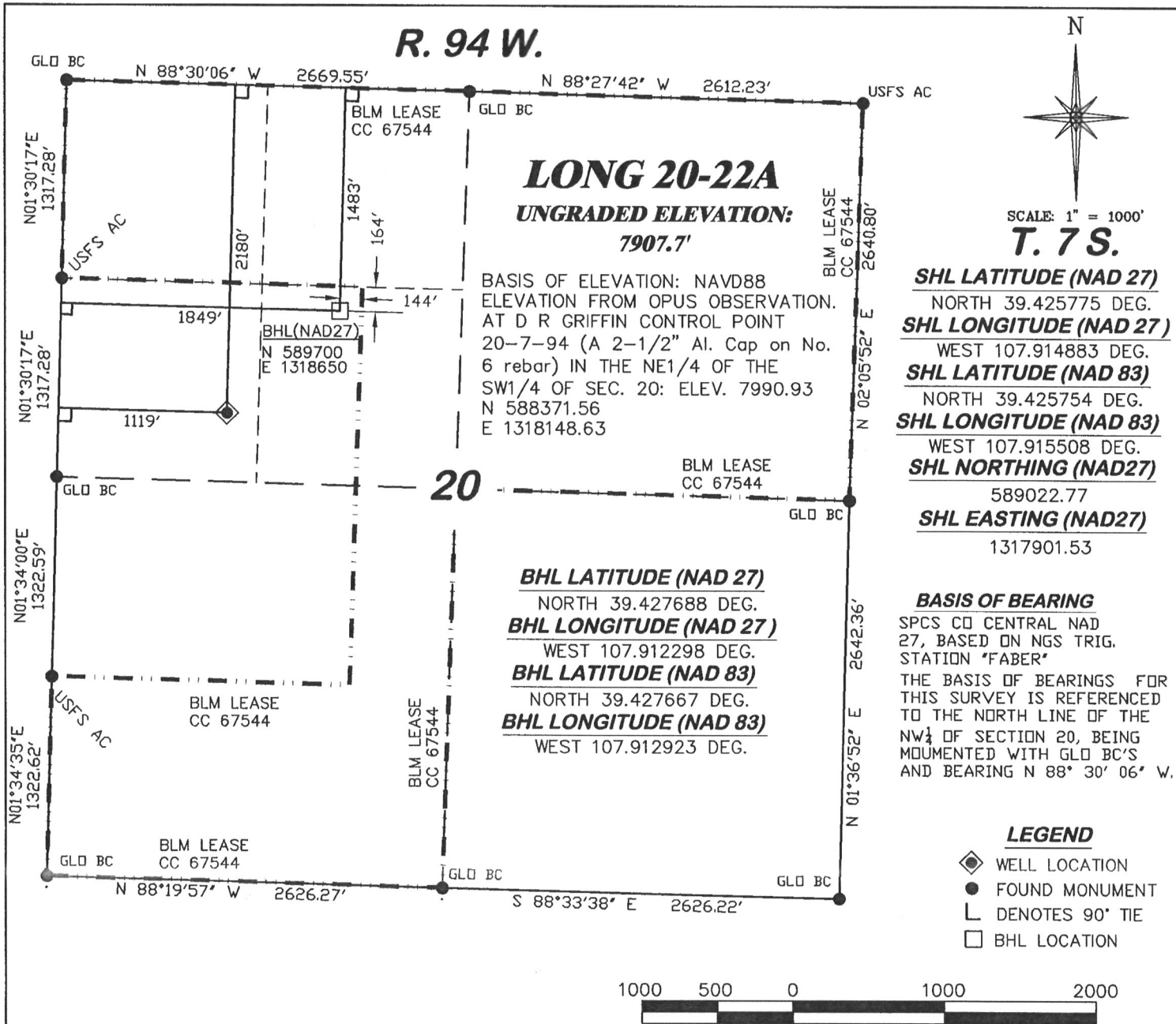


R. 94 W.

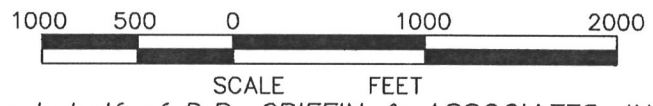


SCALE: 1" = 1000'
T. 7 S.

SHL LATITUDE (NAD 27)
NORTH 39.425775 DEG.
SHL LONGITUDE (NAD 27)
WEST 107.914883 DEG.
SHL LATITUDE (NAD 83)
NORTH 39.425754 DEG.
SHL LONGITUDE (NAD 83)
WEST 107.915508 DEG.
SHL NORTHING (NAD27)
589022.77
SHL EASTING (NAD27)
1317901.53

BASIS OF BEARING
SPCS CO CENTRAL NAD 27, BASED ON NGS TRIG. STATION "FABER"
THE BASIS OF BEARINGS FOR THIS SURVEY IS REFERENCED TO THE NORTH LINE OF THE NW 1/4 OF SECTION 20, BEING DOCUMENTED WITH GLO BC'S AND BEARING N 88° 30' 06" W.

- LEGEND**
- ◆ WELL LOCATION
 - FOUND MONUMENT
 - L DENOTES 90° TIE
 - BHL LOCATION



SURVEYOR'S STATEMENT

I, Ronald C. Rennke, an employee and agent on behalf of D.R. GRIFFIN & ASSOCIATES, INC. state the plat hereon is a correct representation of a survey made under my supervision on September 18, 2008 of the shown LONG 20-22A staked on the ground as shown hereon.

NOTES

- GPS OPERATOR RICHARD BULLEN OBSERVED A PDOP OF 2.5.
- ALL GPS OBSERVATIONS ARE IN COMPLIANCE WITH COGCC RULE NO. 215.
- HIGH PLATEAU DESERT 2-TRACK ROAD WITHIN 400' RADIUS OF WELL SITE SEE EXHIBIT 2.
- SURFACE USE IS NATIVE WOODS

8/17/09
Ronald C. Rennke
COLORADO PLS No. 37065

EXHIBIT 1

<p>DRG RIFFIN & ASSOCIATES, INC. (307) 362-5028 1414 ELK ST., ROCK SPRINGS, WY 82901</p>		<p>PLAT OF DRILLING LOCATION FOR NOBLE ENERGY, INC.</p>	
DATE DRAWN: 9/22/08-RAB	SCALE: 1" = 1000'	<p>2180' F/NL & 1119' F/WL, SECTION 20, T. 7 S., R. 94 W., 6th P.M. GARFIELD COUNTY, COLORADO</p>	
REVISED: 6/08/09-WWG	JOB No. 15455		
INCREASE IMPROVEMENT RADIUS - 400'	EXHIBIT 1		