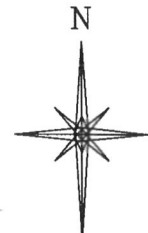
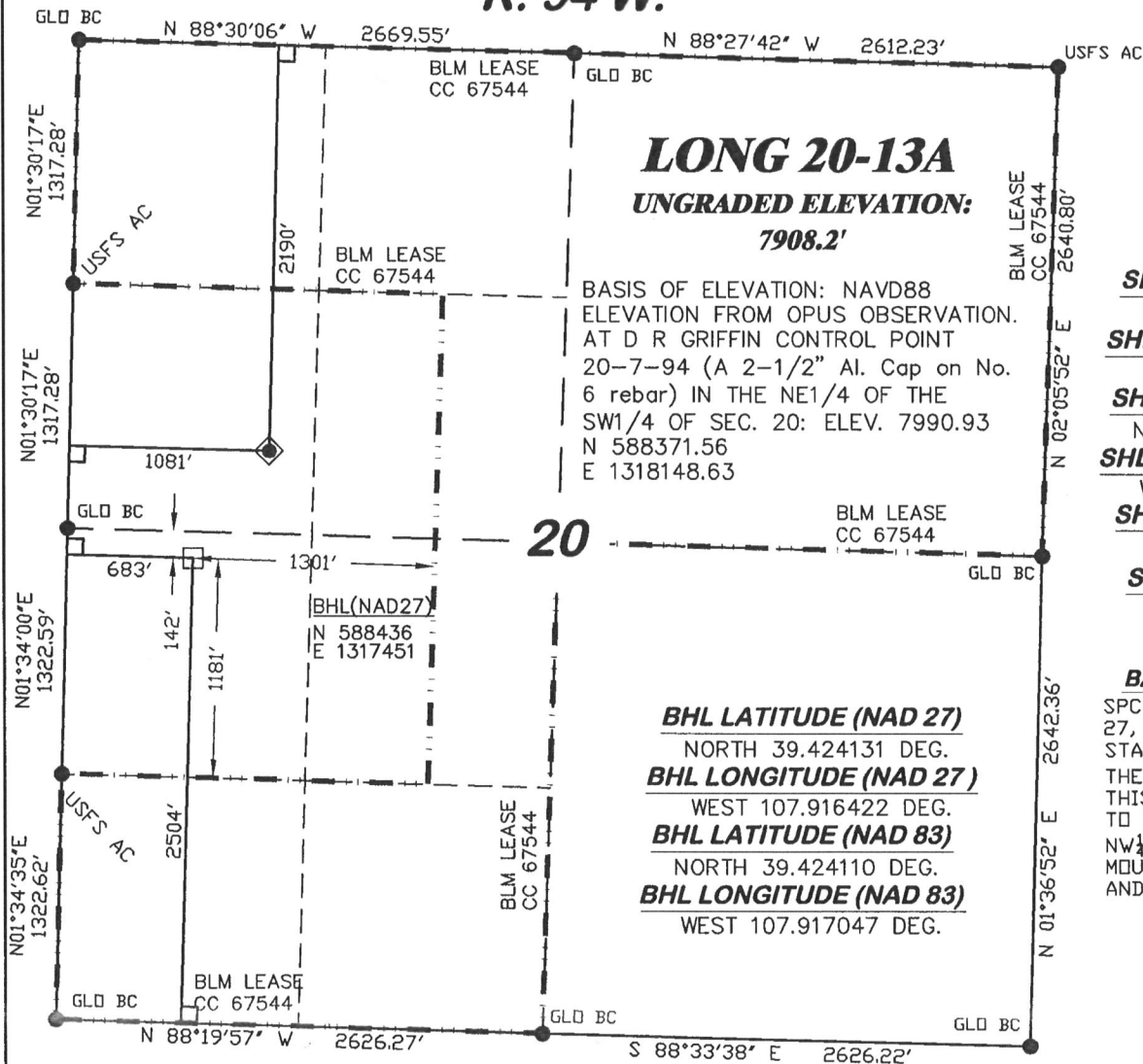


**R. 94 W.**



SCALE: 1" = 1000'

**T. 7 S.**

**SHL LATITUDE (NAD 27)**

NORTH 39.425746 DEG.

**SHL LONGITUDE (NAD 27)**

WEST 107.915015 DEG.

**SHL LATITUDE (NAD 83)**

NORTH 39.425725 DEG.

**SHL LONGITUDE (NAD 83)**

WEST 107.915640 DEG.

**SHL NORTHING (NAD27)**

589013.27

**SHL EASTING (NAD27)**

1317864.03

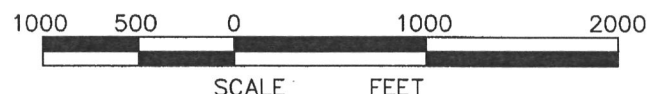
**BASIS OF BEARING**

SPCS CO CENTRAL NAD 27, BASED ON NGS TRIG. STATION "FABER"

THE BASIS OF BEARINGS FOR THIS SURVEY IS REFERENCED TO THE NORTH LINE OF THE NW 1/4 OF SECTION 20, BEING MONUMENTED WITH GLO BC'S AND BEARING N 88° 30' 06" W.

**LEGEND**

- ◆ WELL LOCATION
- FOUND MONUMENT
- L DENOTES 90° TIE
- BHL LOCATION



**SURVEYOR'S STATEMENT**

I, Ronald C. Rennke, an employee and agent on behalf of D.R. GRIFFIN & ASSOCIATES, INC. state the plat hereon is a correct representation of a survey made under my supervision on September 18, 2008 of the shown LONG 20-13A staked on the ground as shown hereon.

**NOTES**

GPS OPERATOR RICHARD BULLEN  
OBSERVED A PDOP OF 2.5.

ALL GPS OBSERVATIONS ARE IN  
COMPLIANCE WITH COGCC RULE NO. 215.

HIGH PLATEAU DESERT  
2-TRACK ROAD WITHIN  
400' RADIUS OF WELL SITE SEE EXHIBIT 2.  
SURFACE USE IS NATIVE WOODS

8/17/09  
*Ronald C. Rennke*  
COLORADO PLS No. 37065

EXHIBIT 1

**DRG** RIFFIN & ASSOCIATES, INC.  
(307) 362-5028 1414 ELK ST., ROCK SPRINGS, WY 82901

DATE DRAWN: 9/22/08-RAB	SCALE: 1" = 1000'
REVISED: 6/08/09-WWG	JOB No. 15455
INCREASE IMPROVEMENT RADIUS - 400'	EXHIBIT 1

**PLAT OF DRILLING LOCATION  
FOR  
NOBLE ENERGY, INC.**

**2190' F/NL & 1081' F/WL, SECTION 20,  
T. 7 S., R. 94 W., 6th P.M.  
GARFIELD COUNTY, COLORADO**