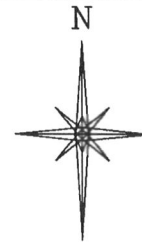
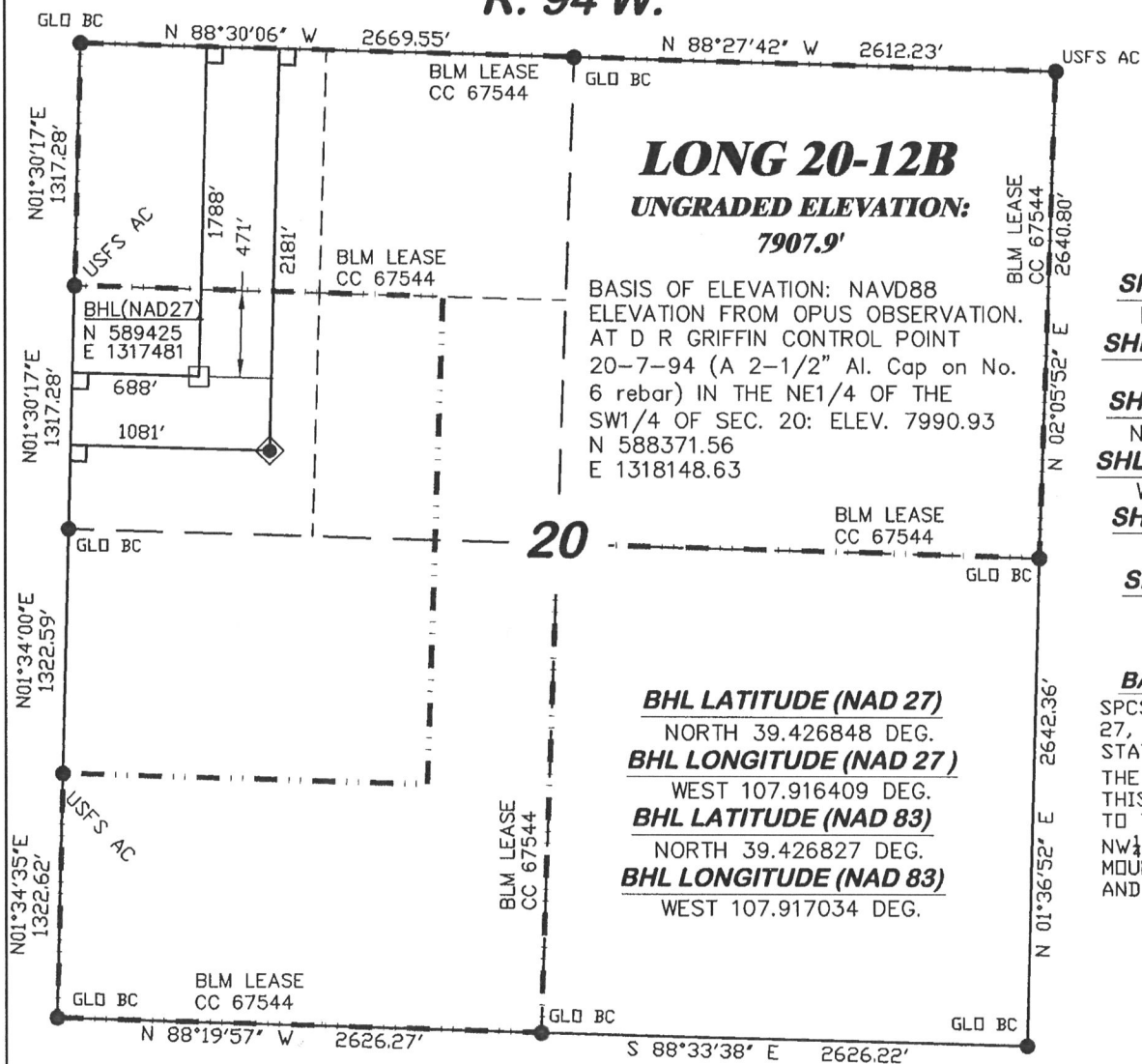


**R. 94 W.**



SCALE: 1" = 1000'

**T. 7 S.**

**SHL LATITUDE (NAD 27)**

NORTH 39.425772 DEG.

**SHL LONGITUDE (NAD 27)**

WEST 107.915016 DEG.

**SHL LATITUDE (NAD 83)**

NORTH 39.425751 DEG.

**SHL LONGITUDE (NAD 83)**

WEST 107.915641 DEG.

**SHL NORTHING (NAD27)**

589022.77

**SHL EASTING (NAD27)**

1317864.03

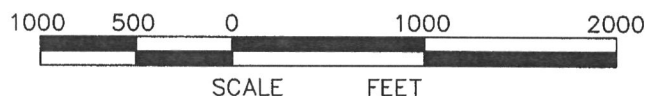
**BASIS OF BEARING**

SPCS CO CENTRAL NAD  
27, BASED ON NGS TRIG.  
STATION "FABER"

THE BASIS OF BEARINGS FOR  
THIS SURVEY IS REFERENCED  
TO THE NORTH LINE OF THE  
NW $\frac{1}{4}$  OF SECTION 20, BEING  
MONUMENTED WITH GLO BC'S  
AND BEARING N 88° 30' 06" W.

**LEGEND**

- ◆ WELL LOCATION
- FOUND MONUMENT
- L DENOTES 90° TIE
- BHL LOCATION



**SURVEYOR'S STATEMENT**

I, Ronald C. Rennke, an employee and agent on behalf of D.R. GRIFFIN & ASSOCIATES, INC. state the plat hereon is a correct representation of a survey made under my supervision on September 18, 2008 of the shown LONG 20-12B staked on the ground as shown hereon.

**NOTES**


GPS OPERATOR RICHARD BULLEN  
OBSERVED A PDOP OF 2.5.

ALL GPS OBSERVATIONS ARE IN  
COMPLIANCE WITH COGCC RULE NO. 215.

HIGH PLATEAU DESERT  
2-TRACK ROAD WITHIN  
400' RADIUS OF WELL SITE SEE EXHIBIT 2.  
SURFACE USE IS NATIVE WOODS

8/17/09  
*Ronald C. Rennke*  
COLORADO PLS No. 37065

EXHIBIT 1

 <b>RIFFIN &amp; ASSOCIATES, INC.</b> (307) 362-5028 1414 ELK ST., ROCK SPRINGS, WY 82901		<b>PLAT OF DRILLING LOCATION FOR NOBLE ENERGY, INC.</b>	
DATE DRAWN: 9/22/08-RAB	SCALE: 1" = 1000'	<b>2181' F/NL &amp; 1081' F/WL, SECTION 20, T. 7 S., R. 94 W., 6th P.M. GARFIELD COUNTY, COLORADO</b>	
REVISED: 6/08/09-WWG	JOB No. 15455		
INCREASE IMPROVEMENT RADIUS - 400'	EXHIBIT 1		