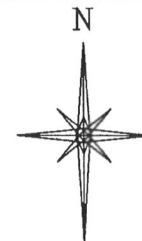
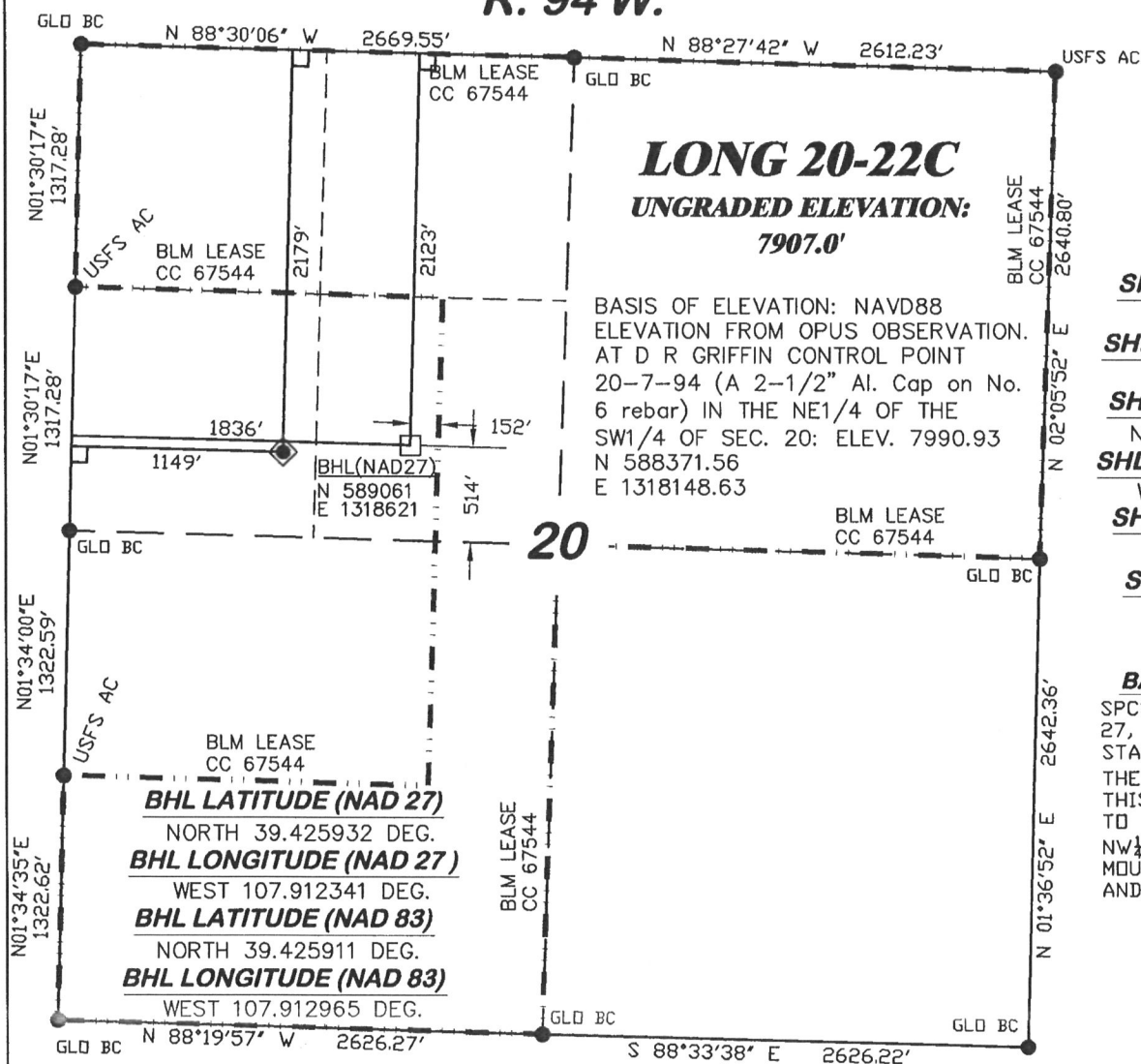


R. 94 W.



SCALE: 1" = 1000'

T. 7 S.

SHL LATITUDE (NAD 27)

NORTH 39.425777 DEG.

SHL LONGITUDE (NAD 27)

WEST 107.914777 DEG.

SHL LATITUDE (NAD 83)

NORTH 39.425756 DEG.

SHL LONGITUDE (NAD 83)

WEST 107.915402 DEG.

SHL NORTHING (NAD27)

589022.77

SHL EASTING (NAD27)

1317931.53

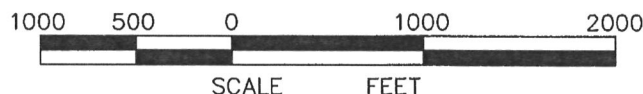
BASIS OF BEARING

SPCS CO CENTRAL NAD 27, BASED ON NGS TRIG. STATION "FABER"

THE BASIS OF BEARINGS FOR THIS SURVEY IS REFERENCED TO THE NORTH LINE OF THE NW $\frac{1}{4}$ OF SECTION 20, BEING MONUMENTED WITH GLO BC'S AND BEARING N 88° 30' 06" W.

LEGEND

- ◆ WELL LOCATION
- FOUND MONUMENT
- L DENOTES 90° TIE
- BHL LOCATION



SURVEYOR'S STATEMENT

I, Ronald C. Rennke, an employee and agent on behalf of D.R. GRIFFIN & ASSOCIATES, INC. state the plat hereon is a correct representation of a survey made under my supervision on September 18, 2008 of the shown LONG 20-22C staked on the ground as shown hereon.

NOTES

GPS OPERATOR RICHARD BULLEN
OBSERVED A PDOP OF 2.5.

ALL GPS OBSERVATIONS ARE IN
COMPLIANCE WITH COGCC RULE NO. 215.

HIGH PLATEAU DESERT
2-TRACK ROAD WITHIN
400' RADIUS OF WELL SITE SEE EXHIBIT 2.
SURFACE USE IS NATIVE WOODS

8/17/09
Ronald C Rennke
COLORADO PLS No. 37065

EXHIBIT 1

DRG RIFFIN & ASSOCIATES, INC.
(307) 362-5028 1414 ELK ST., ROCK SPRINGS, WY 82901

**PLAT OF DRILLING LOCATION
FOR
NOBLE ENERGY, INC.**

DATE DRAWN: 9/22/08-RAB

SCALE: 1" = 1000'

REVISED: 6/08/09-WWG

JOB No. 15455

INCREASE IMPROVEMENT
RADIUS - 400'

EXHIBIT 1

**2179' F/NL & 1149' F/WL, SECTION 20,
T. 7 S., R. 94 W., 6th P.M.
GARFIELD COUNTY, COLORADO**