

DRG RIFFIN & ASSOCIATES, INC.
 1414 ELK ST., ROCK SPRINGS, WY 82901

(307) 362-5028

DRAWN: 9/25/08 - RCR

REVISED: n/a

SCALE: 1" = MILE

DRG JOB No. 15455

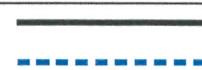
EXHIBIT 5

**PROPOSED ACCESS FOR 20F PAD
 NOBLE ENERGY, INC.**

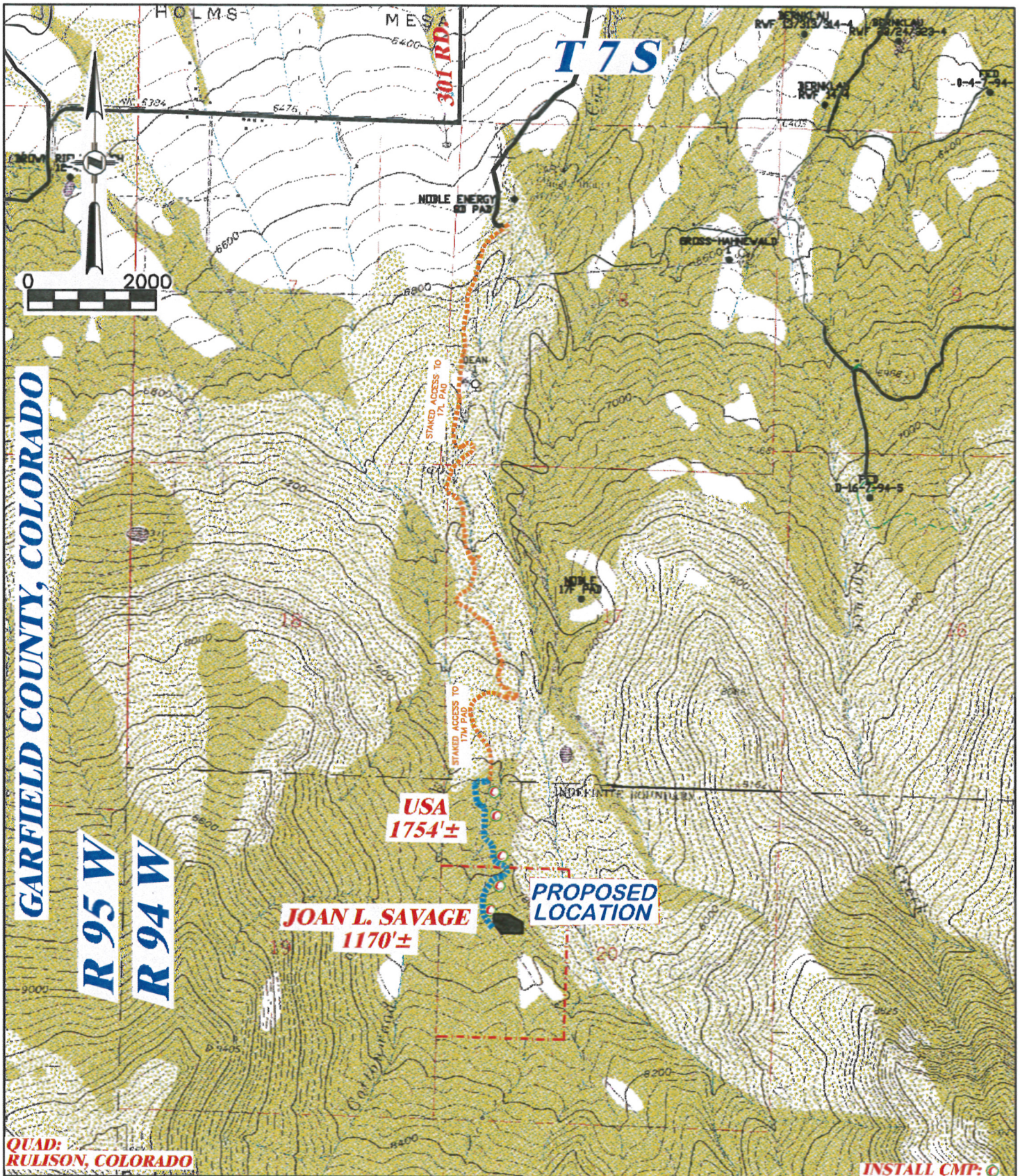
**RULISON FEDERAL 20-11D, 20-21D, , 20-32A, 20-32B, 20-32C &
 20-32D; Long 20-12A, 20-12B, 20-12C, 20-12D, 20-13A, 20-22A,
 20-22B, 20-22C, 20-22D, 20-23A, 20-23B, 20-23C, 20-23D**

EXISTING ROAD

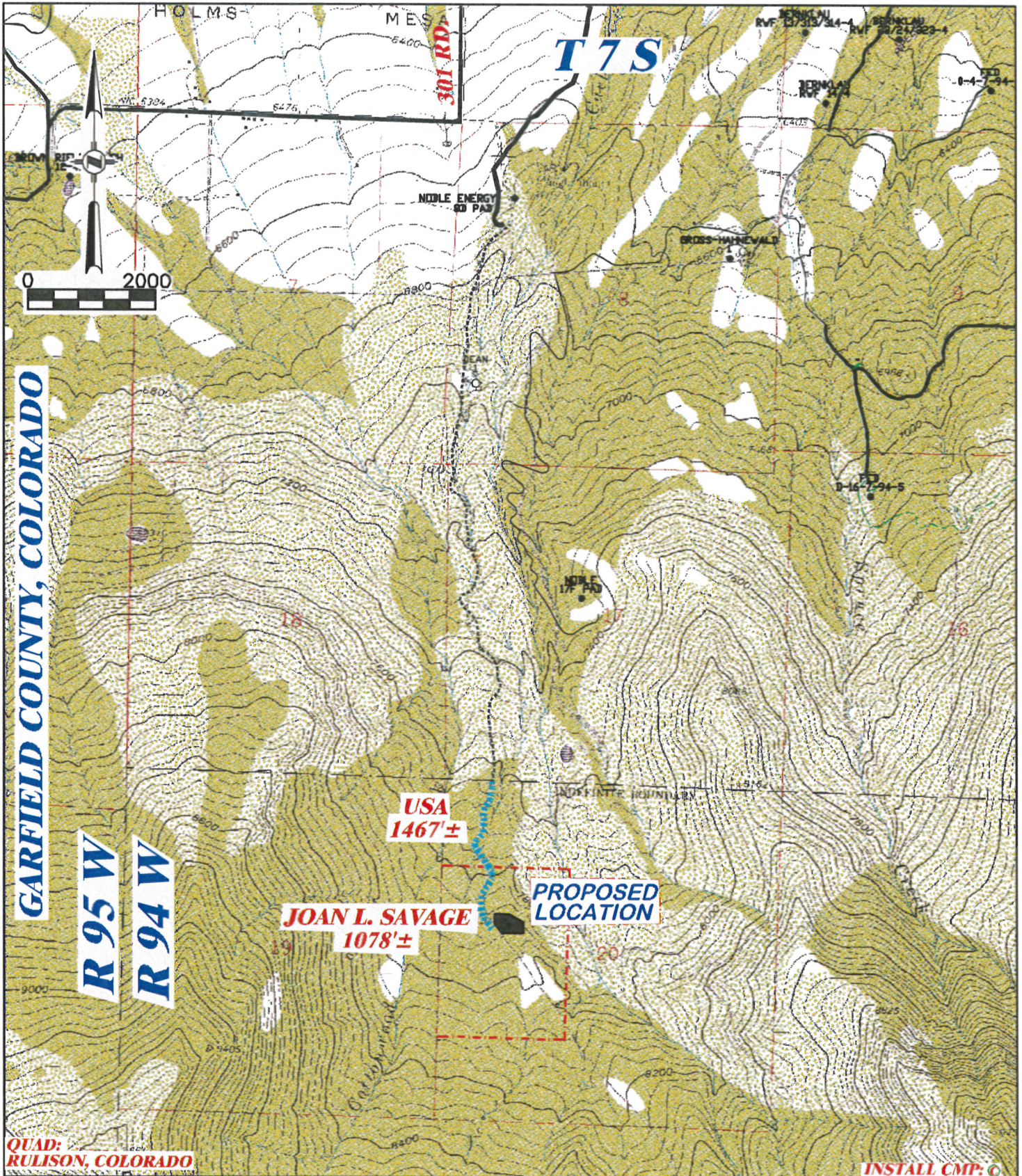
PROPOSED ROAD



**TOPO MAP
 A**



DRG RIFFIN & ASSOCIATES, INC. (307) 362-5028 1414 ELK ST., ROCK SPRINGS, WY 82901		PROPOSED ROAD FOR 20F PAD NOBLE ENERGY, INC. RULISON FEDERAL 20-11D, 20-21D, , 20-32A, 20-32B, 20-32C & 20-32D; Long 20-12A, 20-12B, 20-12C, 20-12D, 20-13A, 20-22A, 20-22B, 20-22C, 20-22C, 20-22D, 20-23A, 20-23B, 20-23C, 20-23D	
DRAWN: 9/25/08 - RCR		PROPOSED LENGTH: 2961'±	
REVISED: n/a		EXISTING ROAD —————	TOPO MAP B
EXHIBIT 5		PROPOSED ROAD - - - - -	



DRG RIFFIN & ASSOCIATES, INC. (307) 362-5028 1414 ELK ST., ROCK SPRINGS, WY 82901		PROPOSED PIPELINE FOR 20F PAD NOBLE ENERGY, INC. RULISON FEDERAL 20-11D, 20-21D, , 20-32A, 20-32B, 20-32C & 20-32D; Long 20-12A, 20-12B, 20-12C, 20-12D, 20-13A, 20-22A, 20-22B, 20-22C, 20-22C, 20-22D, 20-23A, 20-23B, 20-23C, 20-23D	
DRAWN: 7/22/09 - WWG		PROPOSED LENGTH: 2545'±	
SCALE: 1" = 2000'		EXISTING ROAD —————	TOPO MAP
DRG JOB No. 15455		PROPOSED PIPELINE —————	C
EXHIBIT 5			