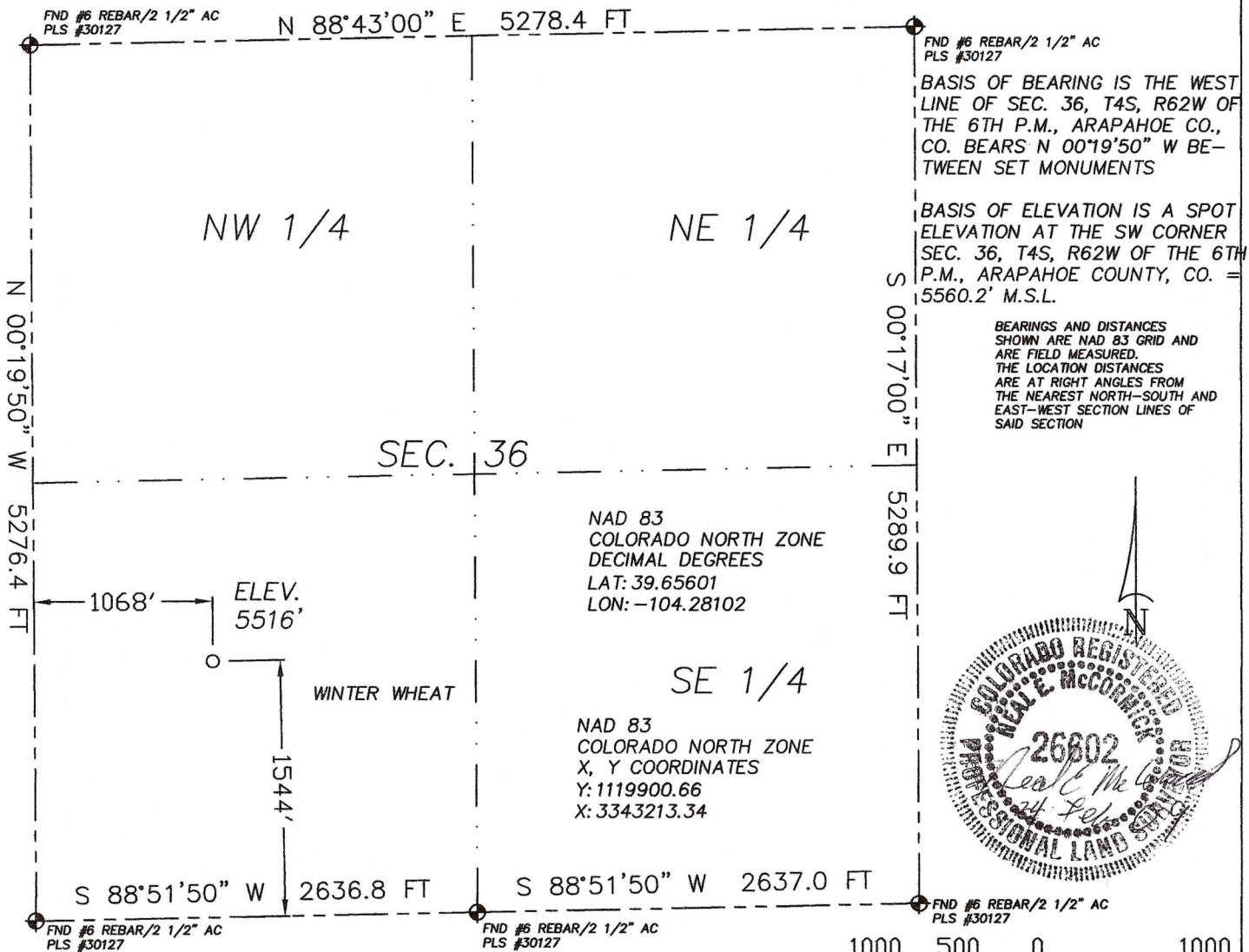


The accompanying plat is an accurate representation showing the location of a proposed well. This location may be described as a point 1544 feet North of the South line, and 1068 feet east of the West line of Section 36, Township 4 South, Range 62 West of the 6th P.M. Arapahoe County, Colorado. The surface elevation at this point is 5516 feet above m.s.l.
 Note: This is not a land survey plat.
 There are no visible improvements within 200 feet of the location



2.245 PDOP

GPS OPERATOR: NEAL MCCORMICK

- ☼ Dual Producer
- Oil well
- ☼ Gas Well
- Dry Hole

○ Location

— Fence Line

— Half-Sec. Line

--- Section Line

==== Road

== Trail

◆ Survey Monument

Scale 1" = 1000'



P.O. Box 296 Phone 970-774-3602
 Holyoke, CO 80734 Fax 970-774-3601

DATE OF FIELD WORK:

21 FEBRUARY 2009

DATE OF DRAWING:

24 FEBRUARY 2009

STATE BRADBURY 13-36

NW 1/4 SW 1/4 SEC. 36, T4S, R62W

EDWARD MIKE DAVIS, LLC.

ARAPAHOE COUNTY, COLORADO

W364S62GPS

2435-260