

RECEIVED

OCT 16 2009

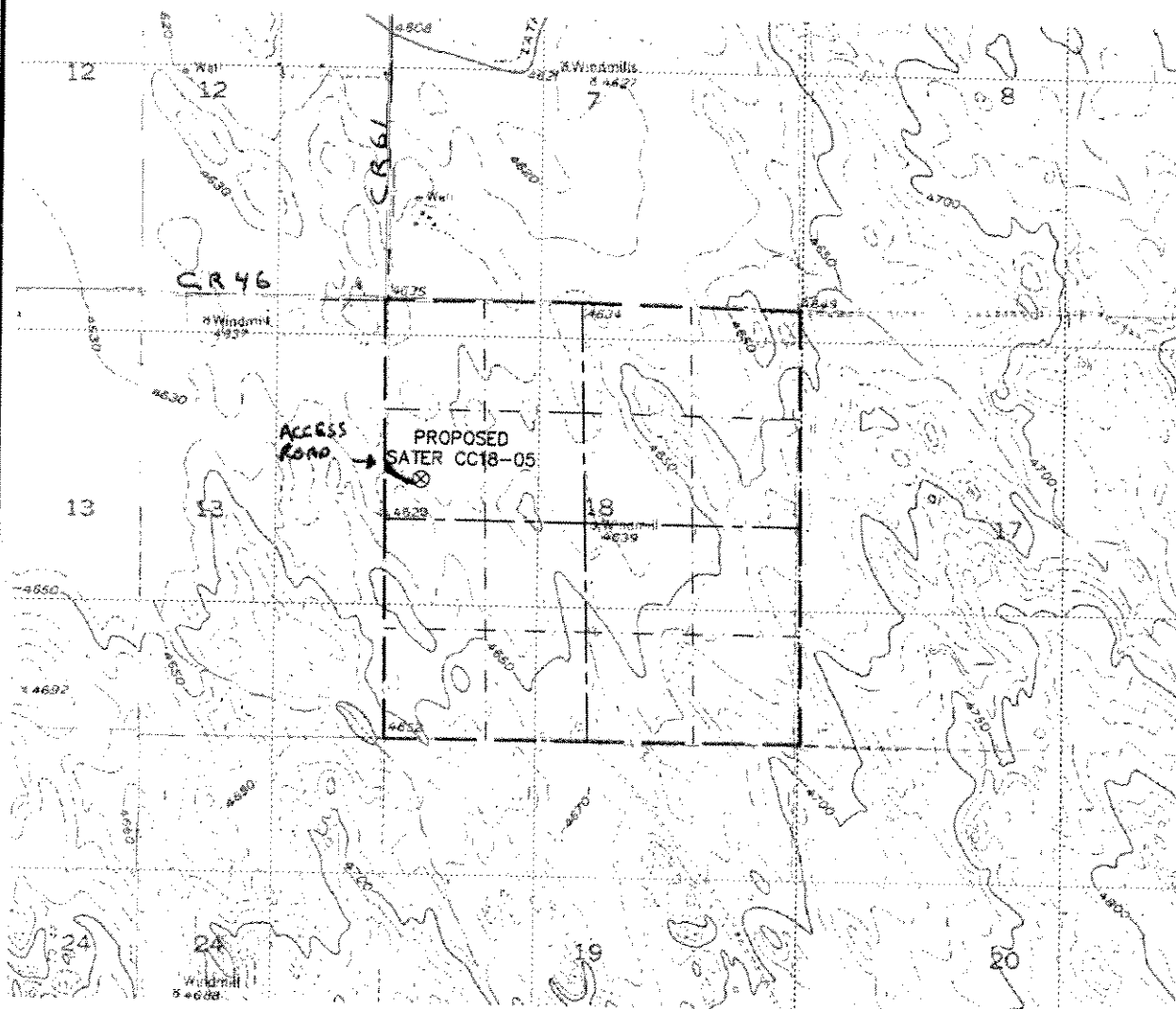
COGCC

Steil Surveying Services, LLC

1102 West 19th Street P.O. BOX 2073
ACCESS ROAD MAP

Cheyenne, Wyoming 82009

SECTION 18
TOWNSHIP 4 NORTH
RANGE 63 WEST



0 2000

Scale: 1" = 2000'