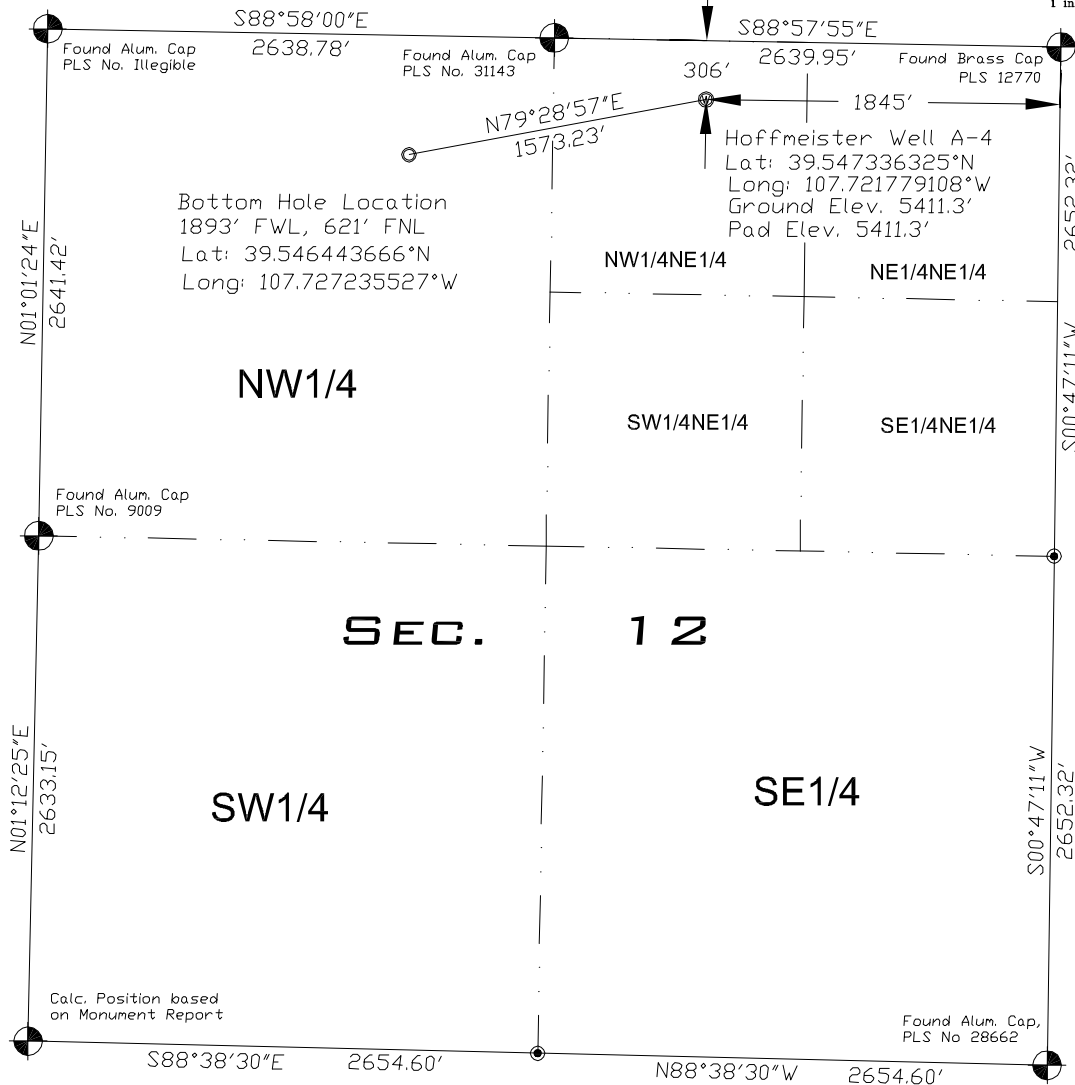
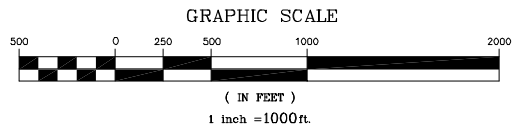


**ANTERO RESOURCES CORPORATION
HOFFMEISTER WELL A-4**

SITUATED IN
**SEC. 12, T. 6 S., R. 93 W. OF THE 6TH P.M.
COUNTY OF GARFIELD, STATE OF COLORADO**



Bearings shown hereon
are based upon RTK GPS
observations.

Observed PDOP = 1.4
at time of well staking

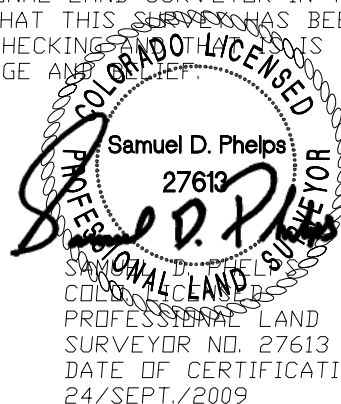
Improvements within 200'
are shown on sheet 2

Land use:
Irrigated Rangeland

THIS WELL LOCATION PLAT HAS BEEN PREPARED FOR ANTERO RESOURCES CORP. TO LOCATE THE
HOFFMEISTER A-4 WELL BEING 306 FEET FROM THE NORTH LINE AND 1,845 FEET FROM THE EAST LINE
IN THE NW1/4NE1/4 OF SECTION 12, TOWNSHIP 6 SOUTH, RANGE 93 WEST OF THE 6TH P.M.
COUNTY OF GARFIELD, STATE OF COLORADO.

SURVEYORS CERTIFICATE

I, THE UNDERSIGNED, A LICENSED PROFESSIONAL LAND SURVEYOR IN THE
STATE OF COLORADO, DO HEREBY CERTIFY THAT THIS SURVEY HAS BEEN
MADE UNDER MY DIRECT SUPERVISION AND CHECKING AND THAT IT IS TRUE
AND CORRECT TO THE BEST OF MY KNOWLEDGE AND BELIEF.



SURVCO, INC.

RTK GPS and Conventional Land Surveying Services

826-1/2 Grand Avenue
Post Office Box 2782
Glenwood Springs, CO. 81602-2782
Phone: (970) 945-5945 Fax: (970) 945-5946
Email: survco@gmail.com

Surveyed: 15/DEC./2006	Scale: 1 inch = 1000 feet
Drafted: 24/SEPT./2009	.dwg: Hoffmeister A4 Plat 1
Approved:	Sheet: 1 of 6

Legend

- Field Surveyed Section Corner Locations
- ⊙ Field Surveyed Well Location
- ⊙ Section Corner Location Based on GLD or Calculated Information
- ⊙ Calculated Bottom Hole Location

Reference Notes

- 1) T6S, R93W 6th PM GLD Plat
- 2) USGS Quad Map: Rifle, CO.
- 3) Elevations Based on NAVD83
- 4) Lat/Long Values are NAD83
- 5) All Top and Bottom Locations are measured 90° from Section Lines.

**PLAT NO. 1
"LOCATION PLAT"**