



01692454

RECEIVED

OCT 18 2009

COGCC

ACCESS ROAD

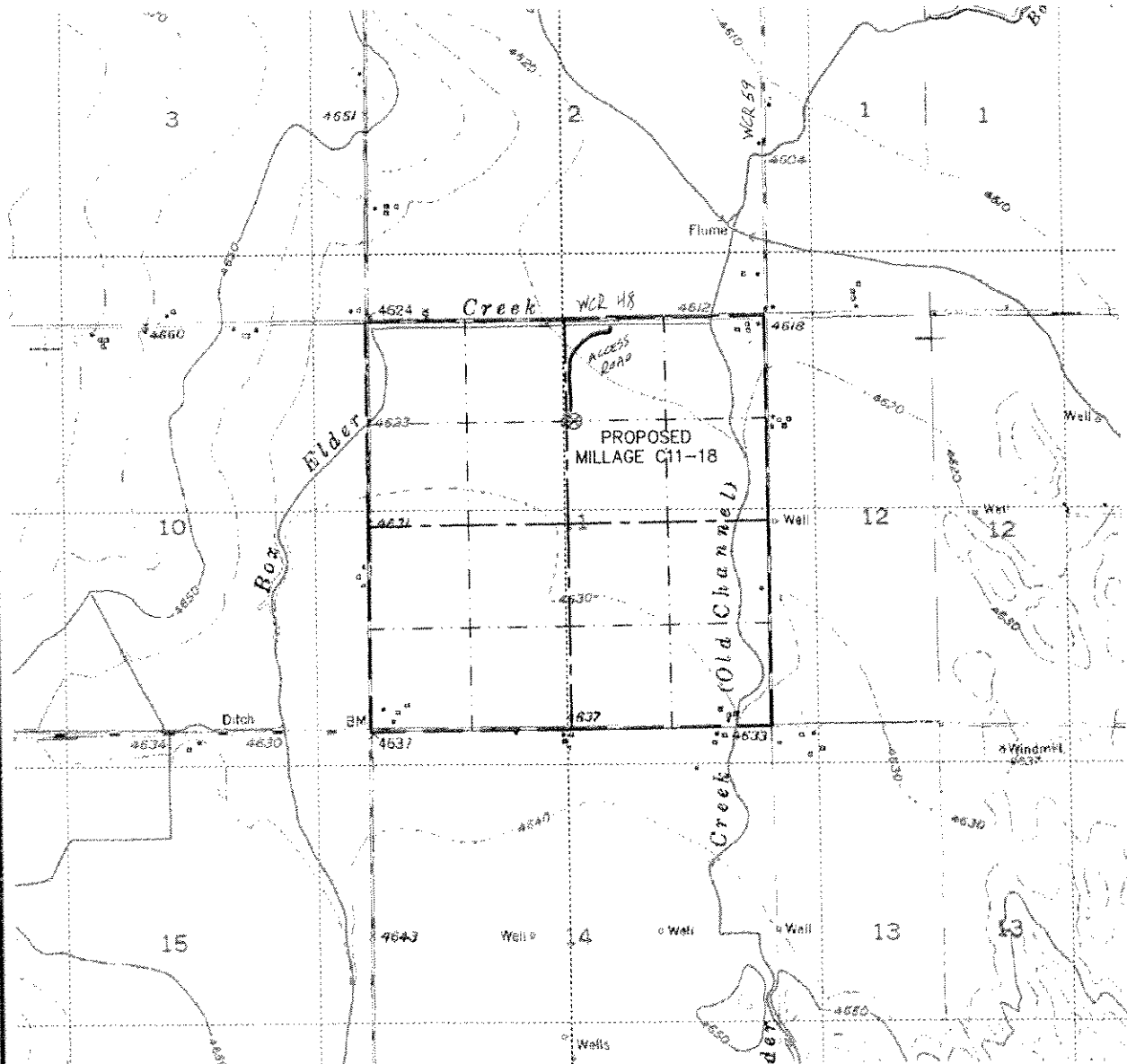
Steil Surveying Services, LLC

1102 West 19th Street P.O. BOX 2073

Cheyenne, Wyoming 82009

ACCESS ROAD MAP

SECTION 11
TOWNSHIP 4 NORTH
RANGE 64 WEST



0 2000

Scale: 1" = 2000'