

Encana Oil & Gas (USA) INC.

Well location, EUREKA UNIT #8815D-24 D30 397 (SURFACE LOCATION), located as shown in Lot 4 of Section 19, T3S, R97W, 6th P.M., Rio Blanco County, Colorado.

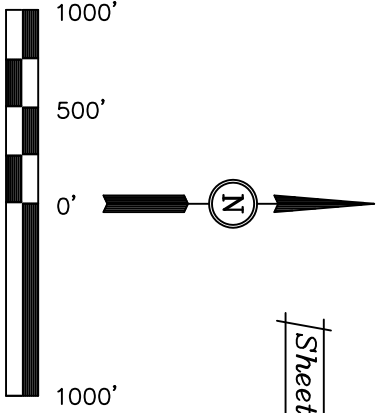
BASIS OF ELEVATION

BENCH MARK (H79) LOCATED IN THE NE 1/4 OF SECTION 35, T4S, R98W, 6th P.M. TAKEN FROM THE BULL FORK QUADRANGLE, COLORADO, 7.5 MINUTE SERIES (TOPO GRAPHICAL MAP) PUBLISHED BY THE UNITED STATES DEPARTMENT OF THE INTERIOR, GEOLOGICAL SURVEY. SAID ELEVATION IS MARKED AS BEING 8535 FEET.

BASIS OF BEARINGS

BASIS OF BEARINGS IS A G.P.S. OBSERVATION.

Sheet 1n of 11

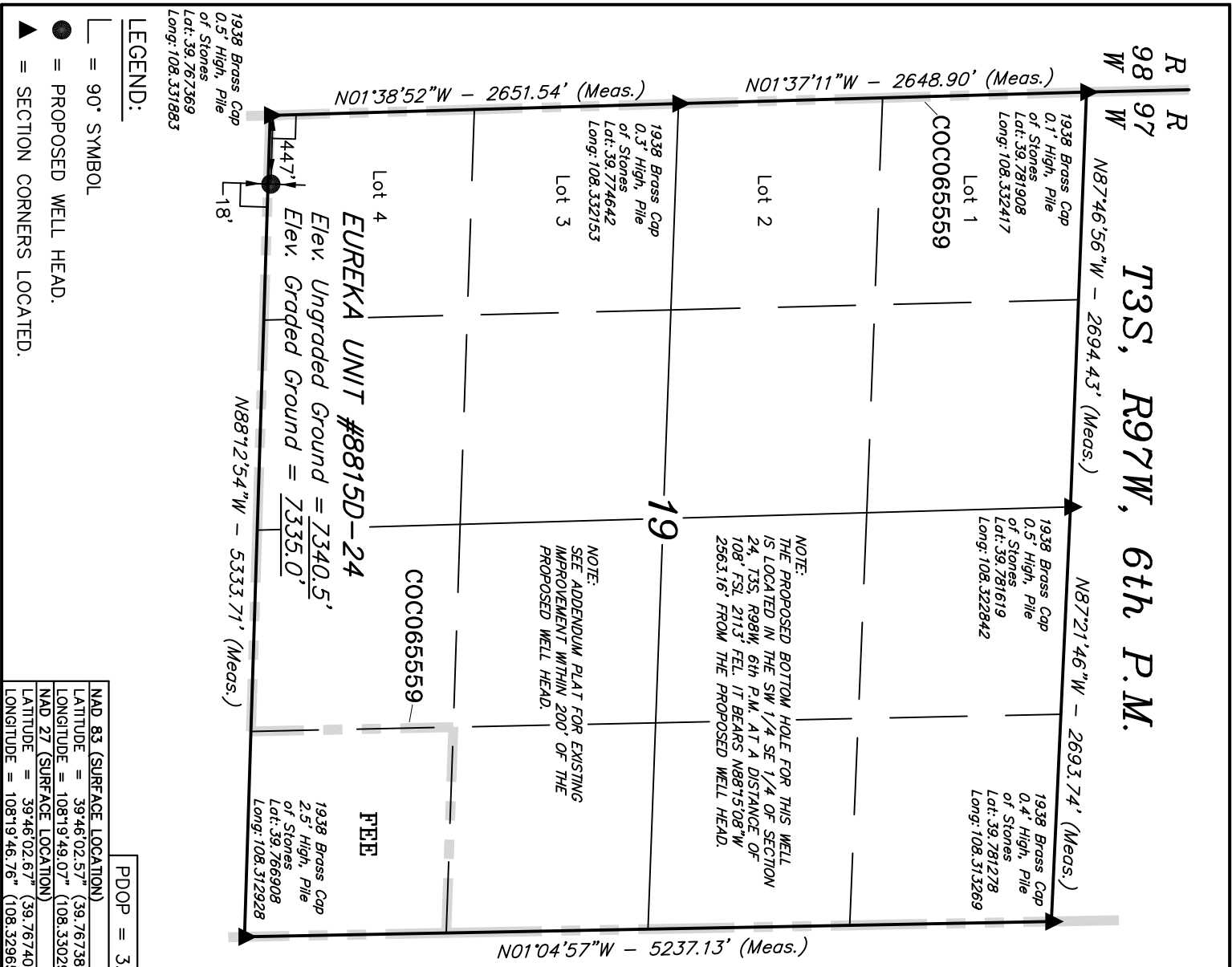


CERTIFICATE

THIS IS TO CERTIFY THAT THE ABOVE PLAT WAS PREPARED FROM FIELD NOTES OF ACTUAL SURVEYS MADE BY ME OR UNDER MY SUPERVISION AND THAT THE SAME ARE TRUE AND CORRECT TO THE BEST OF MY KNOWLEDGE AND BELIEF.

REGISTERED LAND SURVEYOR  
REGISTRATION NO. 17492  
STATE OF COLORADO

UTAH ENGINEERING & LAND SURVEYING  
85 SOUTH 200 EAST - VERNAL, UTAH 84078  
(435) 789-1017



LEGEND:

- 90° SYMBOL
- PROPOSED WELL HEAD.
- SECTION CORNERS LOCATED.

PDOP = 3.6	
NAD 83 (SURFACE LOCATION)	
LATITUDE = 39°46'02.57" (39.767381)	
LONGITUDE = 108°19'49.07" (108.330297)	
NAD 27 (SURFACE LOCATION)	
LATITUDE = 39°46'02.67" (39.767408)	
LONGITUDE = 108°19'46.76" (108.329656)	

SCALE 1" = 1000'		DATE SURVEYED: 01-22-09	DATE DRAWN: 01-29-09
PARTY	REFERENCES		
G.O. B.H. D.R.B.	G.L.O. PLAT		
WEATHER	FILE		
COLD	Encana Oil & Gas (USA) INC.		

T3S, R98W, 6th P.M.

S89°20'W - 5493.18' (G.L.O.)

R 98 W  
R 97 W

N01°37'11"W - 2648.90' (Meas.)

N01°38'52"W - 2651.54' (Meas.)

N02°17'W - 2655.84' (G.L.O.)

N02°10'02"W - 2658.04' (Meas.)

1940 Brass Cap  
0.8' High, Pile  
of Stones  
Lat: 39.774453  
Long: 108.351594

1938 Brass Cap  
0.1' High, Pile  
of Stones  
Lat: 39.781908  
Long: 108.332417

1938 Brass Cap  
0.3' High, Pile  
of Stones  
Lat: 39.774642  
Long: 108.332153

1940 Brass Cap  
1.0' High, Mound  
of Stones  
Lat: 39.767167  
Long: 108.351239

1940 Brass Cap  
0.7' High, Mound  
of Stones, Steel Post  
Lat: 39.767283  
Long: 108.341564

COC060749  
COC065568

24

TARGET BOTTOM HOLE  
EUREKA UNIT  
#8815D-24 D30 397

S89°05'52"W - 2720.93' (Meas.)

S89°18'49"W - 2722.54' (Meas.)

1938 Brass Cap  
0.5' High, Pile  
of Stones  
Lat: 39.767369  
Long: 108.331883

LEGEND:

- 90° SYMBOL
- PROPOSED WELL HEAD.
- SECTION CORNERS LOCATED.

Encana Oil & Gas (USA) INC.

Well location, EUREKA UNIT #8815D-24 D30 397 (TARGET BOTTOM HOLE), located as shown in the SW 1/4 SE 1/4 of Section 24, T3S, R98W, 6th P.M., Rio Blanco County, Colorado.

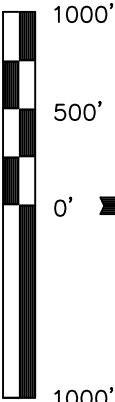
BASIS OF ELEVATION

BENCH MARK (H79) LOCATED IN THE NE 1/4 OF SECTION 35, T4S, R98W, 6th P.M. TAKEN FROM THE BULL FORK QUADRANGLE, COLORADO, 7.5 MINUTE SERIES (TOPO GRAPHICAL MAP) PUBLISHED BY THE UNITED STATES DEPARTMENT OF THE INTERIOR, GEOLOGICAL SURVEY. SAID ELEVATION IS MARKED AS BEING 8535 FEET.

BASIS OF BEARINGS

BASIS OF BEARINGS IS A G.P.S. OBSERVATION.

Sheet 10 of 11



SCALE

CERTIFICATE

THIS IS TO CERTIFY THAT THE ABOVE PLAT WAS PREPARED FROM FIELD NOTES OF ACTUAL SURVEYS MADE BY ME OR UNDER MY SUPERVISION AND THAT THE SAME ARE TRUE AND CORRECT TO THE BEST OF MY KNOWLEDGE AND BELIEF.

REGISTERED LAND SURVEYOR  
REGISTRATION NO. 17492  
STATE OF COLORADO

UNTAR ENGINEERING & LAND SURVEYING

85 SOUTH 200 EAST - VERNAL, UTAH 84078

(435) 789-1017

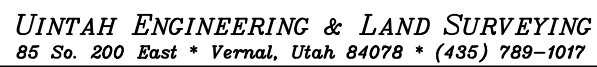
SCALE	DATE SURVEYED:	DATE DRAWN:
1" = 1000'	01-22-09	01-29-09

PARTY	REFERENCES
G.O. B.H. D.R.B.	G.L.O. PLAT
WEATHER	FILE
COLD	Encana Oil & Gas (USA) INC.

60' 30' 0' 30' 60'

SCALE

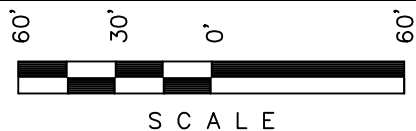
*Sheet 1q of 11*



EnCana OIL & GAS (USA) INC.

WELL PAD INTERFERENCE PLAT

WELL PAD D30 397  
SECTIONS 19 & 30, T3S, R97W, 6th P.M.  
Lot 4 (Sec 19) & Lot 1 (Sec 30)



SCALE

Sheet 2 of 11



SCALE: 1" = 60'  
DATE: 01-28-09  
Drawn By: D.R.B.  
Revised: 07-01-09 D.R.B.

