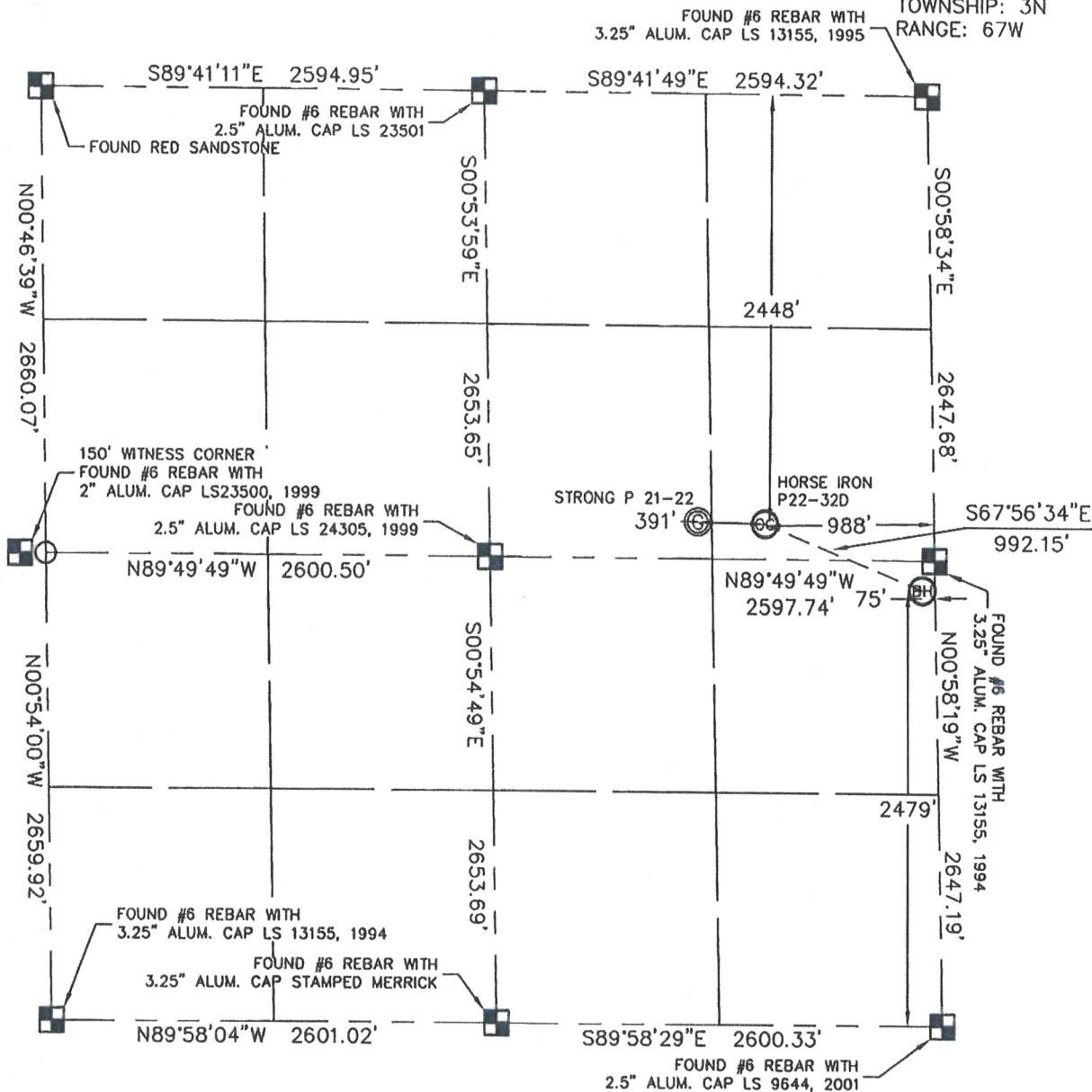


## WELL LOCATION CERTIFICATE

THIS MAP DOES NOT REPRESENT A BOUNDARY SURVEY

SECTION: 21  
TOWNSHIP: 3N  
RANGE: 67WIn accordance with a request from Roger Lowe with Noble Energy Inc.King Surveyors Inc. has determined the surface location of the Horse Iron P22-32D to be 2448' from the North line and 988' from the East line and the bottom hole location to be 2479' from the SOUTH line and 75' from the EAST line as measured at right angles from the section line of Section 21, Township 3 North, Range 67 West of the Sixth Principal Meridian, County of Weld, State of Colorado.I hereby state that this Well Location Certificate was prepared by me, or under my direct supervision, that the fieldwork was completed on 3-5-09, for and on behalf of Noble Energy Inc. That this is not a Land Survey Plat or an Improvement Survey Plat, and that it is not to be relied upon for establishment of fence, building, or other future improvement lines.

## NOTE:

- 1) Bearings shown are Grid Bearings of the Colorado State Plane Coordinate System, North Zone, North American Datum 1983/2007. The lineal dimensions as contained herein are based upon the "U.S. Survey Foot."
- 2) Ground elevations are based on an observed GPS elevation (NAVD 1988 DATUM).
- 3) NEAREST EXISTING WELL: STRONG P21-22 391' WEST
- 4) IMPROVEMENTS: See VISIBLE IMPROVEMENTS exhibit for all visible improvements within 400' of well head.
- 5) SURFACE USE: PASTURE, GRAIN STORAGE, OIL/GAS PRODUCTION EQUIPMENT

## NOTE

According to Colorado law, you must commence any legal action based upon any defect in this W.L.C. within three years after you discover such defect. In no event, may any action based upon any defect in this survey be commenced more than ten years after the date of the certificate shown hereon. (13-80-105 C.R.S.)

## LEGEND



= ALIQUOT MONUMENT AS DESCRIBED



= CALCULATED POSITION

SURFACE LOCATION  
LATITUDE: 40.21179°N  
LONGITUDE: 104.88955°W  
PDOP: 2.4  
ELEV: 4789  
1/4, 1/4: SE1/4NE1/4  
NEAREST PROPERTY LINE: 205' NORTHEAST

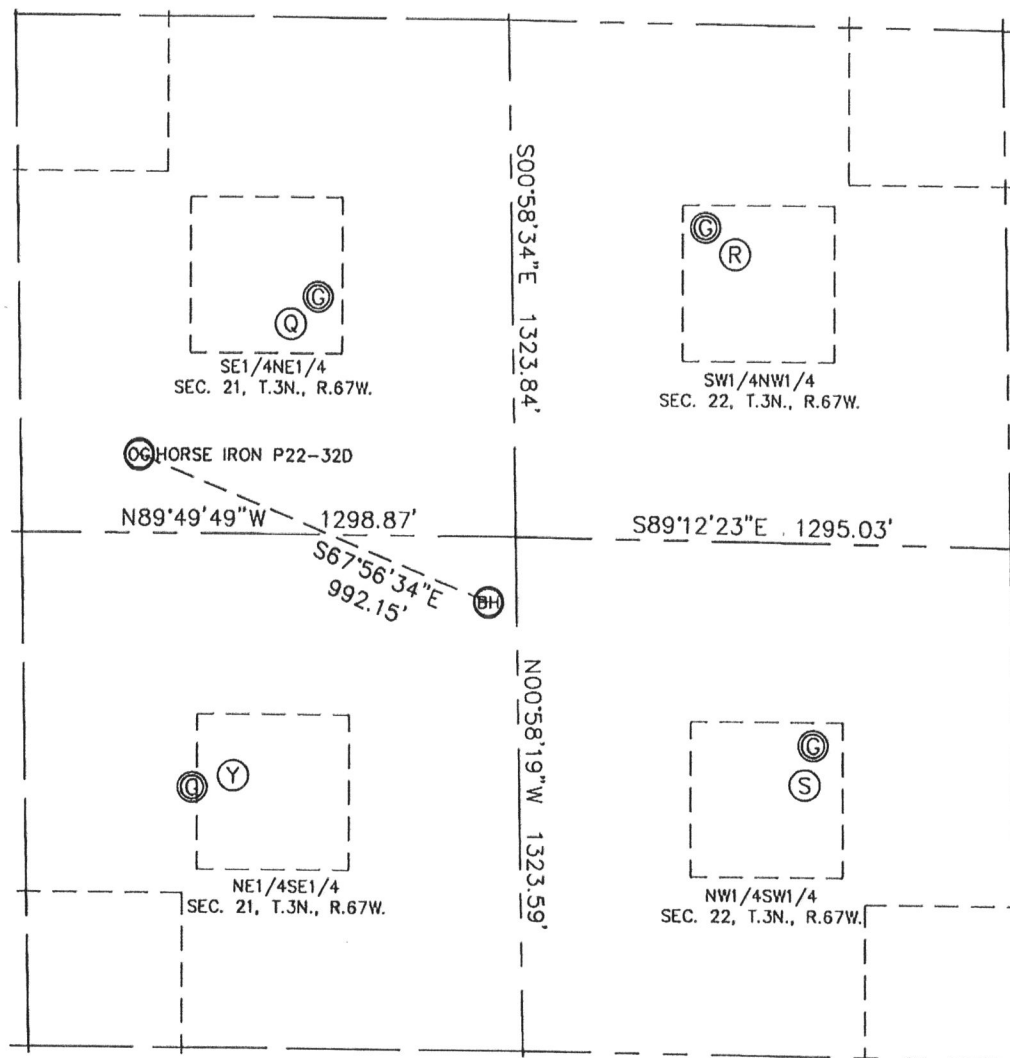
BOTTOM HOLE  
LATITUDE: 40.21075°N  
LONGITUDE: 104.88627°W

Steven A. Lowe 04995  
Licensed Land Surveyor No. 34995  
State of Colorado

PROJECT#: 2009035

KING SURVEYORS, INC. 650 E. GARDEN DR. WINDSOR, CO 80550  
**SITE SKETCH**

SECTION: 21  
 TOWNSHIP: 3N  
 RANGE: 67W



(S)

MAYER 22-12L  
 NW1/4SW1/4  
 2125' FSL  
 772' FWL  
 LAT-40.20975°N  
 LONG-104.88322°W  
 PDOP: 1.7  
 ELEV: 4806

(Q)

STRONG P 21-8  
 SE1/4NE1/4  
 2040' FNL  
 514' FEL  
 LAT-40.21290°N  
 LONG-104.88787°W  
 PDOP: 1.7  
 ELEV: 4789

(R)

HSR-WILLIAM MAYER 5-22A  
 SW1/4NW1/4  
 1847' FNL  
 509' FWL  
 LAT-40.21338°N  
 LONG-104.88421°W  
 PDOP: 2.5  
 ELEV: 4801

(Y)

STRONG P 21-9  
 NE1/4SE1/4  
 1998' FSL  
 862' FEL  
 LAT-40.20945°N  
 LONG-104.88906°W  
 PDOP: 2.0  
 ELEV: 4791

