

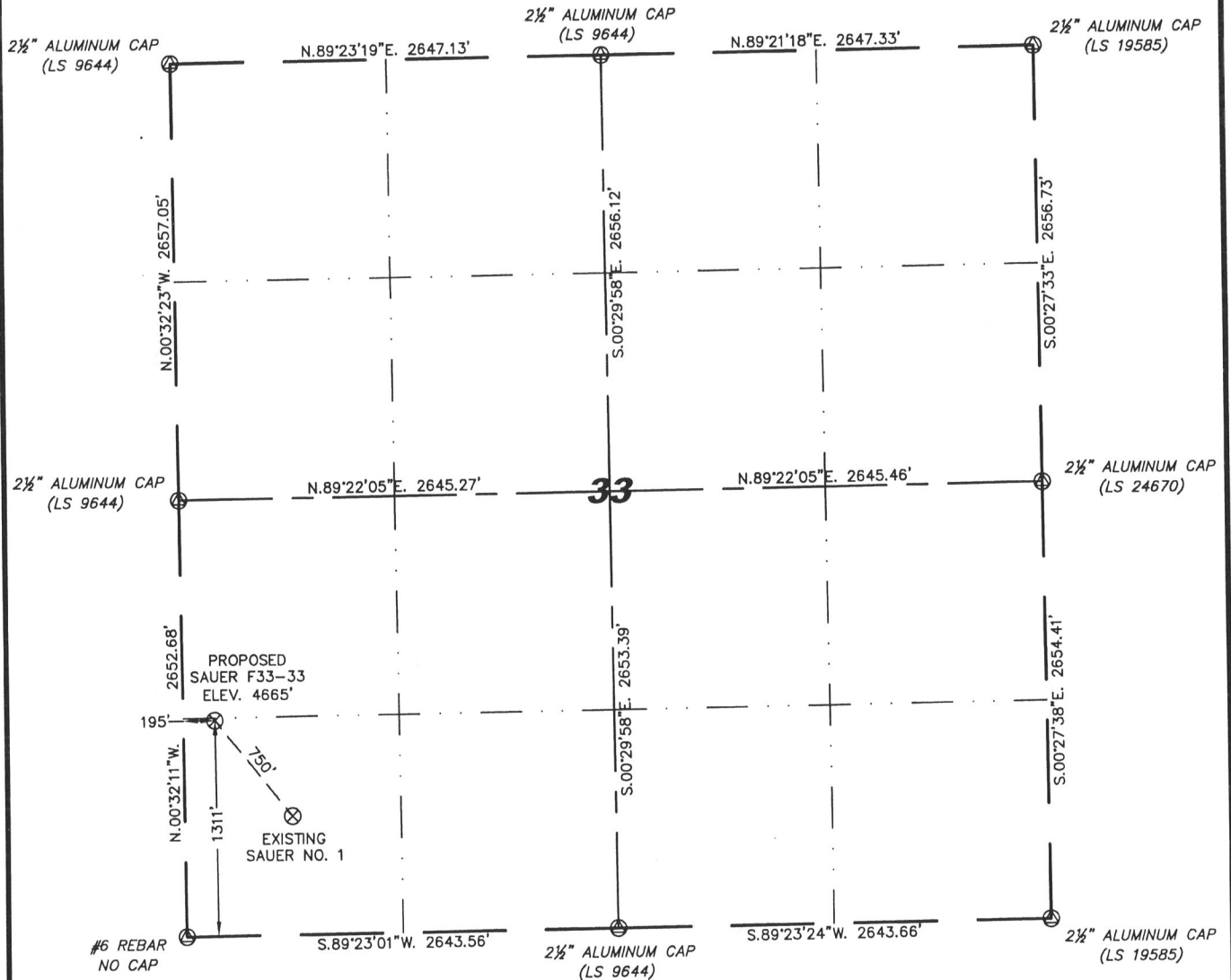
Steil Surveying Services, LLC

1102 West 19th Street P.O. BOX 2073

Cheyenne, Wyoming 82009

WELL LOCATION CERTIFICATE
THIS MAP DOES NOT REPRESENT A BOUNDARY SURVEY

SECTION 33
TOWNSHIP 5 NORTH
RANGE 65 WEST



0 1000

Scale: 1" = 1000'

IN ACCORDANCE WITH A REQUEST FROM BILL BETSON - NOBLE ENERGY INC, STEIL SURVEYING SERVICES, LLC HAS DETERMINED THE LOCATION OF THE SAUER F33-33 WELL TO BE 1311' FSL, 195' FWL, AS MEASURED AT NINETY (90) DEGREES FROM THE SECTION LINES, SECTION 33, TOWNSHIP 5 NORTH, RANGE 65 WEST, 6TH PRINCIPLE MERIDIAN, WELD COUNTY, COLORADO.

I HEREBY CERTIFY THAT THIS WELL LOCATION CERTIFICATE WAS PREPARED BY ME, OR UNDER MY DIRECT SUPERVISION, THAT THE FIELD WORK WAS COMPLETED ON 08/26/2008, FOR AND ON BEHALF OF NOBLE ENERGY INC, THAT IT IS NOT A LAND SURVEY PLAT OR AN IMPROVEMENT SURVEY PLAT, AND THAT IT IS NOT TO BE RELIED UPON FOR ESTABLISHMENT OF FENCE, BUILDING, OR OTHER FUTURE IMPROVEMENT LINES.



NOTES:

- 1) BASIS OF BEARINGS FOR THIS MAP ARE BASED UPON GPS OBSERVATIONS MADE ON 08/25/2008 BETWEEN MONUMENTS LOCATED AT THE SOUTHEAST SECTION CORNER AND THE NORTHEAST SECTION CORNER OF SAID SECTION AND WITH ALL BEARINGS SHOWN HEREON RELATIVE THERETO.
- 2) ELEVATIONS ARE BASED UPON NGS OPUS SOLUTION NAVD 88 DATUM.
- 3) THE NEAREST EXISTING WELL IS: SAUER NO. 1, 750' SOUTHEAST.
- 4) SEE VISIBLE IMPROVEMENTS EXHIBIT FOR ALL IMPROVEMENTS WITHIN 400'.
- 5) THE LOCATION FALLS IN IRRIGATED CROP LAND.

LATITUDE & LONGITUDE (NAD 83 SURFACE HOLE):
 LATITUDE: N 40.35207°
 LONGITUDE: W 104.67716°
 PDOP: 2.0
 QUARTER-QUARTER: SW/4SW/4
 NEAREST PROPERTY LINE: 15' TO THE NORTH AND 195' TO THE WEST

LEGEND

- (A) FOUND SURVEY MONUMENT PER MONUMENT RECORD - EXCEPTIONS NOTED.
- (C) CALCULATED DIMENSION

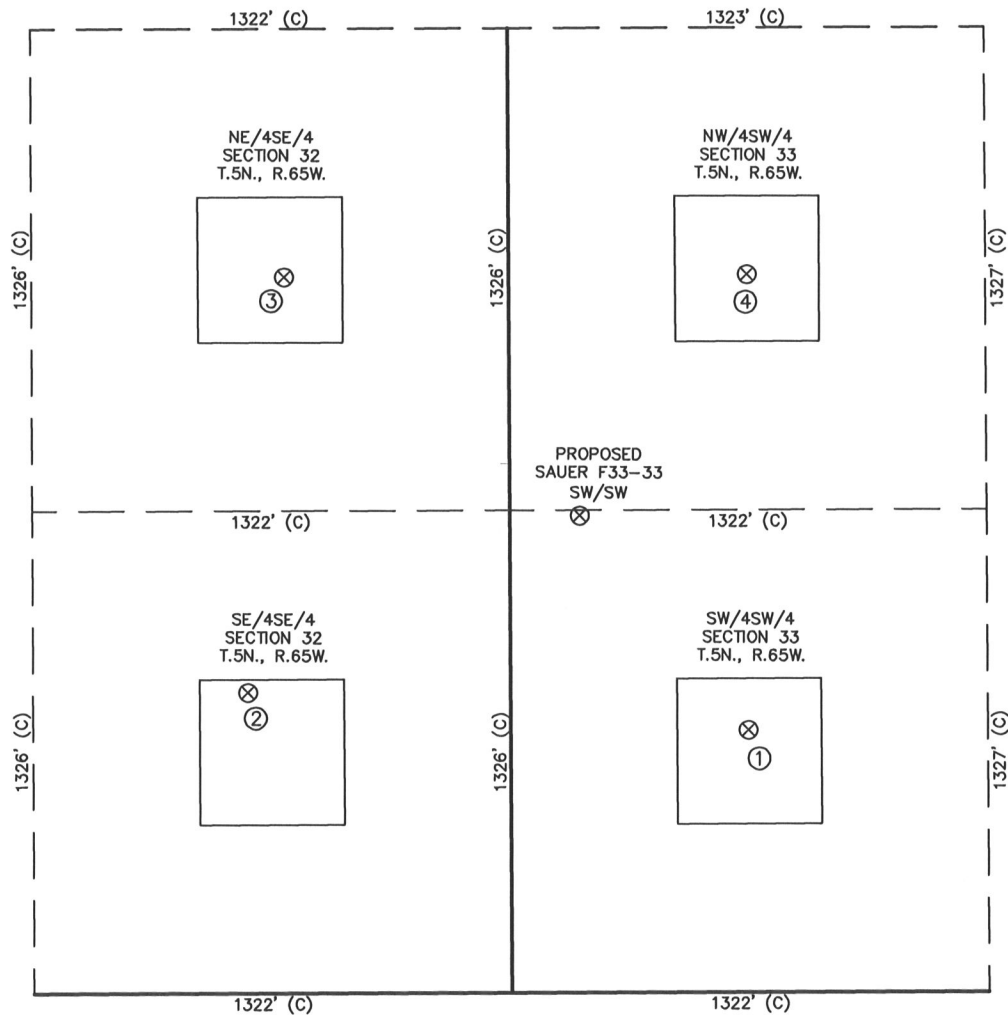
NOTICE: According to Colorado law you MUST commence any legal action based upon any defect in this W.L.C. within three years after you first discover such defect. In no event may any action based upon any defect in this W.L.C. be commenced more than ten years from this sold date of the certification shown hereon.

Completed 05/12/2009
 David C. Holmes
 Professional Land Surveyor Registration No. 32828
 State of Colorado

JOB #: 08086

SITE SKETCH – SAUER F33-33

SECTION 33
TOWNSHIP 5 NORTH
RANGE 65 WEST



①	②	③	④
SAUER NO. 1	STROHAUER	BOSTRON	KEISER NO. 2
SW/SW SEC. 33	NO. 32-1	NO. 2	NW/SW SEC. 33
721' FSL	SE/SE SEC. 32	NE/SE SEC. 32	1974' FSL
659' FWL	824' FSL	1967' FSL	661' FWL
EL 4669'	727' FEL	622' FEL	EL 4663'
N 40.35045	EL 4668'	EL 4667'	N 40.35389
W 104.67549	N 40.35074	N 40.35388	W 104.67548
PDOP 2.2	W 104.68046	W 104.68009	PDOP 2.8
	PDOP 2.3	PDOP 2.3	

NOTES:

- 1) THIS SKETCH DOES NOT REPRESENT A BOUNDARY SURVEY.
- 2) THE DATUM FOR THE LATITUDES AND LONGITUDES ON THIS SKETCH IS NAD83.



Scale: 1" = 500'