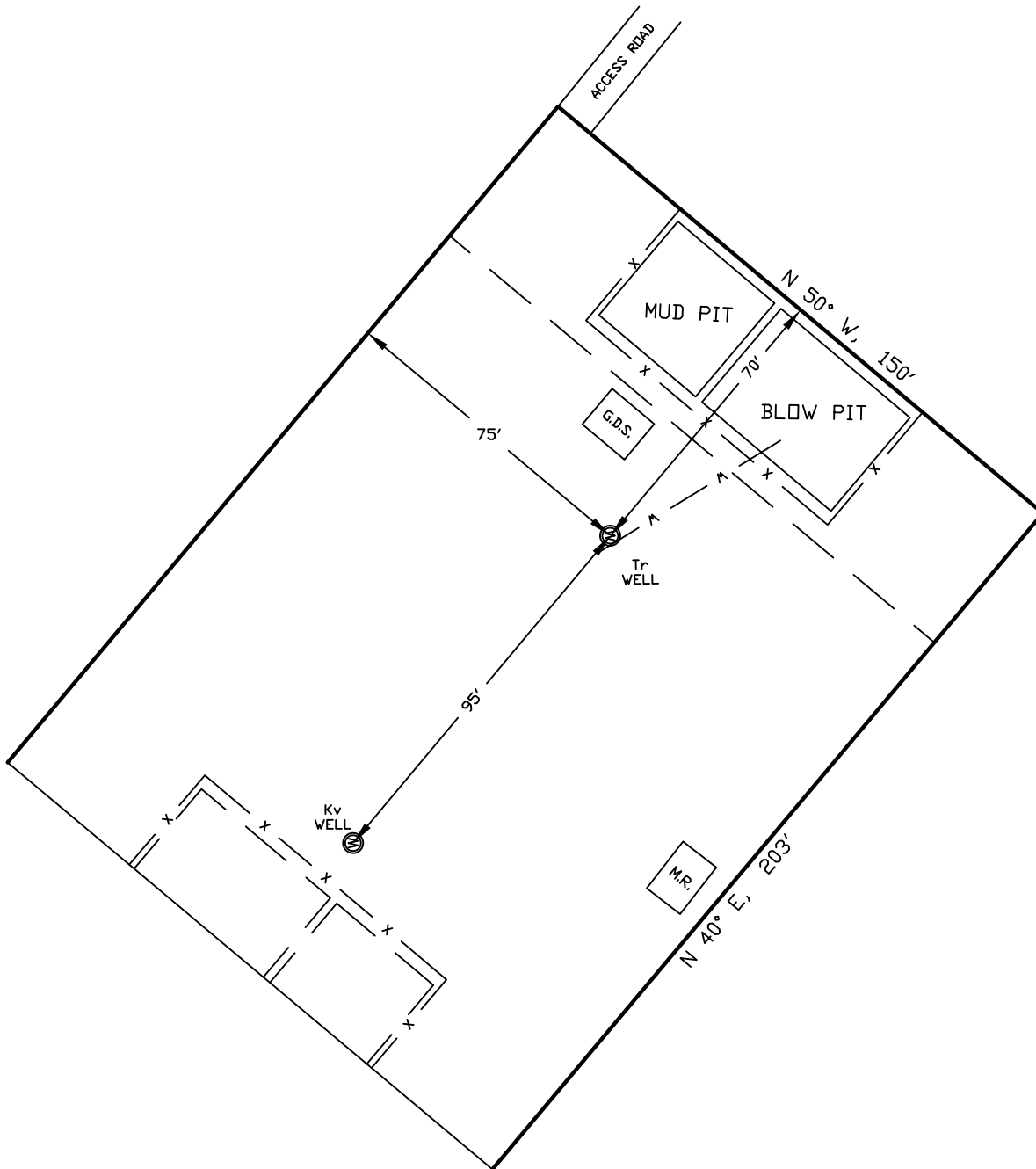


WELLSITE/PRODUCTION EQUIPMENT LAYOUT

OPERATOR: Pioneer Natural Resources

WELL NAME: Mad City 21-25 Tr

NENW of SECTION 25 TOWNSHIP 33 S, RANGE 67 W OF THE 6TH P.M., IN LAS ANIMAS COUNTY



NOTE:

MUD AND BLOW PITS WILL BE CONVERTED TO UNLINED EVAPORATION PITS FOR PRODUCTION.

WELLHEADS ARE TYPICALLY PCP DRIVE HEADS


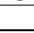

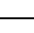

GRAPHIC SCALE



(IN FEET)

1 inch = 40 ft.

LEGEND:

-  = WELLHEAD
-  = EXISTING WELLPAD
-  = FENCE (4 STRAND)
-  = 4" GAS GATHERING LINE
-  = 2" WATER LINE
- M.R. = COMBO METER RUN AND WATER/GAS SEPARATOR
- G.D.S. = GAS DRIVE SYSTEM

April 20, 2009

Date Platted

SHIELDS SURVEY L^{td}. C^o.
Raton, New Mexico 87740
(575)445-1232