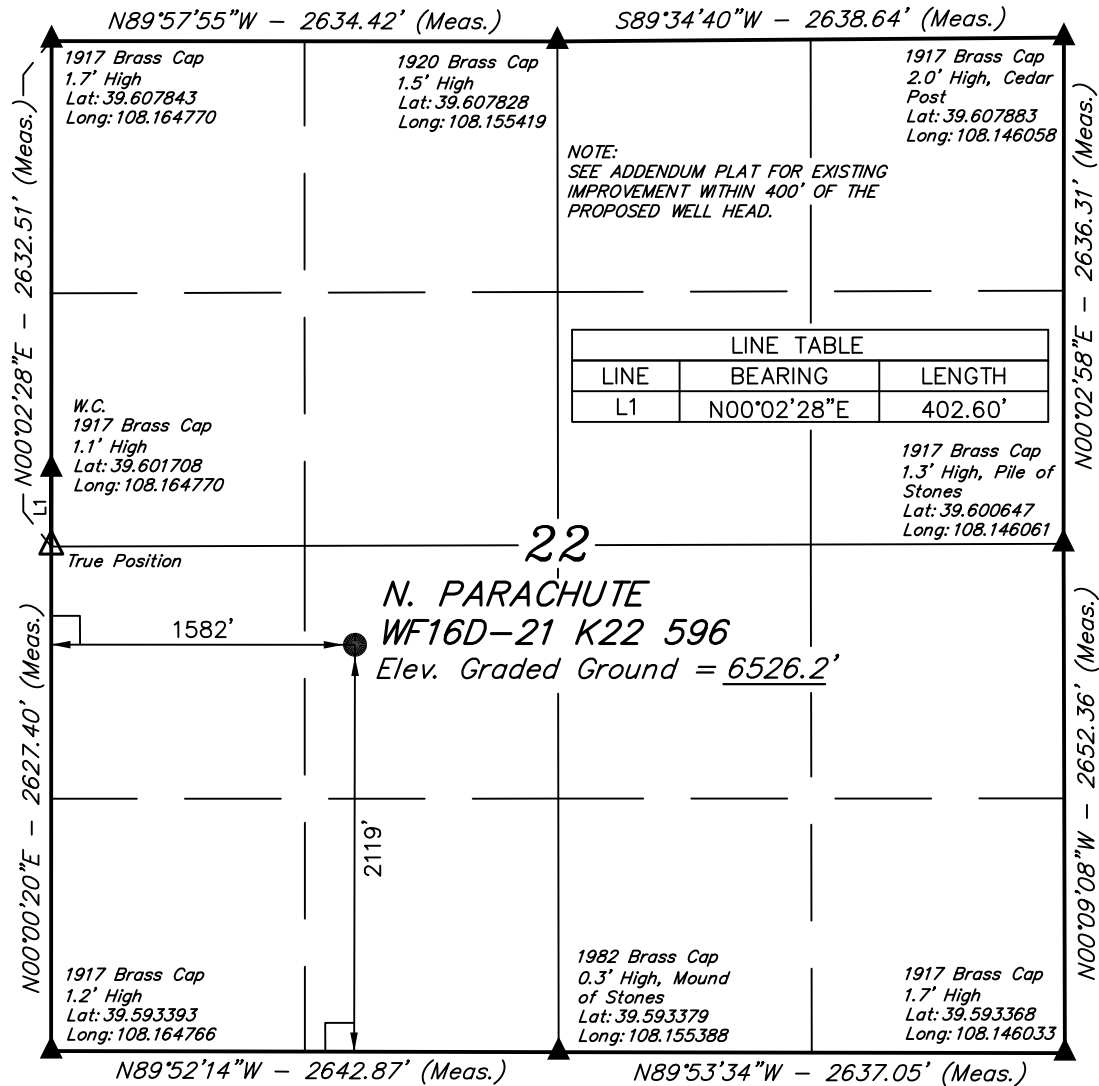


# T5S, R96W, 6th P.M.

## EnCana OIL & GAS (USA) INC.

Well location, N. PARACHUTE WF16D-21 K22 596 (SURFACE LOCATION), located as shown in the NE 1/4 SW 1/4 of Section 22, T5S, R96W, 6th P.M., Garfield County, Colorado.



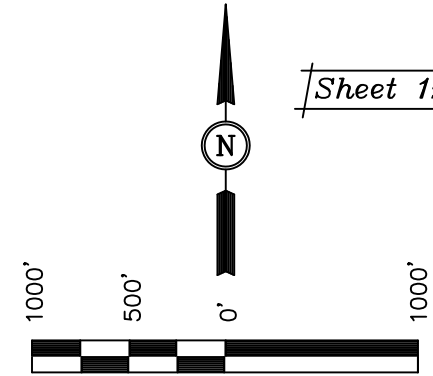
### BASIS OF ELEVATION

SPOT ELEVATION AT THE NORTHWEST CORNER OF SECTION 30, T5S, R95W, 6th P.M. TAKEN FROM THE FORKED GULCH QUADRANGLE, COLORADO, GARFIELD COUNTY, 7.5 MINUTE SERIES (TOPOGRAPHICAL MAP) PUBLISHED BY THE UNITED STATES DEPARTMENT OF THE INTERIOR, GEOLOGICAL SURVEY. SAID ELEVATION IS MARKED AS BEING 5966 FEET.

### BASIS OF BEARINGS

BASIS OF BEARINGS IS A G.P.S. OBSERVATION.

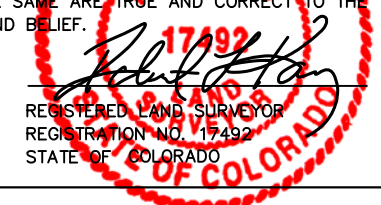
Sheet 1zz of 11



SCALE

### CERTIFICATE

THIS IS TO CERTIFY THAT THE ABOVE PLAT WAS PREPARED FROM FIELD NOTES OF ACTUAL SURVEYS MADE BY ME OR UNDER MY SUPERVISION AND THAT THE SAME ARE TRUE AND CORRECT TO THE BEST OF MY KNOWLEDGE AND BELIEF.



### LEGEND:

- └─┘ = 90° SYMBOL
- = PROPOSED WELL HEAD.
- ▲ = SECTION CORNERS LOCATED.

NOTE:  
THE PROPOSED BOTTOM HOLE FOR THIS WELL IS LOCATED IN THE SE 1/4 SE 1/4 OF SECTION 21, T5S, R96W, 6th P.M. AT A DISTANCE OF 262' FSL 731' FEL. IT BEARS S51°17'25"W 2964.46' FROM THE PROPOSED WELL HEAD.

PDOP = 2.1

NAD 83 (SURFACE LOCATION)
LATITUDE = 39°35'57.12" (39.599200)
LONGITUDE = 108°09'32.95" (108.159153)
NAD 27 (SURFACE LOCATION)
LATITUDE = 39°35'57.21" (39.599225)
LONGITUDE = 108°09'30.66" (108.158517)

UINTAH ENGINEERING & LAND SURVEYING			
85 SOUTH 200 EAST - VERNAL, UTAH 84078			
(435) 789-1017			
SCALE	DATE SURVEYED:	DATE DRAWN:	
1" = 1000'	10-31-08	04-15-09	
PARTY	REFERENCES		
B.D. J.L. D.R.B.	G.L.O. PLAT		
WEATHER	FILE		
COLD	EnCana OIL & GAS (USA) INC.		

# T5S, R96W, 6th P.M.

## EnCana OIL & GAS (USA) INC.

Well location, N. PARACHUTE WF16D-21 K22 596 (TARGET BOTTOM HOLE), located as shown in the SE 1/4 SE 1/4 of Section 21, T5S, R96W, 6th P.M., Garfield County, Colorado.

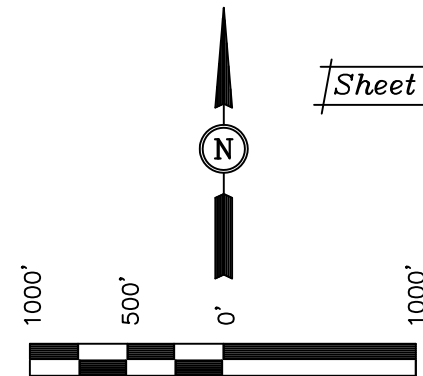
### BASIS OF ELEVATION

SPOT ELEVATION AT THE NORTHWEST CORNER OF SECTION 30, T5S, R95W, 6th P.M. TAKEN FROM THE FORKED GULCH QUADRANGLE, COLORADO, GARFIELD COUNTY, 7.5 MINUTE SERIES (TOPOGRAPHICAL MAP) PUBLISHED BY THE UNITED STATES DEPARTMENT OF THE INTERIOR, GEOLOGICAL SURVEY. SAID ELEVATION IS MARKED AS BEING 5966 FEET.

### BASIS OF BEARINGS

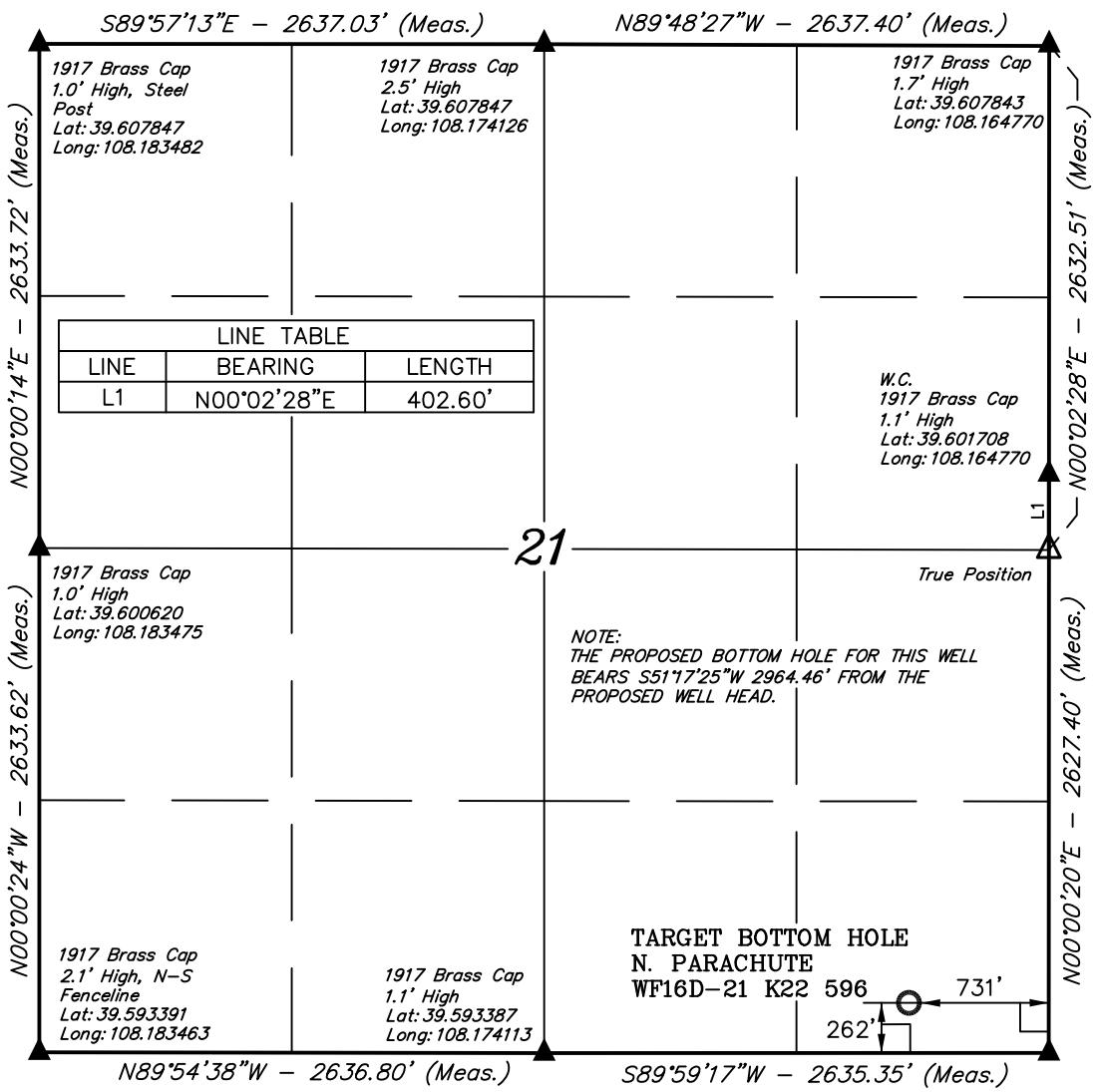
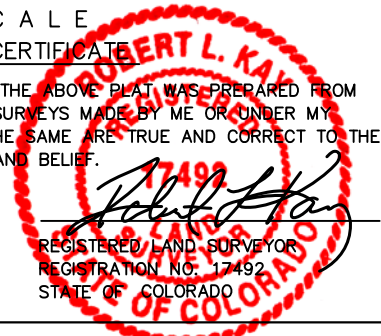
BASIS OF BEARINGS IS A G.P.S. OBSERVATION.

Sheet 1aaa of 11



SCALE  
CERTIFICATE

THIS IS TO CERTIFY THAT THE ABOVE PLAT WAS PREPARED FROM FIELD NOTES OF ACTUAL SURVEYS MADE BY ME OR UNDER MY SUPERVISION AND THAT THE SAME ARE TRUE AND CORRECT TO THE BEST OF MY KNOWLEDGE AND BELIEF.



NOTE:  
THE PROPOSED BOTTOM HOLE FOR THIS WELL BEARS S51°17'25\"/>

TARGET BOTTOM HOLE  
N. PARACHUTE  
WF16D-21 K22 596  
731'  
262'

NAD 83 (TARGET BOTTOM HOLE)	
LATITUDE	= 39°35'38.79\"/>
LONGITUDE	= 108°10'02.48\"/>
NAD 27 (TARGET BOTTOM HOLE)	
LATITUDE	= 39°35'38.87\"/>
LONGITUDE	= 108°10'00.19\"/>

### LEGEND:

- └─┘ = 90° SYMBOL
- = PROPOSED WELL HEAD.
- ▲ = SECTION CORNERS LOCATED.

UTAH ENGINEERING & LAND SURVEYING 85 SOUTH 200 EAST - VERNAL, UTAH 84078 (435) 789-1017		
SCALE 1" = 1000'	DATE SURVEYED: 10-31-08	DATE DRAWN: 04-15-09
PARTY B.D. J.L. D.R.B.	REFERENCES G.L.O. PLAT	
WEATHER COLD	FILE EnCana OIL & GAS (USA) INC.	