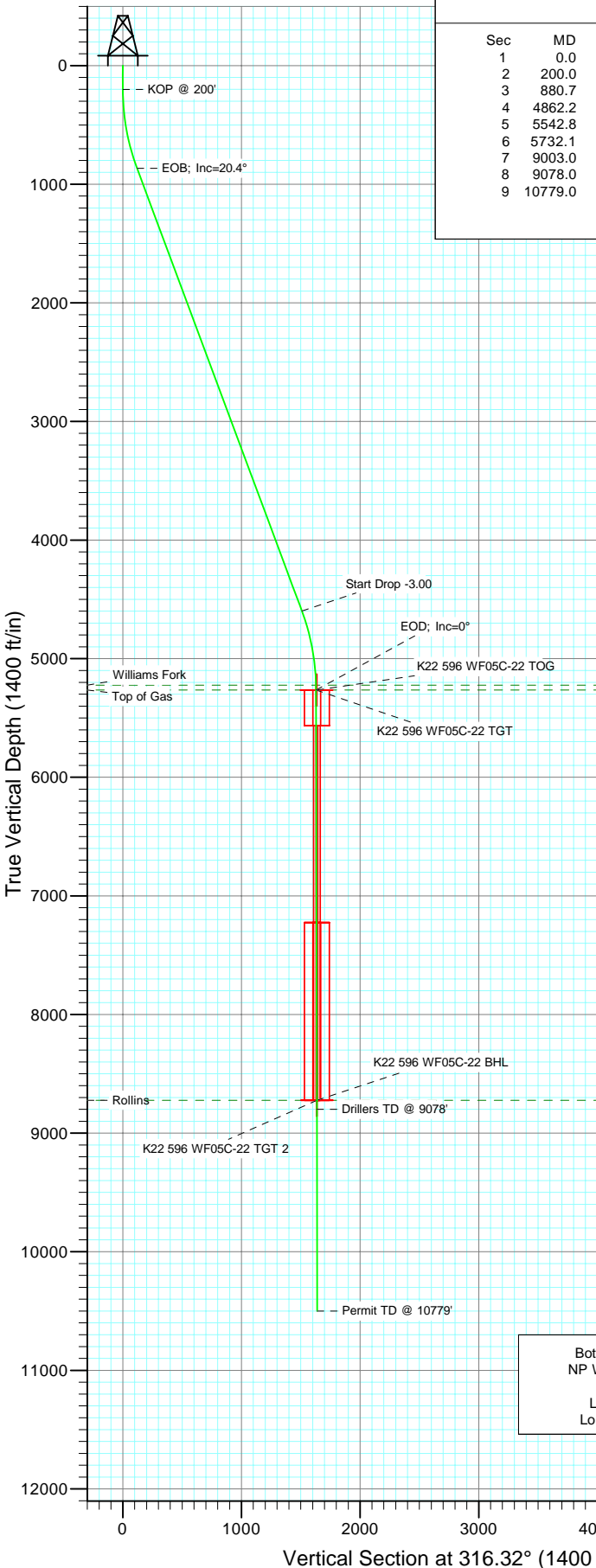
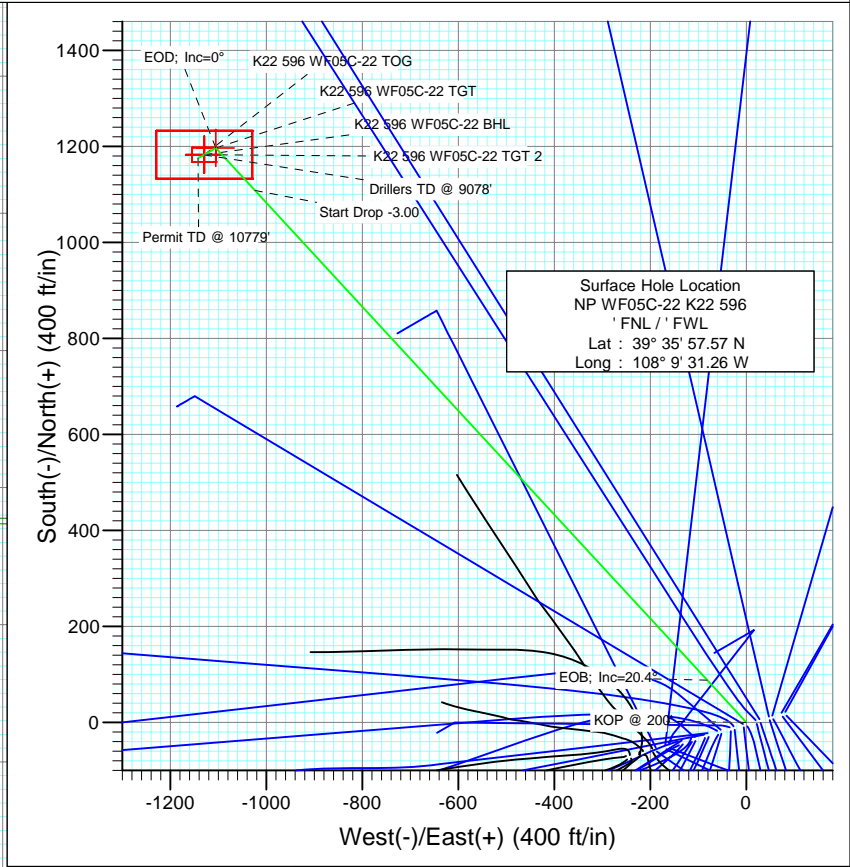




Project: North Piceance
 Site: K22 596 Pad (S22-T5S-R96W)
 Well: NP WF05C-22 K22 596
 Wellbore: DD
 Design: Plan #1



SECTION DETAILS										
Sec	MD	Inc	Azi	TVD	+N/-S	+E/-W	DLeg	TFace	VSec	Target
1	0.0	0.00	0.00	0.0	0.0	0.0	0.00	0.00	0.0	
2	200.0	0.00	0.00	200.0	0.0	0.0	0.00	0.00	0.0	
3	880.7	20.42	317.27	866.4	88.2	-81.4	3.00	317.27	120.0	
4	4862.2	20.42	317.27	4597.6	1108.6	-1024.0	0.00	0.00	1509.0	
5	5542.8	0.00	0.00	5264.0	1196.8	-1105.4	3.00	180.00	1629.0	K22 596 WF05C-22 TGT
6	5732.1	0.47	239.87	5453.3	1196.4	-1106.1	0.25	239.87	1629.1	
7	9003.0	0.47	239.87	8724.0	1182.8	-1129.4	0.00	0.00	1635.5	K22 596 WF05C-22 BHL
8	9078.0	0.47	239.87	8799.0	1182.5	-1130.0	0.00	0.00	1635.6	
9	10779.0	0.47	239.87	10500.0	1175.5	-1142.1	0.00	0.00	1638.9	



FORMATION TOP DETAILS		
TVDPath	MDPath	Formation
5224.0	5502.8	Williams Fork
5264.0	5542.8	Top of Gas
8724.0	9003.0	Rollins

Azimuths to True North
Magnetic North: 10.74°

Magnetic Field
Strength: 52556.5snT
Dip Angle: 65.87°
Date: 12/17/2008
Model: IGRF200510

DESIGN DETAILS: Plan #1

85xxx; LR
WF05C-22 K22 596 @ 6546.0ft (Original Well Elev)

Target	Azimuth	Origin	N/S	E/W From TVD
K22 596 WF05C-22 BHL	316.32	Slot	0.0	0.0

Bottom Hole Location
 NP WF05C-22 K22 596
 ' FSL / ' FWL
 Lat : 39 36 9.26
 Long. : 108 9 45.69

Cathedral Energy Services

Planning Report

Database: EDM 2003.21 US Multi Users DB	Local Co-ordinate Reference: Well NP WF05C-22 K22 596
Company: EnCana Oil & Gas (USA) Inc	TVD Reference: WF05C-22 K22 596 @ 6546.0ft (Original Well Elev)
Project: North Piceance	MD Reference: WF05C-22 K22 596 @ 6546.0ft (Original Well Elev)
Site: K22 596 Pad (S22-T5S-R96W)	North Reference: True
Well: NP WF05C-22 K22 596	Survey Calculation Method: Minimum Curvature
Wellbore: DD	
Design: Plan #1	

Project North Piceance		
Map System: US State Plane 1983	System Datum: Mean Sea Level	
Geo Datum: North American Datum 1983		
Map Zone: Colorado Central Zone		

Site K22 596 Pad (S22-T5S-R96W)					
Site Position:		Northing:	1,654,096.85 ft	Latitude:	39° 35' 57.02 N
From: Lat/Long		Easting:	2,250,762.90 ft	Longitude:	108° 9' 33.39 W
Position Uncertainty:	0.0 ft	Slot Radius:	0.000 in	Grid Convergence:	-1.68 °

Well NP WF05C-22 K22 596					
Well Position	+N/-S	0.0 ft	Northing:	1,654,147.67 ft	Latitude: 39° 35' 57.57 N
	+E/-W	0.0 ft	Easting:	2,250,931.19 ft	Longitude: 108° 9' 31.26 W
Position Uncertainty		0.0 ft	Wellhead Elevation:	ft	Ground Level: 6,524.0 ft

Wellbore DD					
Magnetics	Model Name	Sample Date	Declination	Dip Angle	Field Strength
	IGRF200510	12/17/2008	(°)	(°)	(nT)
			10.74	65.87	52,556

Design Plan #1				
Audit Notes:				
Version:	Phase:	PLAN	Tie On Depth:	0.0
Vertical Section:	Depth From (TVD)	+N/-S	+E/-W	Direction
	(ft)	(ft)	(ft)	(°)
	0.0	0.0	0.0	316.32

Plan Sections										
Measured Depth (ft)	Inclination (°)	Azimuth (°)	Vertical Depth (ft)	+N/-S (ft)	+E/-W (ft)	Dogleg Rate (°/100ft)	Build Rate (°/100ft)	Turn Rate (°/100ft)	TFO (°)	Target
0.0	0.00	0.00	0.0	0.0	0.0	0.00	0.00	0.00	0.00	
200.0	0.00	0.00	200.0	0.0	0.0	0.00	0.00	0.00	0.00	
880.7	20.42	317.27	866.4	88.2	-81.4	3.00	3.00	0.00	317.27	
4,862.2	20.42	317.27	4,597.6	1,108.6	-1,024.0	0.00	0.00	0.00	0.00	
5,542.8	0.00	0.00	5,264.0	1,196.8	-1,105.4	3.00	-3.00	0.00	180.00	K22 596 WF05C-22 T
5,732.1	0.47	239.87	5,453.3	1,196.4	-1,106.1	0.25	0.25	-63.46	239.87	
9,003.0	0.47	239.87	8,724.0	1,182.8	-1,129.4	0.00	0.00	0.00	0.00	K22 596 WF05C-22 E
9,078.0	0.47	239.87	8,799.0	1,182.5	-1,130.0	0.00	0.00	0.00	0.00	
10,779.0	0.47	239.87	10,500.0	1,175.5	-1,142.1	0.00	0.00	0.00	0.00	

Cathedral Energy Services

Planning Report

Database:	EDM 2003.21 US Multi Users DB	Local Co-ordinate Reference:	Well NP WF05C-22 K22 596
Company:	EnCana Oil & Gas (USA) Inc	TVD Reference:	WF05C-22 K22 596 @ 6546.0ft (Original Well Elev)
Project:	North Piceance	MD Reference:	WF05C-22 K22 596 @ 6546.0ft (Original Well Elev)
Site:	K22 596 Pad (S22-T5S-R96W)	North Reference:	True
Well:	NP WF05C-22 K22 596	Survey Calculation Method:	Minimum Curvature
Wellbore:	DD		
Design:	Plan #1		

Planned Survey

Measured Depth (ft)	Inclination (°)	Azimuth (°)	Vertical Depth (ft)	+N/-S (ft)	+E/-W (ft)	Vertical Section (ft)	Dogleg Rate (°/100ft)	Build Rate (°/100ft)	Comments / Formations
0.0	0.00	0.00	0.0	0.0	0.0	0.0	0.00	0.00	
30.0	0.00	0.00	30.0	0.0	0.0	0.0	0.00	0.00	
60.0	0.00	0.00	60.0	0.0	0.0	0.0	0.00	0.00	
90.0	0.00	0.00	90.0	0.0	0.0	0.0	0.00	0.00	
120.0	0.00	0.00	120.0	0.0	0.0	0.0	0.00	0.00	
150.0	0.00	0.00	150.0	0.0	0.0	0.0	0.00	0.00	
180.0	0.00	0.00	180.0	0.0	0.0	0.0	0.00	0.00	
200.0	0.00	0.00	200.0	0.0	0.0	0.0	0.00	0.00	KOP @ 200'
210.0	0.30	317.27	210.0	0.0	0.0	0.0	3.00	3.00	
240.0	1.20	317.27	240.0	0.3	-0.3	0.4	3.00	3.00	
270.0	2.10	317.27	270.0	0.9	-0.9	1.3	3.00	3.00	
300.0	3.00	317.27	300.0	1.9	-1.8	2.6	3.00	3.00	
330.0	3.90	317.27	329.9	3.2	-3.0	4.4	3.00	3.00	
360.0	4.80	317.27	359.8	4.9	-4.5	6.7	3.00	3.00	
390.0	5.70	317.27	389.7	6.9	-6.4	9.4	3.00	3.00	
420.0	6.60	317.27	419.5	9.3	-8.6	12.7	3.00	3.00	
450.0	7.50	317.27	449.3	12.0	-11.1	16.3	3.00	3.00	
480.0	8.40	317.27	479.0	15.1	-13.9	20.5	3.00	3.00	
510.0	9.30	317.27	508.6	18.4	-17.0	25.1	3.00	3.00	
540.0	10.20	317.27	538.2	22.2	-20.5	30.2	3.00	3.00	
570.0	11.10	317.27	567.7	26.2	-24.2	35.7	3.00	3.00	
600.0	12.00	317.27	597.1	30.7	-28.3	41.7	3.00	3.00	
630.0	12.90	317.27	626.4	35.4	-32.7	48.2	3.00	3.00	
660.0	13.80	317.27	655.6	40.5	-37.4	55.1	3.00	3.00	
690.0	14.70	317.27	684.6	45.9	-42.4	62.5	3.00	3.00	
720.0	15.60	317.27	713.6	51.7	-47.7	70.3	3.00	3.00	
750.0	16.50	317.27	742.4	57.8	-53.4	78.6	3.00	3.00	
780.0	17.40	317.27	771.1	64.2	-59.3	87.4	3.00	3.00	
810.0	18.30	317.27	799.7	71.0	-65.5	96.6	3.00	3.00	
840.0	19.20	317.27	828.1	78.0	-72.1	106.2	3.00	3.00	
870.0	20.10	317.27	856.3	85.4	-78.9	116.3	3.00	3.00	
880.7	20.42	317.27	866.4	88.2	-81.4	120.0	3.00	3.00	EOB; Inc=20.4°
900.0	20.42	317.27	884.5	93.1	-86.0	126.7	0.00	0.00	
930.0	20.42	317.27	912.6	100.8	-93.1	137.2	0.00	0.00	
960.0	20.42	317.27	940.7	108.5	-100.2	147.7	0.00	0.00	
990.0	20.42	317.27	968.8	116.2	-107.3	158.1	0.00	0.00	
1,020.0	20.42	317.27	996.9	123.9	-114.4	168.6	0.00	0.00	
1,050.0	20.42	317.27	1,025.0	131.6	-121.5	179.1	0.00	0.00	
1,080.0	20.42	317.27	1,053.2	139.3	-128.6	189.5	0.00	0.00	
1,110.0	20.42	317.27	1,081.3	146.9	-135.7	200.0	0.00	0.00	
1,140.0	20.42	317.27	1,109.4	154.6	-142.8	210.5	0.00	0.00	
1,170.0	20.42	317.27	1,137.5	162.3	-149.9	220.9	0.00	0.00	
1,200.0	20.42	317.27	1,165.6	170.0	-157.0	231.4	0.00	0.00	
1,230.0	20.42	317.27	1,193.7	177.7	-164.1	241.9	0.00	0.00	
1,260.0	20.42	317.27	1,221.8	185.4	-171.2	252.3	0.00	0.00	
1,290.0	20.42	317.27	1,250.0	193.1	-178.3	262.8	0.00	0.00	
1,320.0	20.42	317.27	1,278.1	200.8	-185.4	273.3	0.00	0.00	
1,350.0	20.42	317.27	1,306.2	208.5	-192.5	283.7	0.00	0.00	
1,380.0	20.42	317.27	1,334.3	216.1	-199.6	294.2	0.00	0.00	
1,410.0	20.42	317.27	1,362.4	223.8	-206.7	304.7	0.00	0.00	
1,440.0	20.42	317.27	1,390.5	231.5	-213.8	315.1	0.00	0.00	
1,470.0	20.42	317.27	1,418.6	239.2	-220.9	325.6	0.00	0.00	

Cathedral Energy Services

Planning Report

Database:	EDM 2003.21 US Multi Users DB	Local Co-ordinate Reference:	Well NP WF05C-22 K22 596
Company:	EnCana Oil & Gas (USA) Inc	TVD Reference:	WF05C-22 K22 596 @ 6546.0ft (Original Well Elev)
Project:	North Piceance	MD Reference:	WF05C-22 K22 596 @ 6546.0ft (Original Well Elev)
Site:	K22 596 Pad (S22-T5S-R96W)	North Reference:	True
Well:	NP WF05C-22 K22 596	Survey Calculation Method:	Minimum Curvature
Wellbore:	DD		
Design:	Plan #1		

Planned Survey									
Measured Depth (ft)	Inclination (°)	Azimuth (°)	Vertical Depth (ft)	+N/-S (ft)	+E/-W (ft)	Vertical Section (ft)	Dogleg Rate (°/100ft)	Build Rate (°/100ft)	Comments / Formations
1,500.0	20.42	317.27	1,446.8	246.9	-228.0	336.1	0.00	0.00	
1,530.0	20.42	317.27	1,474.9	254.6	-235.1	346.5	0.00	0.00	
1,560.0	20.42	317.27	1,503.0	262.3	-242.2	357.0	0.00	0.00	
1,590.0	20.42	317.27	1,531.1	270.0	-249.4	367.5	0.00	0.00	
1,620.0	20.42	317.27	1,559.2	277.7	-256.5	377.9	0.00	0.00	
1,650.0	20.42	317.27	1,587.3	285.3	-263.6	388.4	0.00	0.00	
1,680.0	20.42	317.27	1,615.5	293.0	-270.7	398.8	0.00	0.00	
1,710.0	20.42	317.27	1,643.6	300.7	-277.8	409.3	0.00	0.00	
1,740.0	20.42	317.27	1,671.7	308.4	-284.9	419.8	0.00	0.00	
1,770.0	20.42	317.27	1,699.8	316.1	-292.0	430.2	0.00	0.00	
1,800.0	20.42	317.27	1,727.9	323.8	-299.1	440.7	0.00	0.00	
1,830.0	20.42	317.27	1,756.0	331.5	-306.2	451.2	0.00	0.00	
1,860.0	20.42	317.27	1,784.1	339.2	-313.3	461.6	0.00	0.00	
1,890.0	20.42	317.27	1,812.3	346.9	-320.4	472.1	0.00	0.00	
1,920.0	20.42	317.27	1,840.4	354.5	-327.5	482.6	0.00	0.00	
1,950.0	20.42	317.27	1,868.5	362.2	-334.6	493.0	0.00	0.00	
1,980.0	20.42	317.27	1,896.6	369.9	-341.7	503.5	0.00	0.00	
2,010.0	20.42	317.27	1,924.7	377.6	-348.8	514.0	0.00	0.00	
2,040.0	20.42	317.27	1,952.8	385.3	-355.9	524.4	0.00	0.00	
2,070.0	20.42	317.27	1,980.9	393.0	-363.0	534.9	0.00	0.00	
2,100.0	20.42	317.27	2,009.1	400.7	-370.1	545.4	0.00	0.00	
2,130.0	20.42	317.27	2,037.2	408.4	-377.2	555.8	0.00	0.00	
2,160.0	20.42	317.27	2,065.3	416.1	-384.3	566.3	0.00	0.00	
2,190.0	20.42	317.27	2,093.4	423.8	-391.4	576.8	0.00	0.00	
2,220.0	20.42	317.27	2,121.5	431.4	-398.5	587.2	0.00	0.00	
2,250.0	20.42	317.27	2,149.6	439.1	-405.6	597.7	0.00	0.00	
2,280.0	20.42	317.27	2,177.7	446.8	-412.7	608.2	0.00	0.00	
2,310.0	20.42	317.27	2,205.9	454.5	-419.8	618.6	0.00	0.00	
2,340.0	20.42	317.27	2,234.0	462.2	-426.9	629.1	0.00	0.00	
2,370.0	20.42	317.27	2,262.1	469.9	-434.0	639.6	0.00	0.00	
2,400.0	20.42	317.27	2,290.2	477.6	-441.1	650.0	0.00	0.00	
2,430.0	20.42	317.27	2,318.3	485.3	-448.2	660.5	0.00	0.00	
2,460.0	20.42	317.27	2,346.4	493.0	-455.3	671.0	0.00	0.00	
2,490.0	20.42	317.27	2,374.6	500.6	-462.4	681.4	0.00	0.00	

Cathedral Energy Services

Planning Report

Database:	EDM 2003.21 US Multi Users DB	Local Co-ordinate Reference:	Well NP WF05C-22 K22 596
Company:	EnCana Oil & Gas (USA) Inc	TVD Reference:	WF05C-22 K22 596 @ 6546.0ft (Original Well Elev)
Project:	North Piceance	MD Reference:	WF05C-22 K22 596 @ 6546.0ft (Original Well Elev)
Site:	K22 596 Pad (S22-T5S-R96W)	North Reference:	True
Well:	NP WF05C-22 K22 596	Survey Calculation Method:	Minimum Curvature
Wellbore:	DD		
Design:	Plan #1		

Planned Survey									
Measured Depth (ft)	Inclination (°)	Azimuth (°)	Vertical Depth (ft)	+N/-S (ft)	+E/-W (ft)	Vertical Section (ft)	Dogleg Rate (°/100ft)	Build Rate (°/100ft)	Comments / Formations
2,500.0	20.42	317.27	2,383.9	503.2	-464.8	684.9	0.00	0.00	
2,600.0	20.42	317.27	2,477.6	528.8	-488.4	719.8	0.00	0.00	
2,700.0	20.42	317.27	2,571.4	554.5	-512.1	754.7	0.00	0.00	
2,800.0	20.42	317.27	2,665.1	580.1	-535.8	789.6	0.00	0.00	
2,900.0	20.42	317.27	2,758.8	605.7	-559.5	824.5	0.00	0.00	
3,000.0	20.42	317.27	2,852.5	631.4	-583.1	859.3	0.00	0.00	
3,100.0	20.42	317.27	2,946.2	657.0	-606.8	894.2	0.00	0.00	
3,200.0	20.42	317.27	3,039.9	682.6	-630.5	929.1	0.00	0.00	
3,300.0	20.42	317.27	3,133.6	708.2	-654.2	964.0	0.00	0.00	
3,400.0	20.42	317.27	3,227.4	733.9	-677.8	998.9	0.00	0.00	
3,500.0	20.42	317.27	3,321.1	759.5	-701.5	1,033.8	0.00	0.00	
3,600.0	20.42	317.27	3,414.8	785.1	-725.2	1,068.6	0.00	0.00	
3,700.0	20.42	317.27	3,508.5	810.8	-748.8	1,103.5	0.00	0.00	
3,800.0	20.42	317.27	3,602.2	836.4	-772.5	1,138.4	0.00	0.00	
3,900.0	20.42	317.27	3,695.9	862.0	-796.2	1,173.3	0.00	0.00	
4,000.0	20.42	317.27	3,789.7	887.7	-819.9	1,208.2	0.00	0.00	
4,100.0	20.42	317.27	3,883.4	913.3	-843.5	1,243.1	0.00	0.00	
4,200.0	20.42	317.27	3,977.1	938.9	-867.2	1,278.0	0.00	0.00	
4,300.0	20.42	317.27	4,070.8	964.6	-890.9	1,312.8	0.00	0.00	
4,400.0	20.42	317.27	4,164.5	990.2	-914.6	1,347.7	0.00	0.00	
4,500.0	20.42	317.27	4,258.2	1,015.8	-938.2	1,382.6	0.00	0.00	
4,600.0	20.42	317.27	4,352.0	1,041.4	-961.9	1,417.5	0.00	0.00	
4,700.0	20.42	317.27	4,445.7	1,067.1	-985.6	1,452.4	0.00	0.00	
4,800.0	20.42	317.27	4,539.4	1,092.7	-1,009.3	1,487.3	0.00	0.00	
4,862.2	20.42	317.27	4,597.6	1,108.6	-1,024.0	1,509.0	0.00	0.00	Start Drop -3.00
4,900.0	19.29	317.27	4,633.2	1,118.1	-1,032.7	1,521.8	3.00	-3.00	
5,000.0	16.29	317.27	4,728.4	1,140.5	-1,053.4	1,552.3	3.00	-3.00	
5,100.0	13.29	317.27	4,825.1	1,159.3	-1,070.7	1,577.9	3.00	-3.00	
5,200.0	10.29	317.27	4,923.0	1,174.3	-1,084.6	1,598.3	3.00	-3.00	
5,300.0	7.29	317.27	5,021.8	1,185.5	-1,094.9	1,613.5	3.00	-3.00	
5,400.0	4.29	317.27	5,121.3	1,192.9	-1,101.8	1,623.6	3.00	-3.00	
5,500.0	1.29	317.27	5,221.2	1,196.4	-1,105.1	1,628.5	3.00	-3.00	
5,502.8	1.20	317.27	5,224.0	1,196.5	-1,105.1	1,628.5	3.00	-3.00	Williams Fork
5,542.9	0.00	0.00	5,264.0	1,196.8	-1,105.4	1,629.0	3.00	-3.00	EOD; Inc=0° - Top of Gas - K22 596 WF05C-22
5,600.0	0.14	239.87	5,321.2	1,196.8	-1,105.5	1,629.0	0.25	0.25	
5,700.0	0.39	239.87	5,421.2	1,196.5	-1,105.9	1,629.1	0.25	0.25	
5,732.1	0.47	239.87	5,453.3	1,196.4	-1,106.1	1,629.1	0.25	0.25	
5,800.0	0.47	239.87	5,521.2	1,196.1	-1,106.6	1,629.3	0.00	0.00	
5,900.0	0.47	239.87	5,621.2	1,195.7	-1,107.3	1,629.5	0.00	0.00	
6,000.0	0.47	239.87	5,721.2	1,195.3	-1,108.0	1,629.7	0.00	0.00	
6,100.0	0.47	239.87	5,821.1	1,194.9	-1,108.7	1,629.9	0.00	0.00	
6,200.0	0.47	239.87	5,921.1	1,194.5	-1,109.4	1,630.0	0.00	0.00	
6,300.0	0.47	239.87	6,021.1	1,194.1	-1,110.1	1,630.2	0.00	0.00	
6,400.0	0.47	239.87	6,121.1	1,193.6	-1,110.8	1,630.4	0.00	0.00	
6,500.0	0.47	239.87	6,221.1	1,193.2	-1,111.6	1,630.6	0.00	0.00	
6,600.0	0.47	239.87	6,321.1	1,192.8	-1,112.3	1,630.8	0.00	0.00	
6,700.0	0.47	239.87	6,421.1	1,192.4	-1,113.0	1,631.0	0.00	0.00	
6,800.0	0.47	239.87	6,521.1	1,192.0	-1,113.7	1,631.2	0.00	0.00	
6,900.0	0.47	239.87	6,621.1	1,191.6	-1,114.4	1,631.4	0.00	0.00	
7,000.0	0.47	239.87	6,721.1	1,191.2	-1,115.1	1,631.6	0.00	0.00	
7,100.0	0.47	239.87	6,821.1	1,190.7	-1,115.8	1,631.8	0.00	0.00	
7,200.0	0.47	239.87	6,921.1	1,190.3	-1,116.6	1,632.0	0.00	0.00	

Cathedral Energy Services

Planning Report

Database:	EDM 2003.21 US Multi Users DB	Local Co-ordinate Reference:	Well NP WF05C-22 K22 596
Company:	EnCana Oil & Gas (USA) Inc	TVD Reference:	WF05C-22 K22 596 @ 6546.0ft (Original Well Elev)
Project:	North Piceance	MD Reference:	WF05C-22 K22 596 @ 6546.0ft (Original Well Elev)
Site:	K22 596 Pad (S22-T5S-R96W)	North Reference:	True
Well:	NP WF05C-22 K22 596	Survey Calculation Method:	Minimum Curvature
Wellbore:	DD		
Design:	Plan #1		

Planned Survey

Measured Depth (ft)	Inclination (°)	Azimuth (°)	Vertical Depth (ft)	+N/-S (ft)	+E/-W (ft)	Vertical Section (ft)	Dogleg Rate (°/100ft)	Build Rate (°/100ft)	Comments / Formations
7,300.0	0.47	239.87	7,021.1	1,189.9	-1,117.3	1,632.2	0.00	0.00	
7,400.0	0.47	239.87	7,121.1	1,189.5	-1,118.0	1,632.4	0.00	0.00	
7,500.0	0.47	239.87	7,221.1	1,189.1	-1,118.7	1,632.6	0.00	0.00	
7,600.0	0.47	239.87	7,321.1	1,188.7	-1,119.4	1,632.8	0.00	0.00	
7,700.0	0.47	239.87	7,421.1	1,188.2	-1,120.1	1,633.0	0.00	0.00	
7,800.0	0.47	239.87	7,521.1	1,187.8	-1,120.8	1,633.1	0.00	0.00	
7,900.0	0.47	239.87	7,621.1	1,187.4	-1,121.6	1,633.3	0.00	0.00	
8,000.0	0.47	239.87	7,721.1	1,187.0	-1,122.3	1,633.5	0.00	0.00	
8,100.0	0.47	239.87	7,821.1	1,186.6	-1,123.0	1,633.7	0.00	0.00	
8,200.0	0.47	239.87	7,921.1	1,186.2	-1,123.7	1,633.9	0.00	0.00	
8,300.0	0.47	239.87	8,021.1	1,185.8	-1,124.4	1,634.1	0.00	0.00	
8,400.0	0.47	239.87	8,121.1	1,185.3	-1,125.1	1,634.3	0.00	0.00	
8,500.0	0.47	239.87	8,221.1	1,184.9	-1,125.8	1,634.5	0.00	0.00	
8,600.0	0.47	239.87	8,321.1	1,184.5	-1,126.6	1,634.7	0.00	0.00	
8,700.0	0.47	239.87	8,421.1	1,184.1	-1,127.3	1,634.9	0.00	0.00	
8,800.0	0.47	239.87	8,521.1	1,183.7	-1,128.0	1,635.1	0.00	0.00	
8,900.0	0.47	239.87	8,621.1	1,183.3	-1,128.7	1,635.3	0.00	0.00	
9,000.0	0.47	239.87	8,721.0	1,182.9	-1,129.4	1,635.5	0.00	0.00	
9,003.0	0.47	239.87	8,724.0	1,182.8	-1,129.4	1,635.5	0.00	0.00	Rollins - K22 596 WF05C-22 TGT 2 - K22 596 \
9,078.0	0.47	239.87	8,799.0	1,182.5	-1,130.0	1,635.6	0.00	0.00	Drillers TD @ 9078'
9,100.0	0.47	239.87	8,821.0	1,182.4	-1,130.1	1,635.7	0.00	0.00	
9,200.0	0.47	239.87	8,921.0	1,182.0	-1,130.9	1,635.9	0.00	0.00	
9,300.0	0.47	239.87	9,021.0	1,181.6	-1,131.6	1,636.0	0.00	0.00	
9,400.0	0.47	239.87	9,121.0	1,181.2	-1,132.3	1,636.2	0.00	0.00	
9,500.0	0.47	239.87	9,221.0	1,180.8	-1,133.0	1,636.4	0.00	0.00	
9,600.0	0.47	239.87	9,321.0	1,180.4	-1,133.7	1,636.6	0.00	0.00	
9,700.0	0.47	239.87	9,421.0	1,180.0	-1,134.4	1,636.8	0.00	0.00	
9,800.0	0.47	239.87	9,521.0	1,179.5	-1,135.1	1,637.0	0.00	0.00	
9,900.0	0.47	239.87	9,621.0	1,179.1	-1,135.9	1,637.2	0.00	0.00	
10,000.0	0.47	239.87	9,721.0	1,178.7	-1,136.6	1,637.4	0.00	0.00	
10,100.0	0.47	239.87	9,821.0	1,178.3	-1,137.3	1,637.6	0.00	0.00	
10,200.0	0.47	239.87	9,921.0	1,177.9	-1,138.0	1,637.8	0.00	0.00	
10,300.0	0.47	239.87	10,021.0	1,177.5	-1,138.7	1,638.0	0.00	0.00	
10,400.0	0.47	239.87	10,121.0	1,177.1	-1,139.4	1,638.2	0.00	0.00	
10,500.0	0.47	239.87	10,221.0	1,176.6	-1,140.1	1,638.4	0.00	0.00	
10,600.0	0.47	239.87	10,321.0	1,176.2	-1,140.9	1,638.6	0.00	0.00	
10,700.0	0.47	239.87	10,421.0	1,175.8	-1,141.6	1,638.8	0.00	0.00	
10,779.0	0.47	239.87	10,500.0	1,175.5	-1,142.1	1,638.9	0.00	0.00	Permit TD @ 10779'

Cathedral Energy Services

Planning Report

Database:	EDM 2003.21 US Multi Users DB	Local Co-ordinate Reference:	Well NP WF05C-22 K22 596
Company:	EnCana Oil & Gas (USA) Inc	TVD Reference:	WF05C-22 K22 596 @ 6546.0ft (Original Well Elev)
Project:	North Piceance	MD Reference:	WF05C-22 K22 596 @ 6546.0ft (Original Well Elev)
Site:	K22 596 Pad (S22-T5S-R96W)	North Reference:	True
Well:	NP WF05C-22 K22 596	Survey Calculation Method:	Minimum Curvature
Wellbore:	DD		
Design:	Plan #1		

Targets									
Target Name	Dip Angle	Dip Dir.	TVD	+N/-S	+E/-W	Northing	Easting	Latitude	Longitude
- hit/miss target	(°)	(°)	(ft)	(ft)	(ft)	(ft)	(ft)		
- Shape									
K22 596 WF05C-22 TG ⁻ - plan hits target center - Rectangle (sides W100.0 H200.0 D0.0)	0.00	0.00	8,724.0	1,182.8	-1,129.4	1,655,363.05	2,249,836.84	39° 36' 9.26 N	108° 9' 45.69 W
K22 596 WF05C-22 BHL - plan hits target center - Rectangle (sides W30.0 H50.0 D0.0)	0.00	0.00	8,724.0	1,182.8	-1,129.4	1,655,363.05	2,249,836.84	39° 36' 9.26 N	108° 9' 45.69 W
K22 596 WF05C-22 TG ⁻ - plan hits target center - Point	0.00	0.00	5,264.0	1,196.8	-1,105.4	1,655,376.30	2,249,861.28	39° 36' 9.40 N	108° 9' 45.38 W
K22 596 WF05C-22 TO ⁽ - plan misses target center by 27.8ft at 5542.9ft MD (5264.0 TVD, 1196.8 N, -1105.4 E) - Rectangle (sides W100.0 H200.0 D300.0)	0.00	0.00	5,264.0	1,182.8	-1,129.4	1,655,363.05	2,249,836.84	39° 36' 9.26 N	108° 9' 45.69 W

Formations						
Measured Depth	Vertical Depth	Name	Lithology	Dip	Dip Direction	
(ft)	(ft)			(°)	(°)	
5,502.8	5,224.0	Williams Fork		0.00		
5,542.8	5,264.0	Top of Gas		0.00		
9,003.0	8,724.0	Rollins		0.00		

Plan Annotations					
Measured Depth	Vertical Depth	Local Coordinates		Comment	
(ft)	(ft)	+N/-S	+E/-W		
		(ft)	(ft)		
200.0	200.0	0.0	0.0	KOP @ 200'	
880.7	866.4	88.2	-81.4	EOB; Inc=20.4°	
4,862.2	4,597.6	1,108.6	-1,024.0	Start Drop -3.00	
5,542.8	5,264.0	1,196.8	-1,105.4	EOD; Inc=0°	
9,078.0	8,799.0	1,196.4	-1,106.1	Drillers TD @ 9078'	
10,779.0	10,500.0	1,182.8	-1,129.4	Permit TD @ 10779'	