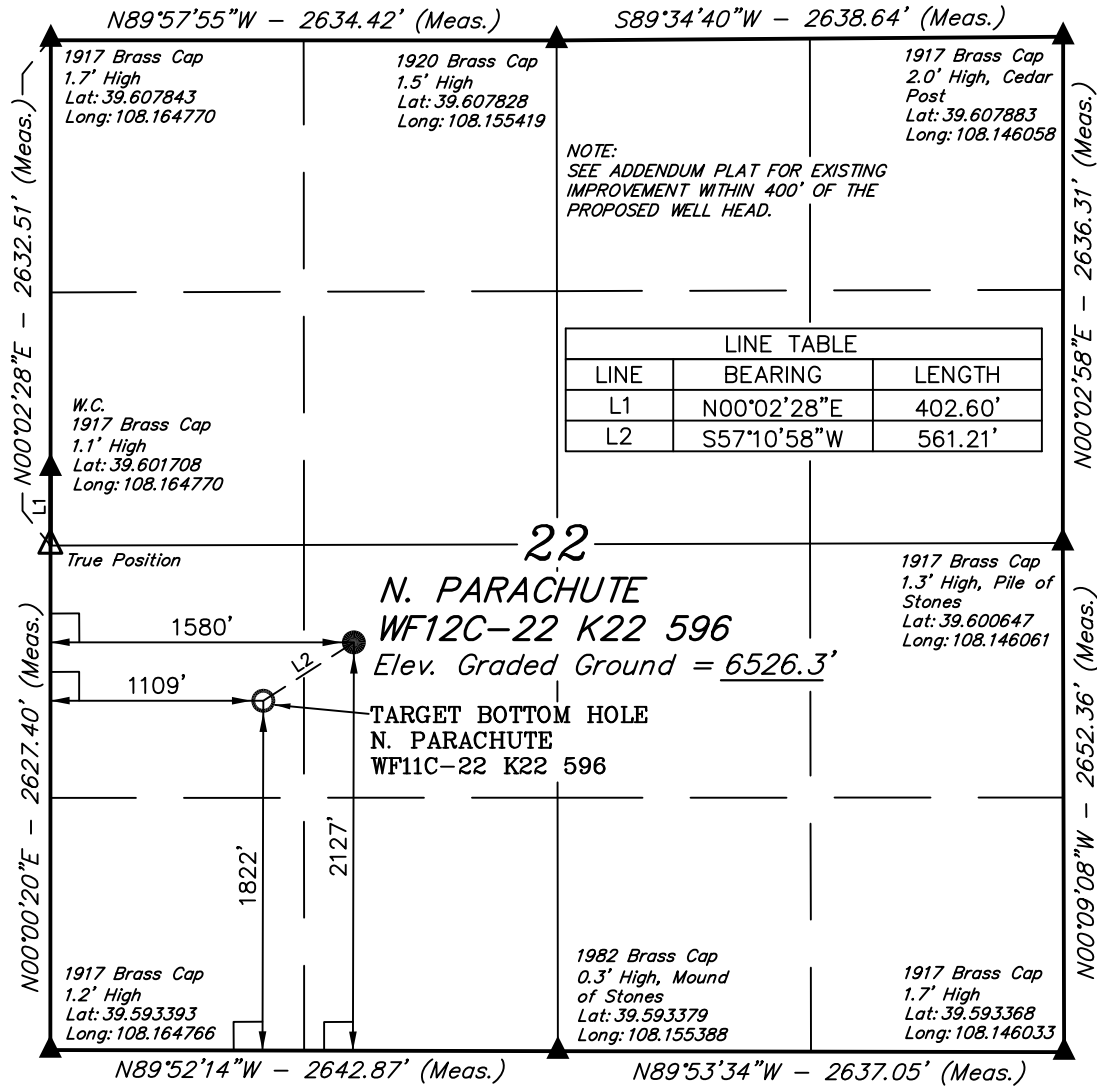


T5S, R96W, 6th P.M.

EnCana OIL & GAS (USA) INC.

Well location, N. PARACHUTE WF12C-22 K22 596, located as shown in the NE 1/4 SW 1/4 of Section 22, T5S, R96W, 6th P.M., Garfield County, Colorado.



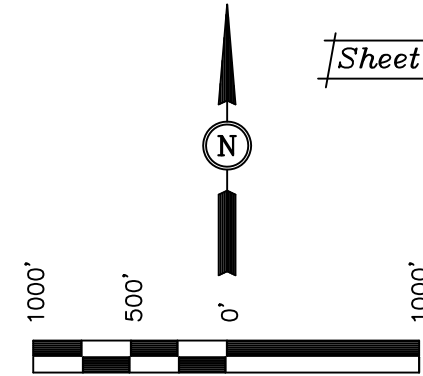
BASIS OF ELEVATION

SPOT ELEVATION AT THE NORTHWEST CORNER OF SECTION 30, T5S, R95W, 6th P.M. TAKEN FROM THE FORKED GULCH QUADRANGLE, COLORADO, GARFIELD COUNTY, 7.5 MINUTE SERIES (TOPOGRAPHICAL MAP) PUBLISHED BY THE UNITED STATES DEPARTMENT OF THE INTERIOR, GEOLOGICAL SURVEY. SAID ELEVATION IS MARKED AS BEING 5966 FEET.

BASIS OF BEARINGS

BASIS OF BEARINGS IS A G.P.S. OBSERVATION.

Sheet 1ii of 11



SCALE

CERTIFICATE

THIS IS TO CERTIFY THAT THE ABOVE PLAT WAS PREPARED FROM FIELD NOTES OF ACTUAL SURVEYS MADE BY ME OR UNDER MY SUPERVISION AND THAT THE SAME ARE TRUE AND CORRECT TO THE BEST OF MY KNOWLEDGE AND BELIEF.

ROBERT L. KAY
 REGISTERED LAND SURVEYOR
 REGISTRATION NO. 17492
 STATE OF COLORADO

Revised: 06-09-09 D.R.B.

UINTAH ENGINEERING & LAND SURVEYING
 85 SOUTH 200 EAST - VERNAL, UTAH 84078
 (435) 789-1017

LEGEND:

- └─┘ = 90° SYMBOL
- = PROPOSED WELL HEAD.
- ▲ = SECTION CORNERS LOCATED.

| | | | |
|--|--|--|--|
| NAD 83 (TARGET BOTTOM HOLE) | | NAD 83 (SURFACE LOCATION) | |
| LATITUDE = 39°35'54.19" (39.598386) | | LATITUDE = 39°35'57.20" (39.599222) | |
| LONGITUDE = 108°09'39.00" (108.160833) | | LONGITUDE = 108°09'32.98" (108.159161) | |
| NAD 27 (TARGET BOTTOM HOLE) | | NAD 27 (SURFACE LOCATION) | |
| LATITUDE = 39°35'54.27" (39.598408) | | LATITUDE = 39°35'57.28" (39.599244) | |
| LONGITUDE = 108°09'36.71" (108.160197) | | LONGITUDE = 108°09'30.69" (108.158525) | |

PDOP = 2.1

| | | |
|---------------------------|-------------------------------------|-------------------------|
| SCALE 1" = 1000' | DATE SURVEYED: 10-31-08 | DATE DRAWN: 04-15-09 |
| PARTY B.D. J.L. D.R.B. | REFERENCES G.L.O. PLAT | |
| WEATHER COLD | FILE EnCana OIL & GAS (USA) INC. | |