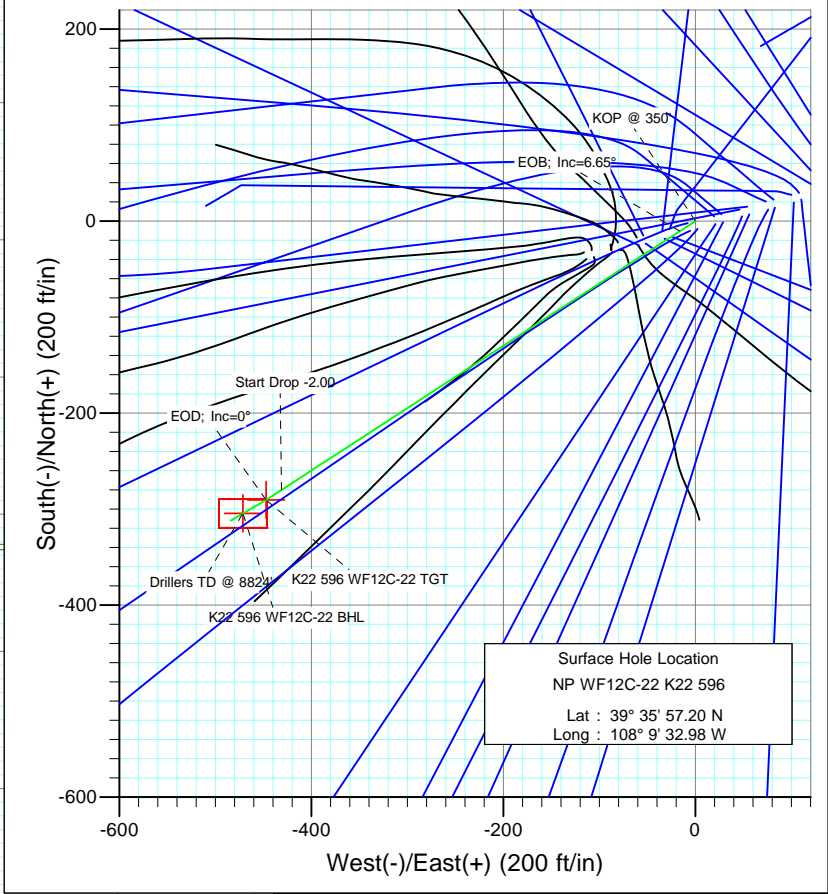
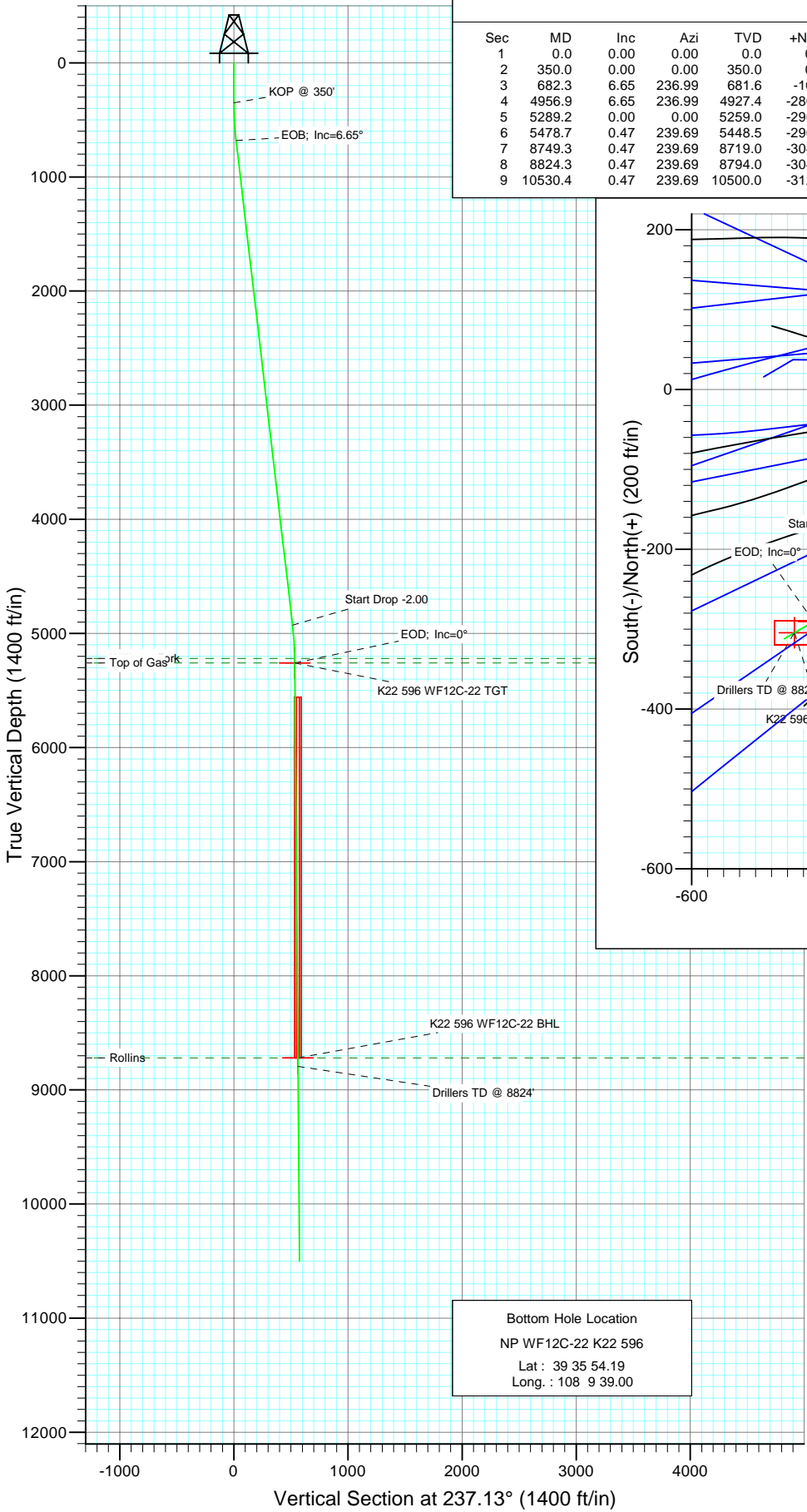




Project: North Piceance  
 Site: K22 596 Pad (S22-T5S-R96W)  
 Well: NP WF12C-22 K22 596  
 Wellbore: DD  
 Design: Plan #2



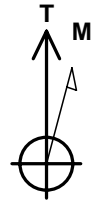
SECTION DETAILS											
Sec	MD	Inc	Azi	TVD	+N/-S	+E/-W	DLeg	TFace	VSec	Target	
1	0.0	0.00	0.00	0.0	0.0	0.0	0.00	0.00	0.0		
2	350.0	0.00	0.00	350.0	0.0	0.0	0.00	0.00	0.0		
3	682.3	6.65	236.99	681.6	-10.5	-16.1	2.00	236.99	19.3		
4	4956.9	6.65	236.99	4927.4	-280.0	-431.1	0.00	0.00	514.0		
5	5289.2	0.00	0.00	5259.0	-290.5	-447.2	2.00	180.00	533.3	K22 596 WF12C-22 TGT	
6	5478.7	0.47	239.69	5448.5	-290.9	-447.9	0.25	239.69	534.0		
7	8749.3	0.47	239.69	8719.0	-304.5	-471.2	0.00	0.00	561.1	K22 596 WF12C-22 BHL	
8	8824.3	0.47	239.69	8794.0	-304.8	-471.8	0.00	0.00	561.7		
9	10530.4	0.47	239.69	10500.0	-312.0	-483.9	0.00	0.00	575.8		



Surface Hole Location  
 NP WF12C-22 K22 596  
 Lat : 39° 35' 57.20 N  
 Long : 108° 9' 32.98 W

Bottom Hole Location  
 NP WF12C-22 K22 596  
 Lat : 39 35 54.19  
 Long : 108 9 39.00

FORMATION TOP DETAILS		
TVDPath	MDPath	Formation
5219.0	5249.2	Williams Fork
5259.0	5289.2	Top of Gas
8719.0	8749.3	Rollins



Azimuths to True North  
 Magnetic North: 10.67°

Magnetic Field  
 Strength: 52506.0snT  
 Dip Angle: 65.86°  
 Date: 6/24/2009  
 Model: IGRF200510

DESIGN DETAILS: Plan #2				
85xxx; LR				
WELL @ 6546.0ft (Original Well Elev)				
Target	Azimuth	Origin	N/S	E/Wfrom TVD
K22 596 WF12C-22 BHL	237.13	Slot	0.0	0.0

## Planning Report

<b>Database:</b> US EDM 2003.21 Multi User Db	<b>Local Co-ordinate Reference:</b> Well NP WF12C-22 K22 596
<b>Company:</b> EnCana Oil & Gas (USA) Inc	<b>TVD Reference:</b> WELL @ 6546.0ft (Original Well Elev)
<b>Project:</b> North Piceance	<b>MD Reference:</b> WELL @ 6546.0ft (Original Well Elev)
<b>Site:</b> K22 596 Pad (S22-T5S-R96W)	<b>North Reference:</b> True
<b>Well:</b> NP WF12C-22 K22 596	<b>Survey Calculation Method:</b> Minimum Curvature
<b>Wellbore:</b> DD	
<b>Design:</b> Plan #2	

<b>Project</b> North Piceance		
<b>Map System:</b> US State Plane 1983	<b>System Datum:</b> Mean Sea Level	
<b>Geo Datum:</b> North American Datum 1983		
<b>Map Zone:</b> Colorado Central Zone		

<b>Site</b> K22 596 Pad (S22-T5S-R96W)					
<b>Site Position:</b>		<b>Northing:</b>	1,654,096.85 ft	<b>Latitude:</b>	39° 35' 57.02 N
<b>From:</b> Lat/Long		<b>Easting:</b>	2,250,762.90 ft	<b>Longitude:</b>	108° 9' 33.39 W
<b>Position Uncertainty:</b>	0.0 ft	<b>Slot Radius:</b>	0.000 in	<b>Grid Convergence:</b>	-1.68 °

<b>Well</b> NP WF12C-22 K22 596					
<b>Well Position</b>	<b>+N/-S</b>	0.0 ft	<b>Northing:</b>	1,654,114.18 ft	<b>Latitude:</b> 39° 35' 57.20 N
	<b>+E/-W</b>	0.0 ft	<b>Easting:</b>	2,250,795.52 ft	<b>Longitude:</b> 108° 9' 32.98 W
<b>Position Uncertainty</b>		0.0 ft	<b>Wellhead Elevation:</b>	ft	<b>Ground Level:</b> 6,524.0 ft

<b>Wellbore</b> DD					
<b>Magnetics</b>	<b>Model Name</b>	<b>Sample Date</b>	<b>Declination</b>	<b>Dip Angle</b>	<b>Field Strength</b>
	IGRF200510	6/24/2009	(°) 10.67	(°) 65.86	(nT) 52,506

<b>Design</b> Plan #2				
<b>Audit Notes:</b>				
<b>Version:</b>	<b>Phase:</b>	PLAN	<b>Tie On Depth:</b>	0.0
<b>Vertical Section:</b>	<b>Depth From (TVD)</b>	<b>+N/-S</b>	<b>+E/-W</b>	<b>Direction</b>
	(ft)	(ft)	(ft)	(°)
	0.0	0.0	0.0	237.13

<b>Plan Sections</b>										
Measured Depth (ft)	Inclination (°)	Azimuth (°)	Vertical Depth (ft)	+N/-S (ft)	+E/-W (ft)	Dogleg Rate (°/100ft)	Build Rate (°/100ft)	Turn Rate (°/100ft)	TFO (°)	Target
0.0	0.00	0.00	0.0	0.0	0.0	0.00	0.00	0.00	0.00	
350.0	0.00	0.00	350.0	0.0	0.0	0.00	0.00	0.00	0.00	
682.3	6.65	236.99	681.6	-10.5	-16.1	2.00	2.00	0.00	236.99	
4,956.9	6.65	236.99	4,927.4	-280.0	-431.1	0.00	0.00	0.00	0.00	
5,289.2	0.00	0.00	5,259.0	-290.5	-447.2	2.00	-2.00	0.00	180.00	K22 596 WF12C-22 T
5,478.7	0.47	239.69	5,448.5	-290.9	-447.9	0.25	0.25	-63.50	239.69	
8,749.3	0.47	239.69	8,719.0	-304.5	-471.2	0.00	0.00	0.00	0.00	K22 596 WF12C-22 E
8,824.3	0.47	239.69	8,794.0	-304.8	-471.8	0.00	0.00	0.00	0.00	
10,530.4	0.47	239.69	10,500.0	-312.0	-483.9	0.00	0.00	0.00	0.00	

## Planning Report

<b>Database:</b>	US EDM 2003.21 Multi User Db	<b>Local Co-ordinate Reference:</b>	Well NP WF12C-22 K22 596
<b>Company:</b>	EnCana Oil & Gas (USA) Inc	<b>TVD Reference:</b>	WELL @ 6546.0ft (Original Well Elev)
<b>Project:</b>	North Piceance	<b>MD Reference:</b>	WELL @ 6546.0ft (Original Well Elev)
<b>Site:</b>	K22 596 Pad (S22-T5S-R96W)	<b>North Reference:</b>	True
<b>Well:</b>	NP WF12C-22 K22 596	<b>Survey Calculation Method:</b>	Minimum Curvature
<b>Wellbore:</b>	DD		
<b>Design:</b>	Plan #2		

Planned Survey									
Measured Depth (ft)	Inclination (°)	Azimuth (°)	Vertical Depth (ft)	+N/-S (ft)	+E/-W (ft)	Vertical Section (ft)	Dogleg Rate (°/100ft)	Build Rate (°/100ft)	Comments / Formations
0.0	0.00	0.00	0.0	0.0	0.0	0.0	0.00	0.00	
100.0	0.00	0.00	100.0	0.0	0.0	0.0	0.00	0.00	
200.0	0.00	0.00	200.0	0.0	0.0	0.0	0.00	0.00	
300.0	0.00	0.00	300.0	0.0	0.0	0.0	0.00	0.00	
350.0	0.00	0.00	350.0	0.0	0.0	0.0	0.00	0.00	KOP @ 350'
400.0	1.00	236.99	400.0	-0.2	-0.4	0.4	2.00	2.00	
500.0	3.00	236.99	499.9	-2.1	-3.3	3.9	2.00	2.00	
600.0	5.00	236.99	599.7	-5.9	-9.1	10.9	2.00	2.00	
682.3	6.65	236.99	681.6	-10.5	-16.1	19.3	2.00	2.00	EOB; Inc=6.65°
700.0	6.65	236.99	699.1	-11.6	-17.9	21.3	0.00	0.00	
800.0	6.65	236.99	798.5	-17.9	-27.6	32.9	0.00	0.00	
900.0	6.65	236.99	897.8	-24.2	-37.3	44.4	0.00	0.00	
1,000.0	6.65	236.99	997.1	-30.5	-47.0	56.0	0.00	0.00	
1,100.0	6.65	236.99	1,096.4	-36.8	-56.7	67.6	0.00	0.00	
1,200.0	6.65	236.99	1,195.8	-43.1	-66.4	79.2	0.00	0.00	
1,300.0	6.65	236.99	1,295.1	-49.4	-76.1	90.7	0.00	0.00	
1,400.0	6.65	236.99	1,394.4	-55.7	-85.8	102.3	0.00	0.00	
1,500.0	6.65	236.99	1,493.8	-62.0	-95.5	113.9	0.00	0.00	
1,600.0	6.65	236.99	1,593.1	-68.3	-105.2	125.5	0.00	0.00	
1,700.0	6.65	236.99	1,692.4	-74.7	-114.9	137.0	0.00	0.00	
1,800.0	6.65	236.99	1,791.7	-81.0	-124.6	148.6	0.00	0.00	
1,900.0	6.65	236.99	1,891.1	-87.3	-134.3	160.2	0.00	0.00	
2,000.0	6.65	236.99	1,990.4	-93.6	-144.0	171.8	0.00	0.00	
2,100.0	6.65	236.99	2,089.7	-99.9	-153.8	183.3	0.00	0.00	
2,200.0	6.65	236.99	2,189.1	-106.2	-163.5	194.9	0.00	0.00	
2,300.0	6.65	236.99	2,288.4	-112.5	-173.2	206.5	0.00	0.00	
2,400.0	6.65	236.99	2,387.7	-118.8	-182.9	218.1	0.00	0.00	
2,500.0	6.65	236.99	2,487.0	-125.1	-192.6	229.6	0.00	0.00	
2,600.0	6.65	236.99	2,586.4	-131.4	-202.3	241.2	0.00	0.00	
2,700.0	6.65	236.99	2,685.7	-137.7	-212.0	252.8	0.00	0.00	
2,800.0	6.65	236.99	2,785.0	-144.0	-221.7	264.4	0.00	0.00	
2,900.0	6.65	236.99	2,884.4	-150.3	-231.4	275.9	0.00	0.00	
3,000.0	6.65	236.99	2,983.7	-156.6	-241.1	287.5	0.00	0.00	
3,100.0	6.65	236.99	3,083.0	-162.9	-250.8	299.1	0.00	0.00	
3,200.0	6.65	236.99	3,182.3	-169.2	-260.5	310.7	0.00	0.00	
3,300.0	6.65	236.99	3,281.7	-175.5	-270.2	322.2	0.00	0.00	
3,400.0	6.65	236.99	3,381.0	-181.8	-279.9	333.8	0.00	0.00	
3,500.0	6.65	236.99	3,480.3	-188.1	-289.6	345.4	0.00	0.00	
3,600.0	6.65	236.99	3,579.6	-194.4	-299.3	357.0	0.00	0.00	
3,700.0	6.65	236.99	3,679.0	-200.8	-309.1	368.5	0.00	0.00	
3,800.0	6.65	236.99	3,778.3	-207.1	-318.8	380.1	0.00	0.00	
3,900.0	6.65	236.99	3,877.6	-213.4	-328.5	391.7	0.00	0.00	
4,000.0	6.65	236.99	3,977.0	-219.7	-338.2	403.3	0.00	0.00	
4,100.0	6.65	236.99	4,076.3	-226.0	-347.9	414.8	0.00	0.00	
4,200.0	6.65	236.99	4,175.6	-232.3	-357.6	426.4	0.00	0.00	
4,300.0	6.65	236.99	4,274.9	-238.6	-367.3	438.0	0.00	0.00	
4,400.0	6.65	236.99	4,374.3	-244.9	-377.0	449.6	0.00	0.00	
4,500.0	6.65	236.99	4,473.6	-251.2	-386.7	461.1	0.00	0.00	
4,600.0	6.65	236.99	4,572.9	-257.5	-396.4	472.7	0.00	0.00	
4,700.0	6.65	236.99	4,672.3	-263.8	-406.1	484.3	0.00	0.00	
4,800.0	6.65	236.99	4,771.6	-270.1	-415.8	495.9	0.00	0.00	
4,900.0	6.65	236.99	4,870.9	-276.4	-425.5	507.4	0.00	0.00	

Planning Report

<b>Database:</b>	US EDM 2003.21 Multi User Db	<b>Local Co-ordinate Reference:</b>	Well NP WF12C-22 K22 596
<b>Company:</b>	EnCana Oil & Gas (USA) Inc	<b>TVD Reference:</b>	WELL @ 6546.0ft (Original Well Elev)
<b>Project:</b>	North Piceance	<b>MD Reference:</b>	WELL @ 6546.0ft (Original Well Elev)
<b>Site:</b>	K22 596 Pad (S22-T5S-R96W)	<b>North Reference:</b>	True
<b>Well:</b>	NP WF12C-22 K22 596	<b>Survey Calculation Method:</b>	Minimum Curvature
<b>Wellbore:</b>	DD		
<b>Design:</b>	Plan #2		

Planned Survey									
Measured Depth (ft)	Inclination (°)	Azimuth (°)	Vertical Depth (ft)	+N/-S (ft)	+E/-W (ft)	Vertical Section (ft)	Dogleg Rate (°/100ft)	Build Rate (°/100ft)	Comments / Formations
4,956.9	6.65	236.99	4,927.4	-280.0	-431.1	514.0	0.00	0.00	Start Drop -2.00
5,000.0	5.78	236.99	4,970.3	-282.5	-435.0	518.7	2.00	-2.00	
5,100.0	3.78	236.99	5,069.9	-287.1	-442.0	527.0	2.00	-2.00	
5,200.0	1.78	236.99	5,169.8	-289.7	-446.0	531.9	2.00	-2.00	
5,249.2	0.80	236.99	5,219.0	-290.3	-447.0	533.0	2.00	-2.00	Williams Fork
5,289.2	0.00	236.99	5,259.0	-290.5	-447.2	533.3	2.00	-2.00	EOD; Inc=0° - Top of Gas - K22 596 WF11C-22
5,300.0	0.03	239.69	5,269.8	-290.5	-447.2	533.3	0.25	0.25	
5,400.0	0.28	239.69	5,369.8	-290.6	-447.4	533.5	0.25	0.25	
5,478.7	0.47	239.69	5,448.5	-290.9	-447.9	534.0	0.25	0.25	
5,500.0	0.47	239.69	5,469.8	-291.0	-448.0	534.2	0.00	0.00	
5,600.0	0.47	239.69	5,569.8	-291.4	-448.7	535.0	0.00	0.00	
5,700.0	0.47	239.69	5,669.8	-291.8	-449.5	535.9	0.00	0.00	
5,800.0	0.47	239.69	5,769.8	-292.2	-450.2	536.7	0.00	0.00	
5,900.0	0.47	239.69	5,869.8	-292.6	-450.9	537.5	0.00	0.00	
6,000.0	0.47	239.69	5,969.8	-293.1	-451.6	538.4	0.00	0.00	
6,100.0	0.47	239.69	6,069.8	-293.5	-452.3	539.2	0.00	0.00	
6,200.0	0.47	239.69	6,169.8	-293.9	-453.0	540.0	0.00	0.00	
6,300.0	0.47	239.69	6,269.8	-294.3	-453.7	540.8	0.00	0.00	
6,400.0	0.47	239.69	6,369.7	-294.7	-454.5	541.7	0.00	0.00	
6,500.0	0.47	239.69	6,469.7	-295.1	-455.2	542.5	0.00	0.00	
6,600.0	0.47	239.69	6,569.7	-295.6	-455.9	543.3	0.00	0.00	
6,700.0	0.47	239.69	6,669.7	-296.0	-456.6	544.1	0.00	0.00	
6,800.0	0.47	239.69	6,769.7	-296.4	-457.3	545.0	0.00	0.00	
6,900.0	0.47	239.69	6,869.7	-296.8	-458.0	545.8	0.00	0.00	
7,000.0	0.47	239.69	6,969.7	-297.2	-458.7	546.6	0.00	0.00	
7,100.0	0.47	239.69	7,069.7	-297.7	-459.4	547.4	0.00	0.00	
7,200.0	0.47	239.69	7,169.7	-298.1	-460.2	548.3	0.00	0.00	
7,300.0	0.47	239.69	7,269.7	-298.5	-460.9	549.1	0.00	0.00	
7,400.0	0.47	239.69	7,369.7	-298.9	-461.6	549.9	0.00	0.00	
7,500.0	0.47	239.69	7,469.7	-299.3	-462.3	550.7	0.00	0.00	
7,600.0	0.47	239.69	7,569.7	-299.7	-463.0	551.6	0.00	0.00	
7,700.0	0.47	239.69	7,669.7	-300.2	-463.7	552.4	0.00	0.00	
7,800.0	0.47	239.69	7,769.7	-300.6	-464.4	553.2	0.00	0.00	
7,900.0	0.47	239.69	7,869.7	-301.0	-465.2	554.0	0.00	0.00	
8,000.0	0.47	239.69	7,969.7	-301.4	-465.9	554.9	0.00	0.00	
8,100.0	0.47	239.69	8,069.7	-301.8	-466.6	555.7	0.00	0.00	
8,200.0	0.47	239.69	8,169.7	-302.2	-467.3	556.5	0.00	0.00	
8,300.0	0.47	239.69	8,269.7	-302.7	-468.0	557.3	0.00	0.00	
8,400.0	0.47	239.69	8,369.7	-303.1	-468.7	558.2	0.00	0.00	
8,500.0	0.47	239.69	8,469.7	-303.5	-469.4	559.0	0.00	0.00	
8,600.0	0.47	239.69	8,569.7	-303.9	-470.2	559.8	0.00	0.00	
8,700.0	0.47	239.69	8,669.7	-304.3	-470.9	560.7	0.00	0.00	
8,749.3	0.47	239.69	8,719.0	-304.5	-471.2	561.1	0.00	0.00	Rollins - K22 596 WF12C-22 BHL - K22 596 WI
8,800.0	0.47	239.69	8,769.7	-304.7	-471.6	561.5	0.00	0.00	
8,824.3	0.47	239.69	8,794.0	-304.8	-471.8	561.7	0.00	0.00	Drillers TD @ 8824'
8,900.0	0.47	239.69	8,869.7	-305.2	-472.3	562.3	0.00	0.00	
9,000.0	0.47	239.69	8,969.7	-305.6	-473.0	563.1	0.00	0.00	
9,100.0	0.47	239.69	9,069.7	-306.0	-473.7	564.0	0.00	0.00	
9,200.0	0.47	239.69	9,169.7	-306.4	-474.4	564.8	0.00	0.00	
9,300.0	0.47	239.69	9,269.6	-306.8	-475.1	565.6	0.00	0.00	
9,400.0	0.47	239.69	9,369.6	-307.2	-475.9	566.4	0.00	0.00	
9,500.0	0.47	239.69	9,469.6	-307.7	-476.6	567.3	0.00	0.00	

Planning Report

<b>Database:</b>	US EDM 2003.21 Multi User Db	<b>Local Co-ordinate Reference:</b>	Well NP WF12C-22 K22 596
<b>Company:</b>	EnCana Oil & Gas (USA) Inc	<b>TVD Reference:</b>	WELL @ 6546.0ft (Original Well Elev)
<b>Project:</b>	North Piceance	<b>MD Reference:</b>	WELL @ 6546.0ft (Original Well Elev)
<b>Site:</b>	K22 596 Pad (S22-T5S-R96W)	<b>North Reference:</b>	True
<b>Well:</b>	NP WF12C-22 K22 596	<b>Survey Calculation Method:</b>	Minimum Curvature
<b>Wellbore:</b>	DD		
<b>Design:</b>	Plan #2		

Planned Survey									
Measured Depth (ft)	Inclination (°)	Azimuth (°)	Vertical Depth (ft)	+N/-S (ft)	+E/-W (ft)	Vertical Section (ft)	Dogleg Rate (°/100ft)	Build Rate (°/100ft)	Comments / Formations
9,600.0	0.47	239.69	9,569.6	-308.1	-477.3	568.1	0.00	0.00	
9,700.0	0.47	239.69	9,669.6	-308.5	-478.0	568.9	0.00	0.00	
9,800.0	0.47	239.69	9,769.6	-308.9	-478.7	569.7	0.00	0.00	
9,900.0	0.47	239.69	9,869.6	-309.3	-479.4	570.6	0.00	0.00	
10,000.0	0.47	239.69	9,969.6	-309.8	-480.1	571.4	0.00	0.00	
10,100.0	0.47	239.69	10,069.6	-310.2	-480.9	572.2	0.00	0.00	
10,200.0	0.47	239.69	10,169.6	-310.6	-481.6	573.0	0.00	0.00	
10,300.0	0.47	239.69	10,269.6	-311.0	-482.3	573.9	0.00	0.00	
10,400.0	0.47	239.69	10,369.6	-311.4	-483.0	574.7	0.00	0.00	
10,500.0	0.47	239.69	10,469.6	-311.8	-483.7	575.5	0.00	0.00	
10,530.4	0.47	239.69	10,500.0	-312.0	-483.9	575.8	0.00	0.00	

Targets										
Target Name	Dip Angle (°)	Dip Dir. (°)	TVD (ft)	+N/-S (ft)	+E/-W (ft)	Northing (ft)	Easting (ft)	Latitude	Longitude	
K22 596 WF12C-22 BHI - hit/miss target - Shape - Rectangle (sides W30.0 H50.0 D0.0)	0.00	0.00	8,719.0	-304.5	-471.2	1,653,823.57	2,250,315.59	39° 35' 54.19 N	108° 9' 39.00 W	
K22 596 WF11C-22 TG <sup>+</sup> - plan hits target center - Rectangle (sides W100.0 H200.0 D0.0)	0.00	0.00	8,719.0	-304.5	-471.2	1,653,823.57	2,250,315.59	39° 35' 54.19 N	108° 9' 39.00 W	
K22 596 WF11C-22 TO <sup>(</sup> - plan misses target center by 27.8ft at 5289.2ft MD (5259.0 TVD, -290.5 N, -447.2 E) - Rectangle (sides W100.0 H200.0 D300.0)	0.00	0.00	5,259.0	-304.5	-471.2	1,653,823.57	2,250,315.59	39° 35' 54.19 N	108° 9' 39.00 W	
K22 596 WF12C-22 TG <sup>+</sup> - plan hits target center - Point	0.00	0.00	5,259.0	-290.5	-447.2	1,653,836.90	2,250,340.01	39° 35' 54.33 N	108° 9' 38.69 W	

Formations						
Measured Depth (ft)	Vertical Depth (ft)	Name	Lithology	Dip (°)	Dip Direction (°)	
5,249.2	5,219.0	Williams Fork		0.00		
5,289.2	5,259.0	Top of Gas		0.00		
8,749.3	8,719.0	Rollins		0.00		

Plan Annotations					
Measured Depth (ft)	Vertical Depth (ft)	+N/-S (ft)	+E/-W (ft)	Comment	
350.0	350.0	0.0	0.0	KOP @ 350'	
682.3	681.6	-10.5	-16.1	EOB; Inc=6.65°	
4,956.9	4,927.4	-280.0	-431.1	Start Drop -2.00	
5,289.2	5,259.0	-290.5	-447.2	EOD; Inc=0°	
8,824.3	8,794.0	-304.8	-471.8	Drillers TD @ 8824'	
10,530.4	10,500.0	-312.0	-483.9	Permit TD @ 10530'	