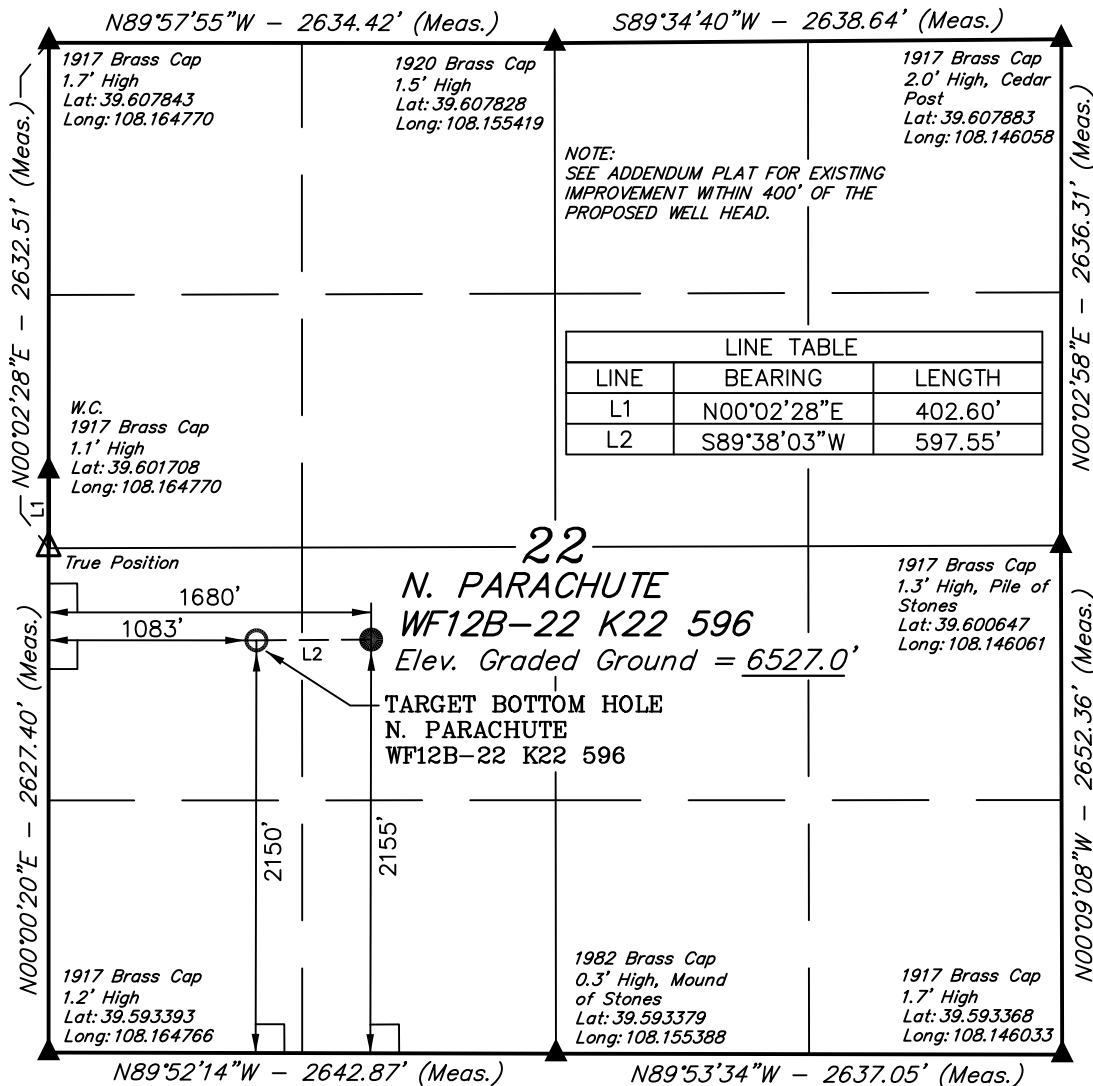


# T5S, R96W, 6th P.M.

## EnCana OIL & GAS (USA) INC.

Well location, N. PARACHUTE WF12B-22 K22 596, located as shown in the NE 1/4 SW 1/4 of Section 22, T5S, R96W, 6th P.M., Garfield County, Colorado.



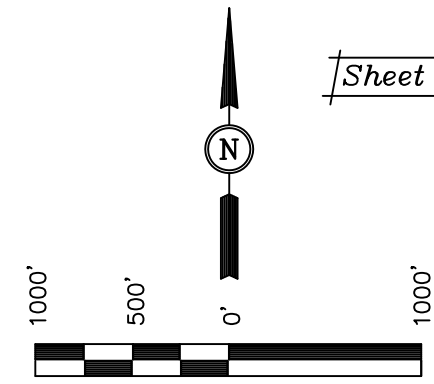
### BASIS OF ELEVATION

SPOT ELEVATION AT THE NORTHWEST CORNER OF SECTION 30, T5S, R95W, 6th P.M. TAKEN FROM THE FORKED GULCH QUADRANGLE, COLORADO, GARFIELD COUNTY, 7.5 MINUTE SERIES (TOPOGRAPHICAL MAP) PUBLISHED BY THE UNITED STATES DEPARTMENT OF THE INTERIOR, GEOLOGICAL SURVEY. SAID ELEVATION IS MARKED AS BEING 5966 FEET.

### BASIS OF BEARINGS

BASIS OF BEARINGS IS A G.P.S. OBSERVATION.

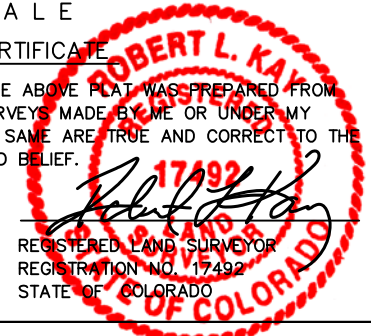
Sheet 1kk of 11



SCALE

### CERTIFICATE

THIS IS TO CERTIFY THAT THE ABOVE PLAT WAS PREPARED FROM FIELD NOTES OF ACTUAL SURVEYS MADE BY ME OR UNDER MY SUPERVISION AND THAT THE SAME ARE TRUE AND CORRECT TO THE BEST OF MY KNOWLEDGE AND BELIEF.



**UINTAH ENGINEERING & LAND SURVEYING**  
 85 SOUTH 200 EAST - VERNAL, UTAH 84078  
 (435) 789-1017

- LEGEND:**
- └─┘ = 90° SYMBOL
  - = PROPOSED WELL HEAD.
  - ▲ = SECTION CORNERS LOCATED.

NAD 83 (TARGET BOTTOM HOLE)		NAD 83 (SURFACE LOCATION)	
LATITUDE = 39°35'57.43" (39.599286)	LATITUDE = 39°35'57.47" (39.599297)	LATITUDE = 39°35'57.47" (39.599297)	LATITUDE = 39°35'57.56" (39.599322)
LONGITUDE = 108°09'39.33" (108.160925)	LONGITUDE = 108°09'39.33" (108.160925)	LONGITUDE = 108°09'31.70" (108.158806)	LONGITUDE = 108°09'29.41" (108.158169)
NAD 27 (TARGET BOTTOM HOLE)		NAD 27 (SURFACE LOCATION)	
LATITUDE = 39°35'57.51" (39.599308)	LATITUDE = 39°35'57.51" (39.599308)	LATITUDE = 39°35'57.56" (39.599322)	LATITUDE = 39°35'57.56" (39.599322)
LONGITUDE = 108°09'37.04" (108.160289)	LONGITUDE = 108°09'37.04" (108.160289)	LONGITUDE = 108°09'29.41" (108.158169)	LONGITUDE = 108°09'29.41" (108.158169)

PDOP = 2.1

SCALE 1" = 1000'	DATE SURVEYED: 10-31-08	DATE DRAWN: 04-15-09
PARTY B.D. J.L. D.R.B.	REFERENCES G.L.O. PLAT	
WEATHER COLD	FILE EnCana OIL & GAS (USA) INC.	