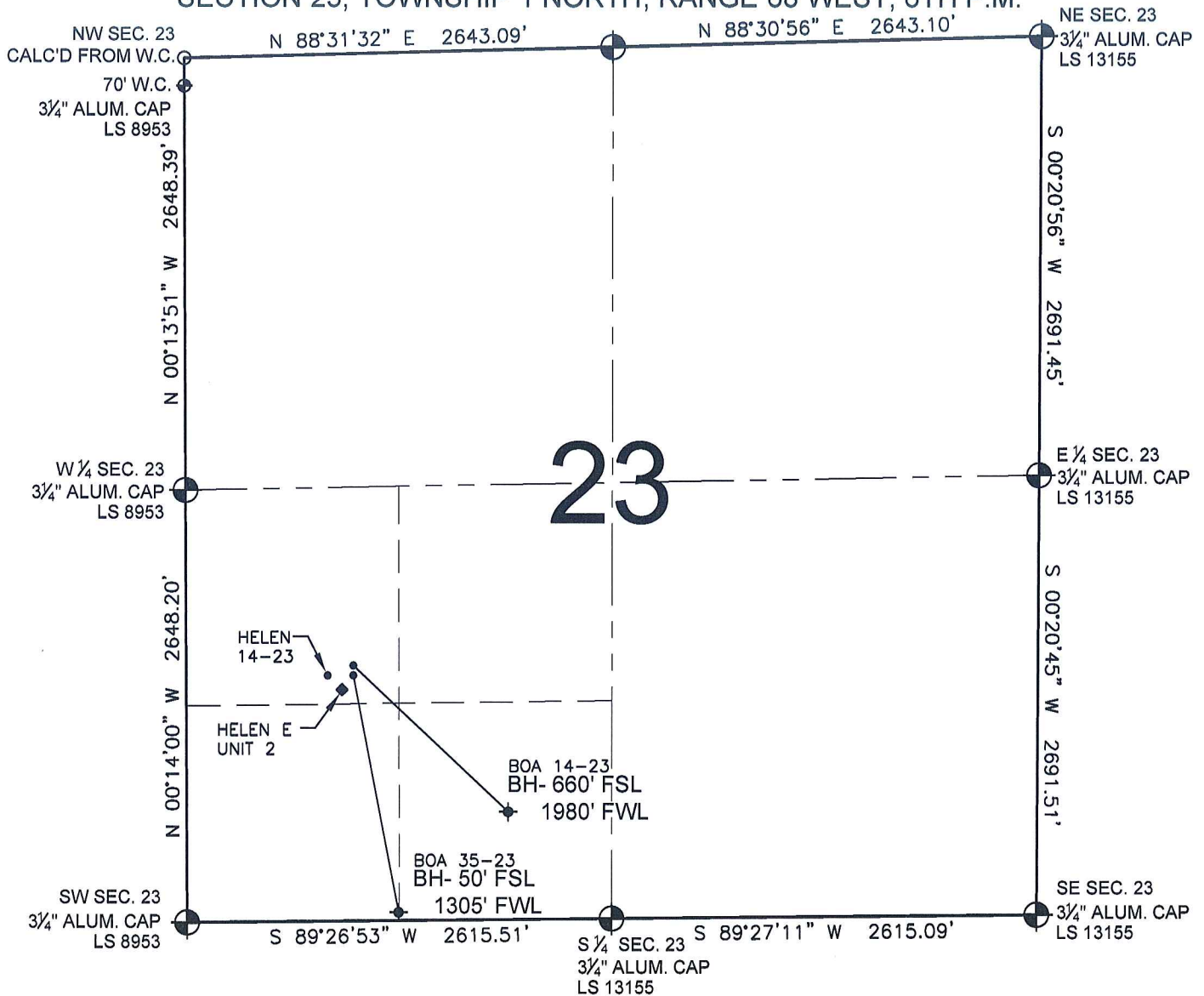


# PAD DRAWING - BOA 2 PAD

SECTION 23, TOWNSHIP 1 NORTH, RANGE 68 WEST, 6TH P.M.



## NOTES:

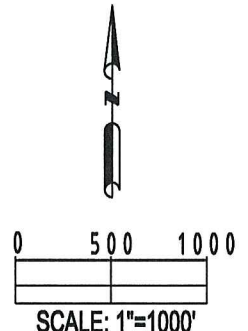
1. THIS SURVEY WAS DONE BY GPS METHODS AND CONFORMS TO THE MINIMUM STANDARDS SET BY THE C.O.G.C.C., RULE NO. 215 (PDOP VALUE IS LESS THAN 6.0, LATITUDE AND LONGITUDE ARE ACCURATE TO 5 DECIMAL PLACES, AND GPS OBSERVATIONS ARE DIFFERENTIAL AND DONE BY QUALIFIED PERSONNEL.)
2. ELEVATIONS SHOWN AT THE WELL HEAD, AS WELL AS HORIZONTAL CONTROL, ARE BASED ON GPS-RTK VALUES DERIVED FROM DOING 2-HOUR STATIC GPS SESSIONS AND REDUCTIONS USING O.P.U.S. SOLUTIONS.  
VERTICAL = NAVD88; HORIZONTAL = NAD83/92
3. THE BEARINGS SHOWN HEREON ARE BASED ON GPS OBSERVATIONS BETWEEN THE MONUMENTS SHOWN HEREON AS FOUND ON THE FIELD DATE BELOW.
4. DISTANCES SHOWN ARE AT GROUND LEVEL, AS MEASURED IN THE FIELD, WITH TIES TO WELLS MEASURED AT A PERPENDICULAR TO SECTION LINES.

## LEGEND

- = EXISTING MONUMENT   
 = BOTTOM HOLE   
 BH= BOTTOM HOLE  
 = PROPOSED WELL   
 = EXISTING WELL

## NOTES:

BOA 14-23 TO BE AT 1532' FSL, 1030' FWL.  
 BOTTOM HOLE AT 660' FSL & 1980' FWL.  
 BOA 35-23 TO BE AT 1502' FSL, 1030' FWL.  
 BOTTOM HOLE AT 50' FSL & 1305' FWL.  
 HELEN 14-23 TO BE AT 1502' FSL, 980' FWL.  
 HELEN E UNIT 2 IS 1454' FSL, 973' FWL.



## REVISIONS

| INITIAL | DATE     |
|---------|----------|
| SMF     | 09-14-09 |
|         |          |
|         |          |
|         |          |
|         |          |

PREPARED BY:

**PFS**

Petroleum Field Services, LLC  
1801 W. 13th Ave.  
Denver, CO 80204



KERR-MCGEE OIL & GAS ONSHORE LP

FIELD DATE:  
07-24-09

DRAWING DATE:  
07-30-09

BY:  
SMF

PAD NAME:  
BOA 2 PAD

SURFACE LOCATION:

BROOMFIELD COUNTY, COLORADO  
NW 1/4 SW 1/4, SEC. 23, T1N, R68W