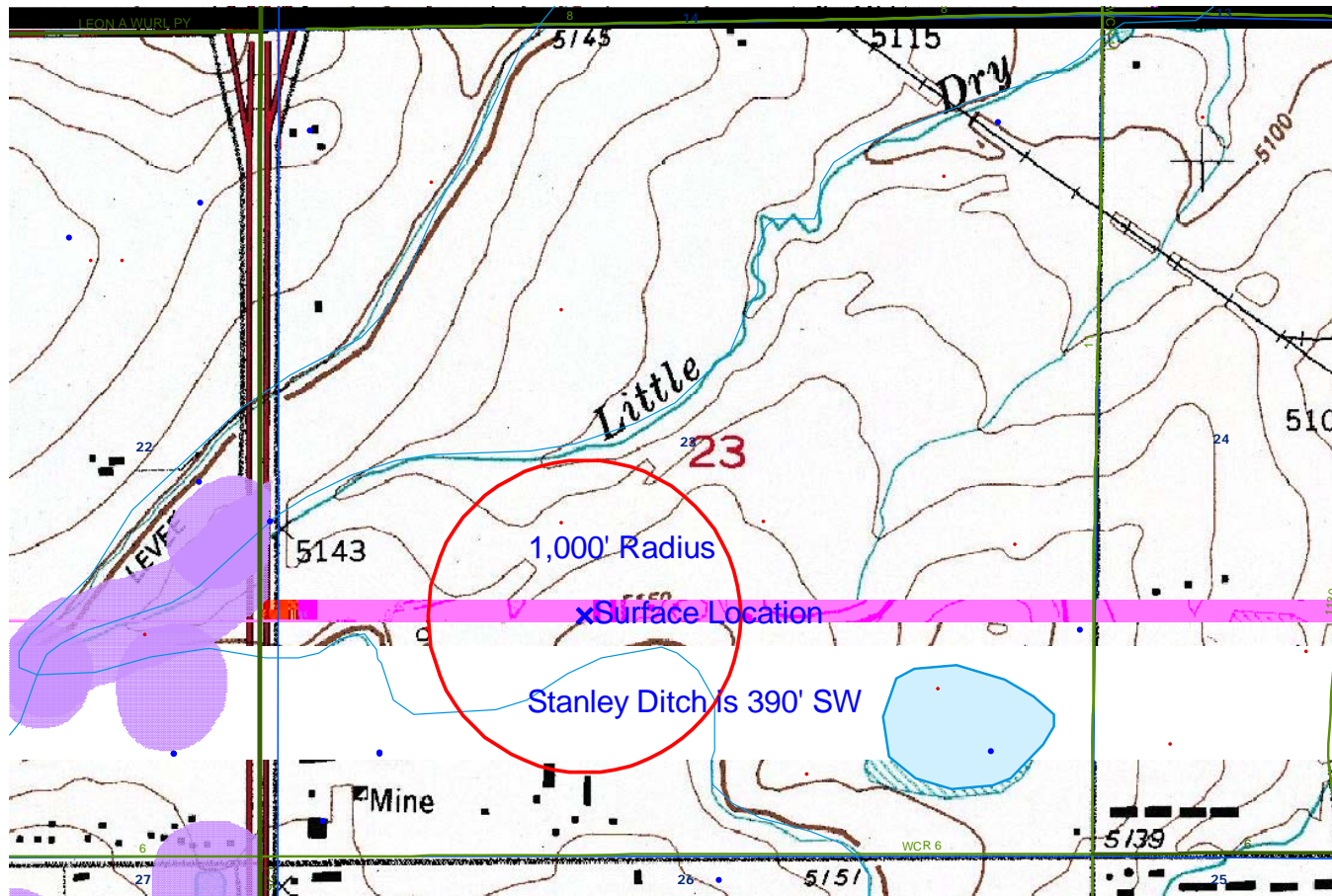


BOA 14-23

TOPO

HYDROLOGY MAP-A



TOWNSHIP 1 NORTH, RANGE 68 WEST

SCALE

Diameter = 2,000 feet

## LEGEND A

## WATER RESOURCES

- Water Wells
- Lakes
- Major Rivers
- Streams
- 300-Foot Stream Buffers

## LEGEND B

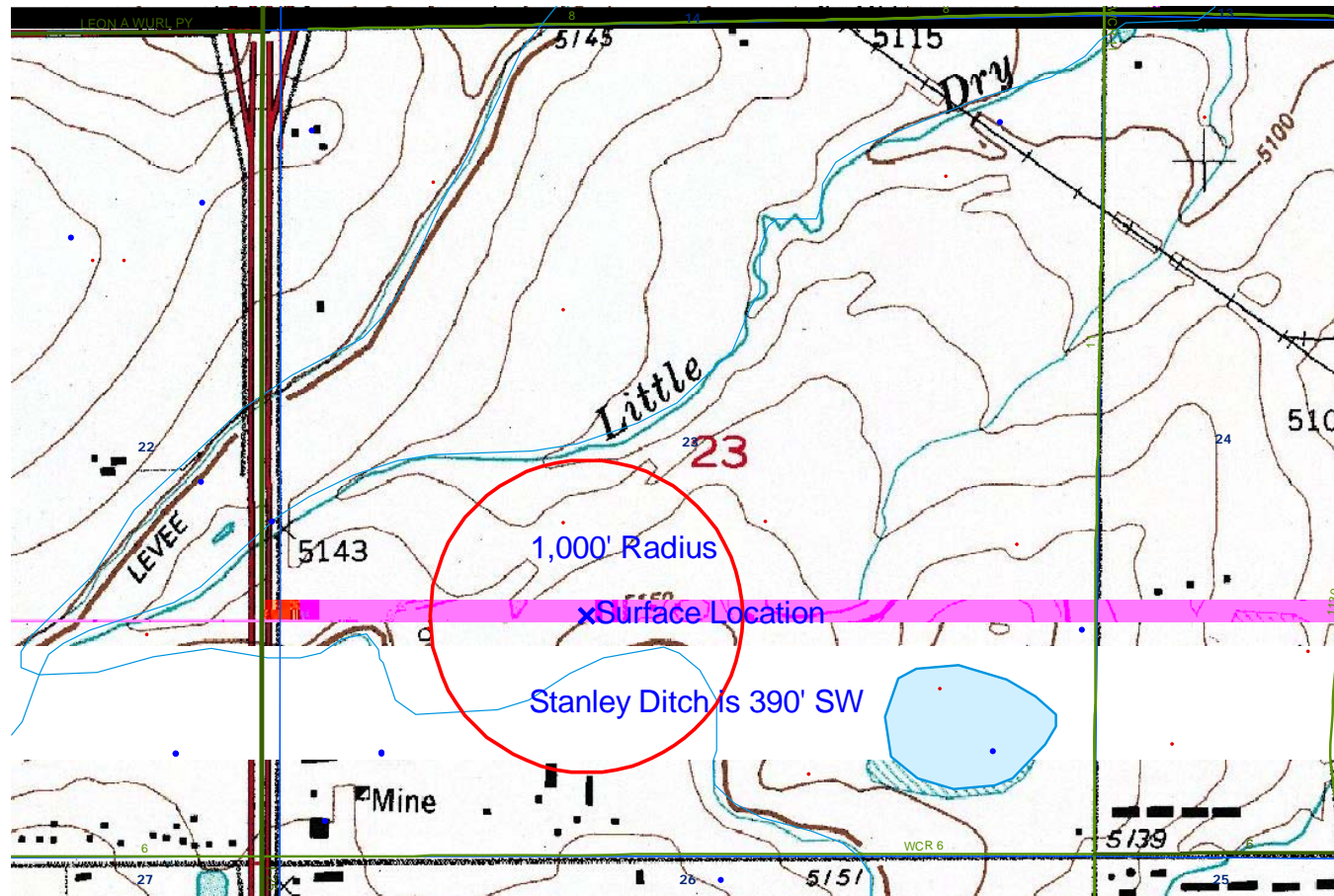
## 1200-SEARIES WILDLIFE AREAS

- RSO Areas
- RSO\_Osprey\_Curren
- SWH Areas
- State Wildlife Areas

BOA 14-23

TOPO

HYDROLOGY MAP-B-



TOWNSHIP 1 NORTH, RANGE 68 WEST

SCALE



Diameter = 2,000 feet

## LEGEND A

## WATER RESOURCES

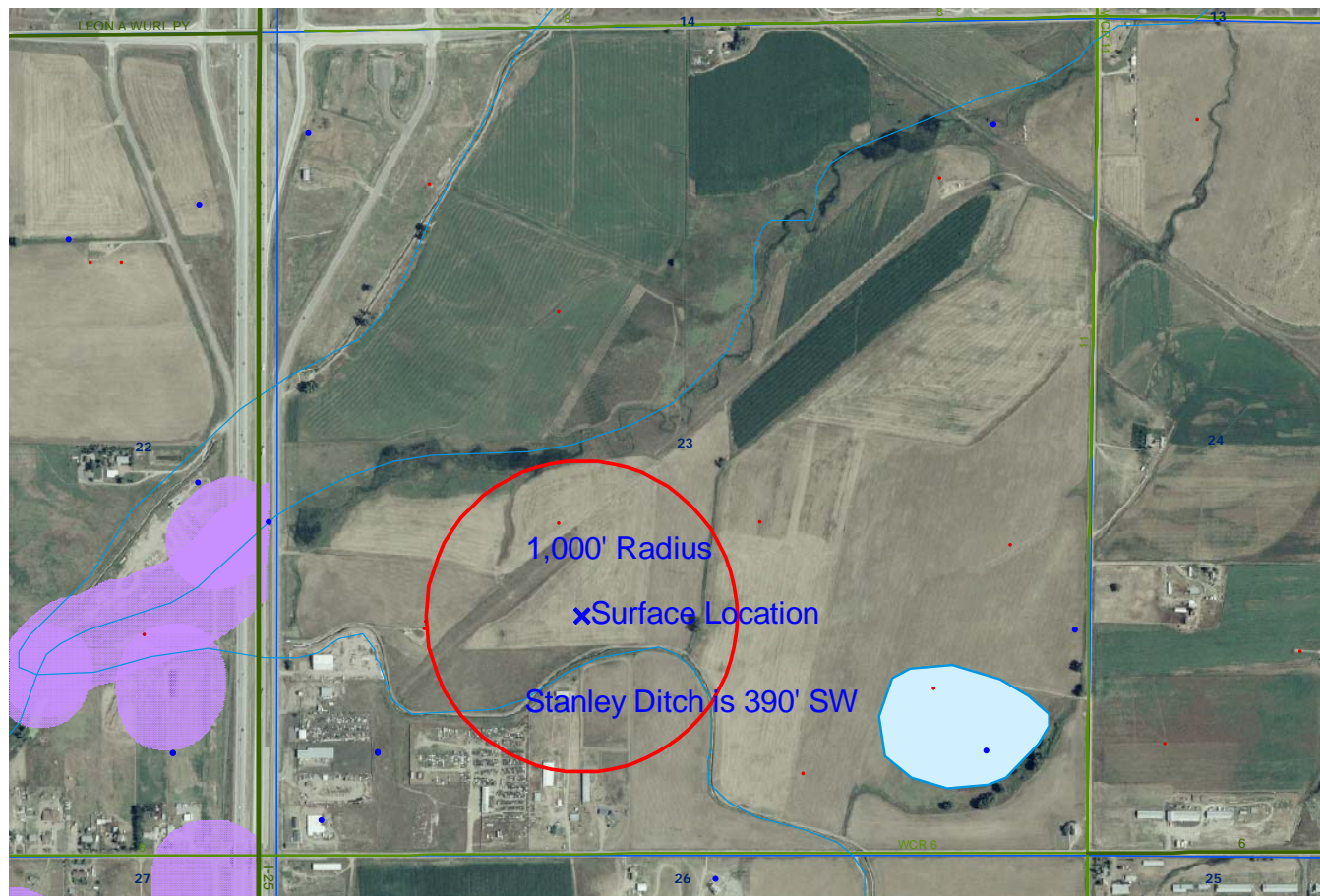
- Water Wells
- Lakes
- Major Rivers
- Streams
- 300-Foot Stream Buffers

## LEGEND B

## 1200-SEARIES WILDLIFE AREAS


- RSO Areas
- RSO\_Osprey\_Curren
- SWH Areas
- State Wildlife Areas





TOWNSHIP 1 NORTH, RANGE 68 WEST

SCALE

 Diameter = 2,000 feet

## LEGEND A

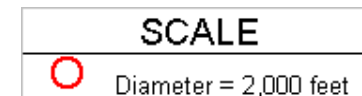
## WATER RESOURCES

- Water Wells
- Lakes
- Major Rivers
- Streams
- 300-Foot Stream Buffers

## LEGEND B

## 1200-SEARIES WILDLIFE AREAS

- RSO Areas
- RSO\_Osprey\_Curren
- SWH Areas
- State Wildlife Areas



LEGEND A	LEGEND B
WATER RESOURCES	1200-SEARIES WILDLIFE AREAS
Water Wells	RSO Areas
Lakes	RSO_Osprey_Curren
Major Rivers	SWH Areas
Streams	State Wildlife Areas
300-Foot Stream Buffers	