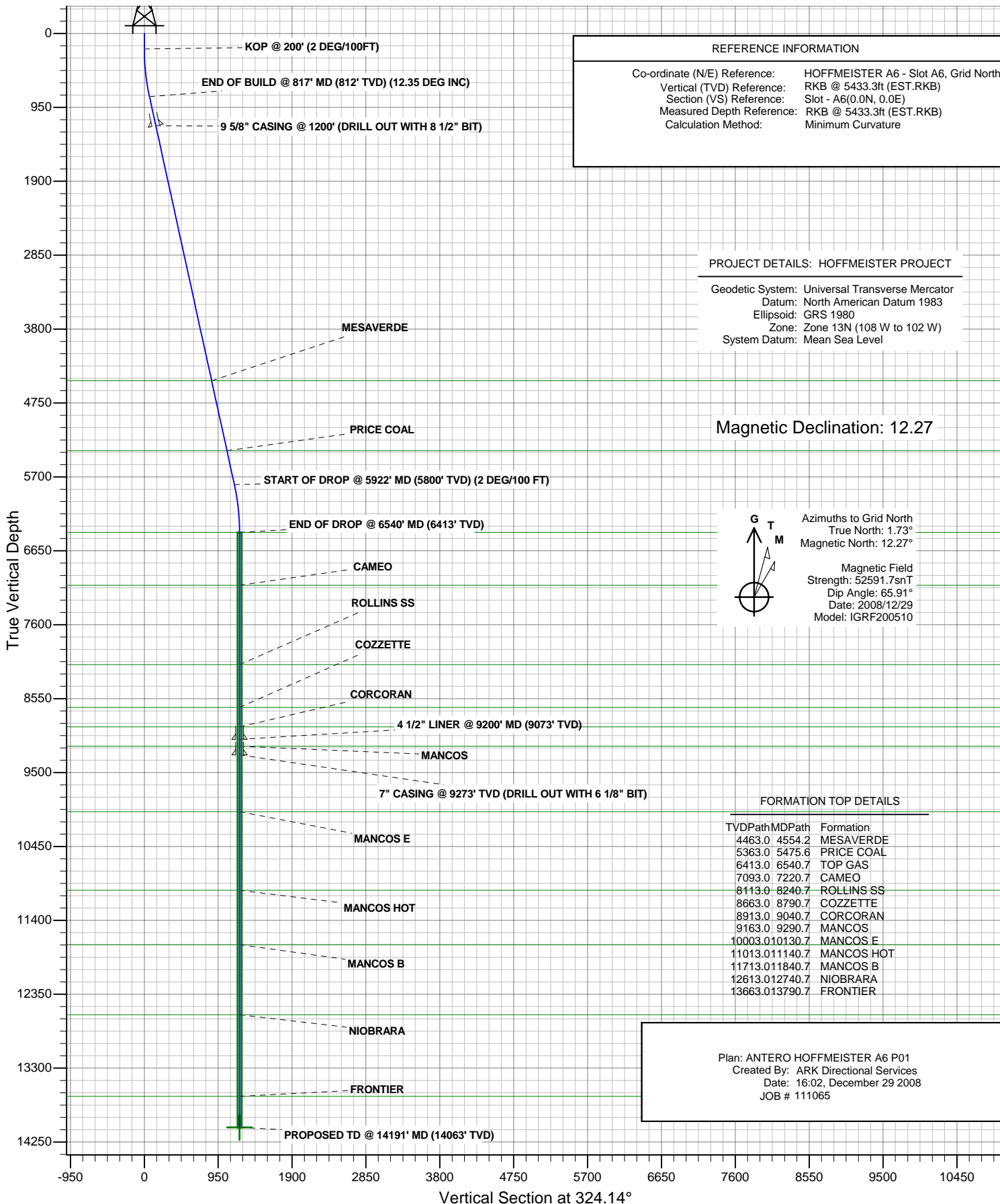




ANTERO RESOURCES

ANTERO HOFFMEISTER A6



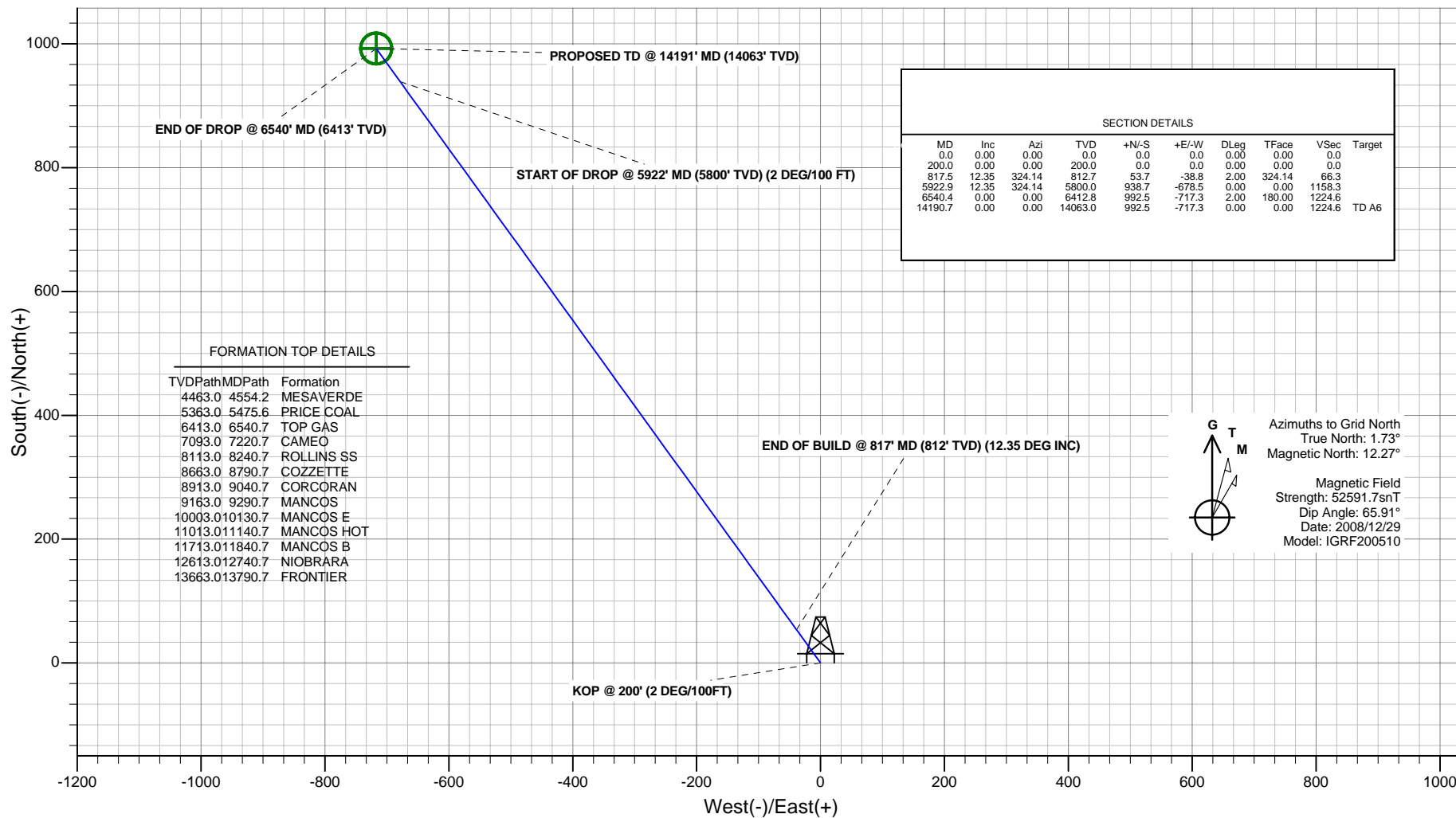


ANTERO RESOURCES

Project: HOFFMEISTER PROJECT
Site: FRONTIER 3
Well: HOFFMEISTER A6 (111065)
Wellbore: ANTERO HOFFMEISTER A6
Design: ANTERO HOFFMEISTER A6 P01
JOB # 111065



PLAN VIEW



PROJECT DETAILS: HOFFMEISTER PROJECT

Geodetic System: Universal Transverse Mercator
Datum: North American Datum 1983
Ellipsoid: GRS 1980
Zone: Zone 13N (108 W to 102 W)
System Datum: Mean Sea Level

REFERENCE INFORMATION

Co-ordinate (N/E) Reference: Well HOFFMEISTER A6 - Slot A6, Grid North
Vertical (TVD) Reference: RKB @ 5433.3ft (EST.RKB)
Section (VS) Reference: Slot - A6(0.0N, 0.0E)
Measured Depth Reference: RKB @ 5433.3ft (EST.RKB)
Calculation Method: Minimum Curvature

Plan: ANTERO HOFFMEISTER A6 P01
Created By: ARK Directional Services
Date: 16:11, December 29 2008

ANTERO RESOURCES

HOFFMEISTER PROJECT

FRONTIER 3

HOFFMEISTER A6

Plan: ANTERO HOFFMEISTER A6 P01

Standard Planning Report

29 December, 2008

Planning Report

Database:	EDMDB	Local Co-ordinate Reference:	Well HOFFMEISTER A6 (111065) - Slot A6
Company:	ANTERO RESOURCES	TVD Reference:	RKB @ 5433.3ft (EST.RKB)
Project:	HOFFMEISTER PROJECT	MD Reference:	RKB @ 5433.3ft (EST.RKB)
Site:	FRONTIER 3	North Reference:	Grid
Well:	HOFFMEISTER A6 (111065)	Survey Calculation Method:	Minimum Curvature
Wellbore:	ANTERO HOFFMEISTER A6		
Design:	ANTERO HOFFMEISTER A6 P01		

Project	HOFFMEISTER PROJECT		
Map System:	Universal Transverse Mercator	System Datum:	Mean Sea Level
Geo Datum:	North American Datum 1983		
Map Zone:	Zone 13N (108 W to 102 W)		

Site		FRONTIER 3			
Site Position:		Northing:	14,373,498.18 ft	Latitude:	39° 32' 50.229 N
From:	Map	Easting:	873,085.41 ft	Longitude:	107° 43' 18.781 W
Position Uncertainty:	0.0 ft	Slot Radius:	in	Grid Convergence:	-1.73 °

Well	HOFFMEISTER A6 (111065) - Slot A6					
Well Position	+N/-S	0.0 ft	Northing:	14,373,498.16 ft	Latitude:	39° 32' 50.224 N
	+E/-W	-15.0 ft	Easting:	873,070.41 ft	Longitude:	107° 43' 18.972 W
Position Uncertainty		0.0 ft	Wellhead Elevation:	ft	Ground Level:	5,411.3 ft

Wellbore	ANTERO HOFFMEISTER A6				
Magnetics	Model Name	Sample Date	Declination (°)	Dip Angle (°)	Field Strength (nT)
	IGRF200510	2008/12/29	10.53	65.91	52,592

Design	ANTERO HOFFMEISTER A6 P01			
Audit Notes:				
Version:	Phase:	PROTOTYPE	Tie On Depth:	0.0
Vertical Section:	Depth From (TVD) (ft)	+N/-S (ft)	+E/-W (ft)	Direction (°)
	0.0	0.0	0.0	324.14

Plan Sections										
Measured Depth (ft)	Inclination (°)	Azimuth (°)	Vertical Depth (ft)	+N/-S (ft)	+E/-W (ft)	Dogleg Rate (°/100ft)	Build Rate (°/100ft)	Turn Rate (°/100ft)	TFO (°)	Target
0.0	0.00	0.00	0.0	0.0	0.0	0.00	0.00	0.00	0.00	
200.0	0.00	0.00	200.0	0.0	0.0	0.00	0.00	0.00	0.00	
817.5	12.35	324.14	812.7	53.7	-38.8	2.00	2.00	0.00	324.14	
5,922.9	12.35	324.14	5,800.0	938.7	-678.5	0.00	0.00	0.00	0.00	
6,540.4	0.00	0.00	6,412.8	992.5	-717.3	2.00	-2.00	0.00	180.00	
14,190.7	0.00	0.00	14,063.0	992.5	-717.3	0.00	0.00	0.00	0.00	TD A6

Planning Report

Database:	EDMDB	Local Co-ordinate Reference:	Well HOFFMEISTER A6 (111065) - Slot A6
Company:	ANTERO RESOURCES	TVD Reference:	RKB @ 5433.3ft (EST.RKB)
Project:	HOFFMEISTER PROJECT	MD Reference:	RKB @ 5433.3ft (EST.RKB)
Site:	FRONTIER 3	North Reference:	Grid
Well:	HOFFMEISTER A6 (111065)	Survey Calculation Method:	Minimum Curvature
Wellbore:	ANTERO HOFFMEISTER A6		
Design:	ANTERO HOFFMEISTER A6 P01		

Planned Survey									
Measured Depth (ft)	Inclination (°)	Azimuth (°)	Vertical Depth (ft)	+N/-S (ft)	+E/-W (ft)	Vertical Section (ft)	Dogleg Rate (°/100ft)	Build Rate (°/100ft)	Turn Rate (°/100ft)
0.0	0.00	0.00	0.0	0.0	0.0	0.0	0.00	0.00	0.00
100.0	0.00	0.00	100.0	0.0	0.0	0.0	0.00	0.00	0.00
200.0	0.00	0.00	200.0	0.0	0.0	0.0	0.00	0.00	0.00
KOP @ 200' (2 DEG/100FT)									
300.0	2.00	324.14	300.0	1.4	-1.0	1.7	2.00	2.00	0.00
400.0	4.00	324.14	399.8	5.7	-4.1	7.0	2.00	2.00	0.00
500.0	6.00	324.14	499.5	12.7	-9.2	15.7	2.00	2.00	0.00
600.0	8.00	324.14	598.7	22.6	-16.3	27.9	2.00	2.00	0.00
700.0	10.00	324.14	697.5	35.3	-25.5	43.5	2.00	2.00	0.00
800.0	12.00	324.14	795.6	50.7	-36.7	62.6	2.00	2.00	0.00
817.5	12.35	324.14	812.7	53.7	-38.8	66.3	2.00	2.00	0.00
END OF BUILD @ 817' MD (812' TVD) (12.35 DEG INC)									
900.0	12.35	324.14	893.3	68.0	-49.2	83.9	0.00	0.00	0.00
1,000.0	12.35	324.14	991.0	85.4	-61.7	105.3	0.00	0.00	0.00
1,100.0	12.35	324.14	1,088.7	102.7	-74.2	126.7	0.00	0.00	0.00
1,200.0	12.35	324.14	1,186.4	120.0	-86.8	148.1	0.00	0.00	0.00
9 5/8" CASING @ 1200' (DRILL OUT WITH 8 1/2" BIT)									
1,300.0	12.35	324.14	1,284.1	137.4	-99.3	169.5	0.00	0.00	0.00
1,400.0	12.35	324.14	1,381.8	154.7	-111.8	190.9	0.00	0.00	0.00
1,500.0	12.35	324.14	1,479.4	172.0	-124.3	212.3	0.00	0.00	0.00
1,600.0	12.35	324.14	1,577.1	189.4	-136.9	233.7	0.00	0.00	0.00
1,700.0	12.35	324.14	1,674.8	206.7	-149.4	255.0	0.00	0.00	0.00
1,800.0	12.35	324.14	1,772.5	224.0	-161.9	276.4	0.00	0.00	0.00
1,900.0	12.35	324.14	1,870.2	241.4	-174.5	297.8	0.00	0.00	0.00
2,000.0	12.35	324.14	1,967.9	258.7	-187.0	319.2	0.00	0.00	0.00
2,100.0	12.35	324.14	2,065.6	276.0	-199.5	340.6	0.00	0.00	0.00
2,200.0	12.35	324.14	2,163.2	293.4	-212.0	362.0	0.00	0.00	0.00
2,300.0	12.35	324.14	2,260.9	310.7	-224.6	383.4	0.00	0.00	0.00
2,400.0	12.35	324.14	2,358.6	328.1	-237.1	404.8	0.00	0.00	0.00
2,500.0	12.35	324.14	2,456.3	345.4	-249.6	426.2	0.00	0.00	0.00
2,600.0	12.35	324.14	2,554.0	362.7	-262.2	447.5	0.00	0.00	0.00
2,700.0	12.35	324.14	2,651.7	380.1	-274.7	468.9	0.00	0.00	0.00
2,800.0	12.35	324.14	2,749.4	397.4	-287.2	490.3	0.00	0.00	0.00
2,900.0	12.35	324.14	2,847.0	414.7	-299.7	511.7	0.00	0.00	0.00
3,000.0	12.35	324.14	2,944.7	432.1	-312.3	533.1	0.00	0.00	0.00
3,100.0	12.35	324.14	3,042.4	449.4	-324.8	554.5	0.00	0.00	0.00
3,200.0	12.35	324.14	3,140.1	466.7	-337.3	575.9	0.00	0.00	0.00
3,300.0	12.35	324.14	3,237.8	484.1	-349.9	597.3	0.00	0.00	0.00
3,400.0	12.35	324.14	3,335.5	501.4	-362.4	618.6	0.00	0.00	0.00
3,500.0	12.35	324.14	3,433.2	518.7	-374.9	640.0	0.00	0.00	0.00
3,600.0	12.35	324.14	3,530.8	536.1	-387.4	661.4	0.00	0.00	0.00
3,700.0	12.35	324.14	3,628.5	553.4	-400.0	682.8	0.00	0.00	0.00
3,800.0	12.35	324.14	3,726.2	570.7	-412.5	704.2	0.00	0.00	0.00
3,900.0	12.35	324.14	3,823.9	588.1	-425.0	725.6	0.00	0.00	0.00
4,000.0	12.35	324.14	3,921.6	605.4	-437.6	747.0	0.00	0.00	0.00
4,100.0	12.35	324.14	4,019.3	622.7	-450.1	768.4	0.00	0.00	0.00
4,200.0	12.35	324.14	4,117.0	640.1	-462.6	789.8	0.00	0.00	0.00
4,300.0	12.35	324.14	4,214.6	657.4	-475.1	811.1	0.00	0.00	0.00
4,400.0	12.35	324.14	4,312.3	674.7	-487.7	832.5	0.00	0.00	0.00
4,500.0	12.35	324.14	4,410.0	692.1	-500.2	853.9	0.00	0.00	0.00
4,554.2	12.35	324.14	4,463.0	701.5	-507.0	865.5	0.00	0.00	0.00
MESAVERDE									
4,600.0	12.35	324.14	4,507.7	709.4	-512.7	875.3	0.00	0.00	0.00
4,700.0	12.35	324.14	4,605.4	726.8	-525.3	896.7	0.00	0.00	0.00

Planning Report

Database:	EDMDB	Local Co-ordinate Reference:	Well HOFFMEISTER A6 (111065) - Slot A6
Company:	ANTERO RESOURCES	TVD Reference:	RKB @ 5433.3ft (EST.RKB)
Project:	HOFFMEISTER PROJECT	MD Reference:	RKB @ 5433.3ft (EST.RKB)
Site:	FRONTIER 3	North Reference:	Grid
Well:	HOFFMEISTER A6 (111065)	Survey Calculation Method:	Minimum Curvature
Wellbore:	ANTERO HOFFMEISTER A6		
Design:	ANTERO HOFFMEISTER A6 P01		

Planned Survey									
Measured Depth (ft)	Inclination (°)	Azimuth (°)	Vertical Depth (ft)	+N/-S (ft)	+E/-W (ft)	Vertical Section (ft)	Dogleg Rate (°/100ft)	Build Rate (°/100ft)	Turn Rate (°/100ft)
4,800.0	12.35	324.14	4,703.1	744.1	-537.8	918.1	0.00	0.00	0.00
4,900.0	12.35	324.14	4,800.8	761.4	-550.3	939.5	0.00	0.00	0.00
5,000.0	12.35	324.14	4,898.4	778.8	-562.8	960.9	0.00	0.00	0.00
5,100.0	12.35	324.14	4,996.1	796.1	-575.4	982.2	0.00	0.00	0.00
5,200.0	12.35	324.14	5,093.8	813.4	-587.9	1,003.6	0.00	0.00	0.00
5,300.0	12.35	324.14	5,191.5	830.8	-600.4	1,025.0	0.00	0.00	0.00
5,400.0	12.35	324.14	5,289.2	848.1	-613.0	1,046.4	0.00	0.00	0.00
5,475.6	12.35	324.14	5,363.0	861.2	-622.4	1,062.6	0.00	0.00	0.00
PRICE COAL									
5,500.0	12.35	324.14	5,386.9	865.4	-625.5	1,067.8	0.00	0.00	0.00
5,600.0	12.35	324.14	5,484.6	882.8	-638.0	1,089.2	0.00	0.00	0.00
5,700.0	12.35	324.14	5,582.2	900.1	-650.5	1,110.6	0.00	0.00	0.00
5,800.0	12.35	324.14	5,679.9	917.4	-663.1	1,132.0	0.00	0.00	0.00
5,900.0	12.35	324.14	5,777.6	934.8	-675.6	1,153.4	0.00	0.00	0.00
5,922.9	12.35	324.14	5,800.0	938.7	-678.5	1,158.3	0.00	0.00	0.00
START OF DROP @ 5922' MD (5800' TVD) (2 DEG/100 FT)									
6,000.0	10.81	324.14	5,875.5	951.3	-687.5	1,173.7	2.00	-2.00	0.00
6,100.0	8.81	324.14	5,974.0	965.1	-697.5	1,190.8	2.00	-2.00	0.00
6,200.0	6.81	324.14	6,073.1	976.1	-705.5	1,204.3	2.00	-2.00	0.00
6,300.0	4.81	324.14	6,172.6	984.3	-711.4	1,214.5	2.00	-2.00	0.00
6,400.0	2.81	324.14	6,272.4	989.7	-715.3	1,221.1	2.00	-2.00	0.00
6,500.0	0.81	324.14	6,372.3	992.2	-717.1	1,224.3	2.00	-2.00	0.00
6,540.4	0.00	324.14	6,412.7	992.5	-717.3	1,224.6	2.00	-2.00	0.00
END OF DROP @ 6540' MD (6413' TVD)									
6,540.7	0.00	0.00	6,413.0	992.5	-717.3	1,224.6	0.26	-0.26	0.00
TOP GAS									
6,600.0	0.00	0.00	6,472.3	992.5	-717.3	1,224.6	0.00	0.00	0.00
6,700.0	0.00	0.00	6,572.3	992.5	-717.3	1,224.6	0.00	0.00	0.00
6,800.0	0.00	0.00	6,672.3	992.5	-717.3	1,224.6	0.00	0.00	0.00
6,900.0	0.00	0.00	6,772.3	992.5	-717.3	1,224.6	0.00	0.00	0.00
7,000.0	0.00	0.00	6,872.3	992.5	-717.3	1,224.6	0.00	0.00	0.00
7,100.0	0.00	0.00	6,972.3	992.5	-717.3	1,224.6	0.00	0.00	0.00
7,200.0	0.00	0.00	7,072.3	992.5	-717.3	1,224.6	0.00	0.00	0.00
7,220.7	0.00	0.00	7,093.0	992.5	-717.3	1,224.6	0.00	0.00	0.00
CAMEO									
7,300.0	0.00	0.00	7,172.3	992.5	-717.3	1,224.6	0.00	0.00	0.00
7,400.0	0.00	0.00	7,272.3	992.5	-717.3	1,224.6	0.00	0.00	0.00
7,500.0	0.00	0.00	7,372.3	992.5	-717.3	1,224.6	0.00	0.00	0.00
7,600.0	0.00	0.00	7,472.3	992.5	-717.3	1,224.6	0.00	0.00	0.00
7,700.0	0.00	0.00	7,572.3	992.5	-717.3	1,224.6	0.00	0.00	0.00
7,800.0	0.00	0.00	7,672.3	992.5	-717.3	1,224.6	0.00	0.00	0.00
7,900.0	0.00	0.00	7,772.3	992.5	-717.3	1,224.6	0.00	0.00	0.00
8,000.0	0.00	0.00	7,872.3	992.5	-717.3	1,224.6	0.00	0.00	0.00
8,100.0	0.00	0.00	7,972.3	992.5	-717.3	1,224.6	0.00	0.00	0.00
8,200.0	0.00	0.00	8,072.3	992.5	-717.3	1,224.6	0.00	0.00	0.00
8,240.7	0.00	0.00	8,113.0	992.5	-717.3	1,224.6	0.00	0.00	0.00
ROLLINS SS									
8,300.0	0.00	0.00	8,172.3	992.5	-717.3	1,224.6	0.00	0.00	0.00
8,400.0	0.00	0.00	8,272.3	992.5	-717.3	1,224.6	0.00	0.00	0.00
8,500.0	0.00	0.00	8,372.3	992.5	-717.3	1,224.6	0.00	0.00	0.00
8,600.0	0.00	0.00	8,472.3	992.5	-717.3	1,224.6	0.00	0.00	0.00
8,700.0	0.00	0.00	8,572.3	992.5	-717.3	1,224.6	0.00	0.00	0.00
8,790.7	0.00	0.00	8,663.0	992.5	-717.3	1,224.6	0.00	0.00	0.00

Planning Report

Database:	EDMDB	Local Co-ordinate Reference:	Well HOFFMEISTER A6 (111065) - Slot A6
Company:	ANTERO RESOURCES	TVD Reference:	RKB @ 5433.3ft (EST.RKB)
Project:	HOFFMEISTER PROJECT	MD Reference:	RKB @ 5433.3ft (EST.RKB)
Site:	FRONTIER 3	North Reference:	Grid
Well:	HOFFMEISTER A6 (111065)	Survey Calculation Method:	Minimum Curvature
Wellbore:	ANTERO HOFFMEISTER A6		
Design:	ANTERO HOFFMEISTER A6 P01		

Planned Survey									
Measured Depth (ft)	Inclination (°)	Azimuth (°)	Vertical Depth (ft)	+N/-S (ft)	+E/-W (ft)	Vertical Section (ft)	Dogleg Rate (°/100ft)	Build Rate (°/100ft)	Turn Rate (°/100ft)
COZZETTE									
8,800.0	0.00	0.00	8,672.3	992.5	-717.3	1,224.6	0.00	0.00	0.00
8,900.0	0.00	0.00	8,772.3	992.5	-717.3	1,224.6	0.00	0.00	0.00
9,000.0	0.00	0.00	8,872.3	992.5	-717.3	1,224.6	0.00	0.00	0.00
9,040.7	0.00	0.00	8,913.0	992.5	-717.3	1,224.6	0.00	0.00	0.00
CORCORAN									
9,100.0	0.00	0.00	8,972.3	992.5	-717.3	1,224.6	0.00	0.00	0.00
9,200.0	0.00	0.00	9,072.3	992.5	-717.3	1,224.6	0.00	0.00	0.00
9,200.7	0.00	0.00	9,073.0	992.5	-717.3	1,224.6	0.00	0.00	0.00
4 1/2" LINER @ 9200' MD (9073' TVD)									
9,290.7	0.00	0.00	9,163.0	992.5	-717.3	1,224.6	0.00	0.00	0.00
MANCOS									
9,300.0	0.00	0.00	9,172.3	992.5	-717.3	1,224.6	0.00	0.00	0.00
9,400.0	0.00	0.00	9,272.3	992.5	-717.3	1,224.6	0.00	0.00	0.00
9,400.7	0.00	0.00	9,273.0	992.5	-717.3	1,224.6	0.00	0.00	0.00
7" CASING @ 9273' TVD (DRILL OUT WITH 6 1/8" BIT)									
9,500.0	0.00	0.00	9,372.3	992.5	-717.3	1,224.6	0.00	0.00	0.00
9,600.0	0.00	0.00	9,472.3	992.5	-717.3	1,224.6	0.00	0.00	0.00
9,700.0	0.00	0.00	9,572.3	992.5	-717.3	1,224.6	0.00	0.00	0.00
9,800.0	0.00	0.00	9,672.3	992.5	-717.3	1,224.6	0.00	0.00	0.00
9,900.0	0.00	0.00	9,772.3	992.5	-717.3	1,224.6	0.00	0.00	0.00
10,000.0	0.00	0.00	9,872.3	992.5	-717.3	1,224.6	0.00	0.00	0.00
10,100.0	0.00	0.00	9,972.3	992.5	-717.3	1,224.6	0.00	0.00	0.00
10,130.7	0.00	0.00	10,003.0	992.5	-717.3	1,224.6	0.00	0.00	0.00
MANCOS E									
10,200.0	0.00	0.00	10,072.3	992.5	-717.3	1,224.6	0.00	0.00	0.00
10,300.0	0.00	0.00	10,172.3	992.5	-717.3	1,224.6	0.00	0.00	0.00
10,400.0	0.00	0.00	10,272.3	992.5	-717.3	1,224.6	0.00	0.00	0.00
10,500.0	0.00	0.00	10,372.3	992.5	-717.3	1,224.6	0.00	0.00	0.00
10,600.0	0.00	0.00	10,472.3	992.5	-717.3	1,224.6	0.00	0.00	0.00
10,700.0	0.00	0.00	10,572.3	992.5	-717.3	1,224.6	0.00	0.00	0.00
10,800.0	0.00	0.00	10,672.3	992.5	-717.3	1,224.6	0.00	0.00	0.00
10,900.0	0.00	0.00	10,772.3	992.5	-717.3	1,224.6	0.00	0.00	0.00
11,000.0	0.00	0.00	10,872.3	992.5	-717.3	1,224.6	0.00	0.00	0.00
11,100.0	0.00	0.00	10,972.3	992.5	-717.3	1,224.6	0.00	0.00	0.00
11,140.7	0.00	0.00	11,013.0	992.5	-717.3	1,224.6	0.00	0.00	0.00
MANCOS HOT									
11,200.0	0.00	0.00	11,072.3	992.5	-717.3	1,224.6	0.00	0.00	0.00
11,300.0	0.00	0.00	11,172.3	992.5	-717.3	1,224.6	0.00	0.00	0.00
11,400.0	0.00	0.00	11,272.3	992.5	-717.3	1,224.6	0.00	0.00	0.00
11,500.0	0.00	0.00	11,372.3	992.5	-717.3	1,224.6	0.00	0.00	0.00
11,600.0	0.00	0.00	11,472.3	992.5	-717.3	1,224.6	0.00	0.00	0.00
11,700.0	0.00	0.00	11,572.3	992.5	-717.3	1,224.6	0.00	0.00	0.00
11,800.0	0.00	0.00	11,672.3	992.5	-717.3	1,224.6	0.00	0.00	0.00
11,840.7	0.00	0.00	11,713.0	992.5	-717.3	1,224.6	0.00	0.00	0.00
MANCOS B									
11,900.0	0.00	0.00	11,772.3	992.5	-717.3	1,224.6	0.00	0.00	0.00
12,000.0	0.00	0.00	11,872.3	992.5	-717.3	1,224.6	0.00	0.00	0.00
12,100.0	0.00	0.00	11,972.3	992.5	-717.3	1,224.6	0.00	0.00	0.00
12,200.0	0.00	0.00	12,072.3	992.5	-717.3	1,224.6	0.00	0.00	0.00
12,300.0	0.00	0.00	12,172.3	992.5	-717.3	1,224.6	0.00	0.00	0.00
12,400.0	0.00	0.00	12,272.3	992.5	-717.3	1,224.6	0.00	0.00	0.00
12,500.0	0.00	0.00	12,372.3	992.5	-717.3	1,224.6	0.00	0.00	0.00

Planning Report

Database:	EDMDB	Local Co-ordinate Reference:	Well HOFFMEISTER A6 (111065) - Slot A6
Company:	ANTERO RESOURCES	TVD Reference:	RKB @ 5433.3ft (EST.RKB)
Project:	HOFFMEISTER PROJECT	MD Reference:	RKB @ 5433.3ft (EST.RKB)
Site:	FRONTIER 3	North Reference:	Grid
Well:	HOFFMEISTER A6 (111065)	Survey Calculation Method:	Minimum Curvature
Wellbore:	ANTERO HOFFMEISTER A6		
Design:	ANTERO HOFFMEISTER A6 P01		

Planned Survey									
Measured Depth (ft)	Inclination (°)	Azimuth (°)	Vertical Depth (ft)	+N/-S (ft)	+E/-W (ft)	Vertical Section (ft)	Dogleg Rate (°/100ft)	Build Rate (°/100ft)	Turn Rate (°/100ft)
12,600.0	0.00	0.00	12,472.3	992.5	-717.3	1,224.6	0.00	0.00	0.00
12,700.0	0.00	0.00	12,572.3	992.5	-717.3	1,224.6	0.00	0.00	0.00
12,740.7	0.00	0.00	12,613.0	992.5	-717.3	1,224.6	0.00	0.00	0.00
NIOBRARA									
12,800.0	0.00	0.00	12,672.3	992.5	-717.3	1,224.6	0.00	0.00	0.00
12,900.0	0.00	0.00	12,772.3	992.5	-717.3	1,224.6	0.00	0.00	0.00
13,000.0	0.00	0.00	12,872.3	992.5	-717.3	1,224.6	0.00	0.00	0.00
13,100.0	0.00	0.00	12,972.3	992.5	-717.3	1,224.6	0.00	0.00	0.00
13,200.0	0.00	0.00	13,072.3	992.5	-717.3	1,224.6	0.00	0.00	0.00
13,300.0	0.00	0.00	13,172.3	992.5	-717.3	1,224.6	0.00	0.00	0.00
13,400.0	0.00	0.00	13,272.3	992.5	-717.3	1,224.6	0.00	0.00	0.00
13,500.0	0.00	0.00	13,372.3	992.5	-717.3	1,224.6	0.00	0.00	0.00
13,600.0	0.00	0.00	13,472.3	992.5	-717.3	1,224.6	0.00	0.00	0.00
13,700.0	0.00	0.00	13,572.3	992.5	-717.3	1,224.6	0.00	0.00	0.00
13,790.7	0.00	0.00	13,663.0	992.5	-717.3	1,224.6	0.00	0.00	0.00
FRONTIER									
13,800.0	0.00	0.00	13,672.3	992.5	-717.3	1,224.6	0.00	0.00	0.00
13,900.0	0.00	0.00	13,772.3	992.5	-717.3	1,224.6	0.00	0.00	0.00
14,000.0	0.00	0.00	13,872.3	992.5	-717.3	1,224.6	0.00	0.00	0.00
14,100.0	0.00	0.00	13,972.3	992.5	-717.3	1,224.6	0.00	0.00	0.00
14,190.7	0.00	0.00	14,063.0	992.5	-717.3	1,224.6	0.00	0.00	0.00
TD A6									

Design Targets									
Target Name	Dip Angle (°)	Dip Dir. (°)	TVD (ft)	+N/-S (ft)	+E/-W (ft)	Northing (ft)	Easting (ft)	Latitude	Longitude
TD A6	0.00	360.00	14,063.0	992.5	-717.3	14,374,490.64	872,353.11	39° 32' 59.811 N	107° 43' 28.506 W
- hit/miss target									
- Shape									
- plan hits target									
- Circle (radius 25.0)									

Casing Points					
Measured Depth (ft)	Vertical Depth (ft)	Name	Casing Diameter (in)	Hole Diameter (in)	
1,200.0	1,186.4	9 5/8" CASING @ 1200' (DRILL OUT WITH 8 1/2" BIT)	9.62	12.25	
9,400.	9,273.	7" CASING @ 9273' TVD (DRILL OUT WITH 6 1/8" BIT)	5.5	6.00	
9,200.7	9,073.0	4 1/2" LINER @ 9200' MD (9073' TVD)	5.50	6.00	

Planning Report

Database:	EDMDB	Local Co-ordinate Reference:	Well HOFFMEISTER A6 (111065) - Slot A6
Company:	ANTERO RESOURCES	TVD Reference:	RKB @ 5433.3ft (EST.RKB)
Project:	HOFFMEISTER PROJECT	MD Reference:	RKB @ 5433.3ft (EST.RKB)
Site:	FRONTIER 3	North Reference:	Grid
Well:	HOFFMEISTER A6 (111065)	Survey Calculation Method:	Minimum Curvature
Wellbore:	ANTERO HOFFMEISTER A6		
Design:	ANTERO HOFFMEISTER A6 P01		

Formations						
Measured Depth (ft)	Vertical Depth (ft)	Name	Lithology	Dip (°)	Dip Direction (°)	
4,554.2	4,463.0	MESAVERDE		0.00		
5,475.6	5,363.0	PRICE COAL		0.00		
6,540.7	6,413.0	TOP GAS		0.00		
7,220.7	7,093.0	CAMEO		0.00		
8,240.7	8,113.0	ROLLINS SS		0.00		
8,790.7	8,663.0	COZZETTE		0.00		
9,040.7	8,913.0	CORCORAN		0.00		
9,290.7	9,163.0	MANCOS		0.00		
10,130.7	10,003.0	MANCOS E		0.00		
11,140.7	11,013.0	MANCOS HOT		0.00		
11,840.7	11,713.0	MANCOS B		0.00		
12,740.7	12,613.0	NIOBRARA		0.00		
13,790.7	13,663.0	FRONTIER		0.00		

Plan Annotations					
Measured Depth (ft)	Vertical Depth (ft)	Local Coordinates			
		+N/-S (ft)	+E/-W (ft)	Comment	
200.0	200.0	0.0	0.0	KOP @ 200' (2 DEG/100FT)	
817.5	812.7	53.7	-38.8	END OF BUILD @ 817' MD (812' TVD) (12.35 DEG INC)	
5,922.9	5,800.0	938.7	-678.5	START OF DROP @ 5922' MD (5800' TVD) (2 DEG/100 FT)	
6,540.4	6,412.7	992.5	-717.3	END OF DROP @ 6540' MD (6413' TVD)	
14,190.7	14,063.0	992.5	-717.3	PROPOSED TD @ 14191' MD (14063' TVD)	