

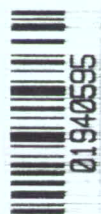


# Questar Exploration and Production Company **State 8-22** P&A Inspection

Inspected July 7, 2009

by

Stephanie Tomkinson



RECEIVED  
SEP 03 2009  
COGCC

# State 8-22



2009.07.07 Adjacent Landscape



2009.07.07 Adjacent Landscape



2009.07.07 Adjacent Landscape



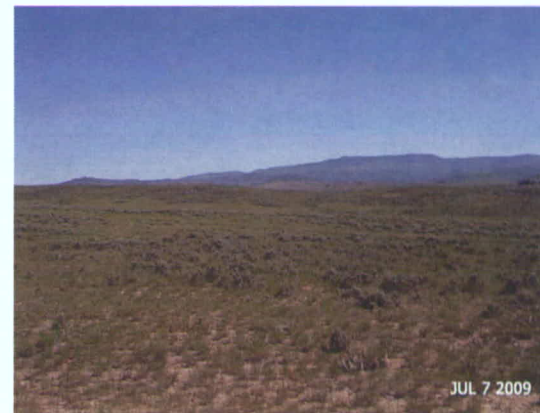
2009.07.07 Adjacent Landscape

RECEIVED  
SEP 03 2009  
COGCC

# State 8-22



2009.07.07 Adjacent Landscape



2009.07.07 Adjacent Landscape



2009.07.07 Adjacent Landscape



2009.07.07 Adjacent Landscape



RECEIVED  
SEP 03 2009  
COGCC



2009.07.07 State 8-22 (12)



2009.07.07 State 8-22 (13)



2009.07.07 State 8-22 (14)



2009.07.07 State 8-22 (15)

RECEIVED  
SEP 03 2009  
COGCC



2009.07.07 State 8-22 (16)



2009.07.07 State 8-22 (17)



2009.07.07 State 8-22 (18)



2009.07.07 State 8-22 (19)



RECEIVED

SEP 03 2009

COGCC



2009.07.07 State 8-22 (20)



2009.07.07 State 8-22 (21)



2009.07.07 State 8-22 (22)

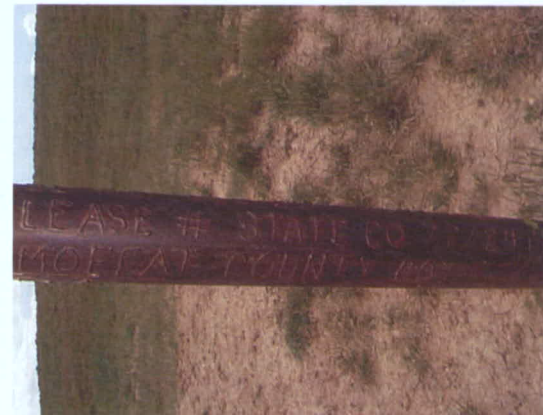


2009.07.07 State 8-22 (23)

RECEIVED  
SEP 03 2009  
COGCC



2009.07.07 State 8-22 (24)



2009.07.07 State 8-22 (25)



2009.07.07 State 8-22 (26)



2009.07.07 State 8-22 (27)



RECEIVED

SEP 03 2009

COGCC



2009.07.07 State 8-22 (28)



2009.07.07 State 8-22 (29)



2009.07.07 State 8-22 (30)



2009.07.07 State 8-22 (31)



RECEIVED

SEP 03 2009

COGCC



2009.07.07 State 8-22 (32)



2009.07.07 State 8-22 (33)



2009.07.07 State 8-22 (34)



2009.07.07 State 8-22 (35)

RECEIVED  
SEP 03 2009  
COGCC



2009.07.07 State 8-22 (36)



2009.07.07 State 8-22 (37)



2009.07.07 State 8-22 (38)



2009.07.07 Adjacent Landscape