



01759082

F2-1759083

Correspondence

Fischer, Alex

From: MClark@nobleenergyinc.com
Sent: Wednesday, September 02, 2009 12:48 PM
To: Fischer, Alex
Subject: Fw: Robert Powers X12-33 Sidetrack plan
Attachments: Robert Powers X22-33 ST.ppt; Robert Powers X12-33_sidetrack.xls; STG62927; STG58380; STG33194; STG45812

MARI CLARK
 REGULATORY ANALYST II
 1625 BROADWAY, SUITE 2200
 DENVER, CO 80202

Main: 303-228-4000
 Direct: 303-228-4413
 Fax: 303-228-4286
 Cell: 303-902-7642
mclark@nobleenergyinc.com

----- Forwarded by Mari Clark/Denver/NobleEnergy/Samedan on 09/02/2009 12:47 PM -----

Paul Majors/Denver/NobleEnergy/Samedan

To Mari Clark/Denver/NobleEnergy/Samedan@Samedan

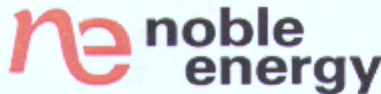
cc

08/31/2009 08:54 AM

Subject Fw: Robert Powers X12-33 Sidetrack plan

Paul Majors - P.E.
 Asset Manager - Wattenberg

Direct: 303.228.4155
 Cell: 303.829.3709
www.nobleenergyinc.com



----- Forwarded by Paul Majors/Denver/NobleEnergy/Samedan on 08/31/2009 08:53 AM -----

Alicia Branch/Denver/NobleEnergy/Samedan

08/28/2009 10:03 PM

Robert Koch/Denver/NobleEnergy/Samedan@Samedan, Bryan
 Richter/Denver/NobleEnergy/Samedan@Samedan, Dave
 Lillo/Platteville/NobleEnergy/Samedan@SAMEDAN, dsprui@nobleenergyinc.com,
 To Paul Majors/Denver/NobleEnergy/Samedan@SAMEDAN, Holly
 Sell/Denver/NobleEnergy/Samedan@Samedan, Dan
 Kelly/Denver/NobleEnergy/Samedan@SAMEDAN, Lewis
 Wandke/Denver/NobleEnergy/Samedan@Samedan

cc

Subject Robert Powers X12-33 Sidetrack plan

All,

After reviewing the faulting in offset wells, the sidetrack BHL will be...

300 FWL 1600 FSL
 lat 40.1210877
 lon -104.6583705

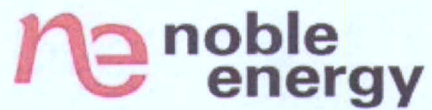
This puts us ~300' from our surface location and ~560' from the nearest offset producer Robert Powers X12-22.

The tops from logs (for plug placement) are

Here is the directional tops request form for the sidetrack.

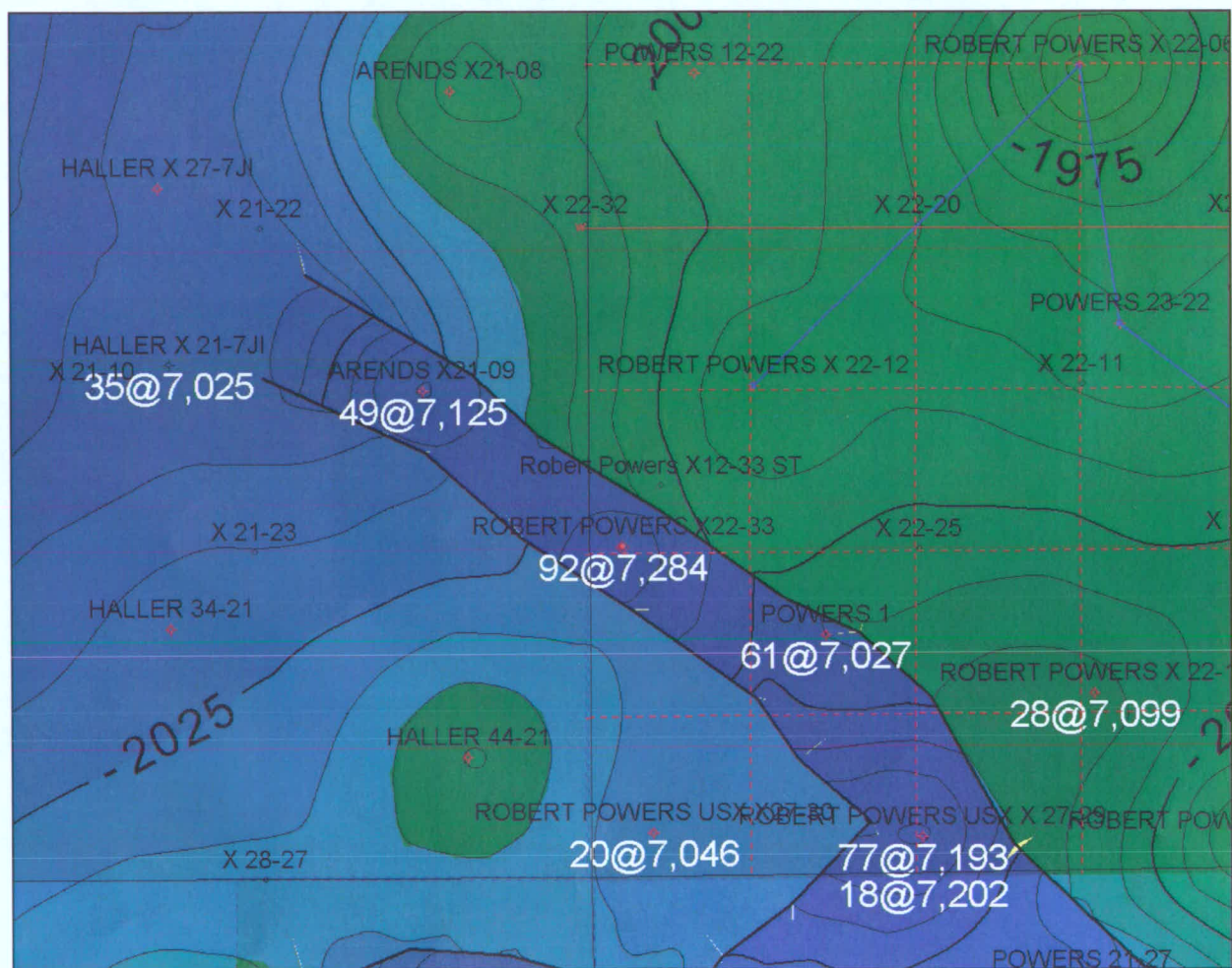
Alicia Branch
Geologist

World Trade Center
1625 Broadway, Suite 2200
Denver, CO 80202
Office: 303.228.4133
Mobile: 303.720.2762
www.nobleenergyinc.com



50212	ROBERT POWERS X22-22
50216	ROBERT POWERS X22-27
50222	ROBERT POWERS X22-33
115420	ROBERT POWERS X27-05
115421	ROBERT POWERS X27-09
115413	ROBERT POWERS X27-18
115414	ROBERT POWERS X27-22
115415	ROBERT POWERS X27-27
115418	ROBERT POWERS X27-30
113859	ROBERT SAKATA GU 2

PHUG_TOP_LYONS_13/U_J	BWR	9.043	-4.135	9.043	U	03/06/2008	Sampled from Die
INTRA_SHARON_SPRINGS_MK_BWR *	BWR	6.918	-2.010	6.918	0	08/28/2009	
TOP_NIOBRARA_SB_BASE_PIERRE_SH *	BWR	6.970	-2.062	6.970	0	08/28/2009	
TOP_NIO_A_MARL_BWR *	BWR	6.991	-2.083	6.991	0	08/28/2009	
TOP_NIO_B_CHALK *	BWR	7.032	-2.124	7.032	0	08/28/2009	
TOP_NIO_B_MARL_BWR *	BWR	7.063	-2.155	7.063	0	08/28/2009	
TOP_NIO_C_CHALK_BWR *	BWR	7.128	-2.220	7.128	0	08/28/2009	
TOP_NIO_LOWER_C *	BWR	7.154	-2.246	7.154	0	08/28/2009	
TOP_NIO_C_MARL_BWR *	BWR	7.166	-2.258	7.166	0	08/28/2009	
TOP_NIO_D_CHALK_BWR *	BWR	7.201	-2.293	7.201	0	08/28/2009	
TOP_NIO_FT_HAYES_LS_BWR *	BWR	7.275	-2.367	7.275	0	08/28/2009	
GREENHORN_MKR *	BWR	7.298	-2.390	7.298	0	08/28/2009	



Top Nio structure map
Fault cuts in white

Robert Powers X12-33 sidetrack

Surface	Footages:	1329	FSL	167	FWL	
		Qrt/Qrt	Sec	Township	Range	
	Legals:	SWSW	22	2N	65W	
	Lat / Longs:	40.12041		-104.65891		
Bottom Hole	Footages:	1600	FSL	300	FWL	
		Qrt/Qrt	Sec	Township	Range	
	Legals:		22	2N	65W	
	Estimated Reach:	300	ft			
Rig	GL Elevation:	4893	ft			
	Average KB:	13				
	KB Elevation:	4903	ft			
Formation & Depths <small>(Geologist Submits TVDSS Tops Data and Engineer Inputs Data into Spreadsheet)</small>	FORMATION TOPS ESTIMATED			TARGET ZONE J-SAND		
		TVD TOPS			TVDSS TOPS -	
		Calculated from KB and TVDSS Tops			Geologist Input	
	Niobrara	6,903	ft (TVD)	-2,000	ft (TVDSS)	
	Codell	7,223	ft (TVD)	-2,320	ft (TVDSS)	
	D-Sand	N/A	ft (TVD)	N/A	ft (TVDSS)	
	J-Sand	N/A	ft (TVD)	N/A	ft (TVDSS)	
	Dakota	N/A	ft (TVD)	N/A	ft (TVDSS)	
	Est TD:	7,373	ft (TVD)	-2,470	ft (TVDSS)	
	Additional Information	Comments:	sidetrack moved NE away from NW/SE trending fault system. 8-28-09 10pm			
Window:						
Hardlines:		400' FWL; 550' from nearest producing offset Robert Powers X12-22				

Engineers - 75' from all hardlines - sectionlines, 1/4 section lines and drilling windows.

Engineers - Pay close attention to the throw distances of your wells - if they are close to break points analyze your BHL

1. Directional Cut-offs

Lateral (ft)	Additional Charge (\$)
0-1600'	##
1601-2000'	10000
2001-2500	20000
2501-3000	30000
3001-3500	40000
3501-4000	50000
4001-4500	60000
4500-???	???
4500-???	???