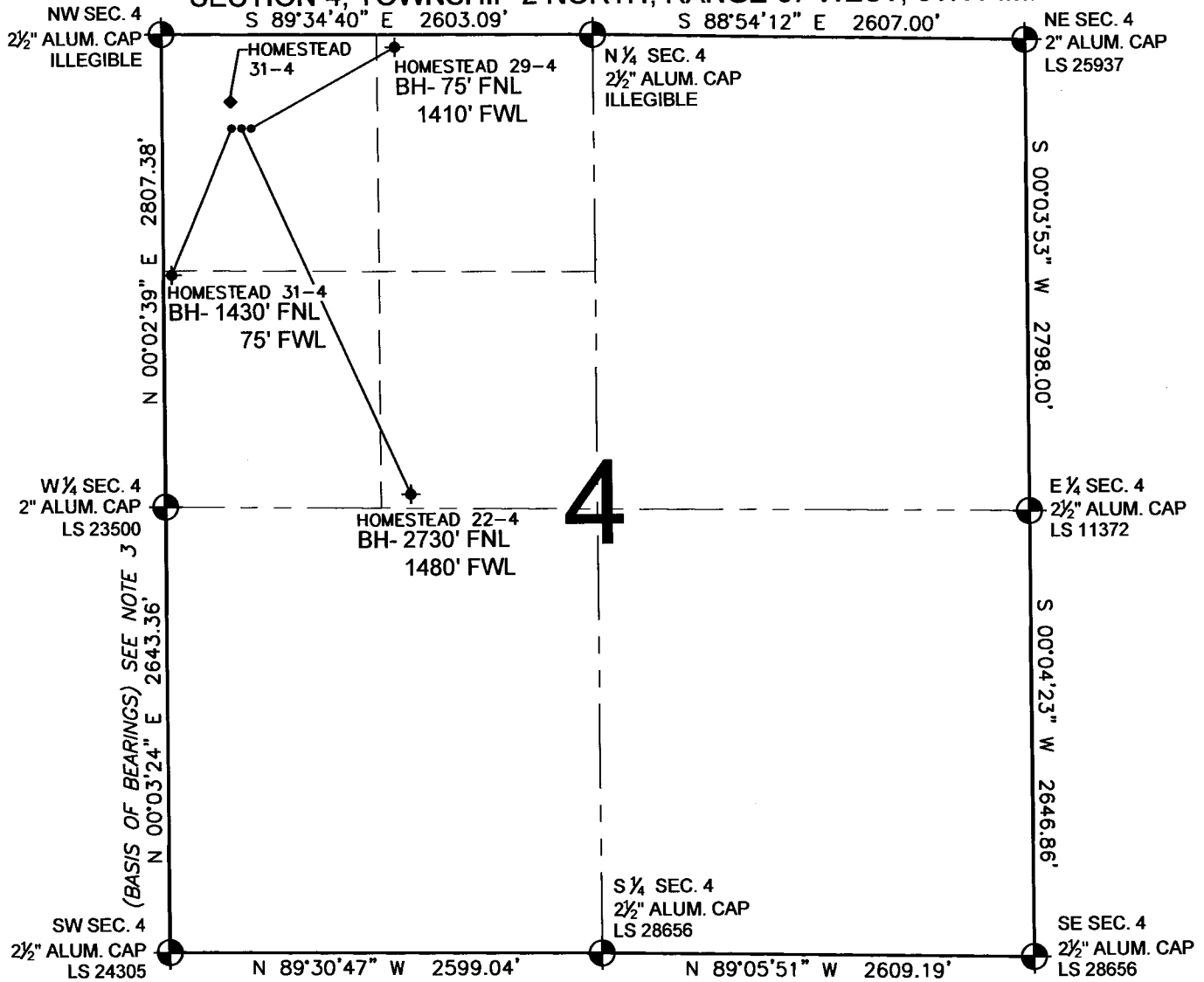


PAD DRAWING - HOMESTEAD 3 PAD

SECTION 4, TOWNSHIP 2 NORTH, RANGE 67 WEST, 6TH P.M.



NOTES:

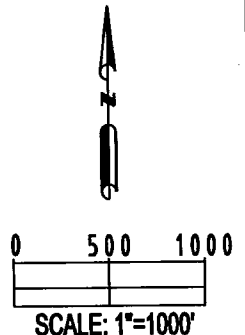
1. THIS SURVEY WAS DONE BY GPS METHODS AND CONFORMS TO THE MINIMUM STANDARDS SET BY THE C.O.G.C.C., RULE NO. 215 (PDOP VALUE IS LESS THAN 6.0, LATITUDE AND LONGITUDE ARE ACCURATE TO 5 DECIMAL PLACES, AND GPS OBSERVATIONS ARE DIFFERENTIAL AND DONE BY QUALIFIED PERSONNEL.)
2. ELEVATIONS SHOWN AT THE WELL HEAD, AS WELL AS HORIZONTAL CONTROL, ARE BASED ON GPS-RTK VALUES DERIVED FROM DOING 2-HOUR STATIC GPS SESSIONS AND REDUCTIONS USING O.P.U.S. SOLUTIONS.
VERTICAL = NAVD88; HORIZONTAL = NAD83/92
3. THE BEARINGS SHOWN HEREON ARE BASED ON GPS OBSERVATIONS BETWEEN THE MONUMENTS SHOWN HEREON AS FOUND ON THE FIELD DATE BELOW.
4. DISTANCES SHOWN ARE AT GROUND LEVEL, AS MEASURED IN THE FIELD, WITH TIES TO WELLS MEASURED AT A PERPENDICULAR TO SECTION LINES.

LEGEND

- = EXISTING MONUMENT
 = PROPOSED WELL
 = BOTTOM HOLE
 BH= BOTTOM HOLE
 = EXISTING WELL

NOTES:

HOMESTEAD 29-4 TO BE AT 559' FNL, 540' FWL.
 BOTTOM HOLE AT 75' FNL & 1410' FWL.
 HOMESTEAD 22-4 TO BE AT 559' FNL, 524' FWL.
 BOTTOM HOLE AT 2730' FNL & 1480' FWL.
 HOMESTEAD 31-4 TO BE AT 559' FNL, 508' FWL.
 BOTTOM HOLE AT 1430' FNL & 50' FWL.
 HOMESTEAD 4-4 IS 510' FNL, 508' FWL.



REVISIONS		PREPARED BY:
INITIAL	DATE	

KERR-MCGEE OIL & GAS ONSHORE LP

FIELD DATE: 05-21-09	PAD NAME: HOMESTEAD 3 PAD
DRAWING DATE: 05-26-09	SURFACE LOCATION: WELD COUNTY, COLORADO NW 1/4 NW 1/4, SEC. 4, T2N, R67W
BY: SMF	