



August 11, 2009

Department of Natural Resources  
Oil and Gas Conservation Commission  
The Chancery Building  
1120 Lincoln St., Suite 801  
Denver, CO 80203

Re: **20 Day Certification Letter - 318A-e**  
HOMESTEAD 22-4  
Township 2 North, Range 67 West, Section 4: NW/4NW/4  
Unit Spacing:: 02N-67W-04 S2NW4, N2SW/4  
Weld County, Colorado

Ladies/Gentlemen:

Kerr-McGee Oil and Gas Onshore LP ("KMG") hereby certifies to the Director that a twenty (20) day notice has been given by certified mail to all owners in the proposed wellbore spacing unit. We have not received any objections to such well location, proposed spacing unit, or additional producing formation. KMG hereby requests the Director to approve the boundary well.

If you have any questions or issues regarding this permit, please contact Cheryl Light at (720) 929-6461.

Very truly yours,

**Kerr-McGee Oil and Gas Onshore LP**

A handwritten signature in blue ink that reads 'Cheryl Light'.

**Cheryl Light**  
**Senior Regulatory Analyst**

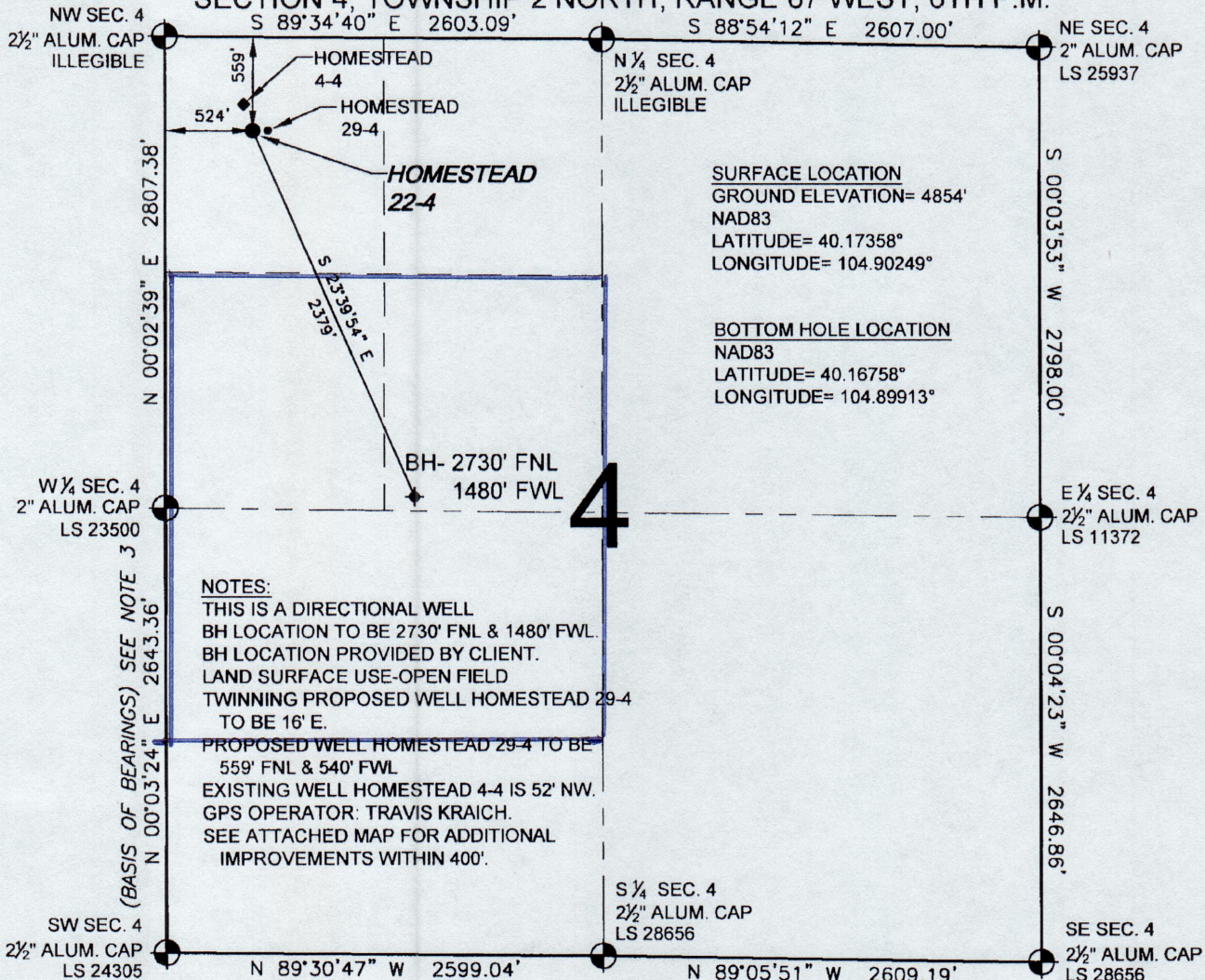
:cl  
Enclosure



318A Proposed Spacing  
Unit Plan

# WELL LOCATION CERTIFICATE: HOMESTEAD 22-4

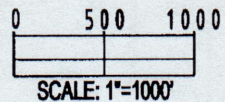
SECTION 4, TOWNSHIP 2 NORTH, RANGE 67 WEST, 6TH P.M.



WELL HOMESTEAD 22-4 TO BE LOCATED 559' FNL AND 524' FWL, SECTION 4, T2N, R67W OF THE 6th P.M.

## LEGEND

- = EXISTING MONUMENT    ✕ = BOTTOM HOLE    BH = BOTTOM HOLE  
● = PROPOSED WELL    ✕ = EXISTING WELL

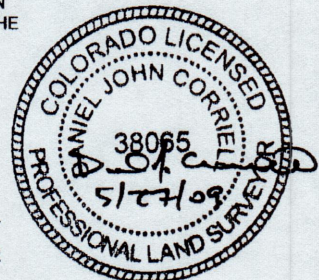


## NOTES:

- THIS SURVEY WAS DONE BY GPS METHODS AND CONFORMS TO THE MINIMUM STANDARDS SET BY THE C.O.G.C.C., RULE NO. 215 (PDOP VALUE IS LESS THAN 6.0, LATITUDE AND LONGITUDE ARE ACCURATE TO 5 DECIMAL PLACES, AND GPS OBSERVATIONS ARE DIFFERENTIAL AND DONE BY QUALIFIED PERSONNEL.)
- ELEVATIONS SHOWN AT THE WELL HEAD, AS WELL AS HORIZONTAL CONTROL, ARE BASED ON GPS-RTK VALUES DERIVED FROM DOING 2-HOUR STATIC GPS SESSIONS AND REDUCTIONS USING O.P.U.S. SOLUTIONS.  
VERTICAL = NAVD88; HORIZONTAL = NAD83/92
- THE BEARINGS SHOWN HEREON ARE BASED ON GPS OBSERVATIONS BETWEEN THE MONUMENTS SHOWN HEREON AS FOUND ON THE FIELD DATE BELOW.
- DISTANCES SHOWN ARE AT GROUND LEVEL, AS MEASURED IN THE FIELD, WITH TIES TO WELLS MEASURED AT A PERPENDICULAR TO SECTION LINES.

I, DANIEL J. CORRIELL, A LICENSED PROFESSIONAL LAND SURVEYOR IN THE STATE OF COLORADO DO HEREBY CERTIFY TO **KERR-MCGEE OIL & GAS ONSHORE LP**, THAT THE SURVEY AND WELL LOCATION CERTIFICATE SHOWN HEREON WERE DONE BY ME OR UNDER MY DIRECT SUPERVISION AND THAT THE DRAWING SHOWN HEREON ACCURATELY DEPICTS THE PROPOSED LOCATION OF THE WELL **HOMESTEAD 22-4**. THIS CERTIFICATE DOES NOT REPRESENT A LAND SURVEY PLAT OR IMPROVEMENT SURVEY PLAT AS DEFINED BY C.R.S. 38-51-102 AND CANNOT BE RELIED UPON TO DETERMINE OWNERSHIP.

DANIEL J. CORRIELL, PLS 38065  
COLORADO LICENSED PROFESSIONAL LAND SURVEYOR  
FOR AND ON BEHALF OF P.F.S., LLC

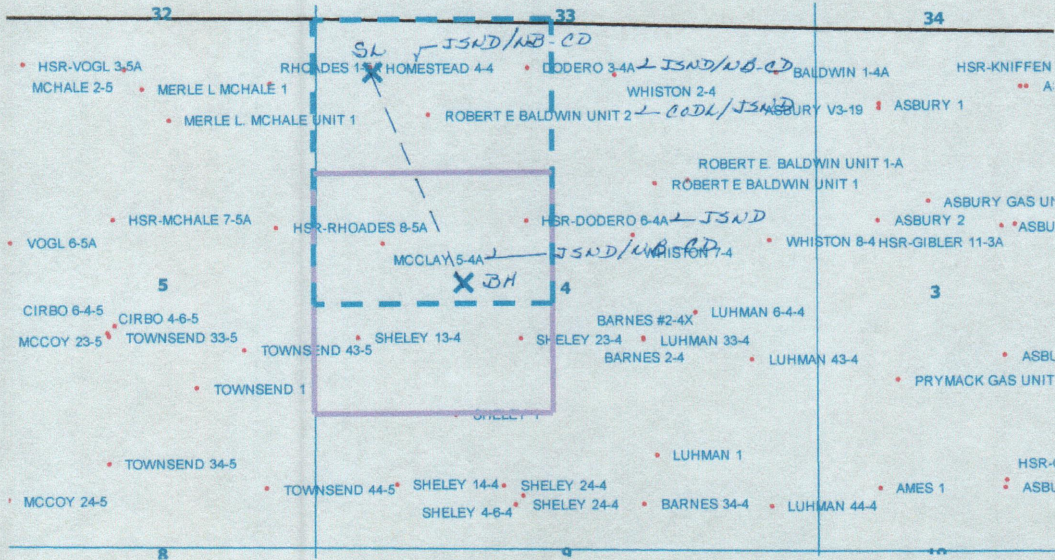


PREPARED BY: <b>PFS</b> Petroleum Field Services, LLC 1801 W. 13th Ave. Denver, CO 80204	FIELD DATE: 05-21-09 DRAWING DATE: 05-26-09 BY: SMF	WELL NAME: HOMESTEAD 22-4 SURFACE LOCATION: WELD COUNTY, COLORADO NW 1/4 NW 1/4, SEC. 4, T2N, R67W
--	--	--

NOTICE: ACCORDING TO COLORADO LAW YOU MUST COMMENCE ANY LEGAL ACTION BASED UPON ANY DEFECT IN THIS SURVEY WITHIN THREE YEARS AFTER YOU FIRST DISCOVER SUCH DEFECT. IN NO EVENT MAY ANY ACTION BASED UPON ANY DEFECT IN THIS SURVEY BE COMMENCED MORE THAN TEN YEARS FROM THIS SAID DATE OF THIS CERTIFICATION SHOWN HEREON.



# **HOMESTEAD 22-4** **NWNW Sec. 4 T2N-R67W**



## **LEGEND**



Proposed 160 acre Spacing Unit (Solid line).



Bottom Hole Located SE4NW/4, Sec. 4-T2N-R67W (Dashed line).

**This 1/4 Section has less than 8 bottom hole wells producing from the Codell, Niobrara & J Sand Formations.**