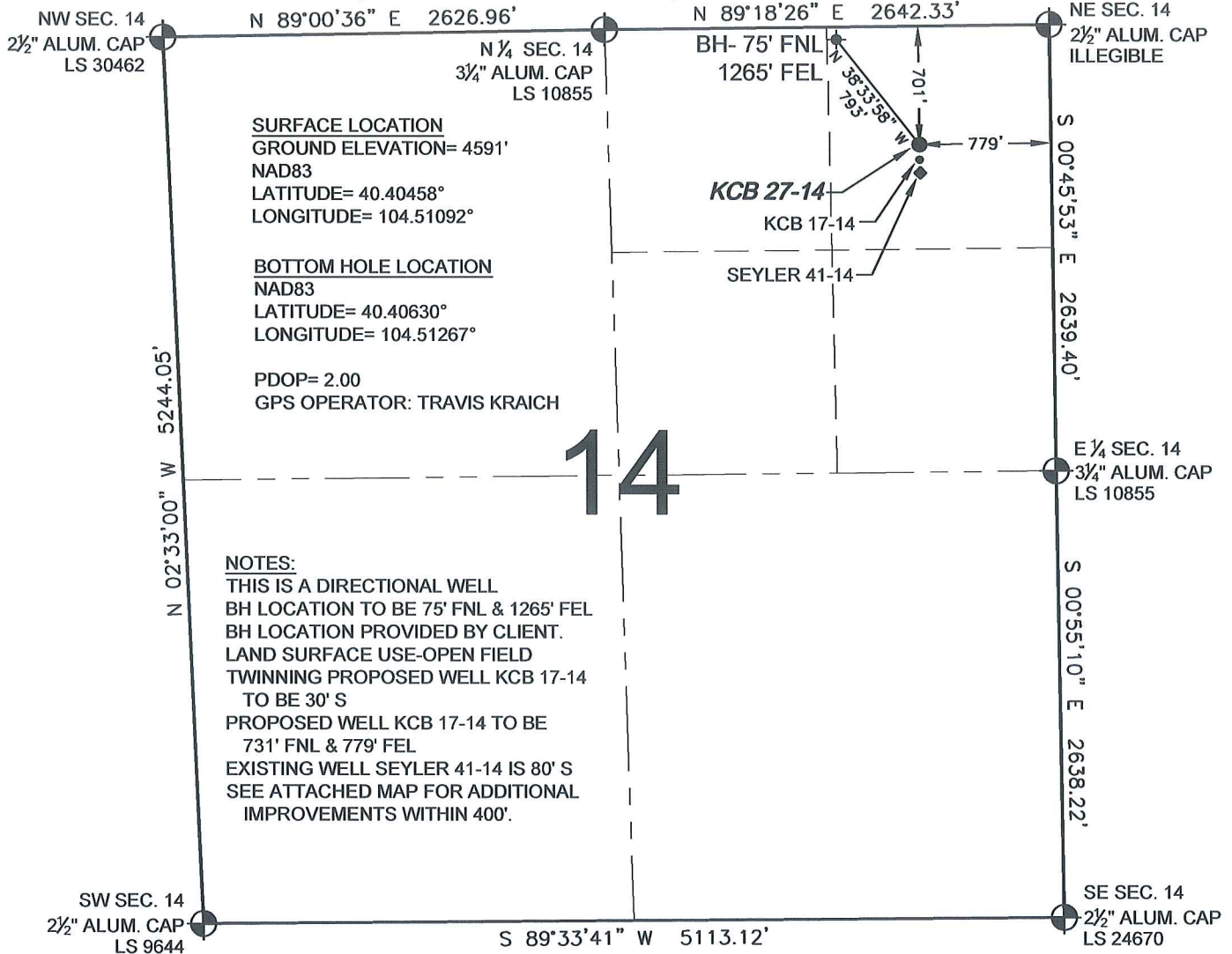


WELL LOCATION CERTIFICATE: KCB 27-14

SECTION 14, TOWNSHIP 5 NORTH, RANGE 64 WEST, 6TH P.M.



WELL KCB 27-14 TO BE LOCATED 701' FNL AND 779' FEL, SECTION 14, T5N, R64W OF THE 6th P.M.

LEGEND

- = EXISTING MONUMENT ◆ = BOTTOM HOLE BH = BOTTOM HOLE
● = PROPOSED WELL ◆ = EXISTING WELL

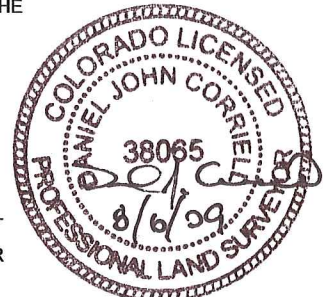


NOTES:

- THIS SURVEY WAS DONE BY GPS METHODS AND CONFORMS TO THE MINIMUM STANDARDS SET BY THE C.O.G.C.C., RULE NO. 215.
- ELEVATIONS SHOWN AT THE WELL HEAD, AS WELL AS HORIZONTAL CONTROL, ARE BASED ON GPS-RTK VALUES DERIVED FROM DOING 2-HOUR STATIC GPS SESSIONS AND REDUCTIONS USING O.P.U.S. SOLUTIONS.
VERTICAL = NAVD88; HORIZONTAL = NAD83/92
- THE BEARINGS SHOWN HEREON ARE BASED ON GPS OBSERVATIONS BETWEEN THE MONUMENTS SHOWN HEREON AS FOUND ON THE FIELD DATE BELOW.
- DISTANCES SHOWN ARE AT GROUND LEVEL, AS MEASURED IN THE FIELD, WITH TIES TO WELLS MEASURED AT A PERPENDICULAR TO SECTION LINES.

I, DANIEL J. CORRIELL, A LICENSED PROFESSIONAL LAND SURVEYOR IN THE STATE OF COLORADO DO HEREBY CERTIFY TO **KERR-MCGEE OIL & GAS ONSHORE LP**, THAT THE SURVEY AND WELL LOCATION CERTIFICATE SHOWN HEREON WERE DONE BY ME OR UNDER MY DIRECT SUPERVISION AND THAT THE DRAWING SHOWN HEREON ACCURATELY DEPICTS THE PROPOSED LOCATION OF THE WELL **KCB 27-14**. THIS CERTIFICATE DOES NOT REPRESENT A LAND SURVEY PLAT OR IMPROVEMENT SURVEY PLAT AS DEFINED BY C.R.S. 38-51-102 AND CANNOT BE RELIED UPON TO DETERMINE OWNERSHIP.

DANIEL J. CORRIELL, PLS 38065
COLORADO LICENSED PROFESSIONAL LAND SURVEYOR
FOR AND ON BEHALF OF P.F.S., LLC

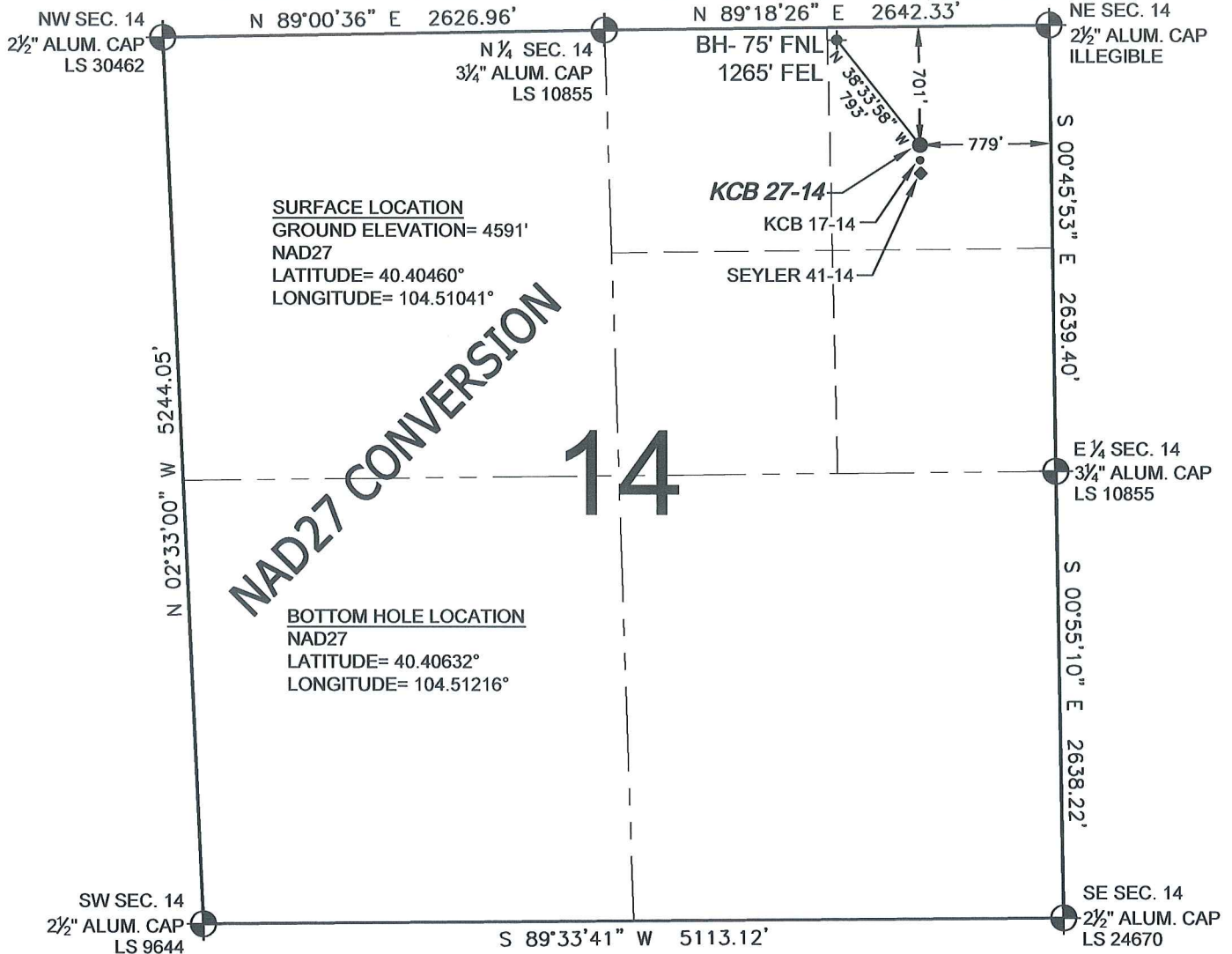


PREPARED BY: PFS Petroleum Field Services, LLC 1801 W. 13th Ave. Denver, CO 80204	FIELD DATE: 08-05-09 DRAWING DATE: 08-06-09 BY: SMF	WELL NAME: KCB 27-14 SURFACE LOCATION: WELD COUNTY, COLORADO NE 1/4 NE 1/4, SEC. 14, T5N, R64W
--	--	--

NOTICE: ACCORDING TO COLORADO LAW YOU MUST COMMENCE ANY LEGAL ACTION BASED UPON ANY DEFECT IN THIS SURVEY WITHIN THREE YEARS AFTER YOU FIRST DISCOVER SUCH DEFECT. IN NO EVENT MAY ANY ACTION BASED UPON ANY DEFECT IN THIS SURVEY BE COMMENCED MORE THAN TEN YEARS FROM THIS SAID DATE OF THIS CERTIFICATION SHOWN HEREON.

EXHIBIT: NAD27 CONVERSION

SECTION 14, TOWNSHIP 5 NORTH, RANGE 64 WEST, 6TH P.M.



WELL KCB 27-14 TO BE LOCATED 701' FNL AND 779' FEL, SECTION 14, T5N, R64W OF THE 6th P.M.

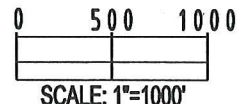
NOTES:

- THIS SURVEY WAS DONE BY GPS METHODS AND CONFORMS TO THE MINIMUM STANDARDS SET BY THE C.O.G.C.C., RULE NO. 215 (PDOP VALUE IS LESS THAN 6.0, LATITUDE AND LONGITUDE ARE ACCURATE TO 5 DECIMAL PLACES, AND GPS OBSERVATIONS ARE DIFFERENTIAL AND DONE BY QUALIFIED PERSONNEL.)
- ELEVATIONS SHOWN AT THE WELL HEAD, AS WELL AS HORIZONTAL CONTROL, ARE BASED ON GPS-RTK VALUES DERIVED FROM DOING 2-HOUR STATIC GPS SESSIONS AND REDUCTIONS USING O.P.U.S. SOLUTIONS.
VERTICAL = NAVD88; HORIZONTAL = NAD83/92
- THE BEARINGS SHOWN HEREON ARE BASED ON GPS OBSERVATIONS BETWEEN THE MONUMENTS SHOWN HEREON AS FOUND ON THE FIELD DATE BELOW.
- DISTANCES SHOWN ARE AT GROUND LEVEL, AS MEASURED IN THE FIELD, WITH TIES TO WELLS MEASURED AT A PERPENDICULAR TO SECTION LINES.

LEGEND

- = EXISTING MONUMENT ♦ = BOTTOM HOLE BH = BOTTOM HOLE
● = PROPOSED WELL ♦ = EXISTING WELL

NOTE: LATITUDE AND LONGITUDE SHOWN WERE CONVERTED FROM NAD83 USING CORPSCON 6.0 (PROGRAM). PFS DOES NOT WARRANT OR GUARANTEE THEIR ACCURACY.



PREPARED BY:	FIELD DATE:	WELL NAME:
PFS Petroleum Field Services, LLC 1801 W. 13th Ave. Denver, CO 80204	08-05-09	KCB 27-14
DRAWING DATE:	SURFACE LOCATION:	
08-06-09	WELD COUNTY, COLORADO	
BY:	NE 1/4 NE 1/4, SEC. 14, T5N, R64W	
SMF		

NOTICE: ACCORDING TO COLORADO LAW YOU MUST COMMENCE ANY LEGAL ACTION BASED UPON ANY DEFECT IN THIS SURVEY WITHIN THREE YEARS AFTER YOU FIRST DISCOVER SUCH DEFECT. IN NO EVENT MAY ANY ACTION BASED UPON ANY DEFECT IN THIS SURVEY BE COMMENCED MORE THAN TEN YEARS FROM THIS SAID DATE OF THIS CERTIFICATION SHOWN HEREON.