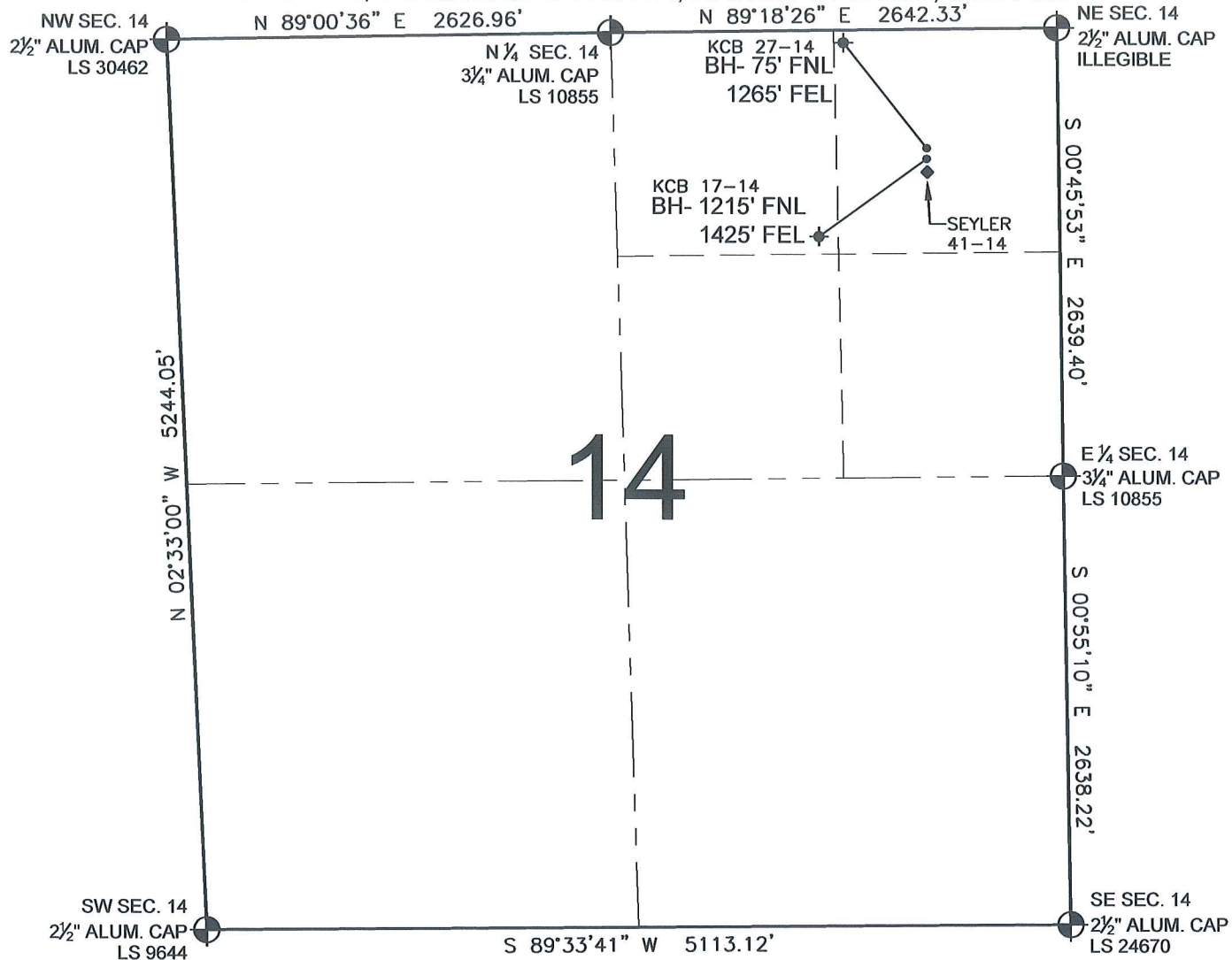


PAD DRAWING - KCB 2 PAD

SECTION 14, TOWNSHIP 5 NORTH, RANGE 64 WEST, 6TH P.M.



NOTES:

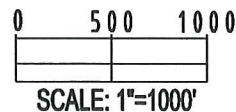
1. THIS SURVEY WAS DONE BY GPS METHODS AND CONFORMS TO THE MINIMUM STANDARDS SET BY THE C.O.G.C.C., RULE NO. 215.
2. ELEVATIONS SHOWN AT THE WELL HEAD, AS WELL AS HORIZONTAL CONTROL, ARE BASED ON GPS-RTK VALUES DERIVED FROM DOING 2-HOUR STATIC GPS SESSIONS AND REDUCTIONS USING O.P.U.S. SOLUTIONS.
VERTICAL = NAVD88; HORIZONTAL = NAD83/92
3. THE BEARINGS SHOWN HEREON ARE BASED ON GPS OBSERVATIONS BETWEEN THE MONUMENTS SHOWN HEREON AS FOUND ON THE FIELD DATE BELOW.
4. DISTANCES SHOWN ARE AT GROUND LEVEL, AS MEASURED IN THE FIELD, WITH TIES TO WELLS MEASURED AT A PERPENDICULAR TO SECTION LINES.

LEGEND

- = EXISTING MONUMENT
 = BOTTOM HOLE
 BH= BOTTOM HOLE
 = PROPOSED WELL
 = EXISTING WELL

NOTES:

KCB 27-14 TO BE AT 701' FNL, 779' FEL.
 BOTTOM HOLE AT 75' FNL & 1265' FEL.
 KCB 17-14 TO BE AT 731' FNL, 779' FEL.
 BOTTOM HOLE AT 1215' FNL & 1425' FEL.
 SEYLER 41-14 IS 781' FNL, 779' FEL.



REVISIONS

INITIAL	DATE

PREPARED BY:

PFS

Petroleum Field Services, LLC
1801 W. 13th Ave.
Denver, CO 80204



KERR-MCGEE OIL & GAS ONSHORE LP

FIELD DATE:
08-05-09

DRAWING DATE:
08-06-09

BY:
SMF

PAD NAME:
KCB 2 PAD

SURFACE LOCATION:

WELD COUNTY, COLORADO

NE 1/4 NE 1/4, SEC. 14, T5N, R64W