

ANADARKO PETROLEUM

Location: COLORADO Slot: SLOT#06 GARCIA 22-25 (1234'FNL & 1303'FWL)
Field: WELD COUNTY (ANADARKO) Well: GARCIA 22-25
Facility: SEC.25-T4N-R67W Wellbore: GARCIA 22-25 PWB



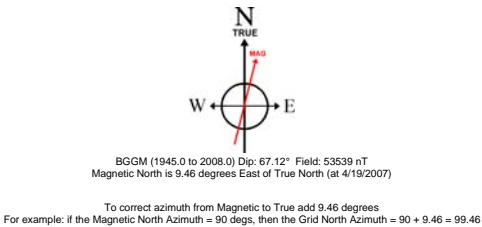
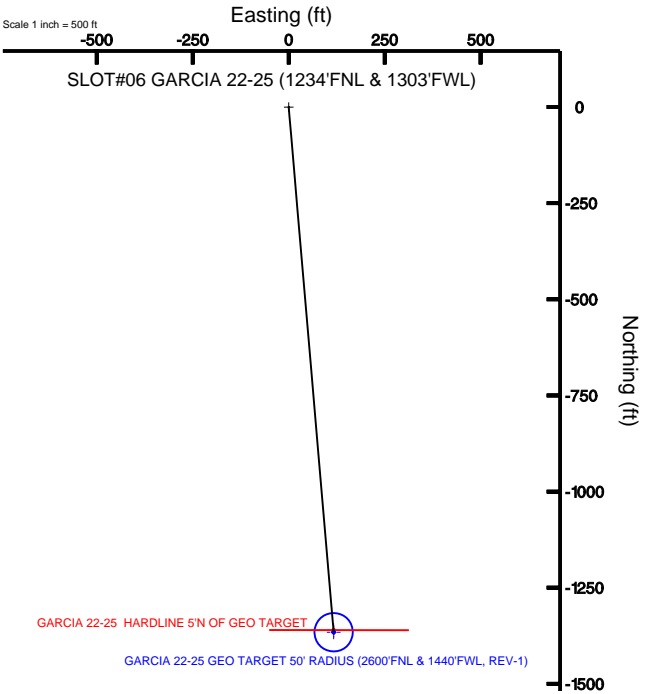
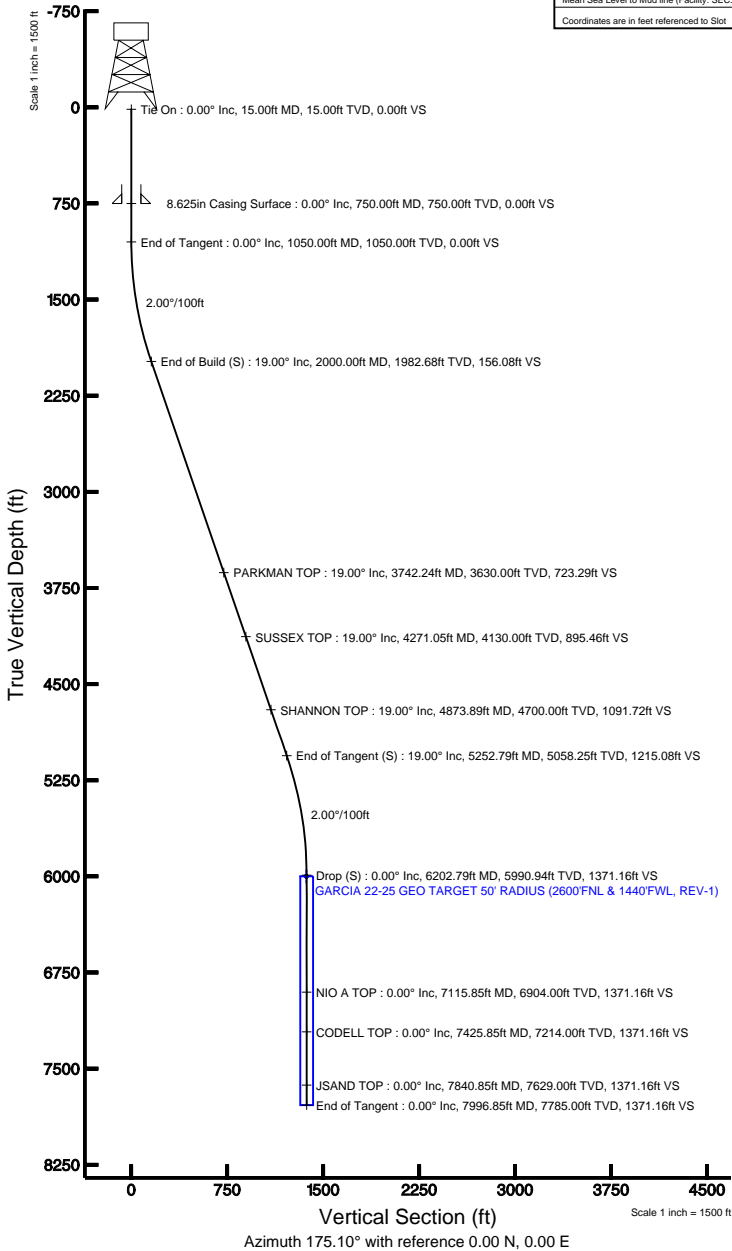
Well Profile Data							
Design Comment	MD (ft)	Inc (°)	Az (°)	TVD (ft)	Local N (ft)	Local E (ft)	DLS (°/100ft)
Tie On	15.00	0.000	175.097	15.00	0.00	0.00	0.00
End of Tangent	1050.00	0.000	175.097	1050.00	0.00	0.00	0.00
End of Build (S)	2000.00	19.000	175.097	1982.68	-155.51	13.34	2.00
End of Tangent (S)	5252.79	19.000	175.097	5058.25	-1210.64	103.84	0.00
Drop (S)	6202.79	0.000	175.097	5990.94	-1366.14	117.18	2.00
End of Tangent	7996.85	0.000	175.097	7785.00	-1366.14	117.18	0.00

Location Information				
Facility Name		Grid East (USRT)	Grid North (USRT)	Latitude
SEC.25-T4N-R67W		3184802.670	1344661.200	40°16'39.360"N
Slot	Local N (ft)	Local E (ft)	Grid East (USRT)	Grid North (USRT)
SLOT#06 GARCIA 22-25 (1234'FNL & 1303'FWL)	3329.81	-1768.78	3183009.146	1347977.557
Rig on SLOT#06 GARCIA 22-25 (1234'FNL & 1303'FWL) (RT) to Mud line (Facility: SEC.25-T4N-R67W)				4742ft
Mean Sea Level to Mud line (Facility: SEC.25-T4N-R67W)				0ft
Rig on SLOT#06 GARCIA 22-25 (1234'FNL & 1303'FWL) (RT) to Mean Sea Level				4742ft

Targets								
Name	MD (ft)	TVD (ft)	Local N (ft)	Local E (ft)	Grid East (USRT)	Grid North (USRT)	Latitude	Longitude
GARCIA 22-25 HARDLINE 5'N OF GEO TARGET		6000.00	-1361.14	117.18	3183136.39	1346617.38	40°16'58.813"N	104°50'36.852"W
GARCIA 22-25 GEO TARGET 50' RADIUS (2600'FNL & 1440'FWL, REV-1)		6000.00	-1366.14	117.18	3183136.43	1346612.38	40°16'58.764"N	104°50'36.852"W

Plot reference wellpath is GARCIA 22-25 (REV-A.0) PWP

True vertical depths are referenced to Rig on SLOT#06 GARCIA 22-25 (1234'FNL & 1303'FWL) (RT)	Grid System: NAD83 / Lambert Colorado State Planes, Northern Zone (501), US feet
Measured depths are referenced to Rig on SLOT#06 GARCIA 22-25 (1234'FNL & 1303'FWL) (RT)	North Reference: True north
Rig on SLOT#06 GARCIA 22-25 (1234'FNL & 1303'FWL) (RT) to Mean Sea Level: 4742 feet	Scale: True distance
Mean Sea Level to Mud line (Facility: SEC.25-T4N-R67W): 0 feet	Depths are in feet
Coordinates are in feet referenced to Slot	Created by: cookdan on 8/17/2009



Planned Wellpath Report

GARCIA 22-25 (REV-A.0) PWP

Page 1 of 5

INTEQ

REFERENCE WELLPATH IDENTIFICATION

Operator	ANADARKO PETROLEUM	Slot	SLOT#06 GARCIA 22-25 (1234'FNL & 1303'FWL)
Area	COLORADO	Well	GARCIA 22-25
Field	WELD COUNTY (ANADARKO)	Wellbore	GARCIA 22-25 PWB
Facility	SEC.25-T4N-R67W		

REPORT SETUP INFORMATION

Projection System	NAD83 / Lambert Colorado State Planes, Northern Zone (501), US feet	Software System	WellArchitect® 2.0
North Reference	True	User	Cookdanm
Scale	0.999957	Report Generated	8/17/2009 at 1:25:05 PM
Convergence at slot	0.42° East	Database/Source file	WellArchitect_Denver/GARCIA_22-25_PWB.xml

WELLPATH LOCATION

	Local coordinates		Grid coordinates		Geographic coordinates	
	North[ft]	East[ft]	Easting[USft]	Northing[USft]	Latitude	Longitude
Slot Location	3329.81	-1768.78	3183009.15	1347977.56	40°17'12.264"N	104°50'38.364"W
Facility Reference Pt			3184802.67	1344661.20	40°16'39.360"N	104°50'15.540"W
Field Reference Pt			3197771.84	1268891.29	40°04'09.600"N	104°47'36.000"W

WELLPATH DATUM

Calculation method	Minimum curvature	Rig on SLOT#06 GARCIA 22-25 (1234'FNL & 1303'FWL) (RT) to Facility Vertical Datum	4
Horizontal Reference Pt	Slot	Rig on SLOT#06 GARCIA 22-25 (1234'FNL & 1303'FWL) (RT) to Mean Sea Level	4
Vertical Reference Pt	Rig on SLOT#06 GARCIA 22-25 (1234'FNL & 1303'FWL) (RT)	Facility Vertical Datum to Mud Line (Facility)	0
MD Reference Pt	Rig on SLOT#06 GARCIA 22-25 (1234'FNL & 1303'FWL) (RT)	Section Origin	1
Field Vertical Reference	Mean Sea Level	Section Azimuth	1

Planned Wellpath Report

GARCIA 22-25 (REV-A.0) PWP

Page 2 of 5

INTEQ

REFERENCE WELLPATH IDENTIFICATION

Operator	ANADARKO PETROLEUM	Slot	SLOT#06 GARCIA 22-25 (1234'FNL & 1303'FWL)
Area	COLORADO	Well	GARCIA 22-25
Field	WELD COUNTY (ANADARKO)	Wellbore	GARCIA 22-25 PWB
Facility	SEC.25-T4N-R67W		

WELLPATH DATA (92 stations) † = interpolated/extrapolated station

MD [ft]	Inclination [°]	Azimuth [°]	TVD [ft]	Vert Sect [ft]	North [ft]	East [ft]	DLS [°/100ft]	Comments
0.00†	0.000	175.097	0.00	0.00	0.00	0.00	0.00	
15.00	0.000	175.097	15.00	0.00	0.00	0.00	0.00	Tie On
115.00†	0.000	175.097	115.00	0.00	0.00	0.00	0.00	
215.00†	0.000	175.097	215.00	0.00	0.00	0.00	0.00	
315.00†	0.000	175.097	315.00	0.00	0.00	0.00	0.00	
415.00†	0.000	175.097	415.00	0.00	0.00	0.00	0.00	
515.00†	0.000	175.097	515.00	0.00	0.00	0.00	0.00	
615.00†	0.000	175.097	615.00	0.00	0.00	0.00	0.00	
715.00†	0.000	175.097	715.00	0.00	0.00	0.00	0.00	
815.00†	0.000	175.097	815.00	0.00	0.00	0.00	0.00	
915.00†	0.000	175.097	915.00	0.00	0.00	0.00	0.00	
1015.00†	0.000	175.097	1015.00	0.00	0.00	0.00	0.00	
1050.00	0.000	175.097	1050.00	0.00	0.00	0.00	0.00	End of Tangent
1115.00†	1.300	175.097	1114.99	0.74	-0.73	0.06	2.00	
1215.00†	3.300	175.097	1214.91	4.75	-4.73	0.41	2.00	
1315.00†	5.300	175.097	1314.62	12.25	-12.20	1.05	2.00	
1415.00†	7.300	175.097	1414.01	23.22	-23.14	1.98	2.00	
1515.00†	9.300	175.097	1512.96	37.66	-37.52	3.22	2.00	
1615.00†	11.300	175.097	1611.34	55.53	-55.33	4.75	2.00	
1715.00†	13.300	175.097	1709.04	76.84	-76.56	6.57	2.00	
1815.00†	15.300	175.097	1805.94	101.54	-101.16	8.68	2.00	
1915.00†	17.300	175.097	1901.92	129.60	-129.13	11.08	2.00	
2000.00	19.000	175.097	1982.68	156.08	-155.51	13.34	2.00	End of Build (S)
2015.00†	19.000	175.097	1996.87	160.96	-160.37	13.76	0.00	
2115.00†	19.000	175.097	2091.42	193.52	-192.81	16.54	0.00	
2215.00†	19.000	175.097	2185.97	226.07	-225.25	19.32	0.00	
2315.00†	19.000	175.097	2280.52	258.63	-257.69	22.10	0.00	
2415.00†	19.000	175.097	2375.07	291.19	-290.12	24.89	0.00	
2515.00†	19.000	175.097	2469.63	323.75	-322.56	27.67	0.00	
2615.00†	19.000	175.097	2564.18	356.30	-355.00	30.45	0.00	
2715.00†	19.000	175.097	2658.73	388.86	-387.44	33.23	0.00	
2815.00†	19.000	175.097	2753.28	421.42	-419.87	36.01	0.00	
2915.00†	19.000	175.097	2847.83	453.97	-452.31	38.80	0.00	
3015.00†	19.000	175.097	2942.39	486.53	-484.75	41.58	0.00	
3115.00†	19.000	175.097	3036.94	519.09	-517.19	44.36	0.00	
3215.00†	19.000	175.097	3131.49	551.64	-549.62	47.14	0.00	
3315.00†	19.000	175.097	3226.04	584.20	-582.06	49.93	0.00	
3415.00†	19.000	175.097	3320.59	616.76	-614.50	52.71	0.00	
3515.00†	19.000	175.097	3415.14	649.31	-646.94	55.49	0.00	
3615.00†	19.000	175.097	3509.70	681.87	-679.38	58.27	0.00	
3715.00†	19.000	175.097	3604.25	714.43	-711.81	61.06	0.00	
3742.24†	19.000	175.097	3630.00	723.29	-720.65	61.81	0.00	PARKMAN TOP
3815.00†	19.000	175.097	3698.80	746.98	-744.25	63.84	0.00	
3915.00†	19.000	175.097	3793.35	779.54	-776.69	66.62	0.00	
4015.00†	19.000	175.097	3887.90	812.10	-809.13	69.40	0.00	

Planned Wellpath Report

GARCIA 22-25 (REV-A.0) PWP

Page 3 of 5

INTEQ

REFERENCE WELLPATH IDENTIFICATION

Operator	ANADARKO PETROLEUM	Slot	SLOT#06 GARCIA 22-25 (1234'FNL & 1303'FWL)
Area	COLORADO	Well	GARCIA 22-25
Field	WELD COUNTY (ANADARKO)	Wellbore	GARCIA 22-25 PWB
Facility	SEC.25-T4N-R67W		

WELLPATH DATA (92 stations) † = interpolated/extrapolated station

MD [ft]	Inclination [°]	Azimuth [°]	TVD [ft]	Vert Sect [ft]	North [ft]	East [ft]	DLS [°/100ft]	Comments
4115.00†	19.000	175.097	3982.46	844.65	-841.56	72.19	0.00	
4215.00†	19.000	175.097	4077.01	877.21	-874.00	74.97	0.00	
4271.05†	19.000	175.097	4130.00	895.46	-892.18	76.53	0.00	SUSSEX TOP
4315.00†	19.000	175.097	4171.56	909.77	-906.44	77.75	0.00	
4415.00†	19.000	175.097	4266.11	942.32	-938.88	80.53	0.00	
4515.00†	19.000	175.097	4360.66	974.88	-971.32	83.31	0.00	
4615.00†	19.000	175.097	4455.22	1007.44	-1003.75	86.10	0.00	
4715.00†	19.000	175.097	4549.77	1040.00	-1036.19	88.88	0.00	
4815.00†	19.000	175.097	4644.32	1072.55	-1068.63	91.66	0.00	
4873.89†	19.000	175.097	4700.00	1091.72	-1087.73	93.30	0.00	SHANNON TOP
4915.00†	19.000	175.097	4738.87	1105.11	-1101.07	94.44	0.00	
5015.00†	19.000	175.097	4833.42	1137.67	-1133.50	97.23	0.00	
5115.00†	19.000	175.097	4927.97	1170.22	-1165.94	100.01	0.00	
5215.00†	19.000	175.097	5022.53	1202.78	-1198.38	102.79	0.00	
5252.79	19.000	175.097	5058.25	1215.08	-1210.64	103.84	0.00	End of Tangent (S)
5315.00†	17.756	175.097	5117.29	1234.70	-1230.18	105.52	2.00	
5415.00†	15.756	175.097	5213.04	1263.52	-1258.90	107.98	2.00	
5515.00†	13.756	175.097	5309.74	1288.99	-1284.28	110.16	2.00	
5615.00†	11.756	175.097	5407.27	1311.07	-1306.27	112.05	2.00	
5715.00†	9.756	175.097	5505.51	1329.73	-1324.87	113.64	2.00	
5815.00†	7.756	175.097	5604.33	1344.95	-1340.03	114.94	2.00	
5915.00†	5.756	175.097	5703.64	1356.72	-1351.75	115.95	2.00	
6015.00†	3.756	175.097	5803.29	1365.01	-1360.01	116.66	2.00	
6115.00†	1.756	175.097	5903.17	1369.81	-1364.80	117.07	2.00	
6202.79	0.000	175.097	5990.94 ¹	1371.16	-1366.14	117.18	2.00	Drop (S)
6215.00†	0.000	175.097	6003.15	1371.16	-1366.14	117.18	0.00	
6315.00†	0.000	175.097	6103.15	1371.16	-1366.14	117.18	0.00	
6415.00†	0.000	175.097	6203.15	1371.16	-1366.14	117.18	0.00	
6515.00†	0.000	175.097	6303.15	1371.16	-1366.14	117.18	0.00	
6615.00†	0.000	175.097	6403.15	1371.16	-1366.14	117.18	0.00	
6715.00†	0.000	175.097	6503.15	1371.16	-1366.14	117.18	0.00	
6815.00†	0.000	175.097	6603.15	1371.16	-1366.14	117.18	0.00	
6915.00†	0.000	175.097	6703.15	1371.16	-1366.14	117.18	0.00	
7015.00†	0.000	175.097	6803.15	1371.16	-1366.14	117.18	0.00	
7115.00†	0.000	175.097	6903.15	1371.16	-1366.14	117.18	0.00	
7115.85†	0.000	175.097	6904.00	1371.16	-1366.14	117.18	0.00	NIO A TOP
7215.00†	0.000	175.097	7003.15	1371.16	-1366.14	117.18	0.00	
7315.00†	0.000	175.097	7103.15	1371.16	-1366.14	117.18	0.00	
7415.00†	0.000	175.097	7203.15	1371.16	-1366.14	117.18	0.00	
7425.85†	0.000	175.097	7214.00	1371.16	-1366.14	117.18	0.00	CODELL TOP
7515.00†	0.000	175.097	7303.15	1371.16	-1366.14	117.18	0.00	
7615.00†	0.000	175.097	7403.15	1371.16	-1366.14	117.18	0.00	
7715.00†	0.000	175.097	7503.15	1371.16	-1366.14	117.18	0.00	
7815.00†	0.000	175.097	7603.15	1371.16	-1366.14	117.18	0.00	
7840.85†	0.000	175.097	7629.00	1371.16	-1366.14	117.18	0.00	JSAND TOP

Planned Wellpath Report

GARCIA 22-25 (REV-A.0) PWP

Page 4 of 5

INTEQ

REFERENCE WELLPATH IDENTIFICATION

Operator	ANADARKO PETROLEUM	Slot	SLOT#06 GARCIA 22-25 (1234'FNL & 1303'FWL)
Area	COLORADO	Well	GARCIA 22-25
Field	WELD COUNTY (ANADARKO)	Wellbore	GARCIA 22-25 PWB
Facility	SEC.25-T4N-R67W		

WELLPATH DATA (92 stations) † = interpolated/extrapolated station

MD [ft]	Inclination [°]	Azimuth [°]	TVD [ft]	Vert Sect [ft]	North [ft]	East [ft]	DLS [°/100ft]	Comments
7915.00†	0.000	175.097	7703.15	1371.16	-1366.14	117.18	0.00	
7996.85	0.000	175.097	7785.00	1371.16	-1366.14	117.18	0.00	End of Tangent

HOLE & CASING SECTIONS Ref Wellbore: GARCIA 22-25 PWB Ref Wellpath: GARCIA 22-25 (REV-A.0) PWP

String/Diameter	Start MD [ft]	End MD [ft]	Interval [ft]	Start TVD [ft]	End TVD [ft]	Start N/S [ft]	Start E/W [ft]	End N/S [ft]	End E/W [ft]
12.25in Open Hole	15.00	750.00	735.00	15.00	750.00	0.00	0.00	0.00	0.00
8.625in Casing Surface	15.00	750.00	735.00	15.00	750.00	0.00	0.00	0.00	0.00
7.875in Open Hole	750.00	7996.85	7246.85	750.00	7785.00	0.00	0.00	-1366.14	117.18

TARGETS

Name	MD [ft]	TVD [ft]	North [ft]	East [ft]	Grid East [srv ft]	Grid North [srv ft]	Latitude	Longitude	Shape
GARCIA 22-25 HARDLINE 5'N OF GEO TARGET		6000.00	-1361.14	117.18	3183136.39	1346617.38	40°16'58.813"N	104°50'36.852"W	point
1) GARCIA 22-25 GEO TARGET 50' RADIUS (2600'FNL & 1440'FWL, REV-1)		6000.00	-1366.14	117.18	3183136.43	1346612.38	40°16'58.764"N	104°50'36.852"W	circle

SURVEY PROGRAM Ref Wellbore: GARCIA 22-25 PWB Ref Wellpath: GARCIA 22-25 (REV-A.0) PWP

Start MD [ft]	End MD [ft]	Positional Uncertainty Model	Log Name/Comment	Wellbore
15.00	7996.85	MTC (Collar, post-2000) (Standard)		GARCIA 22-25 PWB

Planned Wellpath Report

GARCIA 22-25 (REV-A.0) PWP

Page 5 of 5

INTEQ

REFERENCE WELLPATH IDENTIFICATION

Operator	ANADARKO PETROLEUM	Slot	SLOT#06 GARCIA 22-25 (1234'FNL & 1303'FWL)
Area	COLORADO	Well	GARCIA 22-25
Field	WELD COUNTY (ANADARKO)	Wellbore	GARCIA 22-25 PWB
Facility	SEC.25-T4N-R67W		

WELLPATH COMMENTS

MD [ft]	Inclination [°]	Azimuth [°]	TVD [ft]	Comment
3742.24	19.000	175.097	3630.00	PARKMAN TOP
4271.05	19.000	175.097	4130.00	SUSSEX TOP
4873.89	19.000	175.097	4700.00	SHANNON TOP
7115.85	0.000	175.097	6904.00	NIO A TOP
7425.85	0.000	175.097	7214.00	CODELL TOP
7840.85	0.000	175.097	7629.00	JSAND TOP