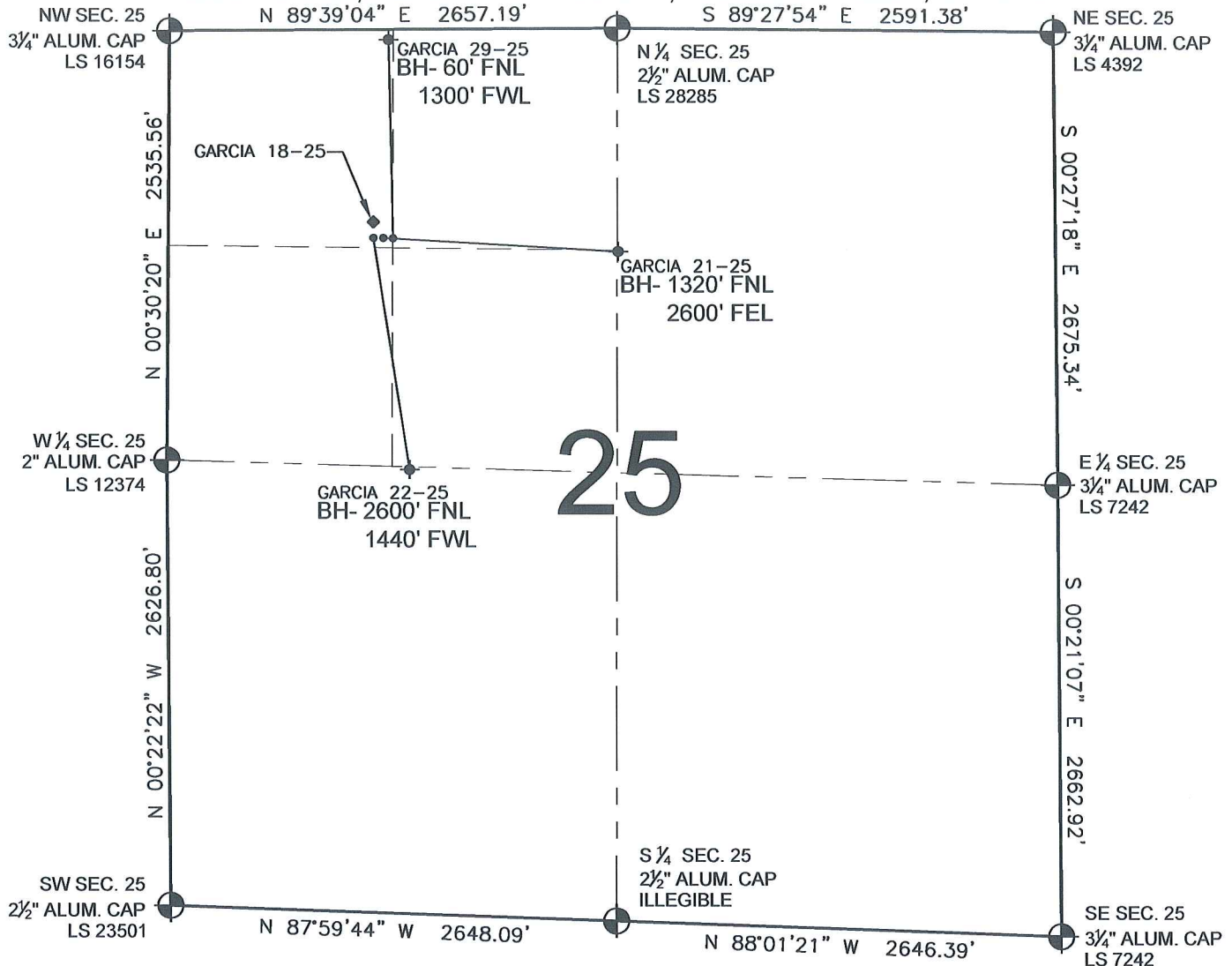


PAD DRAWING - GARCIA 3 PAD

SECTION 25, TOWNSHIP 4 NORTH, RANGE 67 WEST, 6TH P.M.



NOTES:

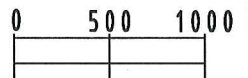
- THIS SURVEY WAS DONE BY GPS METHODS AND CONFORMS TO THE MINIMUM STANDARDS SET BY THE C.O.G.C.C., RULE NO. 215 (PDOP VALUE IS LESS THAN 6.0, LATITUDE AND LONGITUDE ARE ACCURATE TO 5 DECIMAL PLACES, AND GPS OBSERVATIONS ARE DIFFERENTIAL AND DONE BY QUALIFIED PERSONNEL.)
- ELEVATIONS SHOWN AT THE WELL HEAD, AS WELL AS HORIZONTAL CONTROL, ARE BASED ON GPS-RTK VALUES DERIVED FROM DOING 2-HOUR STATIC GPS SESSIONS AND REDUCTIONS USING O.P.U.S. SOLUTIONS.
VERTICAL = NAVD88; HORIZONTAL = NAD83/92
- THE BEARINGS SHOWN HEREON ARE BASED ON GPS OBSERVATIONS BETWEEN THE MONUMENTS SHOWN HEREON AS FOUND ON THE FIELD DATE BELOW.
- DISTANCES SHOWN ARE AT GROUND LEVEL, AS MEASURED IN THE FIELD, WITH TIES TO WELLS MEASURED AT A PERPENDICULAR TO SECTION LINES.

LEGEND

- = EXISTING MONUMENT
 = BOTTOM HOLE
 BH= BOTTOM HOLE
 = PROPOSED WELL
 = EXISTING WELL

NOTES:

- GARCIA 29-25 TO BE AT 1234' FNL, 1335' FWL.
 BOTTOM HOLE AT 60' FNL & 1300' FWL.
 GARCIA 21-25 TO BE AT 1234' FNL, 1319' FWL.
 BOTTOM HOLE AT 1320' FNL & 2600' FEL.
 GARCIA 22-25 TO BE AT 1234' FNL, 1303' FWL.
 BOTTOM HOLE AT 2600' FNL & 1440' FWL.
 GARCIA 18-25 IS 1186' FNL, 1300' FWL.



SCALE: 1"=1000'

REVISIONS

INITIAL	DATE

PREPARED BY:

PFS

Petroleum Field Services, LLC
1801 W. 13th Ave.
Denver, CO 80204



KERR-MCGEE OIL & GAS ONSHORE LP

FIELD DATE:
06-25-09

DRAWING DATE:
06-26-09

BY:
SMF

PAD NAME:

GARCIA 3 PAD

SURFACE LOCATION:

WELD COUNTY, COLORADO
NW 1/4 NW 1/4, SEC. 25, T4N, R67W
NE 1/4 NW 1/4, SEC. 25, T4N, R67W



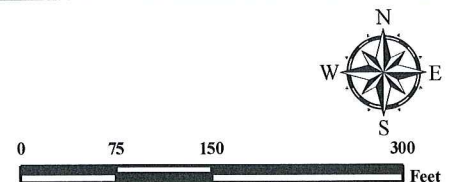
A. Existing Well GARCIA 18-25 is 51' NW.

E. Edge of River is 348' NW.

B. Proposed GARCIA 22-25.

C. Proposed GARCIA 21-25.

D. Proposed GARCIA 29-25.



Legend

- | | |
|----------------------|---------------------|
| Proposed Well | Building/Residence |
| Existing Well | Oil & Gas Equipment |
| Plugged Well | Water Body |
| Manhole | Utility Box |
| CattleGuard/Gate | Railroad |
| Bridge | Sewer |
| ECD | Fence |
| 400' Radius | Overhead Power Line |
| Facilities Enclosure | Pipeline |
| | Access Road |
| | Ditch/Canal |

400ft Radius Map

GARCIA 21-25 PAD Multi Well Pad

Surface Location: T4N R67W S25
Description of surface uses : Open Field

Field Date: 06/25/2009
Drawing Date: 06/26/2009
Drafter: BHF
Checked By: MPS

Aerial Photo supplied by NAIP - 2005

Prepared for:
**KERR-MCGEE OIL &
GAS ONSHORE LP**



Use our resources to find yours!
www.petro-fs.com

1801 W. 13th Ave Denver, CO 80204 (303) 928-7128	111 E. Third Street Suite 207 Rifle, CO 81650 (970) 625-4740
--	---