



August 14, 2009

Department of Natural Resources
Oil and Gas Conservation Commission
The Chancery Building
1120 Lincoln St., Suite 801
Denver, CO 80203

Re: **20 Day Certification Letter - 318A-e**
P VILLE FEDERAL 31-7
Township 3 North, Range 66 West, Section 7: SE/4NW/4
Unit Spacing:: 03N-66W-07 W/2NW/4
03N-67W-12 E/2NE/4
Weld County, Colorado

Ladies/Gentlemen:

Kerr-McGee Oil and Gas Onshore LP ("KMG") hereby certifies to the Director that a twenty (20) day notice has been given by certified mail to all owners in the proposed wellbore spacing unit. We have not received any objections to such well location, proposed spacing unit, or additional producing formation. KMG hereby requests the Director to approve the boundary well.

If you have any questions or issues regarding this permit, please contact Cheryl Light at (720) 929-6461.

Very truly yours,

Kerr-McGee Oil and Gas Onshore LP

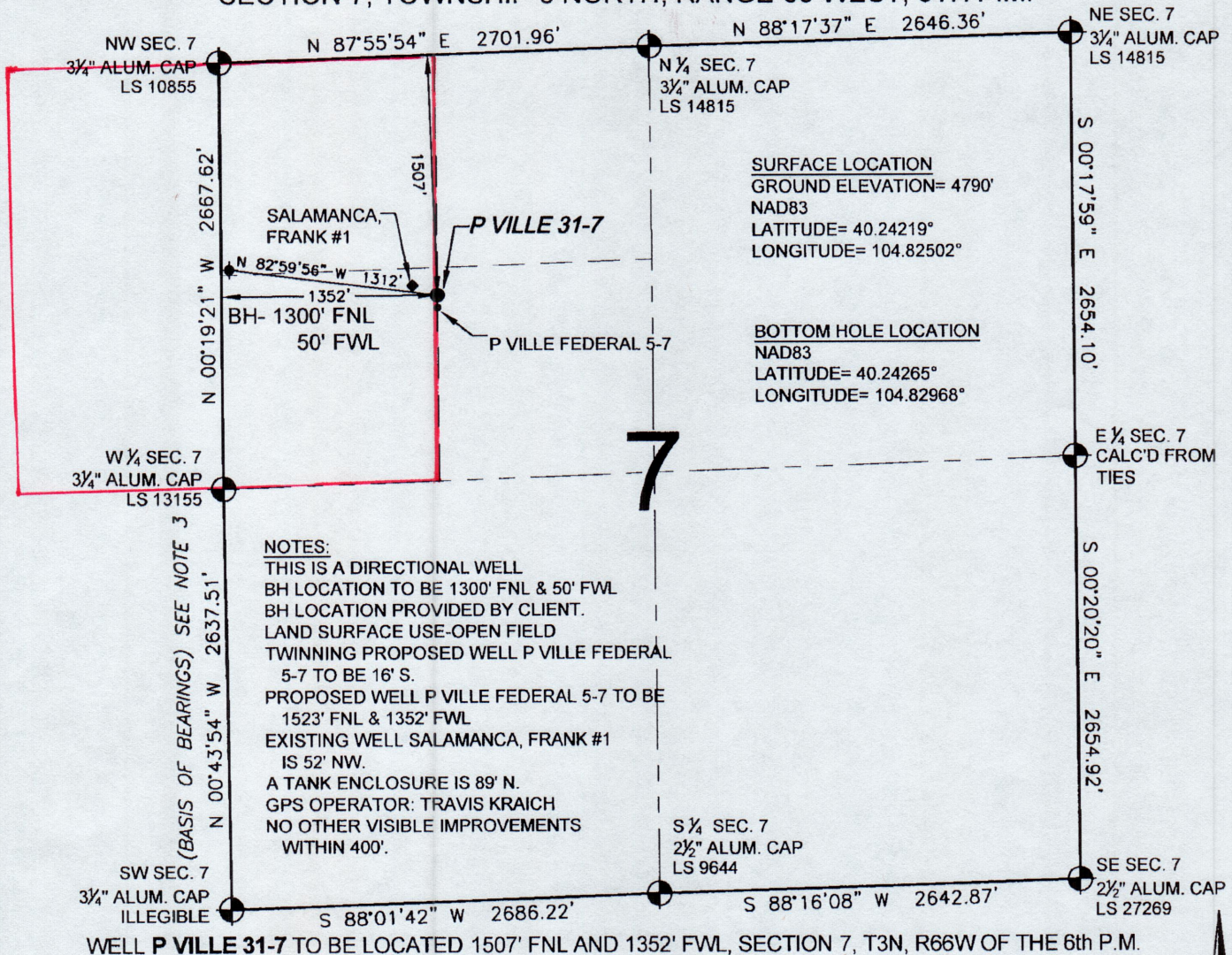
A handwritten signature in blue ink, appearing to read 'Cheryl Light'.

Cheryl Light
Senior Regulatory Analyst

:cl
Enclosure

WELL LOCATION CERTIFICATE: P VILLE 31-7

SECTION 7, TOWNSHIP 3 NORTH, RANGE 66 WEST, 6TH P.M.



LEGEND

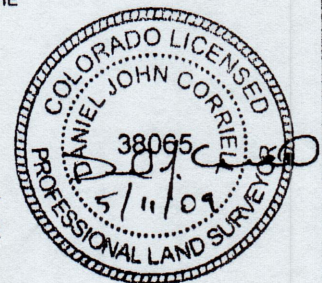
- = EXISTING MONUMENT ♦ = BOTTOM HOLE BH = BOTTOM HOLE
● = PROPOSED WELL ♦ = EXISTING WELL

NOTES:

- THIS SURVEY WAS DONE BY GPS METHODS AND CONFORMS TO THE MINIMUM STANDARDS SET BY THE C.O.G.C.C., RULE NO. 215 (PDOP VALUE IS LESS THAN 6.0, LATITUDE AND LONGITUDE ARE ACCURATE TO 5 DECIMAL PLACES, AND GPS OBSERVATIONS ARE DIFFERENTIAL AND DONE BY QUALIFIED PERSONNEL).
- ELEVATIONS SHOWN AT THE WELL HEAD, AS WELL AS HORIZONTAL CONTROL, ARE BASED ON GPS-RTK VALUES DERIVED FROM DOING 2-HOUR STATIC GPS SESSIONS AND REDUCTIONS USING O.P.U.S. SOLUTIONS.
VERTICAL = NAVD88; HORIZONTAL = NAD83/92
- THE BEARINGS SHOWN HEREON ARE BASED ON GPS OBSERVATIONS BETWEEN THE MONUMENTS SHOWN HEREON AS FOUND ON THE FIELD DATE BELOW.
- DISTANCES SHOWN ARE AT GROUND LEVEL, AS MEASURED IN THE FIELD, WITH TIES TO WELLS MEASURED AT A PERPENDICULAR TO SECTION LINES.

I, DANIEL J. CORRIELL, A LICENSED PROFESSIONAL LAND SURVEYOR IN THE STATE OF COLORADO DO HEREBY CERTIFY TO **KERR-MCGEE OIL & GAS ONSHORE LP**, THAT THE SURVEY AND WELL LOCATION CERTIFICATE SHOWN HEREON WERE DONE BY ME OR UNDER MY DIRECT SUPERVISION AND THAT THE DRAWING SHOWN HEREON ACCURATELY DEPICTS THE PROPOSED LOCATION OF THE WELL **P VILLE 31-7**. THIS CERTIFICATE DOES NOT REPRESENT A LAND SURVEY PLAT OR IMPROVEMENT SURVEY PLAT AS DEFINED BY C.R.S. 38-51-102 AND CANNOT BE RELIED UPON TO DETERMINE OWNERSHIP.

DANIEL J. CORRIELL, PLS 38065
COLORADO LICENSED PROFESSIONAL LAND SURVEYOR
FOR AND ON BEHALF OF P.F.S., LLC



PREPARED BY:	FIELD DATE:	WELL NAME:
PFS	02-26-09	P VILLE 31-7
1801 W. 13th Ave. Denver, CO 80204	DRAWING DATE:	SURFACE LOCATION:
	03-03-09	WELD COUNTY, COLORADO
BY:		SE 1/4 NW 1/4, SEC. 7, T3N, R66W
SMF		

NOTICE: ACCORDING TO COLORADO LAW YOU MUST COMMENCE ANY LEGAL ACTION BASED UPON ANY DEFECT IN THIS SURVEY WITHIN THREE YEARS AFTER YOU FIRST DISCOVER SUCH DEFECT. IN NO EVENT MAY ANY ACTION BASED UPON ANY DEFECT IN THIS SURVEY BE COMMENCED MORE THAN TEN YEARS FROM THIS SAID DATE OF THIS CERTIFICATION SHOWN HEREON.

P VILLE 31-7 SENW Sec. 7 T3N-R66W



LEGEND



Proposed 160 acre Spacing Unit (Solid line).



Bottom Hole Located SW/4NW/4, Sec. 7-T3N-R66W (Dashed line).

This 1/4 Section has less than 8 bottom hole wells producing from the Codell, Niobrara & J Sand Formations.