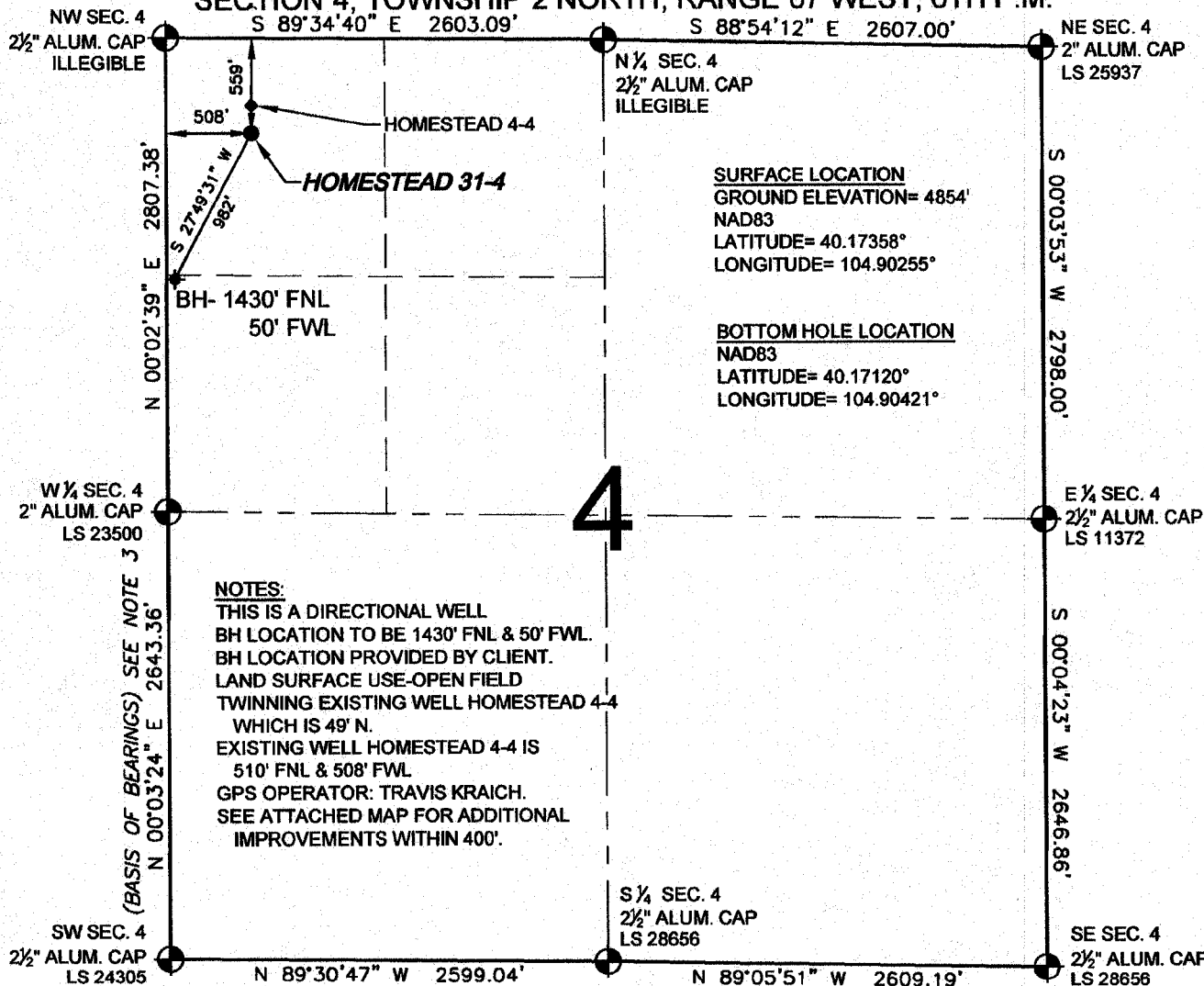


# WELL LOCATION CERTIFICATE: HOMESTEAD 31-4

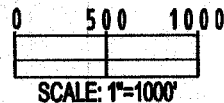
SECTION 4, TOWNSHIP 2 NORTH, RANGE 67 WEST, 6TH P.M.



WELL HOMESTEAD 31-4 TO BE LOCATED 559' FNL AND 508' FWL, SECTION 4, T2N, R67W OF THE 6th P.M.

## LEGEND

- ⊕ = EXISTING MONUMENT    ⊕ = BOTTOM HOLE    BH = BOTTOM HOLE  
 ● = PROPOSED WELL    ● = EXISTING WELL

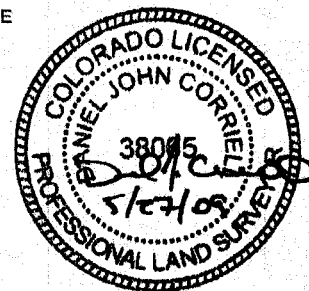


## NOTES:

- THIS SURVEY WAS DONE BY GPS METHODS AND CONFORMS TO THE MINIMUM STANDARDS SET BY THE C.O.G.C.C., RULE NO. 215 (PDOP VALUE IS LESS THAN 6.0, LATITUDE AND LONGITUDE ARE ACCURATE TO 5 DECIMAL PLACES, AND GPS OBSERVATIONS ARE DIFFERENTIAL AND DONE BY QUALIFIED PERSONNEL.)
- ELEVATIONS SHOWN AT THE WELL HEAD, AS WELL AS HORIZONTAL CONTROL, ARE BASED ON GPS-RTK VALUES DERIVED FROM DOING 2-HOUR STATIC GPS SESSIONS AND REDUCTIONS USING O.P.U.S. SOLUTIONS.  
VERTICAL = NAVD88; HORIZONTAL = NAD83/92
- THE BEARINGS SHOWN HEREON ARE BASED ON GPS OBSERVATIONS BETWEEN THE MONUMENTS SHOWN HEREON AS FOUND ON THE FIELD DATE BELOW.
- DISTANCES SHOWN ARE AT GROUND LEVEL, AS MEASURED IN THE FIELD, WITH TIES TO WELLS MEASURED AT A PERPENDICULAR TO SECTION LINES.

I, DANIEL J. CORRIELL, A LICENSED PROFESSIONAL LAND SURVEYOR IN THE STATE OF COLORADO DO HEREBY CERTIFY TO **KERR-MCGEE OIL & GAS ONSHORE LP**, THAT THE SURVEY AND WELL LOCATION CERTIFICATE SHOWN HEREON WERE DONE BY ME OR UNDER MY DIRECT SUPERVISION AND THAT THE DRAWING SHOWN HEREON ACCURATELY DEPICTS THE PROPOSED LOCATION OF THE WELL **HOMESTEAD 31-4**. THIS CERTIFICATE DOES NOT REPRESENT A LAND SURVEY PLAT OR IMPROVEMENT SURVEY PLAT AS DEFINED BY C.R.S. 38-51-102 AND CANNOT BE RELIED UPON TO DETERMINE OWNERSHIP.

DANIEL J. CORRIELL, PLS 38065  
COLORADO LICENSED PROFESSIONAL LAND SURVEYOR  
FOR AND ON BEHALF OF P.F.S., LLC

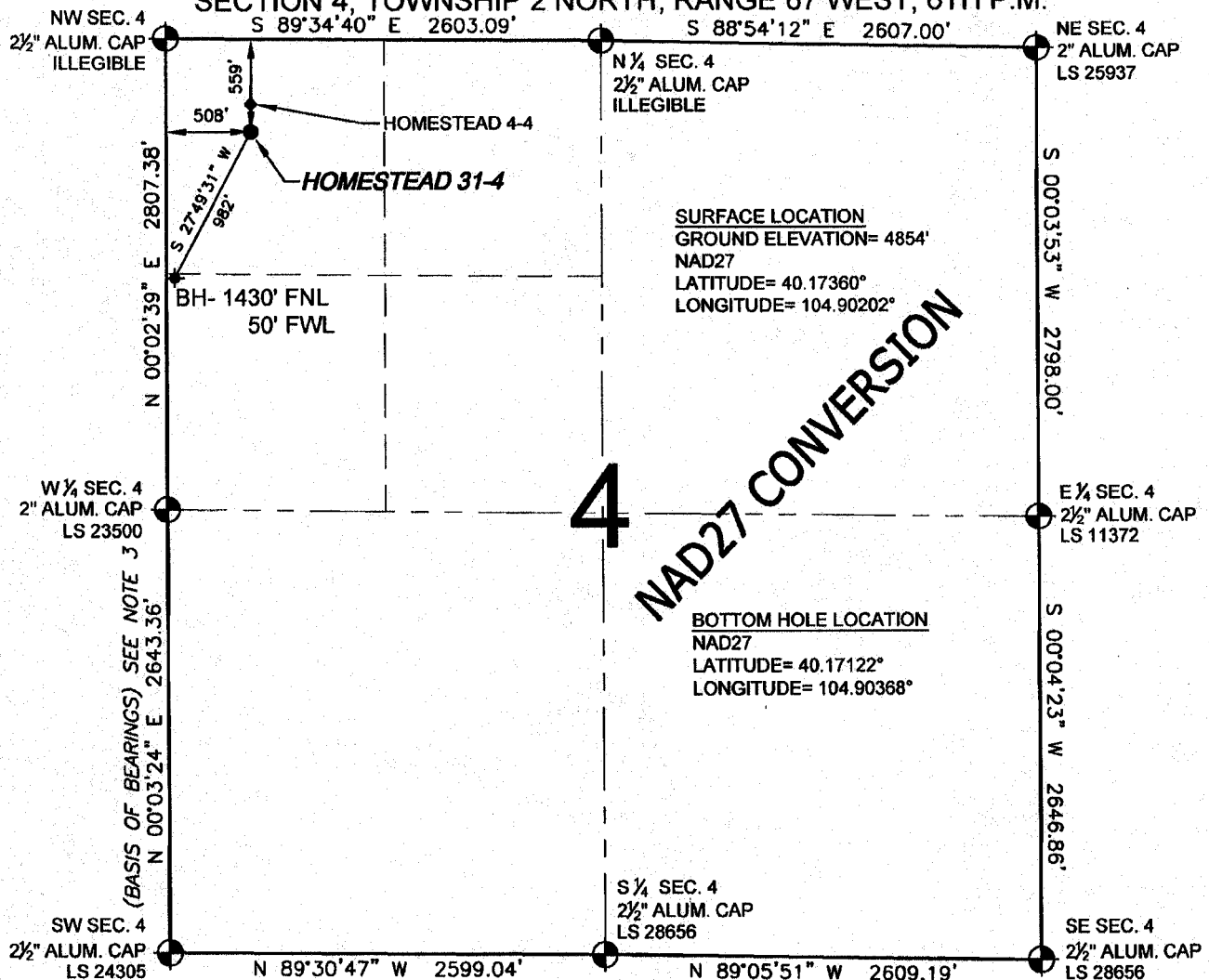


PREPARED BY:	FIELD DATE:	WELL NAME:
PFS	05-21-09	HOMESTEAD 31-4
DRAWING DATE:	SURFACE LOCATION:	
05-26-09	WELD COUNTY, COLORADO	
BY:	NW 1/4 NW 1/4, SEC. 4, T2N, R67W	
SMF		

NOTICE: ACCORDING TO COLORADO LAW YOU MUST COMMENCE ANY LEGAL ACTION BASED UPON ANY DEFECT IN THIS SURVEY WITHIN THREE YEARS AFTER YOU FIRST DISCOVER SUCH DEFECT. IN NO EVENT MAY ANY ACTION BASED UPON ANY DEFECT IN THIS SURVEY BE COMMENCED MORE THAN TEN YEARS FROM THIS SAID DATE OF THIS CERTIFICATION SHOWN HEREON.

# EXHIBIT: NAD27 CONVERSION

SECTION 4, TOWNSHIP 2 NORTH, RANGE 67 WEST, 6TH P.M.



WELL **HOMESTEAD 31-4** TO BE LOCATED 559' FNL AND 508' FWL, SECTION 4, T2N, R67W OF THE 6th P.M.

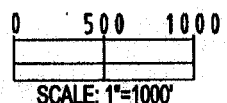
## NOTES:

- THIS SURVEY WAS DONE BY GPS METHODS AND CONFORMS TO THE MINIMUM STANDARDS SET BY THE C.O.G.C.C., RULE NO. 215 (PDOP VALUE IS LESS THAN 6.0, LATITUDE AND LONGITUDE ARE ACCURATE TO 5 DECIMAL PLACES, AND GPS OBSERVATIONS ARE DIFFERENTIAL AND DONE BY QUALIFIED PERSONNEL.)
- ELEVATIONS SHOWN AT THE WELL HEAD, AS WELL AS HORIZONTAL CONTROL, ARE BASED ON GPS-RTK VALUES DERIVED FROM DOING 2-HOUR STATIC GPS SESSIONS AND REDUCTIONS USING O.P.U.S. SOLUTIONS.  
VERTICAL = NAVD88; HORIZONTAL = NAD83/92
- THE BEARINGS SHOWN HEREON ARE BASED ON GPS OBSERVATIONS BETWEEN THE MONUMENTS SHOWN HEREON AS FOUND ON THE FIELD DATE BELOW.
- DISTANCES SHOWN ARE AT GROUND LEVEL, AS MEASURED IN THE FIELD, WITH TIES TO WELLS MEASURED AT A PERPENDICULAR TO SECTION LINES.

## LEGEND

- = EXISTING MONUMENT   
 = BOTTOM HOLE   
 BH = BOTTOM HOLE  
 = PROPOSED WELL   
 = EXISTING WELL

NOTE: LATITUDE AND LONGITUDE SHOWN WERE CONVERTED FROM NAD83 USING CORPSCON 6.0 (PROGRAM). PFS DOES NOT WARRANT OR GUARANTEE THEIR ACCURACY.



PREPARED BY:	FIELD DATE:	WELL NAME:
<b>PFS</b> Pulsar Field Services, LLC 1801 W. 13th Ave. Denver, CO 80202	05-21-09	HOMESTEAD 31-4
	DRAWING DATE:	SURFACE LOCATION:
	05-26-09	WELD COUNTY, COLORADO
	BY:	NW 1/4 NW 1/4, SEC. 4, T2N, R67W
	SMF	

NOTICE: ACCORDING TO COLORADO LAW YOU MUST COMMENCE ANY LEGAL ACTION BASED UPON ANY DEFECT IN THIS SURVEY WITHIN THREE YEARS AFTER YOU FIRST DISCOVER SUCH DEFECT. IN NO EVENT MAY ANY ACTION BASED UPON ANY DEFECT IN THIS SURVEY BE COMMENCED MORE THAN TEN YEARS FROM THIS SAID DATE OF THIS CERTIFICATION SHOWN HEREON.