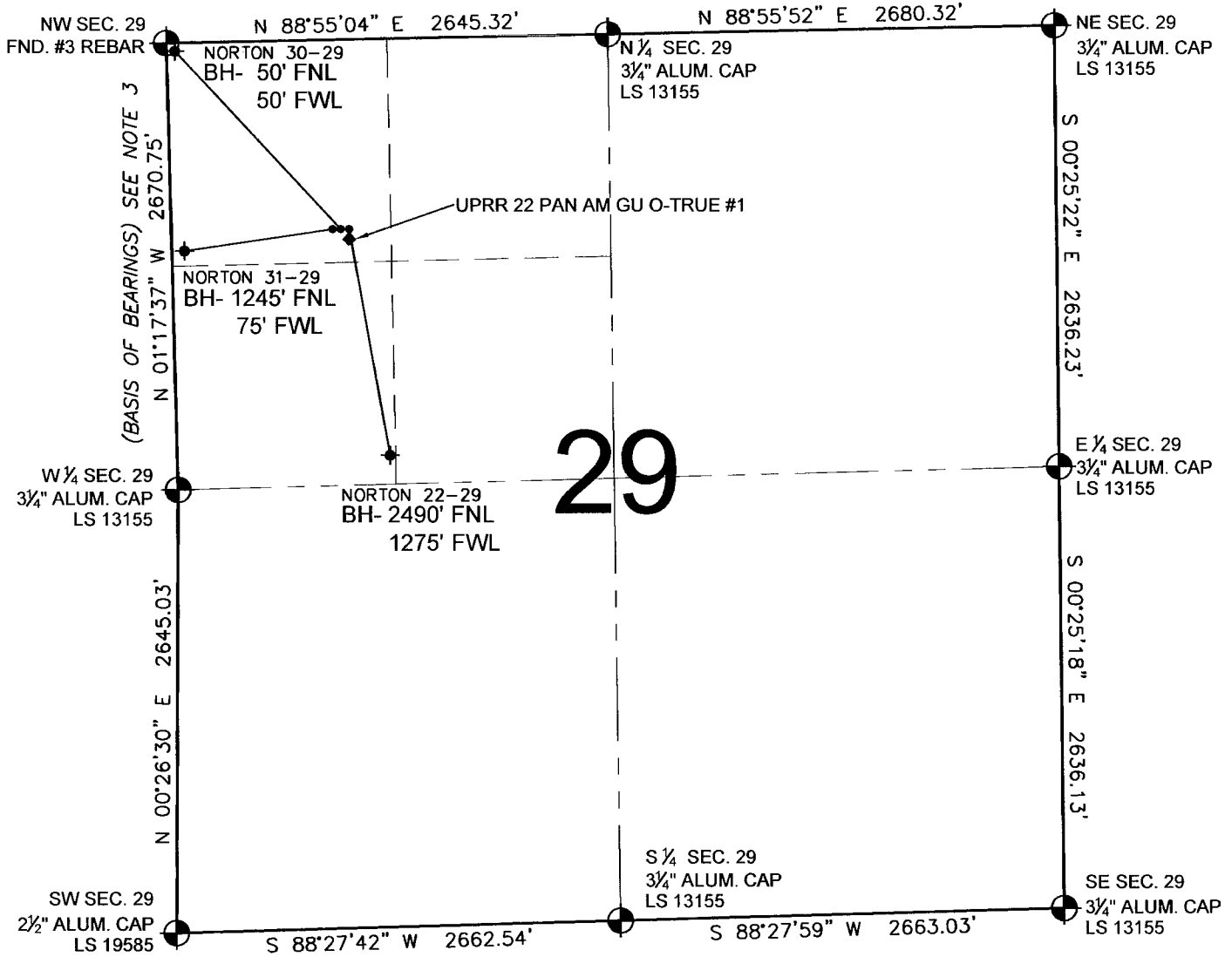


# PAD DRAWING - NORTON 3 PAD

## SECTION 29, TOWNSHIP 3 NORTH, RANGE 66 WEST, 6TH P.M.



### LEGEND

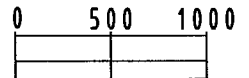
- ⊕ = EXISTING MONUMENT    ⬇ = BOTTOM HOLE    BH= BOTTOM HOLE
- = PROPOSED WELL       ◆ = EXISTING WELL

### NOTES:

- NORTON 31-29 TO BE AT 1132' FNL, 967' FWL.
- BOTTOM HOLE AT 1245' FNL & 75' FWL.
- NORTON 30-29 TO BE AT 1132' FNL, 997' FWL.
- BOTTOM HOLE AT 50' FNL & 50' FWL.
- NORTON 22-29 TO BE AT 1132' FNL, 1027' FWL.
- BOTTOM HOLE AT 2490' FNL & 1275' FWL.
- UPRR 22 PAN AM GU O-TRUE #1 IS AT 1180' FNL, 1026' FWL.

### NOTES:

1. THIS SURVEY WAS DONE BY GPS METHODS AND CONFORMS TO THE MINIMUM STANDARDS SET BY THE C.O.G.C.C., RULE NO. 215 (PDOF VALUE IS LESS THAN 6.0, LATITUDE AND LONGITUDE ARE ACCURATE TO 5 DECIMAL PLACES, AND GPS OBSERVATIONS ARE DIFFERENTIAL AND DONE BY QUALIFIED PERSONNEL.)
2. ELEVATIONS SHOWN AT THE WELL HEAD, AS WELL AS HORIZONTAL CONTROL, ARE BASED ON GPS-RTK VALUES DERIVED FROM DOING 2-HOUR STATIC GPS SESSIONS AND REDUCTIONS USING O.P.U.S. SOLUTIONS.  
VERTICAL = NAVD88;      HORIZONTAL = NAD83/92
3. THE BEARINGS SHOWN HEREON ARE BASED ON GPS OBSERVATIONS BETWEEN THE MONUMENTS SHOWN HEREON AS FOUND ON THE FIELD DATE BELOW.
4. DISTANCES SHOWN ARE AT GROUND LEVEL, AS MEASURED IN THE FIELD, WITH TIES TO WELLS MEASURED AT A PERPENDICULAR TO SECTION LINES.



SCALE: 1"=1000'

REVISIONS	
INITIAL	DATE
SMF	07-09-09

PREPARED BY:

**PFS**  
Petroleum Field Services, LLC  
1801 W. 13th Ave.  
Denver, CO 80204

KERR-MCGEE OIL & GAS ONSHORE LP

FIELD DATE:  
03-06-09

PAD NAME:  
NORTON 3 PAD

DRAWING DATE:  
03-12-09

SURFACE LOCATION:

BY:  
CP

WELD COUNTY, COLORADO  
NW 1/4 NW 1/4, SEC. 29, T3N, R66W