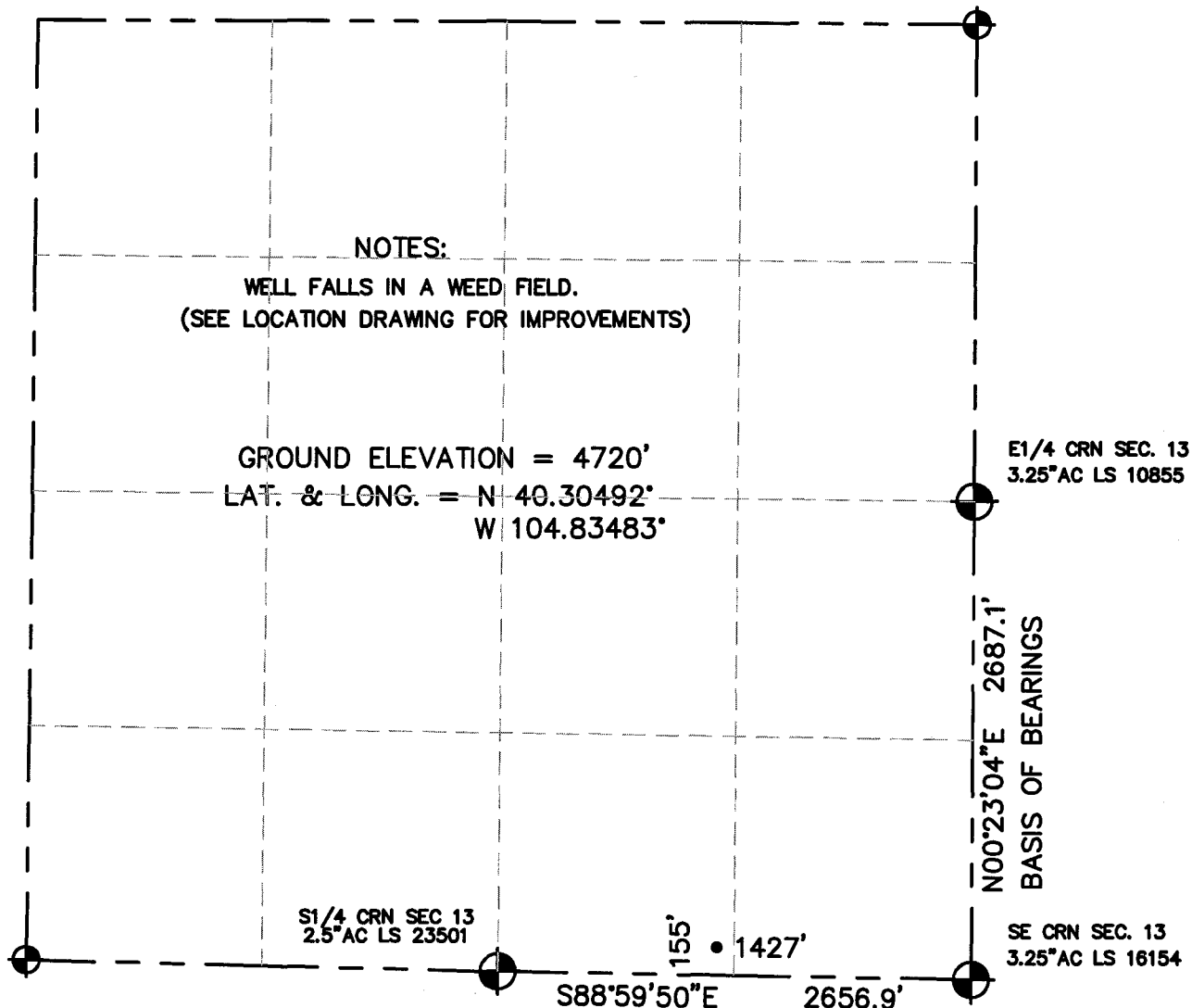


WELL LOCATION CERTIFICATE

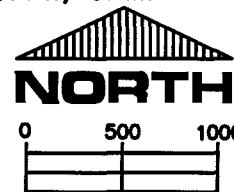
SECTION 13, TOWNSHIP 4 NORTH, RANGE 67 WEST, 6TH P.M.



I HEREBY STATE TO PETROLEUM DEV. CORP. THAT THIS WELL LOCATION CERTIFICATE FOR THE WELL BERNHARDT 13T IS LOCATED 155' FSL & 1427' FEL, SEC. 13, T4N, R67W, 6PM.

LEGEND

- = FOUND MONUMENT
- = PROPOSED WELL
- = IMPROVEMENTS (AS LABELED)



SCALE 1" = 1000'

ELEVATION SOURCE = USGS 7.5' QUAD.MAP CONTOURS
NGVD 1929 DATUM.

LAT. & LONG. ARE DIFFERENTIALLY CORRECTED (NAD'83)
USING (DGPS) WITH (PDOP) VALUES LESS THAN SIX (6).

SHOWN DISTANCES ARE FIELD MEASURED - EXTERIOR SECTION LINES
ARE DRAWN TO SCALE (BEST APPROX. OR FOUND MONUMENT).

DISTANCES TO WELL SHOWN PERPENDICULAR
TO SECTION LINES.

THOMAS G. CARLSON, PLS 24657
HORSESHOE SURVEYING, LLC

THIS IS NOT A MONUMENTED BOUNDARY SURVEY, IT IS ONLY A
DRAWING INTENDED TO DEPICT THE WELL LOCATION TO SECTION LINES.

PREPARED BY: HORSESHOE SURVEYING, LLC
PO BOX 150458
LAKEWOOD, CO 80215
(720)872-0196

DRAWING DATE:
7-22-09

FIELD DATE:
5-14-08

BY: TGC

CHKD:

WELL NAME:

BERNHARDT 13T

LOCATION:

WELD COUNTY, CO
SE1/4, SEC. 13, T4N, R67W, 6TH P.M.

JOB NO.

SHEET NO.

1 OF 1