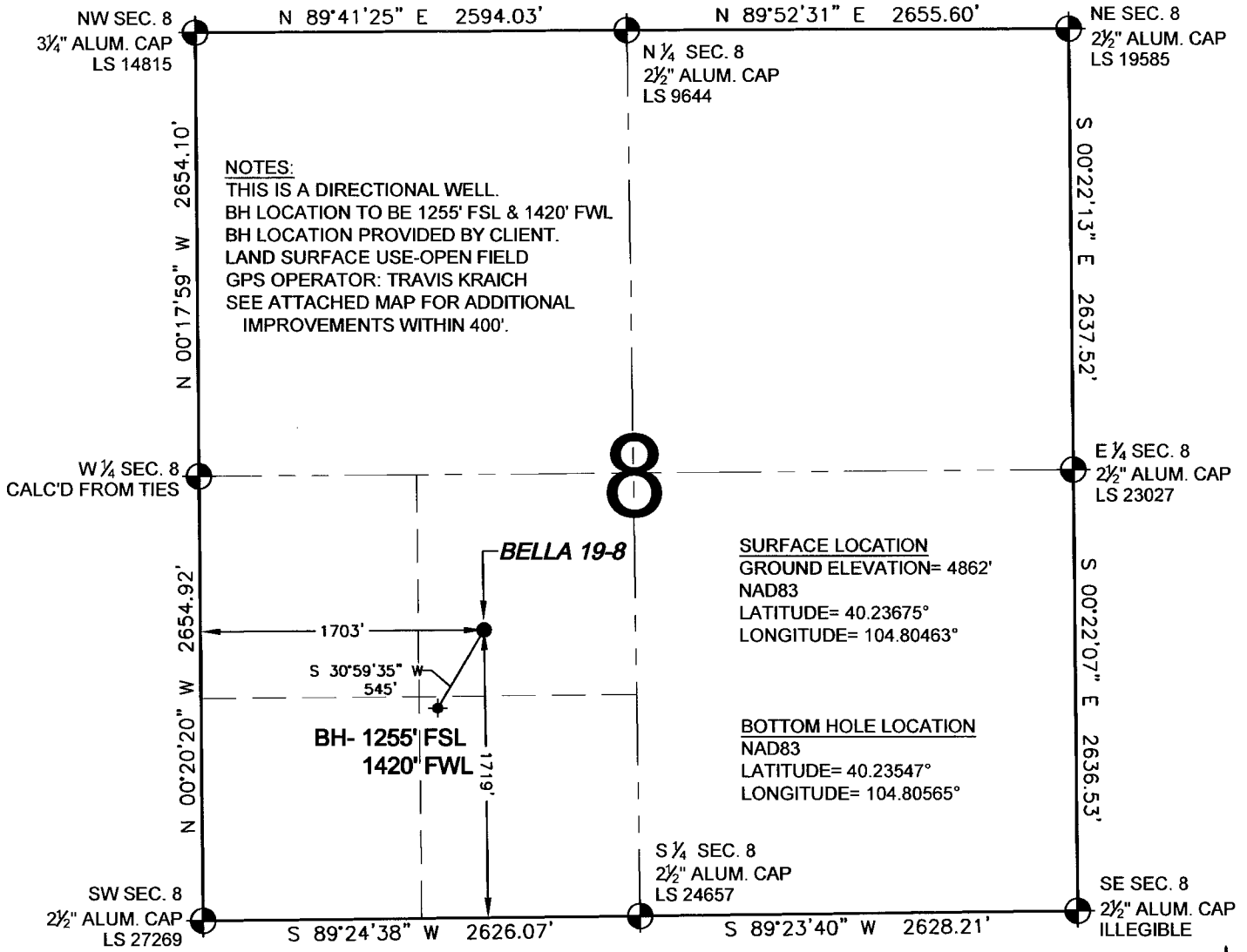


WELL LOCATION CERTIFICATE: BELLA 19-8

SECTION 8, TOWNSHIP 3 NORTH, RANGE 66 WEST, 6TH P.M.



NOTES:
 THIS IS A DIRECTIONAL WELL.
 BH LOCATION TO BE 1255' FSL & 1420' FWL
 BH LOCATION PROVIDED BY CLIENT.
 LAND SURFACE USE-OPEN FIELD
 GPS OPERATOR: TRAVIS KRAICH
 SEE ATTACHED MAP FOR ADDITIONAL
 IMPROVEMENTS WITHIN 400'.

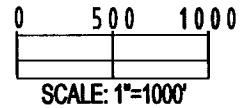
SURFACE LOCATION
 GROUND ELEVATION= 4862'
 NAD83
 LATITUDE= 40.23675°
 LONGITUDE= 104.80463°

BOTTOM HOLE LOCATION
 NAD83
 LATITUDE= 40.23547°
 LONGITUDE= 104.80565°

WELL BELLA 19-8 TO BE LOCATED 1719' FSL AND 1703' FWL, SECTION 8, T3N, R66W OF THE 6th P.M.

LEGEND

- ⊕ = EXISTING MONUMENT ◆ = BOTTOM HOLE BH = BOTTOM HOLE
- = PROPOSED WELL ◆ = EXISTING WELL

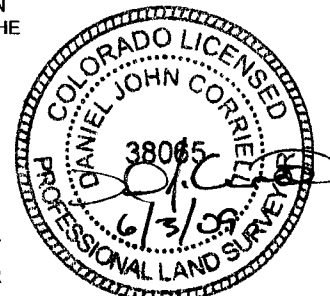


NOTES:

1. THIS SURVEY WAS DONE BY GPS METHODS AND CONFORMS TO THE MINIMUM STANDARDS SET BY THE C.O.G.C.C., RULE NO. 215 (PDOP VALUE IS LESS THAN 6.0, LATITUDE AND LONGITUDE ARE ACCURATE TO 5 DECIMAL PLACES, AND GPS OBSERVATIONS ARE DIFFERENTIAL AND DONE BY QUALIFIED PERSONNEL.)
2. ELEVATIONS SHOWN AT THE WELL HEAD, AS WELL AS HORIZONTAL CONTROL, ARE BASED ON GPS-RTK VALUES DERIVED FROM DOING 2-HOUR STATIC GPS SESSIONS AND REDUCTIONS USING O.P.U.S. SOLUTIONS.
 VERTICAL = NAVD88; HORIZONTAL = NAD83/92
3. THE BEARINGS SHOWN HEREON ARE BASED ON GPS OBSERVATIONS BETWEEN THE MONUMENTS SHOWN HEREON AS FOUND ON THE FIELD DATE BELOW.
4. DISTANCES SHOWN ARE AT GROUND LEVEL, AS MEASURED IN THE FIELD, WITH TIES TO WELLS MEASURED AT A PERPENDICULAR TO SECTION LINES.

I, DANIEL J. CORRIELL, A LICENSED PROFESSIONAL LAND SURVEYOR IN THE STATE OF COLORADO DO HEREBY CERTIFY TO **KERR-MCGEE OIL & GAS ONSHORE LP**, THAT THE SURVEY AND WELL LOCATION CERTIFICATE SHOWN HEREON WERE DONE BY ME OR UNDER MY DIRECT SUPERVISION AND THAT THE DRAWING SHOWN HEREON ACCURATELY DEPICTS THE PROPOSED LOCATION OF THE WELL **BELLA 19-8**. THIS CERTIFICATE DOES NOT REPRESENT A LAND SURVEY PLAT OR IMPROVEMENT SURVEY PLAT AS DEFINED BY C.R.S. 38-51-102 AND CANNOT BE RELIED UPON TO DETERMINE OWNERSHIP.

DANIEL J. CORRIELL, PLS 38065
 COLORADO LICENSED PROFESSIONAL LAND SURVEYOR
 FOR AND ON BEHALF OF P.F.S., LLC

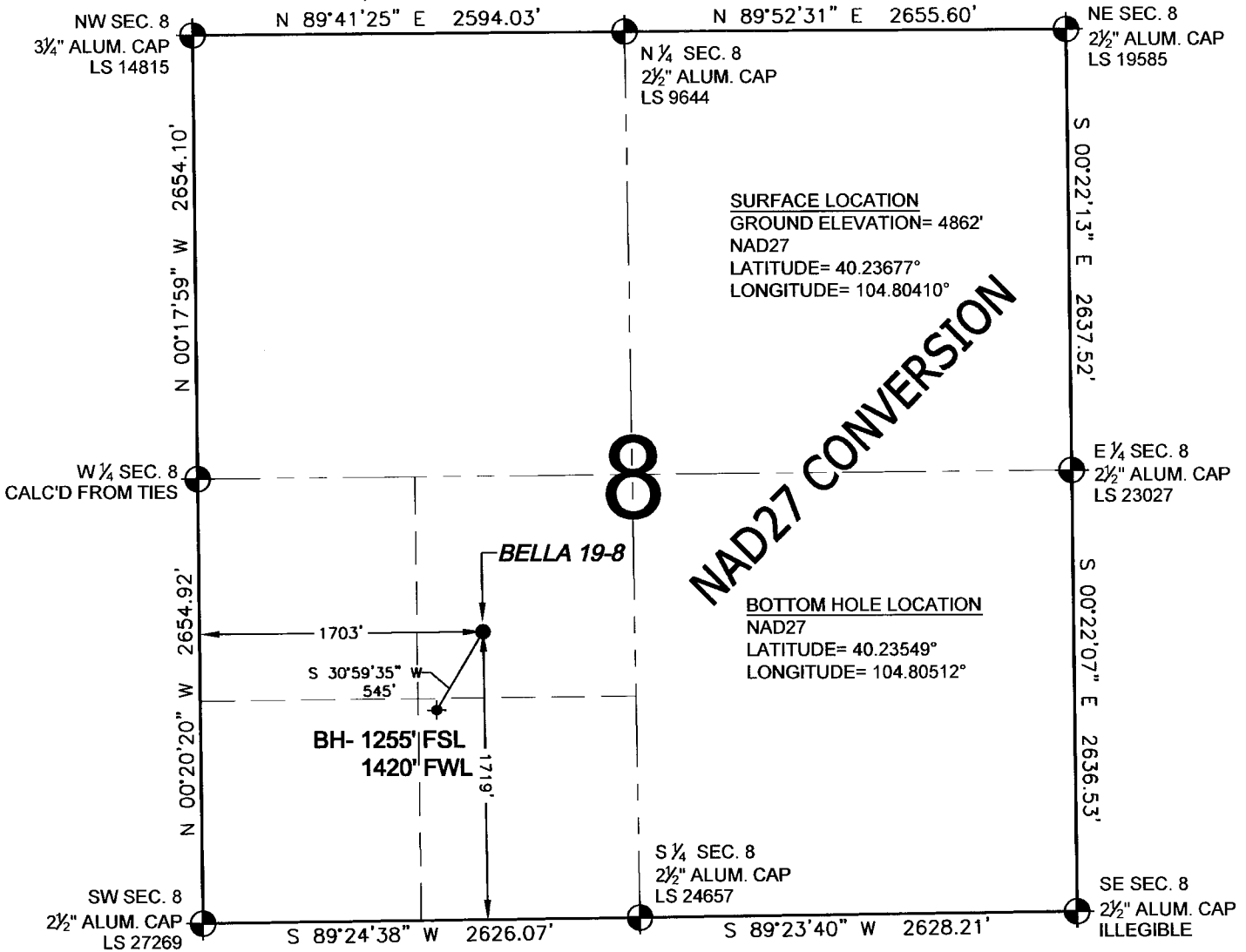


PREPARED BY: PFS Petroleum Field Services, LLC 1801 W. 13th Ave. Denver, CO 80204	FIELD DATE: 06-03-09	WELL NAME: BELLA 19-8
BY: SMF	DRAWING DATE: 06-03-09	SURFACE LOCATION: WELD COUNTY, COLORADO NE 1/4 SW 1/4, SEC. 8, T3N, R66W

NOTICE: ACCORDING TO COLORADO LAW YOU MUST COMMENCE ANY LEGAL ACTION BASED UPON ANY DEFECT IN THIS SURVEY WITHIN THREE YEARS AFTER YOU FIRST DISCOVER SUCH DEFECT. IN NO EVENT MAY ANY ACTION BASED UPON ANY DEFECT IN THIS SURVEY BE COMMENCED MORE THAN TEN YEARS FROM THIS SAID DATE OF THIS CERTIFICATION SHOWN HEREON.

EXHIBIT: NAD27 CONVERSION

SECTION 8, TOWNSHIP 3 NORTH, RANGE 66 WEST, 6TH P.M.



WELL **BELLA 19-8** TO BE LOCATED 1719' FSL AND 1703' FWL, SECTION 8, T3N, R66W OF THE 6th P.M.

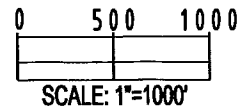
NOTES:

- THIS SURVEY WAS DONE BY GPS METHODS AND CONFORMS TO THE MINIMUM STANDARDS SET BY THE C.O.G.C.C., RULE NO. 215 (PDOP VALUE IS LESS THAN 6.0, LATITUDE AND LONGITUDE ARE ACCURATE TO 5 DECIMAL PLACES, AND GPS OBSERVATIONS ARE DIFFERENTIAL AND DONE BY QUALIFIED PERSONNEL.)
- ELEVATIONS SHOWN AT THE WELL HEAD, AS WELL AS HORIZONTAL CONTROL, ARE BASED ON GPS-RTK VALUES DERIVED FROM DOING 2-HOUR STATIC GPS SESSIONS AND REDUCTIONS USING O.P.U.S. SOLUTIONS.
VERTICAL = NAVD88; HORIZONTAL = NAD83/92
- THE BEARINGS SHOWN HEREON ARE BASED ON GPS OBSERVATIONS BETWEEN THE MONUMENTS SHOWN HEREON AS FOUND ON THE FIELD DATE BELOW.
- DISTANCES SHOWN ARE AT GROUND LEVEL, AS MEASURED IN THE FIELD, WITH TIES TO WELLS MEASURED AT A PERPENDICULAR TO SECTION LINES.

LEGEND

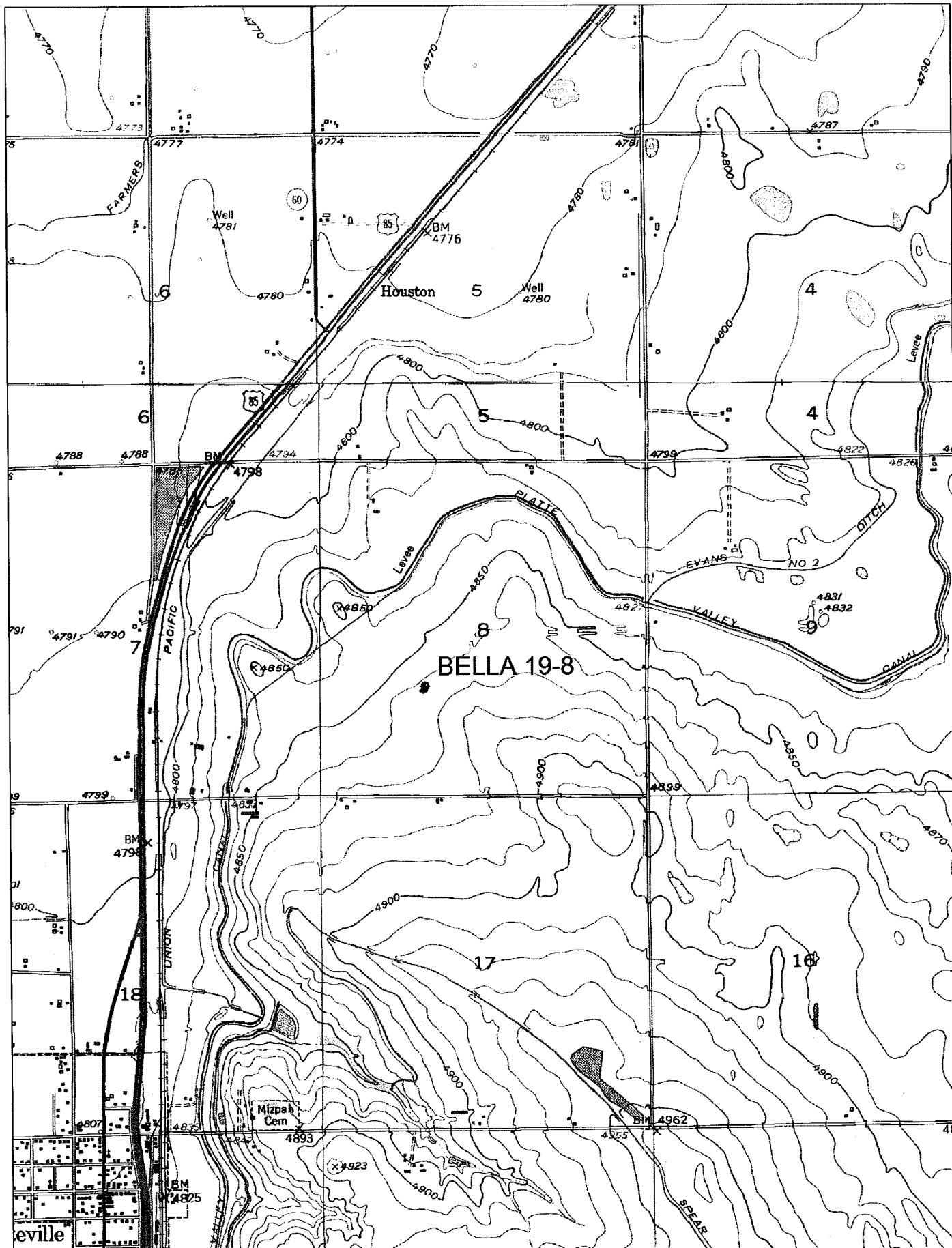
- ⊕ = EXISTING MONUMENT ⊕ = BOTTOM HOLE BH = BOTTOM HOLE
- = PROPOSED WELL ◆ = EXISTING WELL

NOTE: LATITUDE AND LONGITUDE SHOWN WERE CONVERTED FROM NAD83 USING CORPSCON 6.0 (PROGRAM). PFS DOES NOT WARRANT OR GUARANTEE THEIR ACCURACY.



PREPARED BY: PFS Petroleum Field Services, LLC 1801 W. 13th Ave. Denver, CO 80204	FIELD DATE: 06-03-09	WELL NAME: BELLA 19-8
	DRAWING DATE: 06-03-09	SURFACE LOCATION: WELD COUNTY, COLORADO
	BY: SMF	NE 1/4 SW 1/4, SEC. 8, T3N, R66W

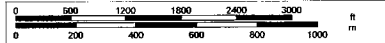
NOTICE: ACCORDING TO COLORADO LAW YOU MUST COMMENCE ANY LEGAL ACTION BASED UPON ANY DEFECT IN THIS SURVEY WITHIN THREE YEARS AFTER YOU FIRST DISCOVER SUCH DEFECT. IN NO EVENT MAY ANY ACTION BASED UPON ANY DEFECT IN THIS SURVEY BE COMMENCED MORE THAN TEN YEARS FROM THIS SAID DATE OF THIS CERTIFICATION SHOWN HEREON.

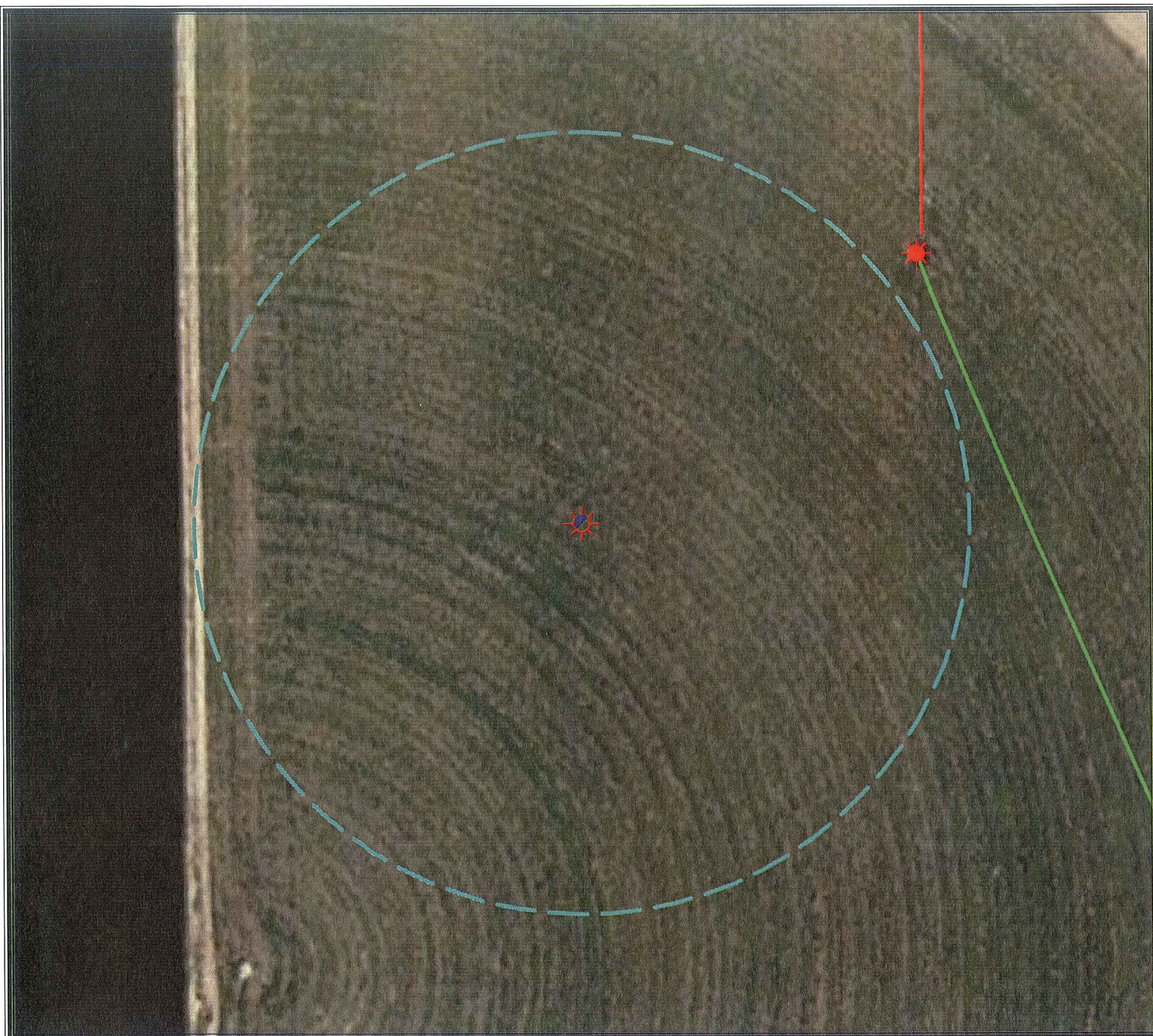


DE LORME

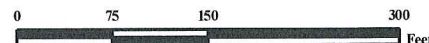
© 2002 DeLorme, 3-D TopoQuads®. Data copyright of content owner.
www.delorme.com

Scale 1 : 25,000
1" = 2080 ft





No Visible Improvements Within 400' Radius



Legend

- | | | | |
|--|----------------------|--|---------------------|
| | Proposed Well | | Building/Residence |
| | Existing Well | | Oil & Gas Equipment |
| | Plugged Well | | Water Body |
| | Manhole | | Utility Box |
| | CattleGuard/Gate | | Railroad |
| | Bridge | | Sewer |
| | ECD | | Fence |
| | 400' Radius | | Overhead Power Line |
| | Facilities Enclosure | | Pipeline |
| | | | Access Road |
| | | | Ditch/Canal |

400ft Radius Map BELLA 19-8

Surface Location: T3N R66W S8
Description of surface uses : Open Field

Field Date: 06/03/2009
Drawing Date: 06/03/2009
Drafter: BHF
Checked By: MPS

Aerial Photo supplied by NAIP - 2005

Prepared for:
**KERR-MCGEE OIL &
GAS ONSHORE LP**



Use our resources to find yours!
www.petro-fs.com

1801 W. 13th Ave Denver, CO 80204 (303) 928-7128
111 E. Third Street Suite 207 Rifle, CO 81650 (970) 625-4740