



April 7, 2009

Mr. Murray Herring  
Top Operation Company  
10881 W. Asbury Avenue, Suite 230  
Lakewood, Colorado 80227

**RE: Rider Family Trust #1 (Rider 1-36) gas well (API 05-013-06096),  
NE ¼, SE ¼, Section 36 Township 3 N, Range 69 W, Boulder County, Colorado  
Cordilleran/Olsson Associates Project #008-2140**

Dear Mr. Herring:

Top Operating Company retained Cordilleran Compliance Services (Cordilleran), a division of Olsson Associates, to conduct quarterly groundwater monitoring activities on previously installed groundwater monitoring wells at the Rider Family Trust #1 (Rider #1) well site. Static water levels were measured at MW-1, MW-2, MW-3R, MW-4, MW-5, and MW-6. Groundwater samples were collected at MW-2, MW-3R, MW-4, MW-5, and MW-6. All samples were analyzed for benzene, toluene, ethylbenzene, and total xylenes (BTEX) by EPA method 8260 at Summit Laboratories in Golden, Colorado. Concentrations of benzene exceeding the maximum allowable concentration were identified in a groundwater sample from two of the groundwater monitoring wells (MW-2 and MW-4), one of which also contained concentrations of toluene exceeding the maximum allowable concentration (MW-4). Maps showing the location and layout of the site are attached as Figure 1 and Figure 2.

### **Groundwater Sampling Protocols**

On March 30, 2009, Cordilleran sampled five monitoring wells and recorded static water levels in all six wells. MW-1 was not sampled since it is upgradient. All water levels were measured using a Wattera™ oil/water interface probe. Fluid level measurements are shown in Table 1, and a groundwater elevation contour map showing the groundwater gradient across the site is presented as Figure 3.

Groundwater samples were collected from monitoring wells after purging three casing volumes from each well or until it bailed dry and after allowing each well to recharge. The samples were preserved with hydrochloric acid, stored on ice, and submitted to Summit Laboratories in Golden, Colorado under proper chain of custody protocol.

### **Groundwater Results**

Groundwater levels have decreased across the site relative to the previous sampling event by 0.63 to 0.88 feet (Table 1). Light non-aqueous phase liquids (LNAPL) or free-phase petroleum hydrocarbons were not detected in any of the six monitoring wells. The calculated gradient across the site is 0.003 feet per foot.

Mr. Murray Herring  
April 7, 2009

None of the BTEX constituents were detected above the Colorado Oil and Gas Conservation Commission (COGCC) maximum allowable concentrations (MACs) in groundwater samples from MW-3R, MW-5, or MW-6 (Table 2, Figure 4). Benzene was detected above the COGCC MAC of 5 micrograms per liter ( $\mu\text{g/L}$ ) in MW-2 (Table 2, Figure 4), though the concentration of benzene, as well as other BTEX constituents, has steadily decreased over time from an initial concentration of 491  $\mu\text{g/L}$  on April 20, 2006 to a concentration of 27  $\mu\text{g/L}$  this quarter. Attachment A is a graph that shows a general trend of declining benzene concentrations, most likely through natural attenuation. Benzene and toluene were both detected above the COGCC MACs of 5  $\mu\text{g/L}$  and 1,000  $\mu\text{g/L}$ , respectively, in MW-4 (Table 2, Figure 4). Benzene in MW-4 has declined from an initial concentration of 620  $\mu\text{g/L}$  on October 10, 2008 to 150  $\mu\text{g/L}$  this quarter. The laboratory report is included with this report as Attachment B.

A digital copy of this report and the associated attachments are included for your convenience. Please call me if you have any questions or comments.

Sincerely,



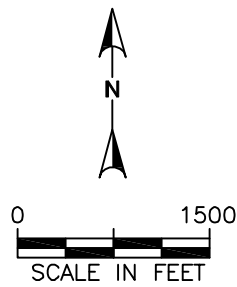
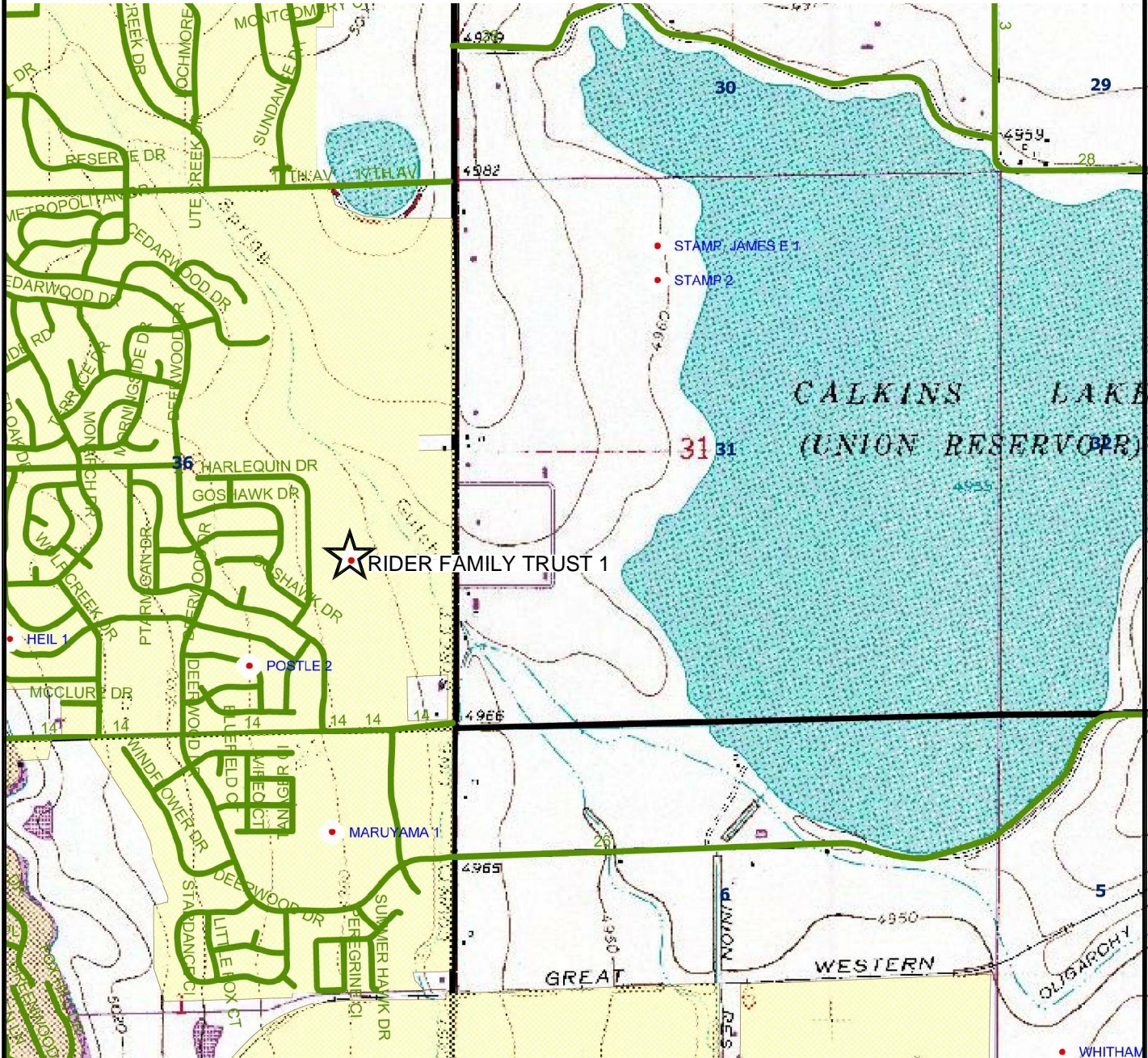
Jason Martin  
Associate Scientist




James Hix  
Senior Project Geologist

## Figures

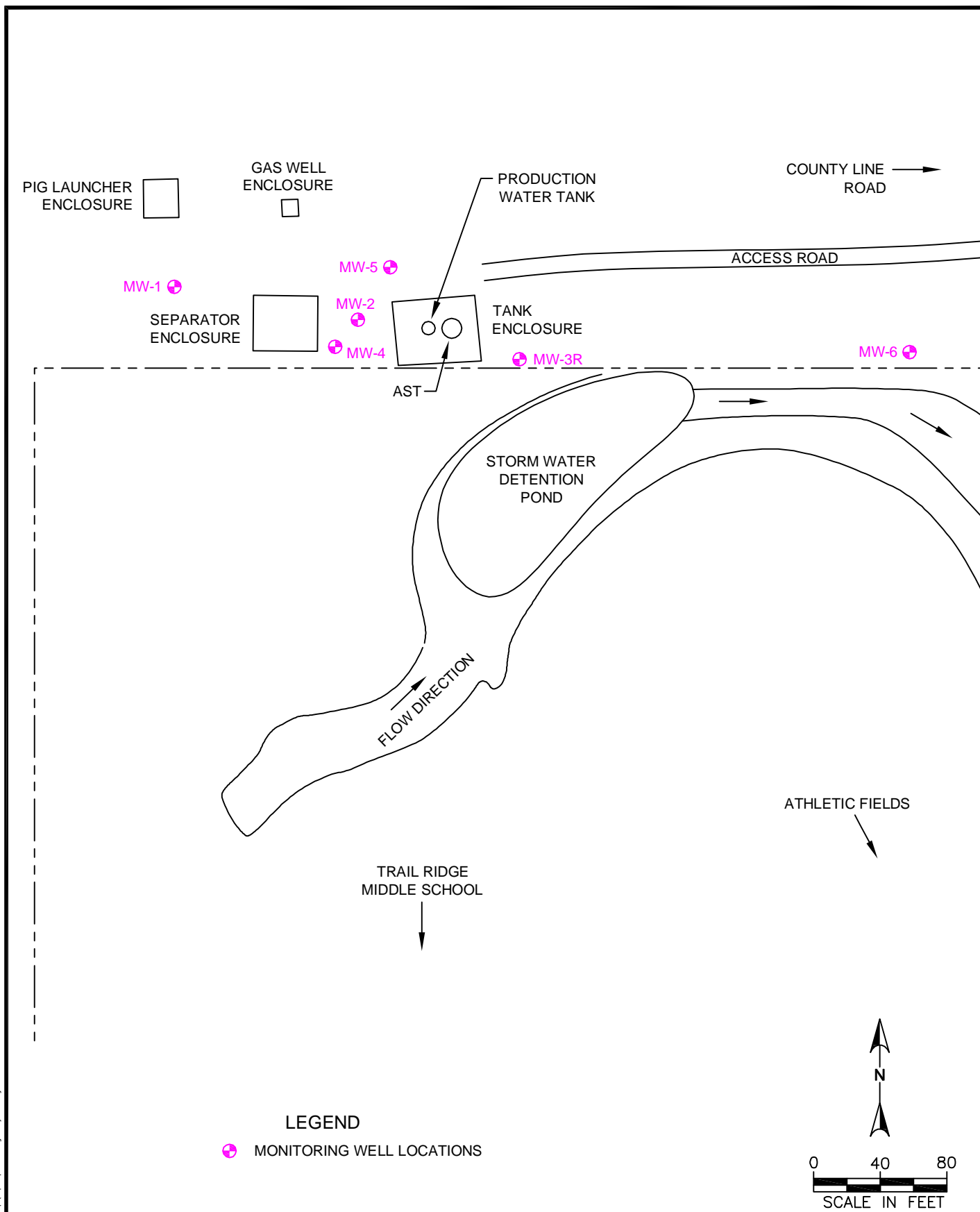




M:\clients\COROLLERAN\Top-Op\Top-Op-Topo.dwg Layout: Layout1

PROJECT NO: 008-2140	RIDER FAMILY TRUST #1 GAS WELL TOPOGRAPHIC MAP SE 1/4 SECTION 36, T3N,R69W BOULDER COUNTY, CO.		4690 Table Mountain Drive Suite 200 Golden, CO 80403 TEL 303.237.2072 FAX 303.237.2659	FIGURE
DRAWN BY: RJV				1
DATE: 4/6/09				

M:\clients\COROLLERAN\Top-Op\Top-Op-Site.dwg Layout: Layout1



PROJECT NO: 008-2140

DRAWN BY: RJV

DATE: 4/6/09

RIDER FAMILY TRUST #1 GAS WELL  
SITE MAP  
SE1/4 SECTION 36, T3N,R69W  
BOULDER COUNTY, CO.

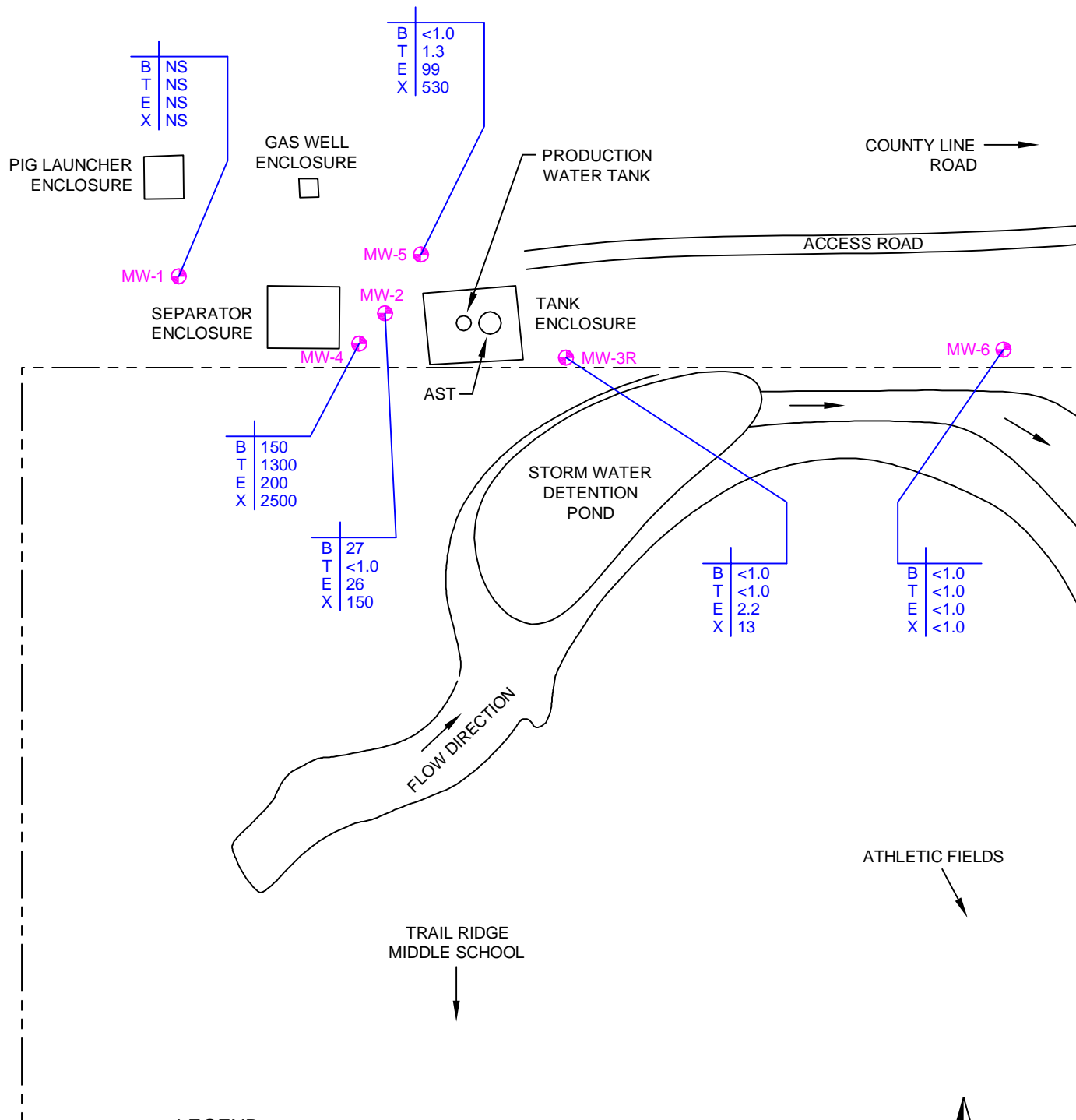
**OLSSON**  
ASSOCIATES

4690 Table Mountain Drive  
Suite 200  
Golden, CO 80403  
TEL 303.237.2072  
FAX 303.237.2659

FIGURE

2

M:\clients\COROLLERMAN\Top-Op-A-309.dwg Layout: Layout1



### LEGEND

● MONITORING WELL LOCATIONS

#### CHEMICAL DATA

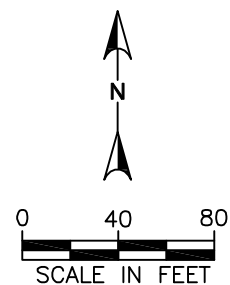
B = BENZENE (µg/l)

T = TOLUENE (µg/l)

E = ETHYLBENZENE (µg/l)

X = XYLENES (µg/l)

NS = NOT SAMPLED



PROJECT NO: 008-2140

DRAWN BY: RJV

DATE: 4/6/09

RIDER FAMILY TRUST #1 GAS WELL  
GROUNDWATER ANALYTICAL RESULTS  
MARCH 30, 2009  
SE1/4 SECTION 36, T3N,R69W  
BOULDER COUNTY, CO.

**OLSSON**  
ASSOCIATES

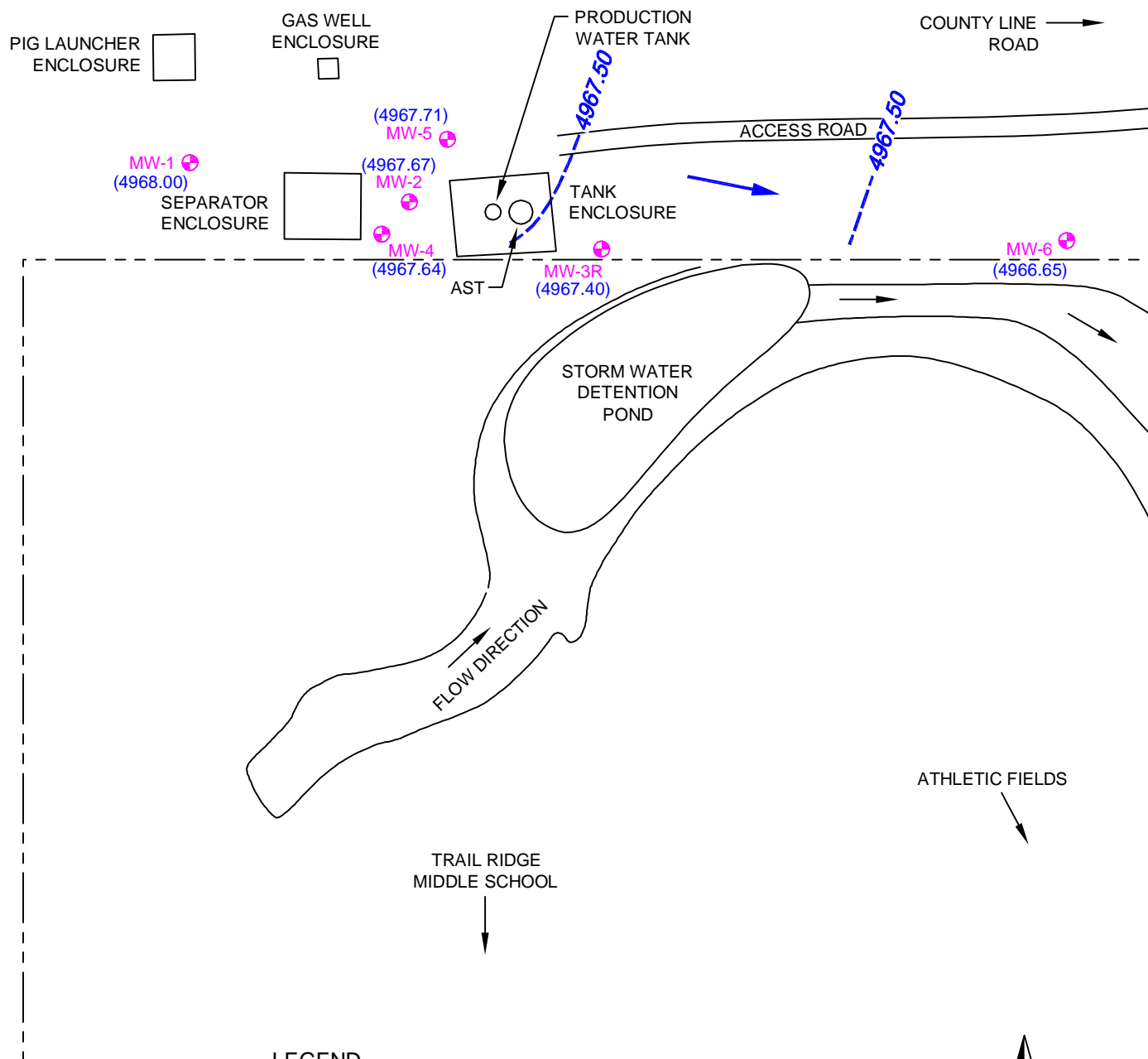
4690 Table Mountain Drive  
Suite 200  
Golden, CO 80403  
TEL 303.237.2072  
FAX 303.237.2659

FIGURE

4

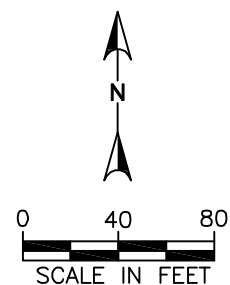


M:\clients\COROLLERAN\Top-Op-G-309.dwg Layout: Layout1



### LEGEND

- MONITORING WELL LOCATIONS
- 4967.50 GROUNDWATER ELEVATION CONTOUR (FEET)
- (4967.40) GROUNDWATER ELEVATION (FEET)
- GROUNDWATER FLOW DIRECTION



PROJECT NO: 08-2140  
DRAWN BY: RJV  
DATE: 4/6/09

RIDER FAMILY TRUST #1 GAS WELL  
GROUNDWATER ELEVATION MAP  
MARCH 30, 2009  
SE1/4 SECTION 36, T3N,R69W  
BOULDER COUNTY, CO.

**OLSSON**  
ASSOCIATES

4690 Table Mountain Drive  
Suite 200  
Golden, CO 80403  
TEL 303.237.2072  
FAX 303.237.2659

FIGURE

3

## Tables



**Table 1**  
**Fluid Level Measurements**

**Top Operating Co. - Rider Family Trust #1 Well**  
**Longmont, Boulder County, Colorado**

Station ID	Date	Depth to LNAPL (feet)	Depth to Water (feet)	Total Depth (feet)	Measuring Point Elevation (feet)	Groundwater Elevation (feet)	Water Column (feet)	LNAPL Thickness (feet)
MW-1	10/10/2008	ND	7.22	12.54	4976.10	4968.88	5.32	0.00
	3/30/2009	ND	8.10			4968.00	4.44	0.00
MW-2	10/10/2008	ND	7.40	12.82	4975.90	4968.50	5.42	0.00
	3/30/2009	ND	8.23			4967.67	4.59	0.00
MW-3R	10/10/2008	ND	7.01	14.91	4975.18	4968.17	7.90	0.00
	3/30/2009	ND	7.78			4967.40	7.13	0.00
MW-4	10/10/2008	ND	7.36	15.00	4975.83	4968.47	7.64	0.00
	3/30/2009	ND	8.19			4967.64	6.81	0.00
MW-5	10/10/2008	ND	7.53	15.00	4976.04	4968.51	7.47	0.00
	3/30/2009	ND	8.33			4967.71	6.67	0.00
MW-6	10/10/2008	ND	4.88	14.50	4972.16	4967.28	9.62	0.00
	3/30/2009	ND	5.51			4966.65	8.99	0.00

Note: See Figure 2 for monitoring well locations.

LNAPL - light non-aqueous phase liquid

ND - Not Detected

Measuring Point - North side top of PVC Casing

**Table 2**  
**Groundwater Analytical Results**

**Top Operating Co. - Rider Family Trust #1 Well**  
**Longmont, Boulder County, Colorado**

Station ID	Date	Benzene (µg/L)	Toluene (µg/L)	Ethylbenzene (µg/L)	Xylenes (µg/L)	Comments
COGCC Standards		5	1,000	680	10,000	Table 910-1 Organics in Groundwater: EPA Method 8020
MW-1	1/31/2008	NS	NS	NS	NS	Cordilleran gauged fluid levels in MW-1 but the well was not sampled
	7/31/2008	< 1	< 2	< 2	< 2	Cordilleran groundwater sample - submitted to Evergreen Analytical Laboratory
	10/10/2008	< 1	< 1	< 1	< 1	Cordilleran groundwater sample - submitted to Summit Scientific
	3/30/2009	NS	NS	NS	NS	Cordilleran/Olsson gauged fluid levels in MW-1 but the well was not sampled
MW-2	4/20/2006	<b>491</b>	559	697	8,927	CTL Thompson groundwater sample - submitted to Technology Laboratory
	1/31/2008	<b>170</b>	< 2	120	1,438	Cordilleran groundwater sample - submitted to Evergreen Analytical Laboratory
	7/31/2008	<b>53</b>	< 2	25	598.1	Cordilleran groundwater sample - submitted to Evergreen Analytical Laboratory
	10/10/2008	<b>47</b>	1.6	51	350	Cordilleran groundwater sample - submitted to Summit Scientific
	3/30/2009	<b>27</b>	< 1	26	150	Cordilleran/Olsson groundwater sample - submitted to Summit Scientific
MW-3	4/20/2006	<b>34.3</b>	23	194	3,009	CTL Thompson groundwater sample - submitted to Technology Laboratory
	1/31/2008	NS	NS	NS	NS	Monitoring well MW-3 was destroyed by mowing operations - Not Sampled.
	7/31/2008	NS	NS	NS	NS	Monitoring well MW-3 was destroyed by mowing operations - Not Sampled.
MW-3R	10/10/2008	< 1	< 1	7	120	Replacement Monitoring Well: Cordilleran sample submitted to Summit Scientific
	3/30/2009	< 1	< 1	2.2	13	Cordilleran/Olsson groundwater sample - submitted to Summit Scientific
MW-4	10/10/2008	<b>620</b>	<b>5,100</b>	<b>740</b>	7,900	New Well: Cordilleran Groundwater sample - submitted to Summit Scientific
	3/30/2009	<b>150</b>	<b>1,300</b>	200	2,500	Cordilleran/Olsson groundwater sample - submitted to Summit Scientific
MW-5	10/10/2008	< 1	1.1	30	1,700	New Well: Cordilleran Groundwater sample - submitted to Summit Scientific
	3/30/2009	< 1	1.3	99	530	Cordilleran/Olsson groundwater sample - submitted to Summit Scientific
MW-6	10/10/2008	< 1	< 1	< 1	< 1	New Well: Cordilleran Groundwater sample - submitted to Summit Scientific
	3/30/2009	< 1	< 1	< 1	< 1	Cordilleran/Olsson groundwater sample - submitted to Summit Scientific

See Figure 2, Site Map for monitoring well locations

DTP - Depth to Product (feet) below top of PVC casing stickup

DTW - Depth to Water (feet) below top of PVC casing stickup

ND - Not Detected

NS - Not Sampled

NA - Not Applicable, Well Destroyed

< - Not Detected above the laboratory lower quantitation limit (LQL)

µg/L - micrograms per liter

COGCC - Colorado Oil and Gas Conservation Commission, Table 910-1 Maximum Allowable Concentrations or Levels

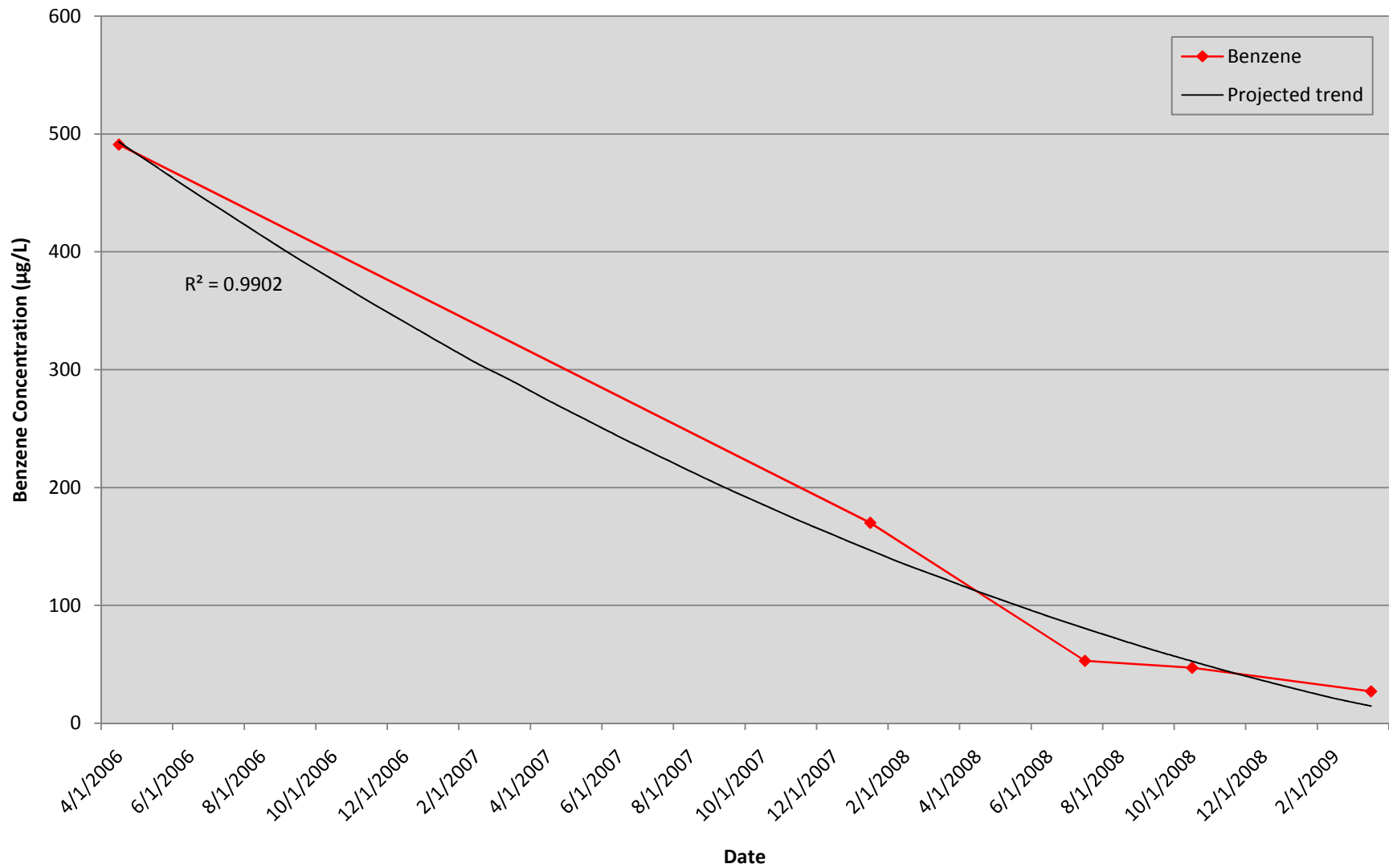
Values in bold font exceed the COGCC Table 910-1 Maximum Allowable Concentrations

## **Attachment A**

# Attachment A

## Benzene Concentrations

### MW-2



**Attachment B**  
**Laboratory Report**



# Summit Scientific

---

741 Corporate Circle – Suite I ♦ Golden, Colorado 80401

303.277.9310 - laboratory ♦ 303.277.9531 - fax

April 01, 2009

James Hix  
Cordilleran Compliance Services, Inc.  
5550 Marshall St.  
Arvada, CO 80002  
RE: Top Operating Rider Family Trust #1

Enclosed are the results of analyses for samples received by Summit Scientific on 03/30/09 15:30. If you have any questions concerning this report, please feel free to contact me.

Sincerely,

A handwritten signature in blue ink, appearing to be 'LS' followed by a long horizontal flourish.

Logan Shrewsbury For Ben Shrewsbury  
Vice President / Laboratory Director



Cordilleran Compliance Services, Inc.  
5550 Marshall St.  
Arvada CO, 80002

Project: Top Operating Rider Family Trust #1  
Project Number: 008-2140  
Project Manager: James Hix

**Reported:**  
04/01/09 17:01

### ANALYTICAL REPORT FOR SAMPLES

Sample ID	Laboratory ID	Matrix	Date Sampled	Date Received
MW-2	R903123-01	Water	03/30/09 13:20	03/30/09 15:30
MW-3R	R903123-02	Water	03/30/09 12:40	03/30/09 15:30
MW-4	R903123-03	Water	03/30/09 13:40	03/30/09 15:30
MW-5	R903123-04	Water	03/30/09 13:00	03/30/09 15:30
MW-6	R903123-05	Water	03/30/09 12:20	03/30/09 15:30

Summit Scientific

*The results in this report apply to the samples analyzed in accordance with the chain of custody document. This analytical report must be reproduced in its entirety.*





Cordilleran Compliance Services, Inc.  
5550 Marshall St.  
Arvada CO, 80002

Project: Top Operating Rider Family Trust #1  
Project Number: 008-2140  
Project Manager: James Hix

**Reported:**  
04/01/09 17:01

**MW-2**  
**R903123-01 (Water)**

**Summit Scientific**

**Volatile Organic Compounds by EPA Method 8260B**

Date Sampled: **03/30/09 13:20**

Analyte	Result	Reporting Limit	Units	Dilution	Batch	Prepared	Analyzed	Method	Notes
<b>Benzene</b>	<b>27</b>	1.0	ug/l	1	9033001	03/30/09	04/01/09	EPA 8260B	
Toluene	ND	1.0	"	"	"	"	"	"	
<b>Ethylbenzene</b>	<b>26</b>	1.0	"	"	"	"	"	"	
<b>Xylenes (total)</b>	<b>150</b>	1.0	"	"	"	"	"	"	

Date Sampled: **03/30/09 13:20**

Analyte	Result	Reporting Limit	Units	Dilution	Batch	Prepared	Analyzed	Method	Notes
<i>Surrogate: 1,2-Dichloroethane-d4</i>		91.7 %	77.3-121		"	"	"	"	
<i>Surrogate: Toluene-d8</i>		107 %	91.4-107		"	"	"	"	
<i>Surrogate: 4-Bromofluorobenzene</i>		97.7 %	85.3-109		"	"	"	"	

Summit Scientific

*The results in this report apply to the samples analyzed in accordance with the chain of custody document. This analytical report must be reproduced in its entirety.*



Cordilleran Compliance Services, Inc.  
5550 Marshall St.  
Arvada CO, 80002

Project: Top Operating Rider Family Trust #1  
Project Number: 008-2140  
Project Manager: James Hix

**Reported:**  
04/01/09 17:01

**MW-3R**  
**R903123-02 (Water)**

**Summit Scientific**

**Volatile Organic Compounds by EPA Method 8260B**

Date Sampled: **03/30/09 12:40**

Analyte	Result	Reporting Limit	Units	Dilution	Batch	Prepared	Analyzed	Method	Notes
Benzene	ND	1.0	ug/l	1	9033001	03/30/09	04/01/09	EPA 8260B	
Toluene	ND	1.0	"	"	"	"	"	"	
<b>Ethylbenzene</b>	<b>2.2</b>	1.0	"	"	"	"	"	"	
<b>Xylenes (total)</b>	<b>13</b>	1.0	"	"	"	"	"	"	

Date Sampled: **03/30/09 12:40**

Analyte	Result	Reporting Limit	Units	Dilution	Batch	Prepared	Analyzed	Method	Notes
<i>Surrogate: 1,2-Dichloroethane-d4</i>		90.2 %	77.3-121		"	"	"	"	
<i>Surrogate: Toluene-d8</i>		97.7 %	91.4-107		"	"	"	"	
<i>Surrogate: 4-Bromofluorobenzene</i>		102 %	85.3-109		"	"	"	"	

Summit Scientific

*The results in this report apply to the samples analyzed in accordance with the chain of custody document. This analytical report must be reproduced in its entirety.*





Cordilleran Compliance Services, Inc.  
5550 Marshall St.  
Arvada CO, 80002

Project: Top Operating Rider Family Trust #1  
Project Number: 008-2140  
Project Manager: James Hix

**Reported:**  
04/01/09 17:01

**MW-4**  
**R903123-03 (Water)**

**Summit Scientific**

**Volatile Organic Compounds by EPA Method 8260B**

Date Sampled: **03/30/09 13:40**

Analyte	Result	Reporting Limit	Units	Dilution	Batch	Prepared	Analyzed	Method	Notes
<b>Benzene</b>	<b>150</b>	1.0	ug/l	1	9033001	03/30/09	04/01/09	EPA 8260B	
<b>Toluene</b>	<b>1300</b>	10	"	10	"	"	"	"	
<b>Ethylbenzene</b>	<b>200</b>	1.0	"	1	"	"	"	"	
<b>Xylenes (total)</b>	<b>2500</b>	10	"	10	"	"	"	"	

Date Sampled: **03/30/09 13:40**

Analyte	Result	Reporting Limit	Units	Dilution	Batch	Prepared	Analyzed	Method	Notes
<i>Surrogate: 1,2-Dichloroethane-d4</i>		94.7 %	77.3-121		"	"	"	"	
<i>Surrogate: Toluene-d8</i>		99.2 %	91.4-107		"	"	"	"	
<i>Surrogate: 4-Bromofluorobenzene</i>		98.5 %	85.3-109		"	"	"	"	

Summit Scientific

*The results in this report apply to the samples analyzed in accordance with the chain of custody document. This analytical report must be reproduced in its entirety.*



Cordilleran Compliance Services, Inc.  
5550 Marshall St.  
Arvada CO, 80002

Project: Top Operating Rider Family Trust #1  
Project Number: 008-2140  
Project Manager: James Hix

**Reported:**  
04/01/09 17:01

**MW-5**  
**R903123-04 (Water)**

**Summit Scientific**

**Volatile Organic Compounds by EPA Method 8260B**

Date Sampled: **03/30/09 13:00**

Analyte	Result	Reporting Limit	Units	Dilution	Batch	Prepared	Analyzed	Method	Notes
Benzene	ND	1.0	ug/l	1	9033001	03/30/09	04/01/09	EPA 8260B	
<b>Toluene</b>	<b>1.3</b>	1.0	"	"	"	"	"	"	
<b>Ethylbenzene</b>	<b>99</b>	1.0	"	"	"	"	"	"	
<b>Xylenes (total)</b>	<b>530</b>	1.0	"	"	"	"	"	"	

Date Sampled: **03/30/09 13:00**

Analyte	Result	Reporting Limit	Units	Dilution	Batch	Prepared	Analyzed	Method	Notes
Surrogate: 1,2-Dichloroethane-d4		89.5 %	77.3-121		"	"	"	"	
Surrogate: Toluene-d8		101 %	91.4-107		"	"	"	"	
Surrogate: 4-Bromofluorobenzene		101 %	85.3-109		"	"	"	"	

Summit Scientific

The results in this report apply to the samples analyzed in accordance with the chain of custody document. This analytical report must be reproduced in its entirety.



Cordilleran Compliance Services, Inc.  
5550 Marshall St.  
Arvada CO, 80002

Project: Top Operating Rider Family Trust #1  
Project Number: 008-2140  
Project Manager: James Hix

**Reported:**  
04/01/09 17:01

**MW-6**  
**R903123-05 (Water)**

**Summit Scientific**

**Volatile Organic Compounds by EPA Method 8260B**

Date Sampled: **03/30/09 12:20**

Analyte	Result	Reporting		Units	Dilution	Batch	Prepared	Analyzed	Method	Notes
		Limit								
Benzene	ND	1.0		ug/l	1	9033001	03/30/09	04/01/09	EPA 8260B	
Toluene	ND	1.0		"	"	"	"	"	"	
Ethylbenzene	ND	1.0		"	"	"	"	"	"	
Xylenes (total)	ND	1.0		"	"	"	"	"	"	

Date Sampled: **03/30/09 12:20**

Analyte	Result	Reporting		Units	Dilution	Batch	Prepared	Analyzed	Method	Notes
		Limit								
Surrogate: 1,2-Dichloroethane-d4		88.7 %		77.3-121		"	"	"	"	
Surrogate: Toluene-d8		98.5 %		91.4-107		"	"	"	"	
Surrogate: 4-Bromofluorobenzene		102 %		85.3-109		"	"	"	"	

Summit Scientific

The results in this report apply to the samples analyzed in accordance with the chain of custody document. This analytical report must be reproduced in its entirety.



Cordilleran Compliance Services, Inc.  
5550 Marshall St.  
Arvada CO, 80002

Project: Top Operating Rider Family Trust #1  
Project Number: 008-2140  
Project Manager: James Hix

Reported:  
04/01/09 17:01

**Volatile Organic Compounds by EPA Method 8260B - Quality Control**  
**Summit Scientific**

Analyte	Reporting			Spike	Source		%REC		RPD	
	Result	Limit	Units	Level	Result	%REC	Limits	RPD	Limit	Notes

**Batch 9033001 - EPA 5030 Water MS**

**Blank (9033001-BLK1)**

Prepared & Analyzed: 03/30/09

Benzene	ND	1.0	ug/l							
Toluene	ND	1.0	"							
Ethylbenzene	ND	1.0	"							
Xylenes (total)	ND	1.0	"							
Surrogate: 1,2-Dichloroethane-d4	11.5		"	13.3		86.5	77.3-121			
Surrogate: Toluene-d8	13.7		"	13.3		103	91.4-107			
Surrogate: 4-Bromofluorobenzene	13.3		"	13.3		100	85.3-109			

**Blank (9033001-BLK2)**

Prepared & Analyzed: 03/30/09

Benzene	ND	1.0	ug/l							
Toluene	ND	1.0	"							
Ethylbenzene	ND	1.0	"							
Xylenes (total)	ND	1.0	"							
Surrogate: 1,2-Dichloroethane-d4	11.6		"	13.3		87.2	77.3-121			
Surrogate: Toluene-d8	13.4		"	13.3		101	91.4-107			
Surrogate: 4-Bromofluorobenzene	12.8		"	13.3		96.2	85.3-109			

**LCS (9033001-BS1)**

Prepared & Analyzed: 03/30/09

Benzene	27.1	1.0	ug/l	33.3		81.4	70-114			
Toluene	31.3	1.0	"	33.3		94.0	72.7-116			
Surrogate: 1,2-Dichloroethane-d4	11.9		"	13.3		89.5	77.3-121			
Surrogate: Toluene-d8	13.5		"	13.3		102	91.4-107			
Surrogate: 4-Bromofluorobenzene	13.4		"	13.3		101	85.3-109			

**LCS (9033001-BS2)**

Prepared & Analyzed: 03/30/09

Benzene	27.9	1.0	ug/l	33.3		83.8	70-114			
Toluene	32.1	1.0	"	33.3		96.4	72.7-116			
Surrogate: 1,2-Dichloroethane-d4	12.3		"	13.3		92.5	77.3-121			
Surrogate: Toluene-d8	13.5		"	13.3		102	91.4-107			
Surrogate: 4-Bromofluorobenzene	13.4		"	13.3		101	85.3-109			

Summit Scientific

The results in this report apply to the samples analyzed in accordance with the chain of custody document. This analytical report must be reproduced in its entirety.



Cordilleran Compliance Services, Inc.  
5550 Marshall St.  
Arvada CO, 80002

Project: Top Operating Rider Family Trust #1  
Project Number: 008-2140  
Project Manager: James Hix

Reported:  
04/01/09 17:01

**Volatile Organic Compounds by EPA Method 8260B - Quality Control**  
**Summit Scientific**

Analyte	Reporting			Spike	Source		%REC		RPD	
	Result	Limit	Units	Level	Result	%REC	Limits	RPD	Limit	Notes

**Batch 9033001 - EPA 5030 Water MS**

**LCS Dup (9033001-BSD1)**

Prepared & Analyzed: 03/30/09

Benzene	26.7	1.0	ug/l	33.3		80.2	70-114	1.49	8.14	
Toluene	31.1	1.0	"	33.3		93.4	72.7-116	0.641	7.88	
Surrogate: 1,2-Dichloroethane-d4	12.0		"	13.3		90.2	77.3-121			
Surrogate: Toluene-d8	13.4		"	13.3		101	91.4-107			
Surrogate: 4-Bromofluorobenzene	13.2		"	13.3		99.2	85.3-109			

**LCS Dup (9033001-BSD2)**

Prepared & Analyzed: 03/30/09

Benzene	26.6	1.0	ug/l	33.3		79.9	70-114	4.77	8.14	
Toluene	30.6	1.0	"	33.3		91.9	72.7-116	4.78	7.88	
Surrogate: 1,2-Dichloroethane-d4	11.8		"	13.3		88.7	77.3-121			
Surrogate: Toluene-d8	13.7		"	13.3		103	91.4-107			
Surrogate: 4-Bromofluorobenzene	13.2		"	13.3		99.2	85.3-109			

**Matrix Spike (9033001-MS1)**

Source: R903120-13

Prepared: 03/30/09 Analyzed: 04/01/09

Benzene	25.7	1.0	ug/l	33.3	ND	77.2	66.8-117			
Toluene	30.4	1.0	"	33.3	ND	91.3	71.5-117			
Surrogate: 1,2-Dichloroethane-d4	12.2		"	13.3		91.7	77.3-121			
Surrogate: Toluene-d8	13.0		"	13.3		97.7	91.4-107			
Surrogate: 4-Bromofluorobenzene	13.3		"	13.3		100	85.3-109			

**Matrix Spike (9033001-MS2)**

Source: R903120-14

Prepared: 03/30/09 Analyzed: 04/01/09

Benzene	24.6	1.0	ug/l	33.3	ND	73.9	66.8-117			
Toluene	29.1	1.0	"	33.3	ND	87.4	71.5-117			
Surrogate: 1,2-Dichloroethane-d4	12.4		"	13.3		93.2	77.3-121			
Surrogate: Toluene-d8	13.2		"	13.3		99.2	91.4-107			
Surrogate: 4-Bromofluorobenzene	13.4		"	13.3		101	85.3-109			

**Matrix Spike Dup (9033001-MSD1)**

Source: R903120-13

Prepared: 03/30/09 Analyzed: 04/01/09

Benzene	23.0	1.0	ug/l	33.3	ND	69.1	66.8-117	11.1	17.8	
Toluene	26.9	1.0	"	33.3	ND	80.8	71.5-117	12.2	14.4	
Surrogate: 1,2-Dichloroethane-d4	14.0		"	13.3		105	77.3-121			
Surrogate: Toluene-d8	13.2		"	13.3		99.2	91.4-107			
Surrogate: 4-Bromofluorobenzene	13.4		"	13.3		101	85.3-109			

Summit Scientific

The results in this report apply to the samples analyzed in accordance with the chain of custody document. This analytical report must be reproduced in its entirety.





Cordilleran Compliance Services, Inc.  
5550 Marshall St.  
Arvada CO, 80002

Project: Top Operating Rider Family Trust #1  
Project Number: 008-2140  
Project Manager: James Hix

**Reported:**  
04/01/09 17:01

**Volatile Organic Compounds by EPA Method 8260B - Quality Control**  
**Summit Scientific**

Analyte	Reporting			Spike	Source		%REC		RPD	
	Result	Limit	Units	Level	Result	%REC	Limits	RPD	Limit	Notes

**Batch 9033001 - EPA 5030 Water MS**

Matrix Spike Dup (9033001-MSD2)		Source: R903120-14			Prepared: 03/30/09		Analyzed: 04/01/09			
Benzene	24.0	1.0	ug/l	33.3	ND	72.1	66.8-117	2.47	17.8	
Toluene	28.2	1.0	"	33.3	ND	84.7	71.5-117	3.14	14.4	
Surrogate: 1,2-Dichloroethane-d4	14.1		"	13.3		106	77.3-121			
Surrogate: Toluene-d8	13.3		"	13.3		100	91.4-107			
Surrogate: 4-Bromofluorobenzene	14.0		"	13.3		105	85.3-109			

Summit Scientific

*The results in this report apply to the samples analyzed in accordance with the chain of custody document. This analytical report must be reproduced in its entirety.*



Cordilleran Compliance Services, Inc.  
5550 Marshall St.  
Arvada CO, 80002

Project: Top Operating Rider Family Trust #1  
Project Number: 008-2140  
Project Manager: James Hix

**Reported:**  
04/01/09 17:01

### Notes and Definitions

DET Analyte DETECTED  
ND Analyte NOT DETECTED at or above the reporting limit  
NR Not Reported  
dry Sample results reported on a dry weight basis  
RPD Relative Percent Difference

---

Summit Scientific

A handwritten signature in black ink, appearing to be 'JM' followed by a long horizontal stroke.

*The results in this report apply to the samples analyzed in accordance with the chain of custody document. This analytical report must be reproduced in its entirety.*