

**Well ID: GR 12-29**

Monitor Date: 7/26/2008

Observers: N. Weisenbacher

**Reclamation Status as of July 2008:** Not reclaimed

Major subsidence problems.

**Approximate Seed Date:**

**Vegetation Community:** Oak Brush Mountain Shrubland

## VEGETATION

**Reference Area % Cover:** 31.2

### Desirable Vegetation

**Appears vigorous and self sustaining?**

☐ New Shoots

☐ Litter

**Size:**

☐ Flowers / Seeds

☐ Seedlings

**Color / Vigor:**

**Comments**

### Undesirable Vegetation

**Noxious Weeds Present?** Tamarisk near compressors. Kochia,present.

**Undesirable Species <5% of Total Cover:**

## EROSION

**Erosion Issues:** None

### BLM RECLAMATION TIMETABLE:

**Additional work needed to obtain 90% cover:**

% Area in Use: 100

% Monitor: 0

% Acceptable: 0

% Reclamation Complete: 0

% Restored: 0

**Major Facilities Issues:**

**Additional Comments:**

GR 12-29

**VEGETATION DATA**

**Vegetation Cover**

**First Hit % Cover**

**Ground Hit % Cover**

**Species**

**T1**

**T2**

**T3**

**Mean**

**T1**

**T2**

**T3**

**Mean**

---

No Data

**Species List**

## GR 12-29



GR 12-29 North

Photo Date: 7/26/2008

X: 2255437.92177 Y: 1617054.99689



GR 12-29 East

Photo Date: 7/26/2008

X: 2255311.50085 Y: 1617121.47713



GR 12-29 South

Photo Date: 7/26/2008

X: 2255344.59406 Y: 1617151.48362



GR 12-29 West

Photo Date: 7/26/2008

X: 2255479.41883 Y: 1617103.89716

**Well ID: GR 32-34**

BLM Land

Monitor Date: 7/24/2008

Observers: N. Weisenbacher

**Reclamation Status as of July 2008:** Reclaimed

**Approximate Seed Date:**

**Vegetation Community:** Salt Desert Scrubland Low Elevation

## VEGETATION

**Total Acceptable Vegetation % Cover:** 2.67

**Reference Area % Cover:** 25.8

**90% of Reference Area?** No

**Relative % Cover of:** Grasses 44.44 Forbs 55.56 Shrubs 0

### Desirable Vegetation

**Appears vigorous and self sustaining?** No

☐ New Shoots

☐ Litter

**Size:**

☐ Flowers / Seeds

☐ Seedlings

**Color / Vigor:**

**Comments**

### Undesirable Vegetation

**Noxious Weeds Present?** Yes Cheatgrass interspersed and kochia.

**Undesirable Species <5% of Total Cover:** < 5%

## EROSION

**Erosion Issues:** None

### BLM RECLAMATION TIMETABLE:

% Area in Use: 30

% Monitor: 70

% Acceptable: 0

% Reclamation Complete: 0

% Restored: 0

### Additional work needed to obtain 90% cover:

Overseed with desirables.

**Major Facilities Issues:**

**Additional Comments:**

**VEGETATION DATA****Vegetation Cover**

Species	First Hit % Cover				Ground Hit % Cover			
	T1	T2	T3	Mean	T1	T2	T3	Mean
<b>Acceptable Species</b>								
xTriticosecale rimpai 2	0	0	8	2.67	0	0	6	2
<b>Total Acceptable Cover</b>	<b>0</b>	<b>0</b>	<b>8</b>	<b>2.67</b>	<b>0</b>	<b>0</b>	<b>6</b>	<b>2</b>
<b>Undesirable Species</b>								
Bassia scoparia	0	0	10	3.33	0	0	4	1.33
<b>Total Undesirable Cover</b>	<b>0</b>	<b>0</b>	<b>10</b>	<b>3.33</b>	<b>0</b>	<b>0</b>	<b>4</b>	<b>1.33</b>
<b>Total Vegetative Cover:</b>	<b>0</b>	<b>0</b>	<b>18</b>	<b>6</b>	<b>0</b>	<b>0</b>	<b>10</b>	<b>3.33</b>
Litter	62	64	54	60	62	64	58	61.33
Rock	0	2	0	0.67	0	2	0	0.67
<b>Total Non-Vegetative Cover</b>	<b>62</b>	<b>66</b>	<b>54</b>	<b>60.67</b>	<b>62</b>	<b>66</b>	<b>58</b>	<b>62</b>
<b>Total Cover</b>	<b>62</b>	<b>66</b>	<b>72</b>	<b>66.67</b>	<b>62</b>	<b>66</b>	<b>68</b>	<b>65.33</b>
Bare	38	34	28	33.33	38	34	32	34.67

**Species List**

Species	Frequency on Pad	Relative % Cover		
	# of occurrences out of 3 possible	Grasses	Forbs	Shrubs
Atriplex canescens	2	44.44		
Bassia scoparia	3		55.56	
Bromus arvensis	Observed			0
Bromus tectorum	1			
Chrysothamnus viscidiflorus	Observed			
Eremopyrum triticeum	2			
Halogeton glomeratus	1			
Lepidium perfoliatum	1			
Melilotus officinalis	Observed			
Polygonum aviculare	Observed			
Polygonum erectum	1			
Sarcobatus vermiculatus	Observed			
xTriticosecale rimpai 1	Observed			
xTriticosecale rimpai 2	3			
Unknown Chenopod 2	Observed			

Transect	% Slope	Aspect
1	15	SE
2	10	SW
3	18	SE

## GR 32-34



GR 32-34 North

Photo Date: 7/24/2008

X: 2268723.16525 Y: 1610662.22301



GR 32-34 East

Photo Date: 7/24/2008

X: 2268598.40734 Y: 1610722.76057



GR 32-34 South

Photo Date: 7/24/2008

X: 2268954.63574 Y: 1610874.75293



GR 32-34 West

Photo Date: 7/24/2008

X: 2268934.20959 Y: 1610710.21672



GR 32-34 Sample Point 1

Photo Date: 7/24/2008

X: 2268693.00551 Y: 1610775.74086



GR 32-34 Sample Point 2

Photo Date: 7/24/2008

X: 2268956.25345 Y: 1610853.50604



GR 32-34 Sample Point 3

Photo Date: 7/24/2008

X: 2268868.20807 Y: 1610694.86880

**Well ID: GR 44-33V**

Monitor Date: 7/25/2008

Observers: N. Weisenbacher

**Reclamation Status as of July 2008:** Reclaimed

**Approximate Seed Date:**

**Vegetation Community:** Pinon-Juniper Woodland North Aspect

## VEGETATION

**Total Acceptable Vegetation % Cover:** 22

**Reference Area % Cover:** 28.26

**90% of Reference Area?** No

**Relative % Cover of:** Grasses 81.82 Forbs 18.18 Shrubs 0

### Desirable Vegetation

**Appears vigorous and self sustaining?** Yes

☒ New Shoots

☒ Litter

**Size:** Healthy

☒ Flowers / Seeds

☒ Seedlings

**Color / Vigor:** Healthy

### Comments

### Undesirable Vegetation

**Noxious Weeds Present?** Yes Cheatgrass interspersed on some portions. Some Russian thistle, kochia.

**Undesirable Species <5% of Total Cover:** < 5%

## EROSION

**Erosion Issues:** None

### BLM RECLAMATION TIMETABLE:

% Area in Use: 20

% Monitor: 70

% Acceptable: 10

% Reclamation Complete: 0

% Restored: 0

### Additional work needed to obtain 90% cover:

monitor weeds, possibly overseed to boost desirable cover.

### Major Facilities Issues:

### Additional Comments:

VEGETATION DATA

## Vegetation Cover

Species	First Hit % Cover				Ground Hit % Cover			
	T1	T2	T3	Mean	T1	T2	T3	Mean
<b>Acceptable Species</b>								
Agropyron cristatum	6	2		2.67	2	0		0.67
Bromus inermis	4	2	0	2	2	0	0	0.67
Melilotus officinalis	4		0	1.33	0		0	0
Medicago sativa	0	6	2	2.67	0	0	0	0
Pascopyrum smithii	26	14	0	13.33	2	8	0	3.33
<b>Total Acceptable Cover</b>	<b>40</b>	<b>24</b>	<b>2</b>	<b>22</b>	<b>6</b>	<b>8</b>	<b>0</b>	<b>4.67</b>
<b>Total Vegetative Cover:</b>	<b>40</b>	<b>24</b>	<b>2</b>	<b>22</b>	<b>6</b>	<b>8</b>	<b>0</b>	<b>4.67</b>
Litter	36	26	34	32	62	38	34	44.67
Rock	2	4	0	2	4	4	0	2.67
Standing Litter	2			0.67	0			0
<b>Total Non-Vegetative Cover</b>	<b>40</b>	<b>30</b>	<b>34</b>	<b>34.67</b>	<b>66</b>	<b>42</b>	<b>34</b>	<b>47.34</b>
<b>Total Cover</b>	<b>80</b>	<b>54</b>	<b>36</b>	<b>56.67</b>	<b>72</b>	<b>50</b>	<b>34</b>	<b>52.01</b>
Bare	20	46	64	43.33	28	50	66	48

## Species List

Species	Frequency on Pad	Relative % Cover		
	# of occurrences out of 3 possible	Grasses	Forbs	Shrubs
Achnatherum hymenoides	1	81.82		
Agropyron cristatum	2		18.18	
Atriplex canescens	1			0
Atriplex confertifolia	Observed			
Bassia scoparia	Observed			
Bromus arvensis	1			
Bromus inermis	3			
Bromus tectorum	2			
Chrysothamnus viscidiflorus	Observed			
Elymus lanceolatus	Observed			
Eremopyrum triticeum	Observed			
Helianthus annuus	Observed			
Krascheninnikovia lanata	1			
Lactuca serriola	Observed			
Leymus cinereus	1			
Lepidium perfoliatum	Observed			
Melilotus officinalis	2			
Medicago sativa	3			
Pascopyrum smithii	3			
Psathyrostachys juncea	Observed			
Salsola kali	Observed			
Thinopyrum intermedium	Observed			
Tragopogon dubius	Observed			
Unknown Fabaceae	1			

Transect	% Slope	Aspect
1	5	SE
2	30	NE
3	5	SE



## GR 44-33V



GR 44-33V North

Photo Date: 7/25/2008

X: 2264355.31650 Y: 1608344.23213



GR 44-33V East

Photo Date: 7/25/2008

X: 2264337.15063 Y: 1608443.76656



GR 44-33V South

Photo Date: 7/25/2008

X: 2264435.17957 Y: 1608551.56402



GR 44-33V West

Photo Date: 7/25/2008

X: 2264515.94747 Y: 1608512.31269



GR 44-33V Sample Point 1

Photo Date: 7/25/2008

X: 2264448.65334 Y: 1608339.23941



GR 44-33V Sample Point 2

Photo Date: 7/25/2008

X: 2264346.93261 Y: 1608360.50293



GR 44-33V Sample Point 3

Photo Date: 7/25/2008

X: 2264411.50601 Y: 1608545.97066

**Well ID: GV 24-36**

Monitor Date: 7/24/2008

Observers: N. Weisenbacher

**Reclamation Status as of July 2008:** Not reclaimed

Pad ripped and graded.

**Approximate Seed Date:**

**Vegetation Community:** Pinon-Juniper Woodland South Aspect

## VEGETATION

**Reference Area % Cover:** 10.2

### Desirable Vegetation

**Appears vigorous and self sustaining?**

☐ New Shoots

☐ Litter

**Size:**

☐ Flowers / Seeds

☐ Seedlings

**Color / Vigor:**

**Comments**

### Undesirable Vegetation

**Noxious Weeds Present?** Tamarisk in drainage.

**Undesirable Species <5% of Total Cover:**

## EROSION

**Erosion Issues:** None

### BLM RECLAMATION TIMETABLE:

**Additional work needed to obtain 90% cover:**

% Area in Use: 100

% Monitor: 0

% Acceptable: 0

% Reclamation Complete: 0

% Restored: 0

**Major Facilities Issues:**

**Additional Comments:**

**GV 24-36**

**VEGETATION DATA**

**Vegetation Cover**

**First Hit % Cover**

**Ground Hit % Cover**

**Species**

**T1**

**T2**

**T3**

**Mean**

**T1**

**T2**

**T3**

**Mean**

No Data

**Species List**

## GV 24-36



GV 24-36 North

Photo Date: 7/24/2008

X: 2278208.52613 Y: 1608217.98078



GV 24-36 East

Photo Date: 7/24/2008

X: 2278103.21049 Y: 1608330.26963



GV 24-36 South

Photo Date: 7/24/2008

X: 2278308.17437 Y: 1608482.61013



GV 24-36 West

Photo Date: 7/24/2008

X: 2278411.94602 Y: 1608366.01871

**Well ID: GV 41-34**

Monitor Date: 7/18/2008

Observers: N. Weisenbacher

**Reclamation Status as of July 2008:** Reclaimed

**Approximate Seed Date:**

**Vegetation Community:** Salt Desert Scrubland Low Elevation

## VEGETATION

**Total Acceptable Vegetation % Cover:** 3.33

**Reference Area % Cover:** 25.8

**90% of Reference Area?** No

**Relative % Cover of:** Grasses 29.39 Forbs 70.55 Shrubs 0

## Desirable Vegetation

**Appears vigorous and self sustaining?** Yes

☐ New Shoots

☐ Litter

**Size:** Healthy in some areas

☒ Flowers / Seeds

☐ Seedlings

**Color / Vigor:**

## Comments

## Undesirable Vegetation

**Noxious Weeds Present?** Yes Cheatgrass interspersed. South and southeast portion of pad looks to have been redisturbed and is very weedy.

**Undesirable Species <5% of Total Cover:** > 5%

## EROSION

**Erosion Issues:** None

## BLM RECLAMATION TIMETABLE:

% Area in Use: 20

% Monitor: 75

% Acceptable: 5

% Reclamation Complete: 0

% Restored: 0

## Additional work needed to obtain 90% cover:

Quite a few bare patches, weed control and overseeding recommended, various areas redisturbed and look to need seeding.

**Major Facilities Issues:** Fence is down.

**Additional Comments:**

VEGETATION DATA

## Vegetation Cover

Species	First Hit % Cover				Ground Hit % Cover			
	T1	T2	T3	Mean	T1	T2	T3	Mean
<b>Acceptable Species</b>								
Thinopyrum ponticum	2	2	6	3.33	0	2	2	1.33
<b>Total Acceptable Cover</b>	<b>2</b>	<b>2</b>	<b>6</b>	<b>3.33</b>	<b>0</b>	<b>2</b>	<b>2</b>	<b>1.33</b>
<b>Undesirable Species</b>								
Bassia scoparia	10	8	2	6.67	2	6	0	2.67
Lepidium perfoliatum	2	0	0	0.67	0	0	0	0
Salsola kali			2	0.67			0	0
<b>Total Undesirable Cover</b>	<b>12</b>	<b>8</b>	<b>4</b>	<b>8.01</b>	<b>2</b>	<b>6</b>	<b>0</b>	<b>2.67</b>
<b>Total Vegetative Cover:</b>	<b>14</b>	<b>10</b>	<b>10</b>	<b>11.34</b>	<b>2</b>	<b>8</b>	<b>2</b>	<b>4</b>
Litter	2	12	20	11.33	4	12	28	14.67
Rock	14	12	10	12	18	12	10	13.33
Standing Litter	12	6	18	12	0	0	0	0
<b>Total Non-Vegetative Cover</b>	<b>28</b>	<b>30</b>	<b>48</b>	<b>35.33</b>	<b>22</b>	<b>24</b>	<b>38</b>	<b>28</b>
<b>Total Cover</b>	<b>42</b>	<b>40</b>	<b>58</b>	<b>46.67</b>	<b>24</b>	<b>32</b>	<b>40</b>	<b>32</b>
Bare	58	60	42	53.33	76	68	60	68

## Species List

Species	Frequency on Pad	Relative % Cover		
	# of occurrences out of 3 possible			
Agropyron cristatum	Observed	Grasses	29.39	
Bassia scoparia	3	Forbs	70.55	
Bromus tectorum	Observed	Shrubs	0	
Eremopyrum triticeum	Observed			
Grindelia squarrosa	Observed			
Hordeum jubatum	Observed			
Lactuca serriola	Observed			
Lepidium perfoliatum	3			
Psathyrostachys juncea	1			
Salsola kali	1			
Sarcobatus vermiculatus	Observed			
Thinopyrum ponticum	3			

Transect	% Slope	Aspect
1	3	S
2	11	S
3	10	SE



## GV 41-34



GV 41-34 North

Photo Date: 7/18/2008

X: 2296658.42448

Y: 1607352.30365



GV 41-34 East

Photo Date: 7/18/2008

X: 2296463.08465

Y: 1607555.26261



GV 41-34 South

Photo Date: 7/18/2008

X: 2296706.95565

Y: 1607555.19097



GV 41-34 West

Photo Date: 7/18/2008

X: 2296776.48622

Y: 1607477.46276



GV 41-34 Sample Point 1

Photo Date: 7/18/2008

X: 2296723.02444

Y: 1607530.09434



GV 41-34 Sample Point 2

Photo Date: 7/18/2008

X: 2296585.40658

Y: 1607535.67524



GV 41-34 Sample Point 3

Photo Date: 7/18/2008

X: 2296478.21285

Y: 1607552.45600

**Well ID: GV 5-33**

Monitor Date: 7/26/2008

Observers: N. Weisenbacher

**Reclamation Status as of July 2008:** Reclaimed

**Approximate Seed Date:**

**Vegetation Community:** Pinon-Juniper Woodland South Aspect

## VEGETATION

**Total Acceptable Vegetation % Cover:** 18.01

**Reference Area % Cover:** 10.2

**90% of Reference Area?** Yes

**Relative % Cover of:** Grasses 73.49 Forbs 20.58 Shrubs 5.879

### Desirable Vegetation

**Appears vigorous and self sustaining?** Yes

☒ New Shoots

☒ Litter

**Size:** Healthy

☒ Flowers / Seeds

☐ Seedlings

**Color / Vigor:** Healthy

**Comments** Desirables healthy but sparse.

### Undesirable Vegetation

**Noxious Weeds Present?** Yes Cheatgrass, kochia interspersed across site.

**Undesirable Species <5% of Total Cover:** < 5%

## EROSION

**Erosion Issues:** Rills >3"

Erosion photo 1: on southwest portion looking southwest.

### BLM RECLAMATION TIMETABLE:

% Area in Use: 20

% Monitor: 80

% Acceptable: 0

% Reclamation Complete: 0

% Restored: 0

### Additional work needed to obtain 90% cover:

Some areas need overseeding due to sparse cover and weeds.

### Major Facilities Issues:

### Additional Comments:



**VEGETATION DATA****Vegetation Cover**

Species	First Hit % Cover				Ground Hit % Cover			
	T1	T2	T3	Mean	T1	T2	T3	Mean
<b>Acceptable Species</b>								
Atriplex confertifolia			2	0.67			0	0
Bromus inermis	4	0	4	2.67	2	0	0	0.67
Chrysothamnus viscidiflorus			2	0.67			0	0
Grindelia squarrosa	0	2		0.67	0	0		0
Medicago sativa	10			3.33	2			0.67
Pascopyrum smithii	12	14	4	10	2	6	0	2.67
<b>Total Acceptable Cover</b>	<b>26</b>	<b>16</b>	<b>12</b>	<b>18.01</b>	<b>6</b>	<b>6</b>	<b>0</b>	<b>4.01</b>
<b>Undesirable Species</b>								
Bassia scoparia	0	2		0.67	0	2		0.67
Bromus tectorum	0		12	4	0		4	1.33
<b>Total Undesirable Cover</b>	<b>0</b>	<b>2</b>	<b>12</b>	<b>4.67</b>	<b>0</b>	<b>2</b>	<b>4</b>	<b>2</b>
<b>Total Vegetative Cover:</b>	<b>26</b>	<b>18</b>	<b>24</b>	<b>22.68</b>	<b>6</b>	<b>8</b>	<b>4</b>	<b>6.01</b>
Litter	30	10	30	23.33	48	10	46	34.67
Rock	2	2	0	1.33	2	2	0	1.33
Standing Litter	6			2	0			0
<b>Total Non-Vegetative Cover</b>	<b>38</b>	<b>12</b>	<b>30</b>	<b>26.66</b>	<b>50</b>	<b>12</b>	<b>46</b>	<b>36</b>
<b>Total Cover</b>	<b>64</b>	<b>30</b>	<b>54</b>	<b>49.34</b>	<b>56</b>	<b>20</b>	<b>50</b>	<b>42.01</b>
Bare	36	70	46	50.67	44	80	50	58

**Species List**

Species	Frequency on Pad	Relative % Cover		
	# of occurrences out of 3 possible	Grasses	Forbs	Shrubs
Achnatherum hymenoides	1	73.49		
Achillea millefolium	Observed		20.58	
Agropyron cristatum	Observed			5.879
Atriplex confertifolia	1			
Bassia scoparia	2			
Bromus arvensis	3			
Bromus inermis	3			
Bromus tectorum	2			
Chrysothamnus viscidiflorus	1			
Elymus lanceolatus	Observed			
Eremopyrum triticeum	Observed			
Grindelia squarrosa	2			
Halogeton glomeratus	Observed			
Hordeum jubatum	3			
Lactuca serriola	2			
Leymus cinereus	Observed			
Lepidium perfoliatum	1			
Melilotus officinalis	Observed			
Medicago sativa	1			
Pascopyrum smithii	3			
Polygonum aviculare	Observed			

Transect	% Slope	Aspect
1	8	S
2	5	NE
3	18	N/NE

Polygonum erectum	1
Sarcobatus vermiculatus	Observed
Thinopyrum intermedium	Observed
Unknown Fabaceae 8	Observed
Yucca harrimaniae	1

## GV 5-33



GV 5-33 North

Photo Date: 7/26/2008

X: 2263555.48813 Y: 1609754.37799



GV 5-33 East

Photo Date: 7/26/2008

X: 2263439.90694 Y: 1609740.43283



GV 5-33 South

Photo Date: 7/26/2008

X: 2263538.57169 Y: 1609864.73355



GV 5-33 West

Photo Date: 7/26/2008

X: 2263567.22034 Y: 1609842.25367



GV 5-33 Sample Point 1

Photo Date: 7/26/2008

X: 2263565.96294 Y: 1609655.60129



GV 5-33 Sample Point 2

Photo Date: 7/26/2008

X: 2263409.16761 Y: 1609794.06589



GV 5-33 Sample Point 3

Photo Date: 7/26/2008

X: 2263552.07825 Y: 1609869.83554



GV 5-33 Erosion Picture 1

Photo Date: 7/26/2008

X: 2263499.28401 Y: 1609784.46017

**Well ID: MV 16-9**

BLM Land

Monitor Date: 7/25/2008

Observers: N. Weisenbacher

**Reclamation Status as of July 2008:** Not reclaimed

**Approximate Seed Date:**

**Vegetation Community:** Oak Brush Mountain Shrubland

## VEGETATION

**Reference Area % Cover:** 31.2

### Desirable Vegetation

**Appears vigorous and self sustaining?**

☐ New Shoots

☐ Litter

**Size:**

☐ Flowers / Seeds

☐ Seedlings

**Color / Vigor:**

**Comments**

### Undesirable Vegetation

**Noxious Weeds Present?** Kochia, Russian thistle present.

**Undesirable Species <5% of Total Cover:**

## EROSION

**Erosion Issues:** None

### BLM RECLAMATION TIMETABLE:

**Additional work needed to obtain 90% cover:**

% Area in Use: 100

% Monitor: 0

% Acceptable: 0

% Reclamation Complete: 0

% Restored: 0

**Major Facilities Issues:**

**Additional Comments:**

**MV 16-9**

**VEGETATION DATA**

**Vegetation Cover**

**First Hit % Cover**

**Ground Hit % Cover**

**Species**

**T1**

**T2**

**T3**

**Mean**

**T1**

**T2**

**T3**

**Mean**

---

No Data

**Species List**

## MV 16-9



MV 16-9 North

Photo Date: 7/25/2008

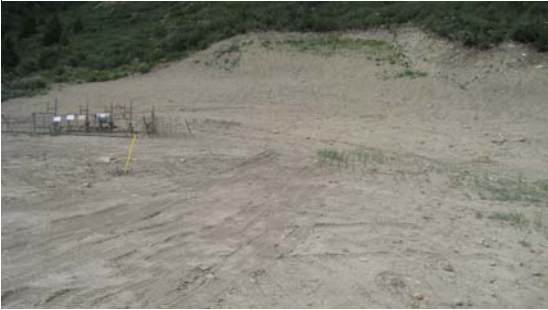
X: 2260240.93919 Y: 1601878.78341



MV 16-9 East

Photo Date: 7/25/2008

X: 2260233.92707 Y: 1601994.17298



MV 16-9 South

Photo Date: 7/25/2008

X: 2260377.56790 Y: 1602066.42040



MV 16-9 West

Photo Date: 7/25/2008

X: 2260470.07367 Y: 1601997.46409

**Well ID: MV 28-4**

BLM Land

Monitor Date: 7/25/2008

Observers: N. Weisenbacher

**Reclamation Status as of July 2008:** Not reclaimed

**Approximate Seed Date:**

**Vegetation Community:** Pinon-Juniper Woodland South Aspect

## VEGETATION

**Reference Area % Cover:** 10.2

### Desirable Vegetation

**Appears vigorous and self sustaining?**

☐ New Shoots

☐ Litter

**Size:**

☐ Flowers / Seeds

☐ Seedlings

**Color / Vigor:**

**Comments**

### Undesirable Vegetation

**Noxious Weeds Present?** Halogeton, kochia present.

**Undesirable Species <5% of Total Cover:**

## EROSION

**Erosion Issues:** None

### BLM RECLAMATION TIMETABLE:

**Additional work needed to obtain 90% cover:**

% Area in Use: 100

% Monitor: 0

% Acceptable: 0

% Reclamation Complete: 0

% Restored: 0

**Major Facilities Issues:**

**Additional Comments:**

**MV 28-4**

**VEGETATION DATA**

**Vegetation Cover**

**First Hit % Cover**

**Ground Hit % Cover**

<b>Species</b>	<b>T1</b>	<b>T2</b>	<b>T3</b>	<b>Mean</b>	<b>T1</b>	<b>T2</b>	<b>T3</b>	<b>Mean</b>
----------------	-----------	-----------	-----------	-------------	-----------	-----------	-----------	-------------

No Data

**Species List**



## MV 28-4



MV 28-4 North

Photo Date: 7/25/2008

X: 2261064.12578 Y: 1605908.10845



MV 28-4 East

Photo Date: 7/25/2008

X: 2261001.86622 Y: 1605966.71204



MV 28-4 South

Photo Date: 7/25/2008

X: 2261151.78226 Y: 1605964.52170



MV 28-4 West

Photo Date: 7/25/2008

X: 2261202.06003 Y: 1605925.46772

**Well ID: MV 34-5**

BLM Land

Monitor Date: 7/25/2008

Observers: N. Weisenbacher

**Reclamation Status as of July 2008:** Reclaimed

**Approximate Seed Date:**

**Vegetation Community:** Pinon-Juniper Woodland South Aspect

## VEGETATION

**Total Acceptable Vegetation % Cover:** 3.33

**Reference Area % Cover:** 10.2

**90% of Reference Area?** No

**Relative % Cover of:** Grasses 0 Forbs 100 Shrubs 0

### Desirable Vegetation

**Appears vigorous and self sustaining?** No

☒ New Shoots

☐ Litter

**Size:** Seedlings

☐ Flowers / Seeds

☒ Seedlings

**Color / Vigor:** Seedlings

**Comments** Some shrubs and forbs coming up, grass seedlings.

### Undesirable Vegetation

**Noxious Weeds Present?** Yes Bindweed. Kochia, Russian thistle present.

**Undesirable Species <5% of Total Cover:** < 5%

## EROSION

**Erosion Issues:** Gullying Erosion photo 1: on north / northeast portion of gully looking north.

### BLM RECLAMATION TIMETABLE:

% Area in Use: 20

% Monitor: 80

% Acceptable: 0

% Reclamation Complete: 0

% Restored: 0

### Additional work needed to obtain 90% cover:

Weeds dominate, monitor for appearance of desirables.

### Major Facilities Issues:

### Additional Comments:

**VEGETATION DATA****Vegetation Cover**

Species	First Hit % Cover				Ground Hit % Cover			
	T1	T2	T3	Mean	T1	T2	T3	Mean
<b>Acceptable Species</b>								
Melilotus officinalis	0	2	8	3.33	0	0	0	0
<b>Total Acceptable Cover</b>	<b>0</b>	<b>2</b>	<b>8</b>	<b>3.33</b>	<b>0</b>	<b>0</b>	<b>0</b>	<b>0</b>
<b>Undesirable Species</b>								
Bassia scoparia	0	4	4	2.67	0	6	2	2.67
<b>Total Undesirable Cover</b>	<b>0</b>	<b>4</b>	<b>4</b>	<b>2.67</b>	<b>0</b>	<b>6</b>	<b>2</b>	<b>2.67</b>
<b>Total Vegetative Cover:</b>	<b>0</b>	<b>6</b>	<b>12</b>	<b>6</b>	<b>0</b>	<b>6</b>	<b>2</b>	<b>2.67</b>
Litter	0	0	12	4	0	0	12	4
Rock	2	6	2	3.33	2	6	4	4
Standing Litter			2	0.67			0	0
<b>Total Non-Vegetative Cover</b>	<b>2</b>	<b>6</b>	<b>16</b>	<b>8</b>	<b>2</b>	<b>6</b>	<b>16</b>	<b>8</b>
<b>Total Cover</b>	<b>2</b>	<b>12</b>	<b>28</b>	<b>14</b>	<b>2</b>	<b>12</b>	<b>18</b>	<b>10.67</b>
Bare	98	88	72	86	98	88	82	89.33

**Species List**

Species	Frequency on Pad	Relative % Cover	
	# of occurrences out of 3 possible		
Artemisia tridentata	Observed	Grasses	0
Bassia scoparia	3	Forbs	100
Chenopodium album	1	Shrubs	0
Chrysothamnus viscidiflorus	Observed		
Convolvulus arvensis	Observed		
Lactuca serriola	Observed		
Melilotus officinalis	3	<b>Transect</b>	<b>% Slope Aspect</b>
Pascopyrum smithii	1	1	25 E
Polygonum aviculare	Observed	2	30 SE
Salsola kali	Observed	3	20 NE
Stanleya pinnata	Observed		
Unknown Fabaceae	1		
Unidentifiable grass	Observed		
Unknown Thistle	Observed		

## MV 34-5



MV 34-5 North

Photo Date: 7/25/2008

X: 2258738.61952 Y: 1603395.19378



MV 34-5 East

Photo Date: 7/25/2008

X: 2258616.32768 Y: 1603431.43751



MV 34-5 South

Photo Date: 7/25/2008

X: 2258791.47150 Y: 1603602.75888



MV 34-5 West

Photo Date: 7/25/2008

X: 2258923.71739 Y: 1603546.51065



MV 34-5 Sample Point 1

Photo Date: 7/25/2008

X: 2258702.68857 Y: 1603445.82559



MV 34-5 Sample Point 2

Photo Date: 7/25/2008

X: 2258753.86950 Y: 1603569.01481



MV 34-5 Sample Point 3

Photo Date: 7/25/2008

X: 2258909.39920 Y: 1603571.31457



MV 34-5 Erosion Picture 1

Photo Date: 7/25/2008

X: 2258951.44219 Y: 1603551.77022

**Well ID: MV 44-11**

Monitor Date: 7/25/2008

Observers: N. Weisenbacher

**Reclamation Status as of July 2008:** Reclaimed

**Approximate Seed Date:**

**Vegetation Community:** Pinon-Juniper Woodland South Aspect

## VEGETATION

**Total Acceptable Vegetative % Cover:** 0

**Reference Area % Cover:** 10.2

**90% of Reference Area?** No

**Relative % Cover of:** Grasses 0 Forbs 100 Shrubs 0

## Desirable Vegetation

**Appears vigorous and self sustaining?** No

☐ New Shoots

☐ Litter

**Size:** Seedlings are coming up

☐ Flowers / Seeds

☐ Seedlings

**Color / Vigor:**

**Comments** Desirables sparse, dominated by weeds. Southeast side redisturbed.

## Undesirable Vegetation

**Noxious Weeds Present?** Yes Cheatgrass. Russian thistle interspersed, kochia also.

**Undesirable Species <5% of Total Cover:** < 5%

## EROSION

**Erosion Issues:** Minor Looks to be intentional constructed channel.

## BLM RECLAMATION TIMETABLE:

## Additional work needed to obtain 90% cover:

% Area in Use: 20

Overseed desirables and weed control.

% Monitor: 80

% Acceptable: 0

% Reclamation Complete: 0

% Restored: 0

## Major Facilities Issues:

## Additional Comments:

**VEGETATION DATA****Vegetation Cover**

Species	First Hit % Cover				Ground Hit % Cover			
	T1	T2	T3	Mean	T1	T2	T3	Mean
<b>Undesirable Species</b>								
Bassia scoparia	4	8		4	4	4		2.67
<b>Total Undesirable Cover</b>	<b>4</b>	<b>8</b>		<b>4</b>	<b>4</b>	<b>4</b>		<b>2.67</b>
<b>Total Vegetative Cover:</b>	<b>4</b>	<b>8</b>		<b>4</b>	<b>4</b>	<b>4</b>		<b>2.67</b>
Litter	2	48	34	28	2	50	34	28.67
Rock	0	0	6	2	0	0	6	2
<b>Total Non-Vegetative Cover</b>	<b>2</b>	<b>48</b>	<b>40</b>	<b>30</b>	<b>2</b>	<b>50</b>	<b>40</b>	<b>30.67</b>
<b>Total Cover</b>	<b>6</b>	<b>56</b>	<b>40</b>	<b>34</b>	<b>6</b>	<b>54</b>	<b>40</b>	<b>33.34</b>
Bare	94	44	60	66	94	46	60	66.67

**Species List**

Species	Frequency on Pad	Relative % Cover	
	# of occurrences out of 3 possible		
Alyssum desertorum	Observed	Grasses	0
Artemisia tridentata	Observed	Forbs	100
Atriplex confertifolia	Observed	Shrubs	0
Bassia scoparia	2		
Bromus arvensis	Observed		
Bromus inermis	Observed		
Bromus tectorum	Observed		
Chenopodium album	1		
Halogeton glomeratus	Observed		
Lactuca serriola	1		
Lepidium perfoliatum	Observed		
Melilotus officinalis	Observed		
Medicago sativa	1		
Packera sp.	Observed		
Pascopyrum smithii	Observed		
Psathyrostachys juncea	Observed		
Salsola kali	Observed		
Thinopyrum ponticum	2		
Unknown Aster	5		

Transect	% Slope	Aspect
1	15	E
2	18	E/NE
3	5	SE



## MV 44-11



MV 44-11 North

Photo Date: 7/25/2008

X: 2273856.97101 Y: 1601328.08820



MV 44-11 East

Photo Date: 7/25/2008

X: 2273677.37900 Y: 1601233.37966



MV 44-11 South

Photo Date: 7/25/2008

X: 2273791.30281 Y: 1601448.59407



MV 44-11 West

Photo Date: 7/25/2008

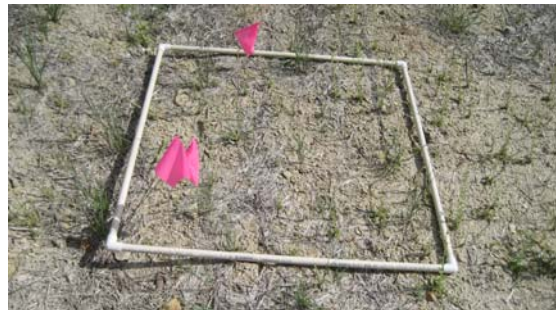
X: 2273828.61633 Y: 1601364.93173



MV 44-11 Sample Point 1

Photo Date: 7/25/2008

X: 2273729.37371 Y: 1601231.79507



MV 44-11 Sample Point 2

Photo Date: 7/25/2008

X: 2273734.94531 Y: 1601315.97525



MV 44-11 Sample Point 3

Photo Date: 7/25/2008

X: 2273785.08014 Y: 1601450.87007

**Well ID: MV 55-29**

Monitor Date: 7/26/2008

Observers: N. Weisenbacher

**Reclamation Status as of July 2008:** Reclaimed

**Approximate Seed Date:**

**Vegetation Community:** Pinon-Juniper Woodland North Aspect

## VEGETATION

**Total Acceptable Vegetation % Cover:** 19.34

**Reference Area % Cover:** 28.26

**90% of Reference Area?** No

**Relative % Cover of:** Grasses 74.38 Forbs 25.57 Shrubs 0

### Desirable Vegetation

**Appears vigorous and self sustaining?** Yes

☒ New Shoots

☒ Litter

**Size:** Healthy

☒ Flowers / Seeds

☒ Seedlings

**Color / Vigor:** Healthy

**Comments** Overall looks good, some sparse areas.

### Undesirable Vegetation

**Noxious Weeds Present?** Yes Chicory, cheatgrass interspersed in some areas. Kochia present.

**Undesirable Species <5% of Total Cover:** > 5%

## EROSION

**Erosion Issues:** None

### BLM RECLAMATION TIMETABLE:

% Area in Use: 10

% Monitor: 10

% Acceptable: 80

% Reclamation Complete: 0

% Restored: 0

### Additional work needed to obtain 90% cover:

Overseed sparse areas and weedy patches.

### Major Facilities Issues:

### Additional Comments:



**VEGETATION DATA****Vegetation Cover**

Species	First Hit % Cover				Ground Hit % Cover			
	T1	T2	T3	Mean	T1	T2	T3	Mean
<b>Acceptable Species</b>								
Pascopyrum smithii	24	6	26	18.67	10	0	2	4
xTriticosecale rimpaii 1	2			0.67	0			0
<b>Total Acceptable Cover</b>	<b>26</b>	<b>6</b>	<b>26</b>	<b>19.34</b>	<b>10</b>	<b>0</b>	<b>2</b>	<b>4</b>
<b>Undesirable Species</b>								
Bassia scoparia	2	4	2	2.67	2	4	0	2
Eremopyrum triticeum	0	4	2	2	0	0	0	0
Lactuca serriola	4	6		3.33	0	0		0
Lepidium perfoliatum	2		0	0.67	0		0	0
Sanguisorba minor	2			0.67	2			0.67
<b>Total Undesirable Cover</b>	<b>10</b>	<b>14</b>	<b>4</b>	<b>9.34</b>	<b>4</b>	<b>4</b>	<b>0</b>	<b>2.67</b>
<b>Total Vegetative Cover:</b>	<b>36</b>	<b>20</b>	<b>30</b>	<b>28.68</b>	<b>14</b>	<b>4</b>	<b>2</b>	<b>6.67</b>
Litter	40	54	40	44.67	70	72	60	67.33
Rock	2	0	0	0.67	2	0	0	0.67
Standing Litter	12	2	6	6.67	0	0	0	0
<b>Total Non-Vegetative Cover</b>	<b>54</b>	<b>56</b>	<b>46</b>	<b>52.01</b>	<b>72</b>	<b>72</b>	<b>60</b>	<b>68</b>
<b>Total Cover</b>	<b>90</b>	<b>76</b>	<b>76</b>	<b>80.69</b>	<b>86</b>	<b>76</b>	<b>62</b>	<b>74.67</b>
Bare	10	24	24	19.33	14	24	38	25.33

**Species List**

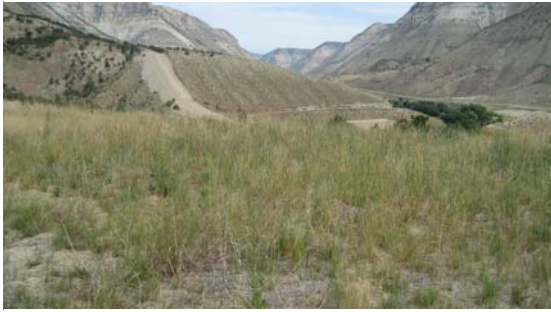
Species	Frequency on Pad # of occurrences out of 3 possible	Relative % Cover		
		Grasses	Forbs	Shrubs
Achnatherum hymenoides	Observed	74.38		
Agropyron cristatum	Observed		25.57	
Atriplex confertifolia	1			0
Bassia scoparia	3			
Bromus arvensis	Observed			
Bromus tectorum	Observed			
Chenopodium album	Observed			
Chrysothamnus viscidiflorus	Observed			
Cichorium intybus	Observed			
Elymus lanceolatus	Observed			
Elymus trachycaulus	Observed			
Ericameria nauseosa	Observed			
Eremopyrum triticeum	3			
Grindelia squarrosa	Observed			
Hordeum jubatum	1			
Lactuca serriola	2			
Lepidium perfoliatum	2			
Melilotus officinalis	2			
Pascopyrum smithii	3			
Plantago major	Observed			
Psathyrostachys juncea	Observed			
Sanguisorba minor	1			

Transect	% Slope	Aspect
1	25	NE
2	10	E/SE
3	15	N/NE

Sarcobatus vermiculatus	Observed
Tragopogon dubius	Observed
xTriticosecale rimpaii 1	1
Unknown Mustard 5	Observed

## MV 55-29



MV 55-29 North

Photo Date: 7/26/2008

X: 2256729.57494 Y: 1617721.63399



MV 55-29 East

Photo Date: 7/26/2008

X: 2256504.71940 Y: 1617656.41772



MV 55-29 South

Photo Date: 7/26/2008

X: 2256651.01585 Y: 1617841.87302



MV 55-29 West

Photo Date: 7/26/2008

X: 2256763.41955 Y: 1617763.38678



MV 55-29 Sample Point 1

Photo Date: 7/26/2008

X: 2256794.22178 Y: 1617760.16587



MV 55-29 Sample Point 2

Photo Date: 7/26/2008

X: 2256632.53216 Y: 1617754.19318



MV 55-29 Sample Point 3

Photo Date: 7/26/2008

X: 2256533.58037 Y: 1617655.19292

**Well ID: PA 11-34**

Monitor Date: 7/21/2008

Observers: N. Weisenbacher

**Reclamation Status as of July 2008:** Reclaimed

**Approximate Seed Date:** 2006

**Vegetation Community:** Pinon-Juniper Woodland South Aspect

## VEGETATION

**Total Acceptable Vegetation % Cover:** 10

**Reference Area % Cover:** 10.2

**90% of Reference Area?** Yes

**Relative % Cover of:** Grasses 62.5 Forbs 37.5 Shrubs 0

### Desirable Vegetation

**Appears vigorous and self sustaining?** Yes

☒ New Shoots

☒ Litter

**Size:** Healthy for most part

☒ Flowers / Seeds

☐ Seedlings

**Color / Vigor:** Healthy for most part

### Comments

### Undesirable Vegetation

**Noxious Weeds Present?** Yes Cheatgrass. Russian thistle present.

**Undesirable Species <5% of Total Cover:** > 5%

## EROSION

**Erosion Issues:** None

### BLM RECLAMATION TIMETABLE:

% Area in Use: 10

% Monitor: 90

% Acceptable: 0

% Reclamation Complete: 0

% Restored: 0

### Additional work needed to obtain 90% cover:

Northwest portion looking good but other portions of pad have larger bare or sparse areas. Site more recently reclaimed so watch and maybe weed control.

### Major Facilities Issues:

### Additional Comments:

VEGETATION DATA

## Vegetation Cover

Species	First Hit % Cover				Ground Hit % Cover			
	T1	T2	T3	Mean	T1	T2	T3	Mean
<b>Acceptable Species</b>								
Pascopyrum smithii		4		1.33		0		0
Psathyrostachys juncea	4	2	2	2.67	2	2	0	1.33
Thinopyrum ponticum	6	6	6	6	8	4	2	4.67
<b>Total Acceptable Cover</b>	<b>10</b>	<b>12</b>	<b>8</b>	<b>10</b>	<b>10</b>	<b>6</b>	<b>2</b>	<b>6</b>
<b>Undesirable Species</b>								
Bassia scoparia	2		4	2	0		2	0.67
Salsola kali		10	2	4		0	0	0
<b>Total Undesirable Cover</b>	<b>2</b>	<b>10</b>	<b>6</b>	<b>6</b>	<b>0</b>	<b>0</b>	<b>2</b>	<b>0.67</b>
<b>Total Vegetative Cover:</b>	<b>12</b>	<b>22</b>	<b>14</b>	<b>16</b>	<b>10</b>	<b>6</b>	<b>4</b>	<b>6.67</b>
Litter	36	44	64	48	36	60	74	56.67
Rock	0	0	4	1.33	0	0	4	1.33
<b>Total Non-Vegetative Cover</b>	<b>36</b>	<b>44</b>	<b>68</b>	<b>49.33</b>	<b>36</b>	<b>60</b>	<b>78</b>	<b>58</b>
<b>Total Cover</b>	<b>48</b>	<b>66</b>	<b>82</b>	<b>65.33</b>	<b>46</b>	<b>66</b>	<b>82</b>	<b>64.67</b>
Bare	52	34	18	34.67	54	34	18	35.33

## Species List

Species	Frequency on Pad	Relative % Cover		
	# of occurrences out of 3 possible			
Agropyron cristatum	Observed	Grasses	62.5	
Alyssum desertorum	1	Forbs	37.5	
Bassia scoparia	2	Shrubs	0	
Bromus arvensis	Observed			
Bromus inermis	Observed			
Bromus tectorum	2	<b>Transect</b>	<b>% Slope</b>	<b>Aspect</b>
Erodium cicutarium	Observed	1	10	S
Eremopyrum triticeum	Observed	2	25	W/SW
Halogeton glomeratus	Observed	3	Flat	(S/SE)
Lactuca serriola	Observed			
Medicago sativa	Observed			
Pascopyrum smithii	1			
Psathyrostachys juncea	3			
Salsola kali	2			
Sarcobatus vermiculatus	Observed			
Sisymbrium altissimum	Observed			
ralcea coccinea ssp. coccinea	Observed			
Thinopyrum ponticum	3			
Tragopogon dubius	Observed			



## PA 11-34



PA 11-34 North

Photo Date: 7/21/2008

X: 2296942.01592 Y: 1611144.05589



PA 11-34 East

Photo Date: 7/21/2008

X: 2296841.34618 Y: 1611405.80516



PA 11-34 South

Photo Date: 7/21/2008

X: 2297032.13392 Y: 1611521.63584



PA 11-34 West

Photo Date: 7/21/2008

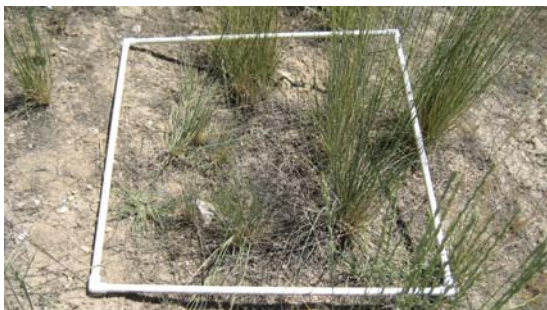
X: 2297056.43958 Y: 1611325.33690



PA 11-34 Sample Point 1

Photo Date: 7/21/2008

X: 2296984.20533 Y: 1611457.98799



PA 11-34 Sample Point 2

Photo Date: 7/21/2008

X: 2296881.71880 Y: 1611240.31942



PA 11-34 Sample Point 3

Photo Date: 7/21/2008

X: 2296975.71773 Y: 1611164.52789

**Well ID: PA 13-32**

Monitor Date: 7/23/2008

Observers: N. Weisenbacher

**Reclamation Status as of July 2008:** Reclaimed

**Approximate Seed Date:** 2005

**Vegetation Community:** Salt Desert Scrubland Low Elevation

## VEGETATION

**Total Acceptable Vegetation % Cover:** 10

**Reference Area % Cover:** 25.8

**90% of Reference Area?** No

**Relative % Cover of:** Grasses 48.83 Forbs 39.53 Shrubs 11.63

### Desirable Vegetation

**Appears vigorous and self sustaining?** Yes

☒ New Shoots

☒ Litter

**Size:** Healthy

☒ Flowers / Seeds

☐ Seedlings

**Color / Vigor:** Healthy

**Comments** Some sparse patches and dry-looking desirables.

### Undesirable Vegetation

**Noxious Weeds Present?** Yes Cheatgrass and erodium interspersed across site.

**Undesirable Species <5% of Total Cover:** > 5%

## EROSION

**Erosion Issues:** None

### BLM RECLAMATION TIMETABLE:

% Area in Use: 10

% Monitor: 90

% Acceptable: 0

% Reclamation Complete: 0

% Restored: 0

### Additional work needed to obtain 90% cover:

Some weed control and overseeding of weedy and bare patches may help, continue to monitor.

### Major Facilities Issues:

### Additional Comments:

VEGETATION DATA

## Vegetation Cover

Species	First Hit % Cover				Ground Hit % Cover			
	T1	T2	T3	Mean	T1	T2	T3	Mean
<b>Acceptable Species</b>								
Agropyron cristatum	12	2	4	6	6	0	2	2.67
Gutierrezia sarothrae		10	0	3.33		0	0	0
Thinopyrum intermedium	2			0.67	2			0.67
<b>Total Acceptable Cover</b>	<b>14</b>	<b>12</b>	<b>4</b>	<b>10</b>	<b>8</b>	<b>0</b>	<b>2</b>	<b>3.34</b>
<b>Undesirable Species</b>								
Bassia scoparia		24	0	8		0	0	0
Bromus tectorum	18	4		7.33	2	2		1.33
Erodium cicutarium	2			0.67	2			0.67
Lepidium perfoliatum		8		2.67		0		0
<b>Total Undesirable Cover</b>	<b>20</b>	<b>36</b>	<b>0</b>	<b>18.67</b>	<b>4</b>	<b>2</b>	<b>0</b>	<b>2</b>
<b>Total Vegetative Cover:</b>	<b>34</b>	<b>48</b>	<b>4</b>	<b>28.67</b>	<b>12</b>	<b>2</b>	<b>2</b>	<b>5.34</b>
Litter	26	30	24	26.67	40	86	24	50
Rock	4	2	4	3.33	8	2	4	4.67
Standing Litter		18	6	8		0	0	0
<b>Total Non-Vegetative Cover</b>	<b>30</b>	<b>50</b>	<b>34</b>	<b>38</b>	<b>48</b>	<b>88</b>	<b>28</b>	<b>54.67</b>
<b>Total Cover</b>	<b>64</b>	<b>98</b>	<b>38</b>	<b>66.67</b>	<b>60</b>	<b>90</b>	<b>30</b>	<b>60.01</b>
Bare	36	2	62	33.33	40	10	70	40

## Species List

Species	Frequency on Pad	Relative % Cover		
	# of occurrences out of 3 possible	Grasses	Forbs	Shrubs
Agropyron cristatum	3	48.83		
Artemisia tridentata	Observed		39.53	
Atriplex canescens	Observed			11.63
Atriplex confertifolia	1			
Bassia scoparia	2			
Bromus arvensis	Observed			
Bromus inermis	1	1	5	NE
Bromus tectorum	2	2	10	E/NE
Chenopodium album	1	3	5	N/NW
Chrysothamnus viscidiflorus	Observed			
Erodium cicutarium	1			
Eremopyrum triticeum	Observed			
Gutierrezia sarothrae	2			
Halogeton glomeratus	1			
Helianthus annuus	1			
Lactuca serriola	Observed			
Lepidium perfoliatum	1			
Ratibida columnifera	Observed			
Rumex crispus	Observed			
Sarcobatus vermiculatus	Observed			
Thinopyrum intermedium	1			
Tragopogon dubius	Observed			



Unknown Forb 11	Observed
Unknown Shrub 6	Observed
Zuckia brandegeei	1

## PA 13-32



PA 13-32 North

Photo Date: 7/23/2008

X: 2286306.92872

Y: 1609494.34925



PA 13-32 East

Photo Date: 7/23/2008

X: 2286286.97162

Y: 1609653.91889



PA 13-32 South

Photo Date: 7/23/2008

X: 2286475.10085

Y: 1609743.34508

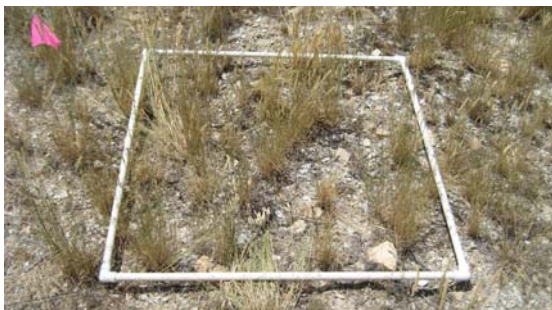


PA 13-32 West

Photo Date: 7/23/2008

X: 2286584.80769

Y: 1609585.91325



PA 13-32 Sample Point 1

Photo Date: 7/23/2008

X: 2286502.08925

Y: 1609477.84192



PA 13-32 Sample Point 2

Photo Date: 7/23/2008

X: 2286343.99503

Y: 1609633.64851



PA 13-32 Sample Point 3

Photo Date: 7/23/2008

X: 2286538.18486

Y: 1609766.96349

**Well ID: PA 13-34**

Monitor Date: 7/23/2008

Observers: N. Weisenbacher

**Reclamation Status as of July 2008:** Reclaimed

**Approximate Seed Date:** 2006

**Vegetation Community:** Salt Desert Scrubland Low Elevation

## VEGETATION

**Total Acceptable Vegetation % Cover:** 2.67

**Reference Area % Cover:** 25.8

**90% of Reference Area?** No

**Relative % Cover of:** Grasses 71.42 Forbs 28.57 Shrubs 0

### Desirable Vegetation

**Appears vigorous and self sustaining?** No

☐ New Shoots

☐ Litter

**Size:**

☐ Flowers / Seeds

☐ Seedlings

**Color / Vigor:**

### Comments

### Undesirable Vegetation

**Noxious Weeds Present?** Yes Most of reclaimed area is cheatgrass with Russian thistle, erodium also interspersed.

**Undesirable Species <5% of Total Cover:** > 5%

## EROSION

**Erosion Issues:** None

### BLM RECLAMATION TIMETABLE:

% Area in Use: 10

% Monitor: 90

% Acceptable: 0

% Reclamation Complete: 0

% Restored: 0

### Additional work needed to obtain 90% cover:

Weed control on most of pad and reseeding with desirables, caution around shrub regrowth.

### Major Facilities Issues:

### Additional Comments:

**VEGETATION DATA****Vegetation Cover**

Species	First Hit % Cover				Ground Hit % Cover			
	T1	T2	T3	Mean	T1	T2	T3	Mean
<b>Acceptable Species</b>								
Thinopyrum intermedium	6		2	2.67	4		2	2
<b>Total Acceptable Cover</b>	<b>6</b>		<b>2</b>	<b>2.67</b>	<b>4</b>		<b>2</b>	<b>2</b>
<b>Undesirable Species</b>								
Bromus tectorum	0	28	0	9.33	0	2	0	0.67
Erodium cicutarium	2	4	2	2.67	2	2	0	1.33
Eremopyrum triticeum		4		1.33		0		0
Lepidium perfoliatum		4		1.33		0		0
Salsola kali		2	0	0.67		0	0	0
Sisymbrium altissimum		0	2	0.67		0	0	0
<b>Total Undesirable Cover</b>	<b>2</b>	<b>42</b>	<b>4</b>	<b>16</b>	<b>2</b>	<b>4</b>	<b>0</b>	<b>2</b>
<b>Total Vegetative Cover:</b>	<b>8</b>	<b>42</b>	<b>6</b>	<b>18.67</b>	<b>6</b>	<b>4</b>	<b>2</b>	<b>4</b>
Litter	44	40	56	46.67	50	76	60	62
Rock	0	0	2	0.67	0	0	2	0.67
Standing Litter	12		10	7.33	0		0	0
<b>Total Non-Vegetative Cover</b>	<b>56</b>	<b>40</b>	<b>68</b>	<b>54.67</b>	<b>50</b>	<b>76</b>	<b>62</b>	<b>62.67</b>
<b>Total Cover</b>	<b>64</b>	<b>82</b>	<b>74</b>	<b>73.34</b>	<b>56</b>	<b>80</b>	<b>64</b>	<b>66.67</b>
Bare	36	18	26	26.67	44	20	36	33.33

**Species List**

Species	Frequency on Pad	Relative % Cover		
	# of occurrences out of 3 possible	Grasses	Forbs	Shrubs
Agropyron cristatum	Observed	71.42		
Alyssum desertorum	Observed		28.57	
Artemisia tridentata	Observed			0
Atriplex confertifolia	Observed			
Bassia scoparia	Observed			
Bromus tectorum	3			
Chrysothamnus viscidiflorus	Observed	1	7	E
Cichorium intybus	Observed	2	2	S/SE
Convolvulus arvensis	Observed	3	10	E
Erodium cicutarium	3			
Eremopyrum triticeum	1			
Grindelia squarrosa	Observed			
Gutierrezia sarothrae	Observed			
Helianthus annuus	Observed			
Hordeum jubatum	Observed			
Lactuca serriola	Observed			
Lepidium perfoliatum	1			
Melilotus officinalis	Observed			
Medicago sativa	Observed			
Psathyrostachys juncea	1			
Ratibida columnifera	Observed			
Salsola kali	2			

Sisymbrium altissimum	2
ralcea coccinea ssp. coccinea	Observed
Thinopyrum intermedium	2
Thinopyrum ponticum	Observed
xTriticosecale rimpai 1	3



## PA 13-34



PA 13-34 North

Photo Date: 7/23/2008

X: 2296479.73001

Y: 1608837.82906



PA 13-34 East

Photo Date: 7/23/2008

X: 2296278.39522

Y: 1608915.20881



PA 13-34 South

Photo Date: 7/23/2008

X: 2296373.29108

Y: 1609240.62806



PA 13-34 West

Photo Date: 7/23/2008

X: 2296552.89383

Y: 1609004.91570



PA 13-34 Sample Point 1

Photo Date: 7/23/2008

X: 2296342.86521

Y: 1609223.30144



PA 13-34 Sample Point 2

Photo Date: 7/23/2008

X: 2296375.69875

Y: 1608974.89419



PA 13-34 Sample Point 3

Photo Date: 7/23/2008

X: 2296497.93083

Y: 1609108.30528



**Well ID: PA 14-33**

Monitor Date: 7/23/2008

Observers: N. Weisenbacher

**Reclamation Status as of July 2008:** Reclaimed

**Approximate Seed Date:** 2006

**Vegetation Community:** Salt Desert Scrubland Low Elevation

## VEGETATION

**Total Acceptable Vegetation % Cover:** 16

**Reference Area % Cover:** 25.8

**90% of Reference Area?** No

**Relative % Cover of:** Grasses 83.9 Forbs 16.13 Shrubs 0

### Desirable Vegetation

**Appears vigorous and self sustaining?** Yes

☒ New Shoots

☐ Litter

**Size:** Some stunted

☒ Flowers / Seeds

☐ Seedlings

**Color / Vigor:** Some healthy

**Comments** Stunted and sickly on south side and many bare patches.

### Undesirable Vegetation

**Noxious Weeds Present?** Yes Cheatgrass, and erodium scattered on pad. Russian thistle present.

**Undesirable Species <5% of Total Cover:** < 5%

## EROSION

**Erosion Issues:** None

### BLM RECLAMATION TIMETABLE:

% Area in Use: 15

% Monitor: 75

% Acceptable: 10

% Reclamation Complete: 0

% Restored: 0

### Additional work needed to obtain 90% cover:

Overseeding.

### Major Facilities Issues:

### Additional Comments:

**VEGETATION DATA****Vegetation Cover**

Species	First Hit % Cover				Ground Hit % Cover			
	T1	T2	T3	Mean	T1	T2	T3	Mean
<b>Acceptable Species</b>								
Pascopyrum smithii		4	4	2.67		2	2	1.33
Psathyrostachys juncea	0	4	0	1.33	0	0	0	0
Thinopyrum intermedium		20		6.67		10		3.33
Thinopyrum ponticum	12		4	5.33	6		2	2.67
<b>Total Acceptable Cover</b>	<b>12</b>	<b>28</b>	<b>8</b>	<b>16</b>	<b>6</b>	<b>12</b>	<b>4</b>	<b>7.33</b>
<b>Undesirable Species</b>								
Eremopyrum triticeum	0	0	4	1.33	0	0	2	0.67
Lepidium perfoliatum	0	4	6	3.33	0	0	0	0
<b>Total Undesirable Cover</b>	<b>0</b>	<b>4</b>	<b>10</b>	<b>4.66</b>	<b>0</b>	<b>0</b>	<b>2</b>	<b>0.67</b>
<b>Total Vegetative Cover:</b>	<b>12</b>	<b>32</b>	<b>18</b>	<b>20.66</b>	<b>6</b>	<b>12</b>	<b>6</b>	<b>8</b>
Litter	22	26	12	20	22	38	20	26.67
Rock	2	6	16	8	2	6	16	8
Standing Litter	2		2	1.33	2		0	0.67
<b>Total Non-Vegetative Cover</b>	<b>26</b>	<b>32</b>	<b>30</b>	<b>29.33</b>	<b>26</b>	<b>44</b>	<b>36</b>	<b>35.34</b>
<b>Total Cover</b>	<b>38</b>	<b>64</b>	<b>48</b>	<b>49.99</b>	<b>32</b>	<b>56</b>	<b>42</b>	<b>43.34</b>
Bare	62	36	52	50	68	44	58	56.67

**Species List**

Species	Frequency on Pad	Relative % Cover		
	# of occurrences out of 3 possible	Grasses	Forbs	Shrubs
Atriplex canescens	3		83.9	
Atriplex confertifolia	2		16.13	
Bassia scoparia	2			0
Bromus inermis	Observed			
Bromus tectorum	Observed			
Elymus trachycaulus	Observed			
Erodium cicutarium	Observed			
Eremopyrum triticeum	3			
Halogeton glomeratus	Observed			
Lactuca serriola	Observed			
Leymus cinereus	Observed			
Lepidium perfoliatum	3			
Pascopyrum smithii	2			
Psathyrostachys juncea	3			
Salsola kali	Observed			
Thinopyrum intermedium	1			
Thinopyrum ponticum	2			
xTriticosecale rimpaii	Observed			
Unknown Fabaceae	Observed			

Transect	% Slope	Aspect
1	6	S
2	Flat	(S/SE)
3	6	SW

## PA 14-33



PA 14-33 North

Photo Date: 7/23/2008

X: 2291217.71060

Y: 1608334.97493



PA 14-33 East

Photo Date: 7/23/2008

X: 2291053.55403

Y: 1608467.15194



PA 14-33 South

Photo Date: 7/23/2008

X: 2291288.88073

Y: 1608629.95472



PA 14-33 West

Photo Date: 7/23/2008

X: 2291370.73757

Y: 1608547.92104



PA 14-33 Sample Point 1

Photo Date: 7/23/2008

X: 2291238.63500

Y: 1608364.94233



PA 14-33 Sample Point 2

Photo Date: 7/23/2008

X: 2291115.87729

Y: 1608487.83714



PA 14-33 Sample Point 3

Photo Date: 7/23/2008

X: 2291352.95477

Y: 1608524.52522

Well ID: PA 21-34

Monitor Date: 7/18/2008

Observers: N. Weisenbacher

Reclamation Status as of July 2008: Reclaimed

Approximate Seed Date: 2006

Vegetation Community: Pinon-Juniper Woodland South Aspect

## VEGETATION

Total Acceptable Vegetative % Cover: 0

Reference Area % Cover: 10.2

90% of Reference Area? No

Relative % Cover of: Grasses 40.74 Forbs 59.26 Shrubs 0

## Desirable Vegetation

Appears vigorous and self sustaining? No

☐ New Shoots

☐ Litter

Size:

☐ Flowers / Seeds

☐ Seedlings

Color / Vigor:

## Comments

## Undesirable Vegetation

Noxious Weeds Present? Yes Lots of cheatgrass, some erodium, site is mostly weeds. Appears as if pad is not seeded. Lost of Russian Thistle.

Undesirable Species <5% of Total Cover: > 5%

## EROSION

Erosion Issues: None

## BLM RECLAMATION TIMETABLE:

% Area in Use: 10

% Monitor: 90

% Acceptable: 0

% Reclamation Complete: 0

% Restored: 0

## Additional work needed to obtain 90% cover:

Weed control and seeding. Pad appears not to have been seeded and consists mostly of weed species.

## Major Facilities Issues:

## Additional Comments:

**VEGETATION DATA****Vegetation Cover**

Species	First Hit % Cover				Ground Hit % Cover			
	T1	T2	T3	Mean	T1	T2	T3	Mean
<b>Undesirable Species</b>								
Bassia scoparia	0		0	0	0		2	0.67
Bromus tectorum	0	10	34	14.67	0	2	4	2
Salsola kali	20	2		7.33	6	0		2
Sisymbrium altissimum	12	28	2	14	0	2	0	0.67
<b>Total Undesirable Cover</b>	<b>32</b>	<b>40</b>	<b>36</b>	<b>36</b>	<b>6</b>	<b>4</b>	<b>6</b>	<b>5.34</b>
<b>Total Vegetative Cover:</b>	<b>32</b>	<b>40</b>	<b>36</b>	<b>36</b>	<b>6</b>	<b>4</b>	<b>6</b>	<b>5.34</b>
Litter	6	28	34	22.67	14	56	58	42.67
Rock	0	2	0	0.67	0	2	0	0.67
Standing Litter	4	10	2	5.33	0	0	0	0
<b>Total Non-Vegetative Cover</b>	<b>10</b>	<b>40</b>	<b>36</b>	<b>28.67</b>	<b>14</b>	<b>58</b>	<b>58</b>	<b>43.34</b>
<b>Total Cover</b>	<b>42</b>	<b>80</b>	<b>72</b>	<b>64.67</b>	<b>20</b>	<b>62</b>	<b>64</b>	<b>48.68</b>
Bare	58	20	28	35.33	80	38	36	51.33

**Species List**

Species	Frequency on Pad	Relative % Cover		
	# of occurrences out of 3 possible	Grasses	Forbs	Shrubs
Agropyron cristatum	Observed	40.74		
Artemisia tridentata	Observed		59.26	
Bassia scoparia	2			0
Bromus inermis	Observed			
Bromus tectorum	3			
Centaurea sp.	1			
Chrysothamnus viscidiflorus	Observed	1	18	S/SE
Convolvulus arvensis	Observed	2	7	S/SE
Erodium cicutarium	Observed	3	10	S/SE
Eremopyrum triticeum	Observed			
Gutierrezia sarothrae	Observed			
Hordeum jubatum	Observed			
Lactuca serriola	Observed			
Lepidium perfoliatum	Observed			
Melilotus officinalis	1			
Psathyrostachys juncea	Observed			
Salsola kali	2			
Sisymbrium altissimum	3			
ralcea coccinea ssp. coccinea	Observed			
Thinopyrum intermedium	Observed			
Tragopogon dubius	2			
Unknown Aster	1			



## PA 21-34



PA 21-34 North

Photo Date: 7/18/2008

X: 2298316.93093 Y: 1611374.19377



PA 21-34 East

Photo Date: 7/18/2008

X: 2298246.62714 Y: 1611608.17122



PA 21-34 South

Photo Date: 7/18/2008

X: 2298466.77200 Y: 1611637.67124



PA 21-34 West

Photo Date: 7/18/2008

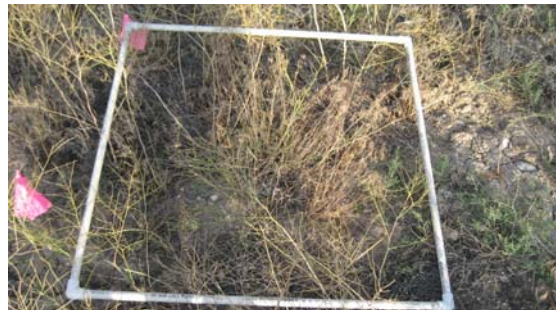
X: 2298557.99972 Y: 1611519.23720



PA 21-34 Sample Point 1

Photo Date: 7/18/2008

X: 2298435.66473 Y: 1611431.20734



PA 21-34 Sample Point 2

Photo Date: 7/18/2008

X: 2298509.75170 Y: 1611632.27599



PA 21-34 Sample Point 3

Photo Date: 7/18/2008

X: GPS data not available Y: