

Williams Production RMT Company

**SPACING & 10 ACRE DENSITY
APPLICATION**

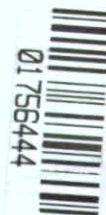
Piceance Basin
Garfield County, Colorado
T7S R96W W/2NW/4 of Sec 35

- Williams 100% WI
- Williams Partial Interest
- Unleased Minerals or Leased to Others
- Producing
- Location
- Proposed 160 Acre Drilling & Spacing Unit
- I-70
- Railroad
- Stream

EXHIBIT "L-1"

CAUSE NO.:

DOCKET NO.:



01756444

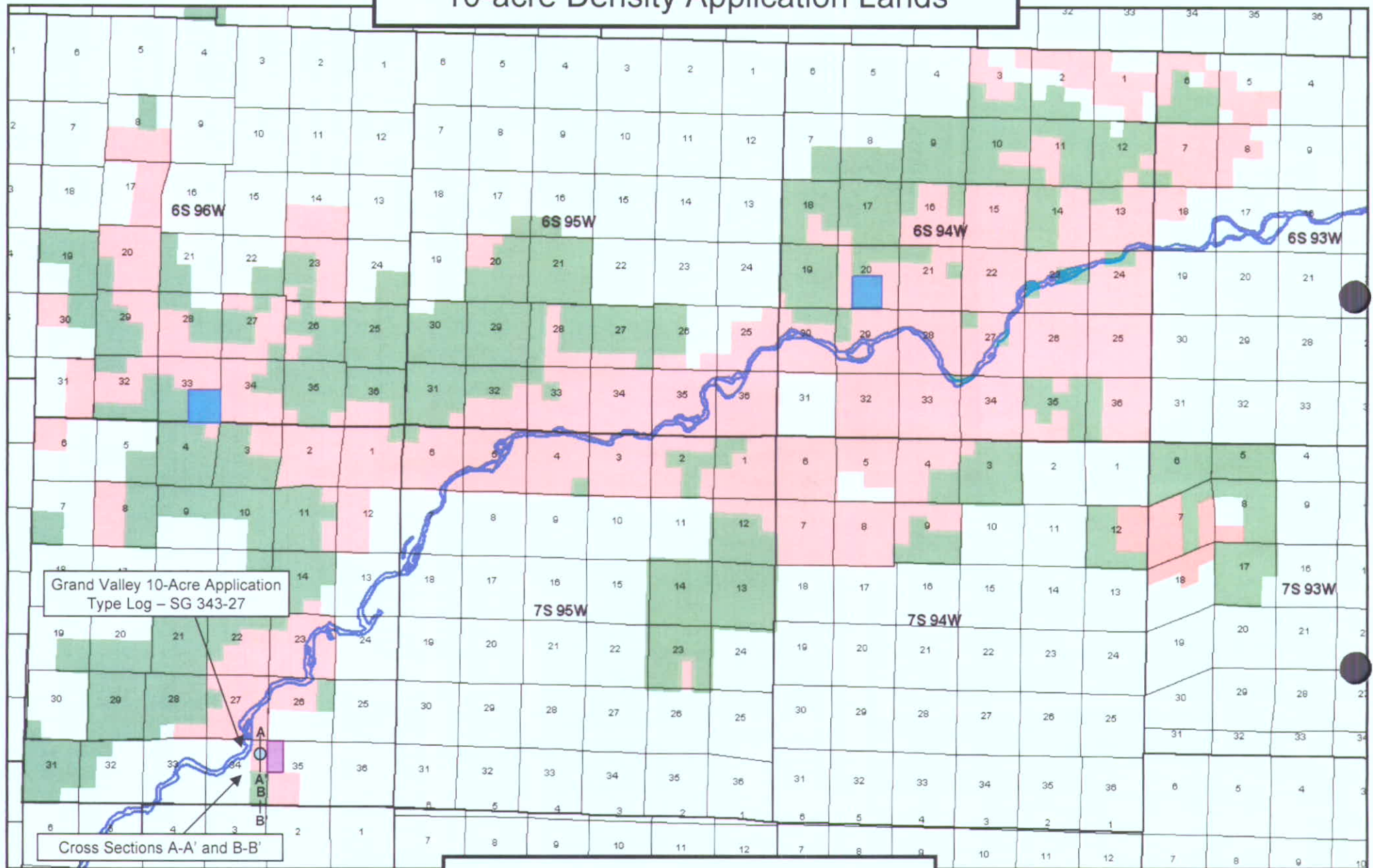
RECEIVED

AUG - 9 07

COGCC

510-39

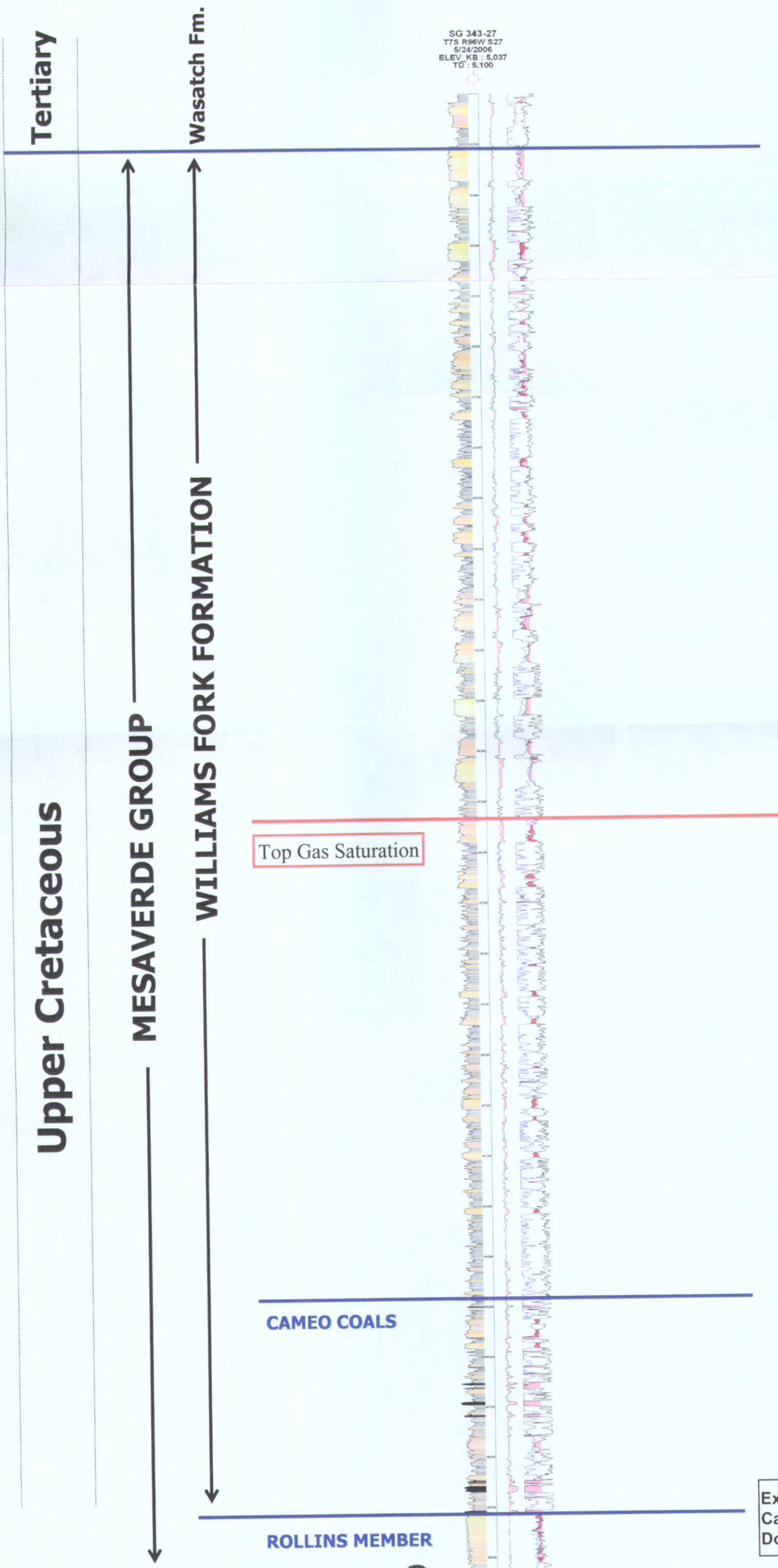
10-acre Density Application Lands



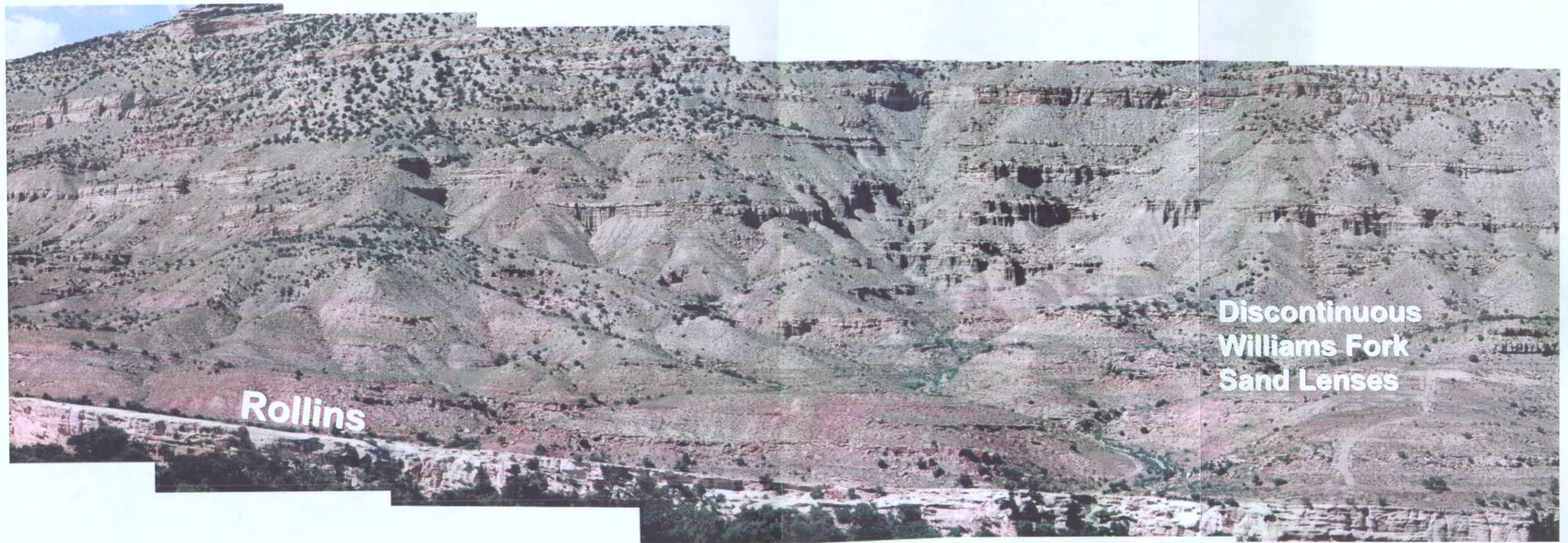
Purple = Application Area
 Green = Approved Federal 10-acre Density
 Red = Approved Fee 10-acre Density
 Blue = 10-acre Pilot Areas (2001)

Exhibit: A-2
 Cause No.: 510
 Docket No.: 0710-SP-28

Type Log for the Mesaverde Group,
South Grand Valley Field Area, Garfield County, Colorado



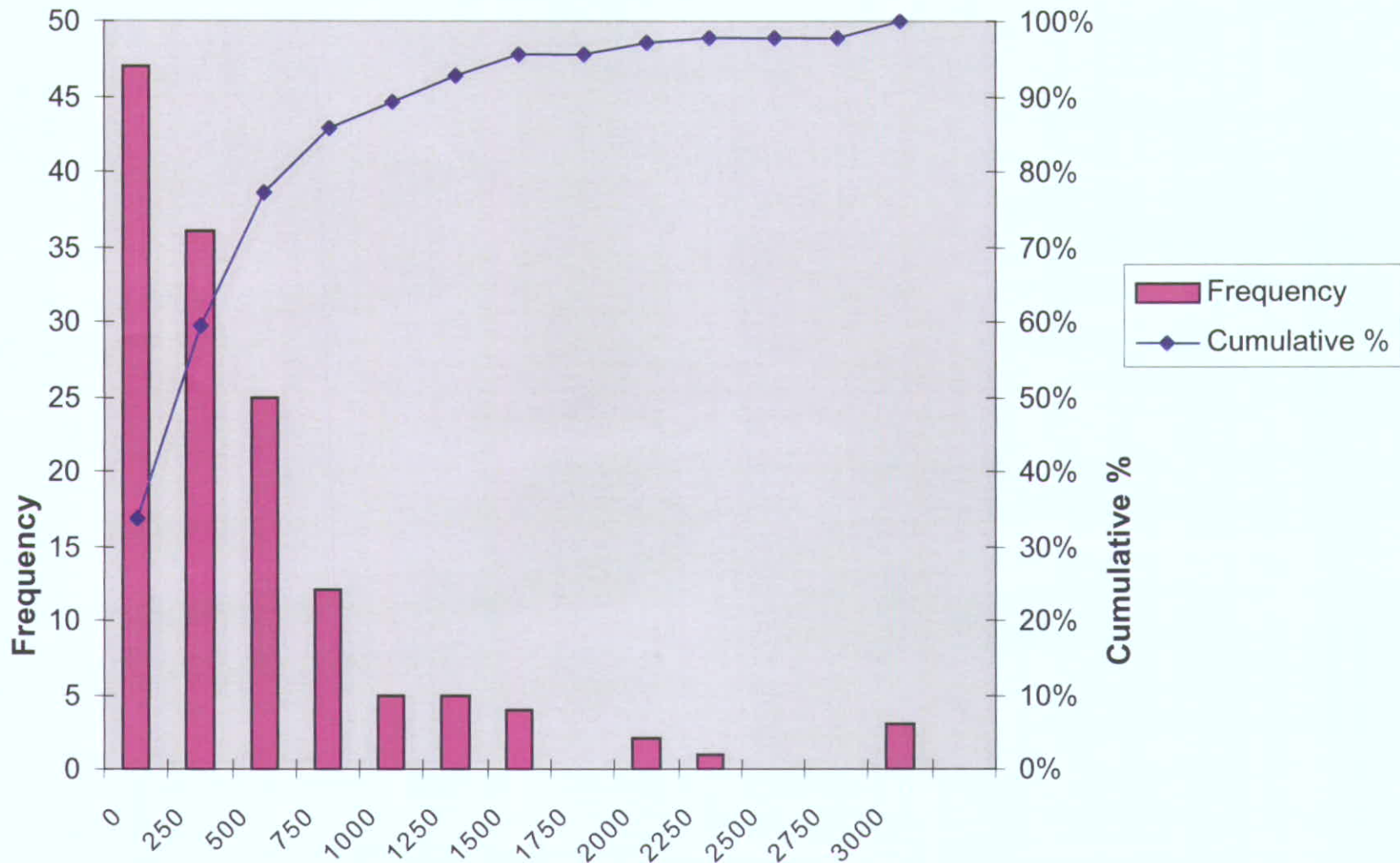
Mesaverde Outcrop, Coal Canyon Near Cameo, Colorado



- Approximately 24 miles southwest of Grand Valley Field, very similar lower Williams Fork section to that producing in Grand Valley, Parachute, and Rulison Fields
- Outcrop study of excellent exposures near Cameo, Colorado was undertaken to gather data on sand body extents

Exhibit B-3
Cause No. 510
Docket No. 0710-SP-28

Williams Fork Outcrop Sand Body Sizes



Average Extents of 137 Sand Bodies=682 ft

Exhibit B-4
Cause No. 510
Docket No. 0710-SP-28

Williams Fork Sandstone Bodies With Hypothetical 10-acre wells

Western Margin of Piceance Basin - Mesaverde Outcrop in Coal Canyon (near Cameo, Colorado)

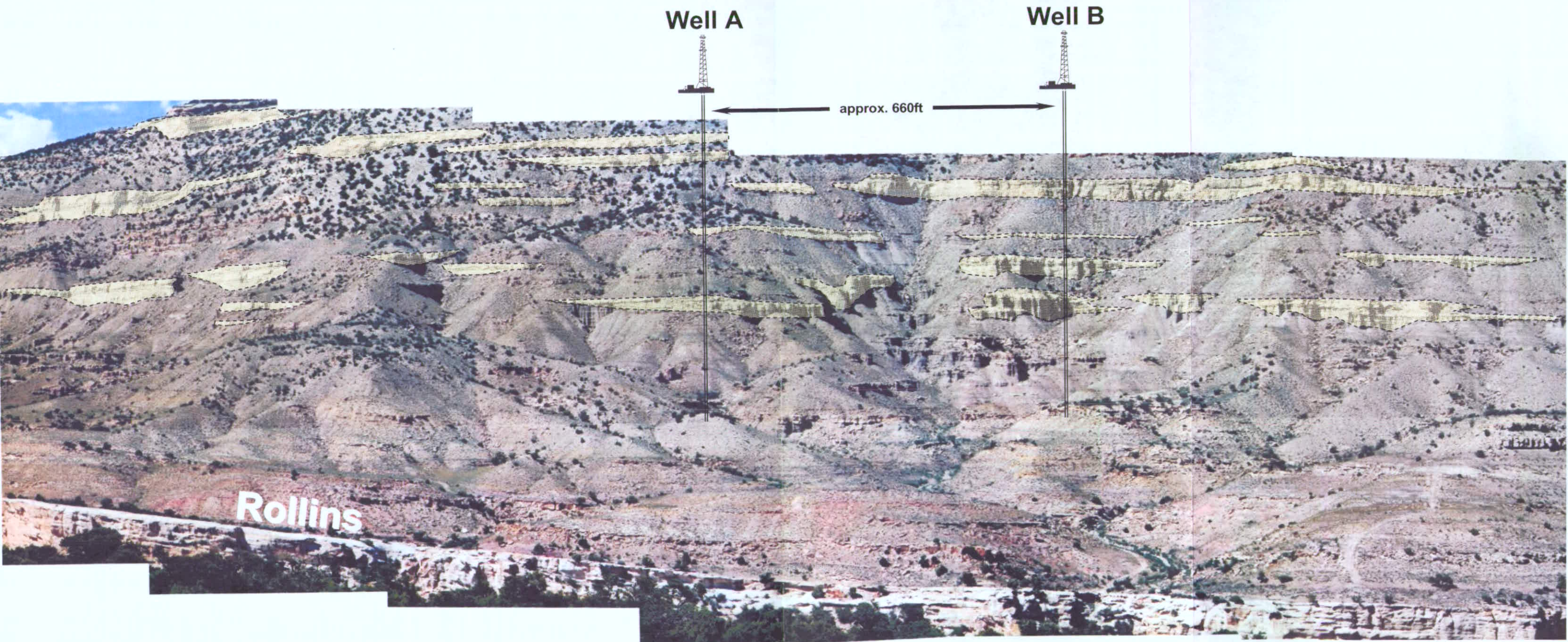
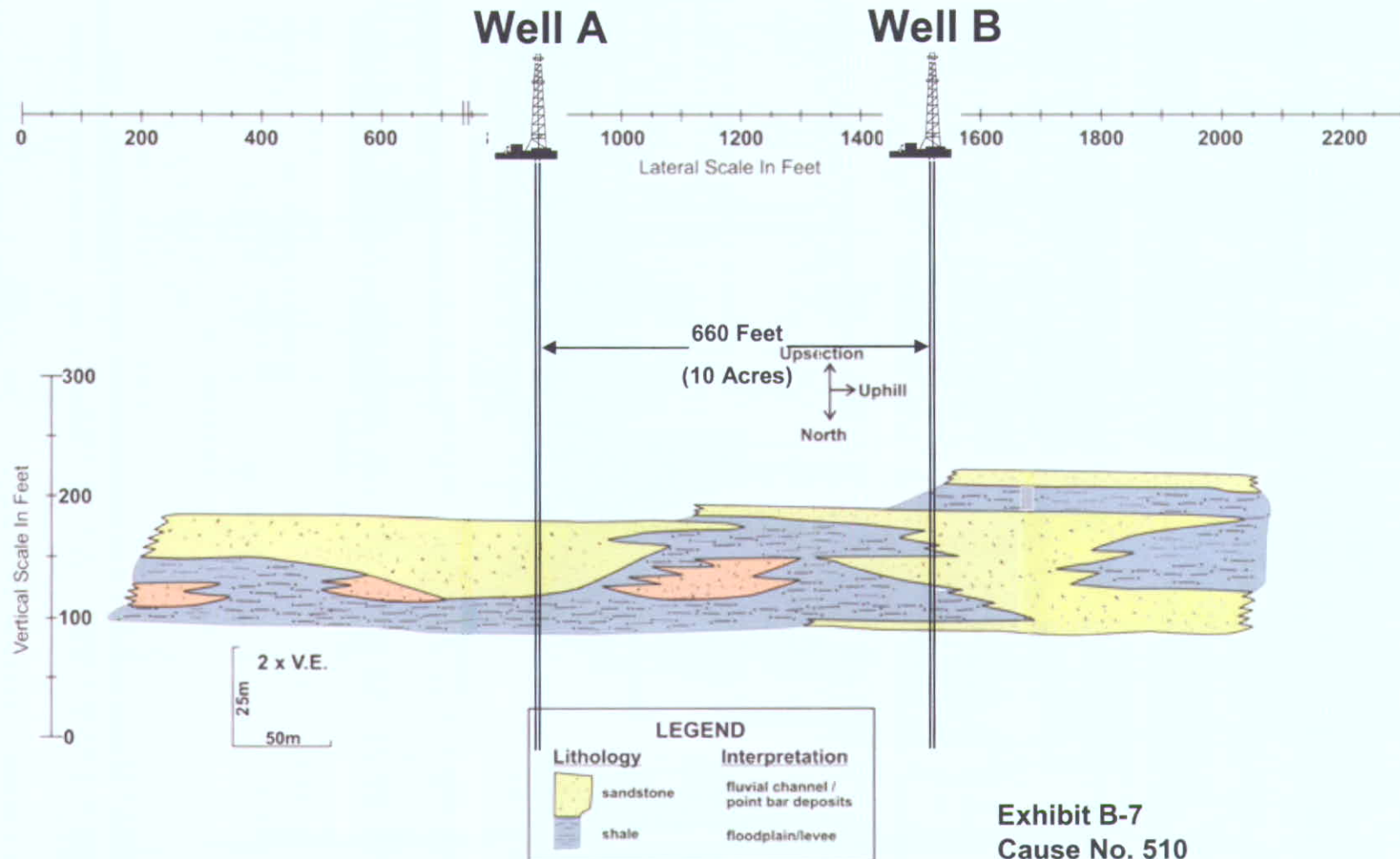


Exhibit B-8
Cause No. 510
Docket No. 0710-SP-28

Williams Fork Sandstone Bodies With Hypothetical 10-Acre Wells

Eastern Margin of Piceance Basin - Mesaverde Outcrop at Rifle Gap (near Rifle, Colorado)



Outcrop of lens 8, west side of Rifle Gap, modified from Lorenz, 1982 (Pg. 28, Fig. 12).

Exhibit B-7
Cause No. 510
Docket No. 0710-SP-28

A

SG 343-27
T7S R96W S27
5/24/2006
ELEV_KB : 5,037
TD : 5,100

306 ft.

SG 443-27
T7S R96W S27
5/31/2006
ELEV_KB : 5,036
TD : 5,140

342 ft.

A'

SG 543-27
T7S R96W S27
6/6/2006
ELEV_KB : 5,036
TD : 5,241

Williams Fork Formation

Cameo Coal Interval

Top of Gas

Top of Gas

Rollins Sandstone

Rollins Sandstone

B

SG 542-34
T7S R96W S34
12/23/2006
ELEV_KB : 5,077
TD : 4,996

322 ft.

SG 442-34
T7S R96W S34
12/16/2006
ELEV_KB : 5,077
TD : 5,160

B'

SG 342-34
T7S R96W S34
12/8/2006
ELEV_KB : 5,077
TD : 5,146

327 ft.

Williams Fork Formation

Top of Gas

Top of Gas

Cameo Coal Interval

Rollins Sandstone

Rollins Sandstone

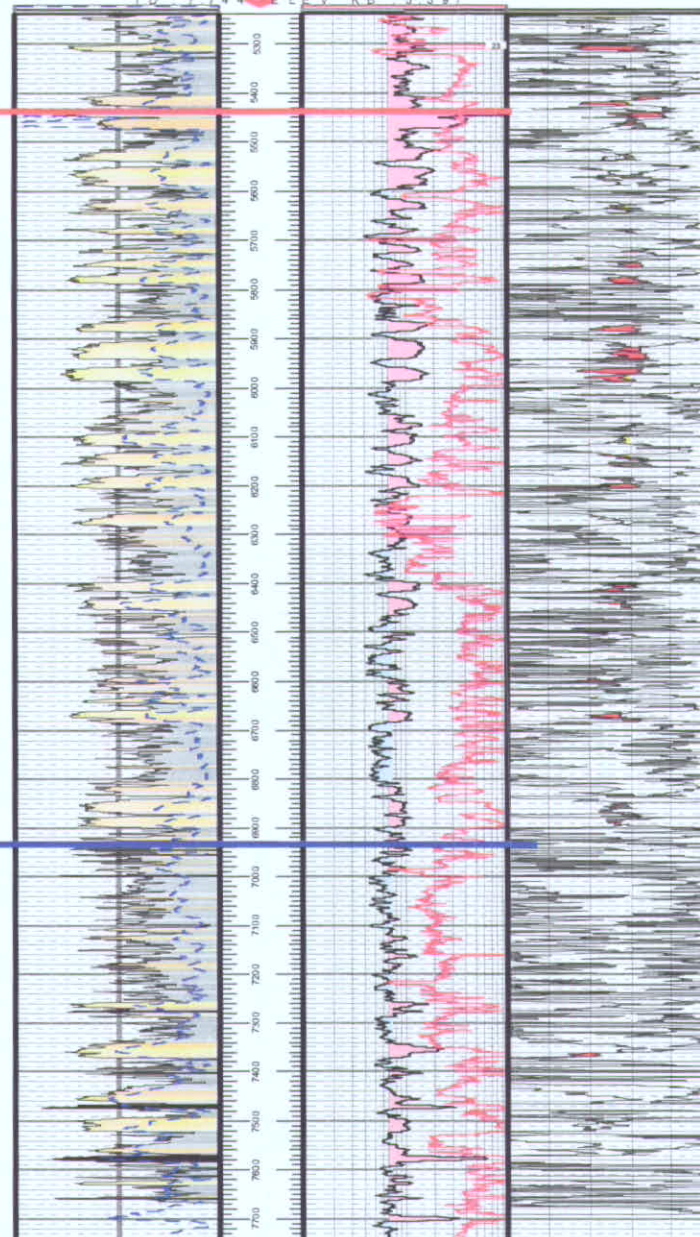
Pore Pressure Tests – All Sands Completed

↑
WILLIAMS FORK FORMATION

Top Gas Saturation

CAMEO FM TOP

R W F 4 3 3 - 2 0
T 6 S R 9 4 W S 2 0
T D 7 7 4 4 E L E V K B 5 3 9 7



Reservoir Pressure Results (Every sand tested that was completed)

2,516 psi – No Depletion
2,520 psi – No Depletion
2,522 psi – No Depletion
2,580 psi – No Depletion
2,597 psi – No Depletion
3,226 psi – No Depletion
3,297 psi – No Depletion
3,336 psi – No Depletion
2,931 psi – No Depletion
3,428 psi – No Depletion
1,987 psi – Partial Depletion
1,566 psi – Partial Depletion
3,242 psi – No Depletion
3,263 psi – No Depletion
2,793 psi – Partial Depletion
3,232 psi – No Depletion
3,020 psi – No Depletion
3,531 psi – No Depletion
Bad Test
4,104 psi – No Depletion
4,050 psi – No Depletion
4,123 psi – No Depletion
4,141 psi – No Depletion
4,534 psi – No Depletion
4,788 psi – No Depletion
4,813 psi – No Depletion
5,110 psi – No Depletion
5,234 psi – No Depletion
4,905 psi – No Depletion



ROLLINS MEMBER

Exhibit: C-5
Docket No.: 0710-SP-28
Cause No.: 510

Pore Pressure Tests – One Sand Per Frac Stage

RWF 534-20
T6S R94W S20
TD: 7,770' ELEV. KB: 5,355'

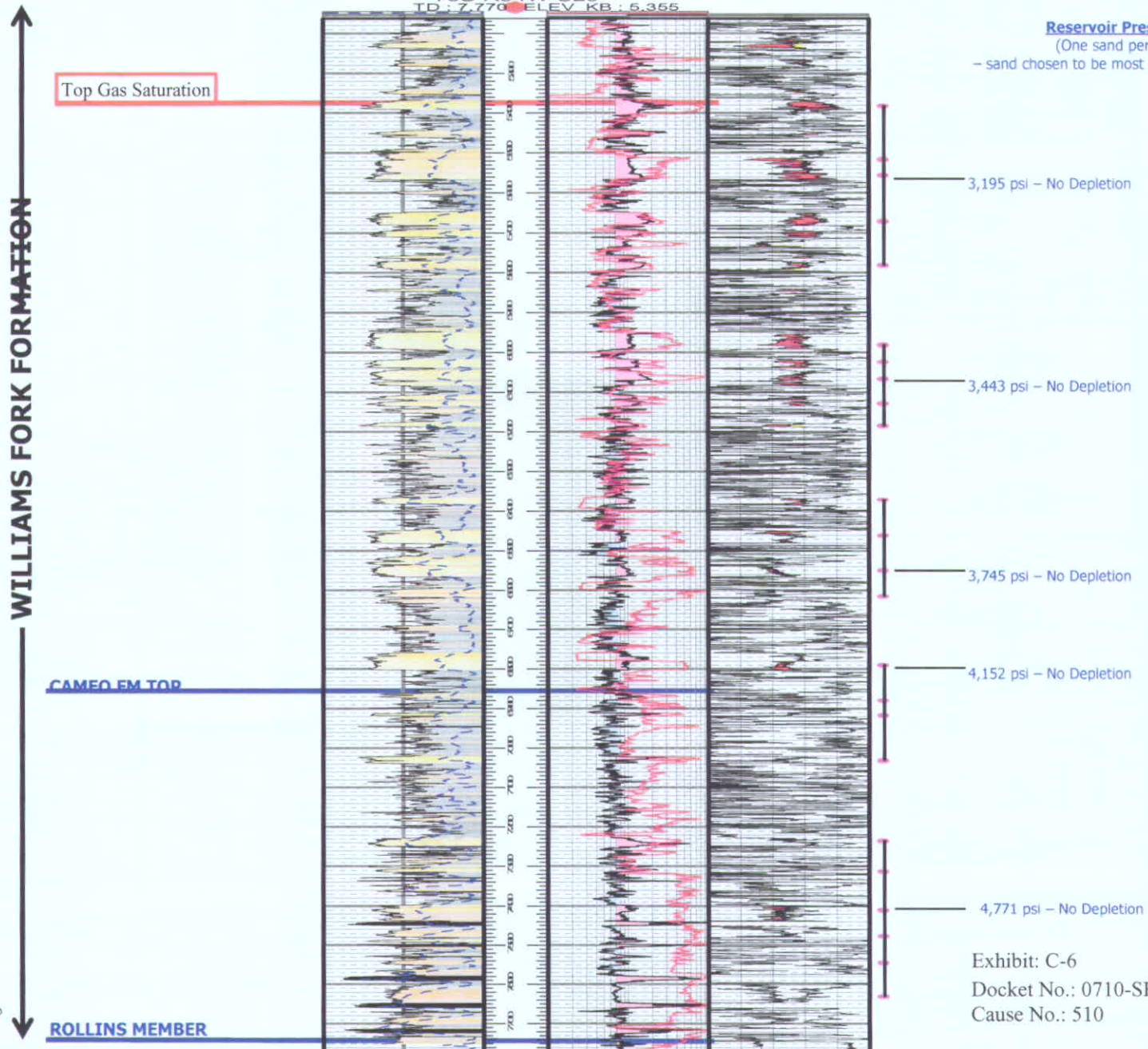


Exhibit: C-6
Docket No.: 0710-SP-28
Cause No.: 510

**Rulison Field 4-well Example (Sec 27-6S-94W)
10-acre Offsetting Production**

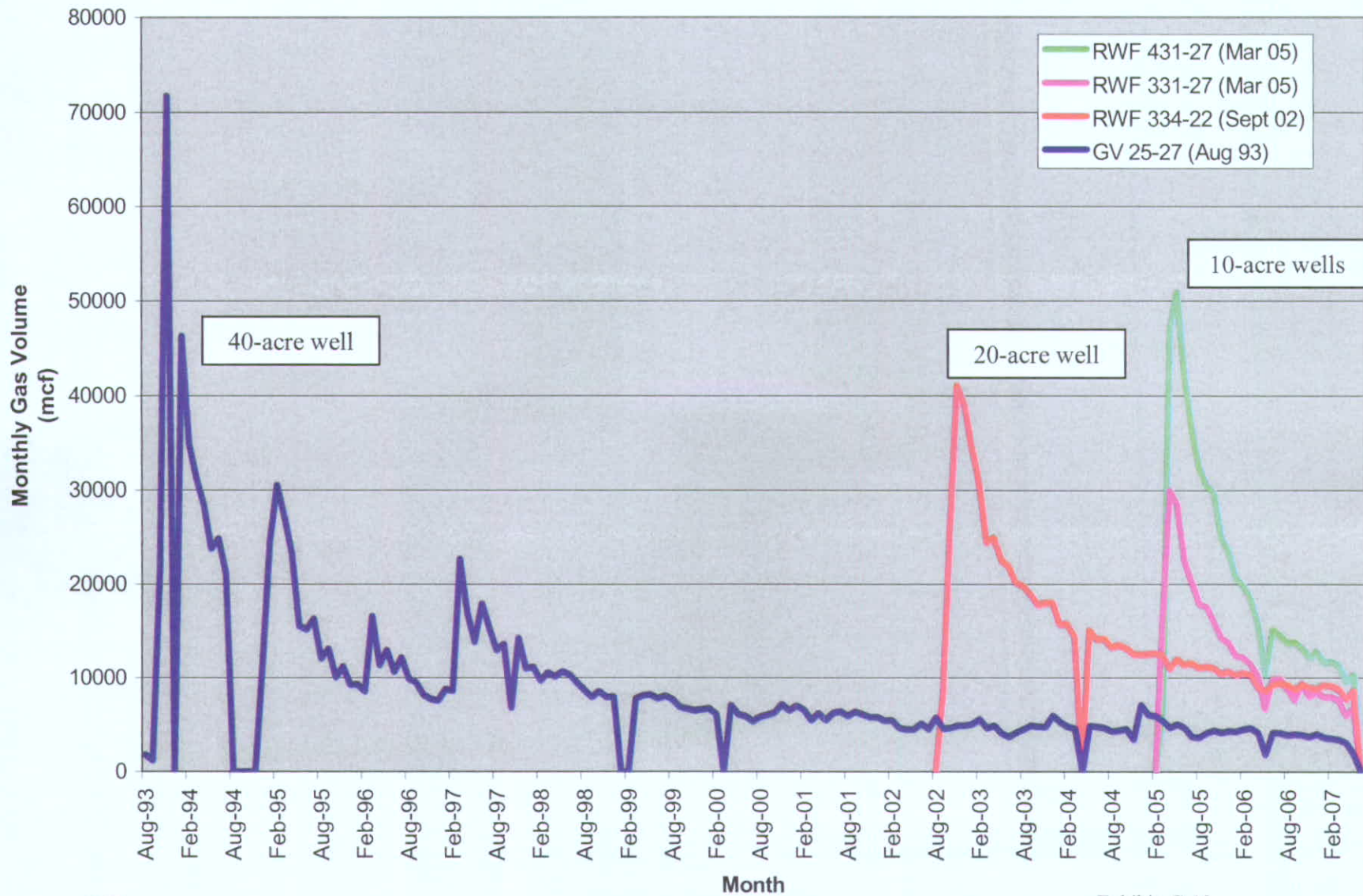


Exhibit: C-10
Docket No.: 0710-SP-28
Cause No.: 510

Grand Valley Field Average Monthly Production Comparison

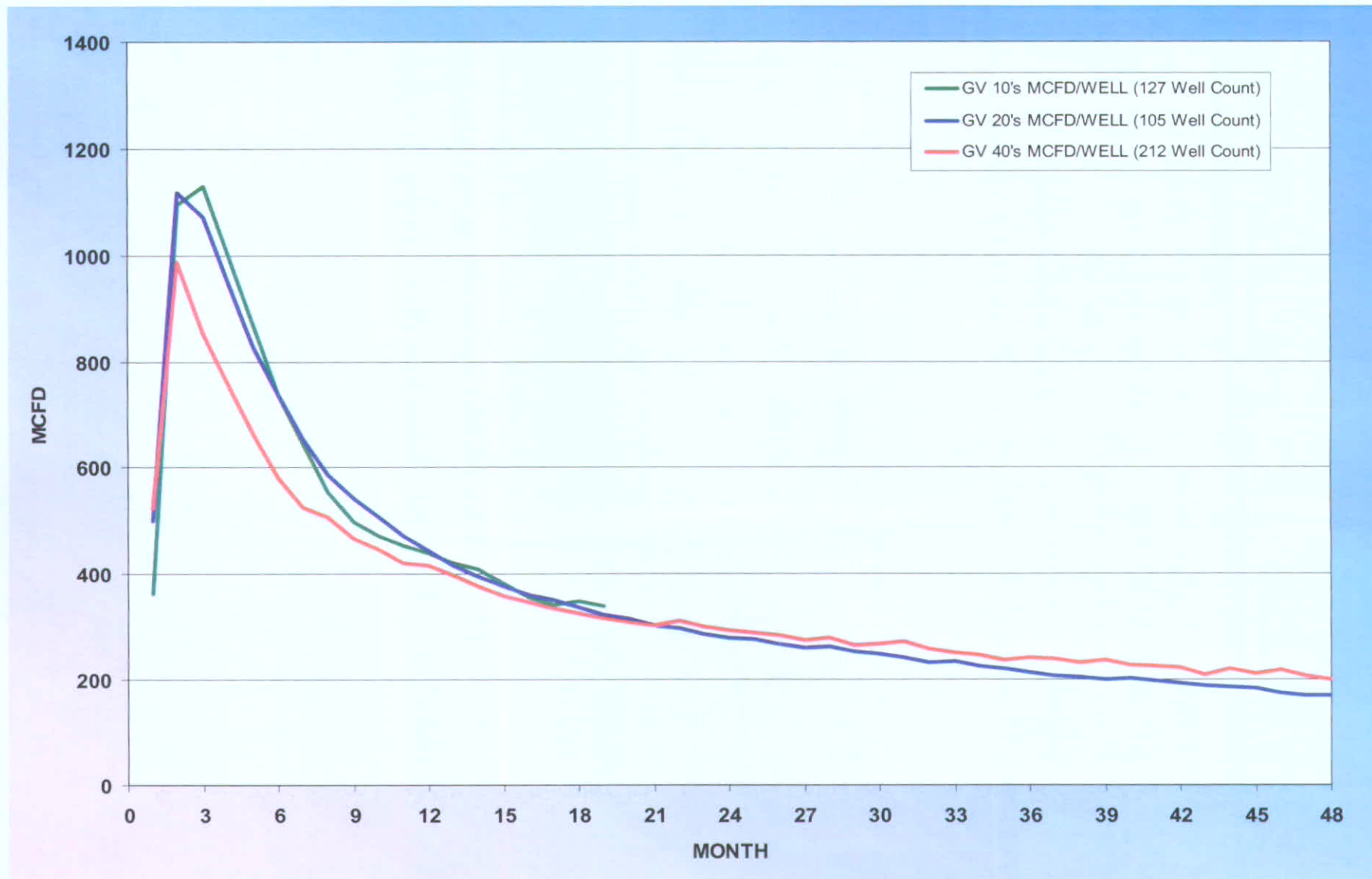


Exhibit: C-11
Docket No.: 0710-SP-28
Cause No.: 510

Parachute Field Average Monthly Production Comparison

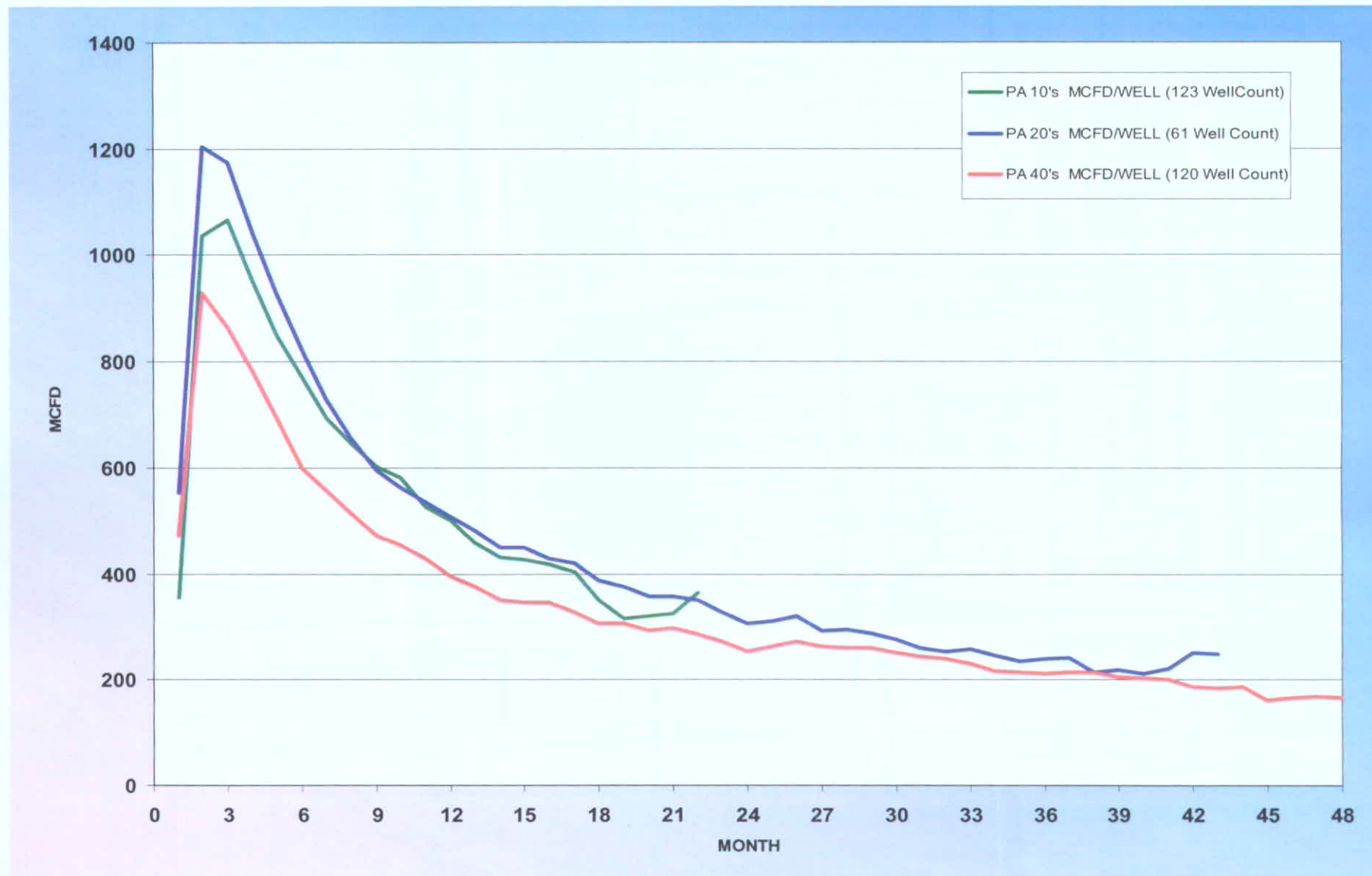


Exhibit: C-12
Docket No.: 0710-SP-28
Cause No.: 510

Rulison Field Average Monthly Production Comparison

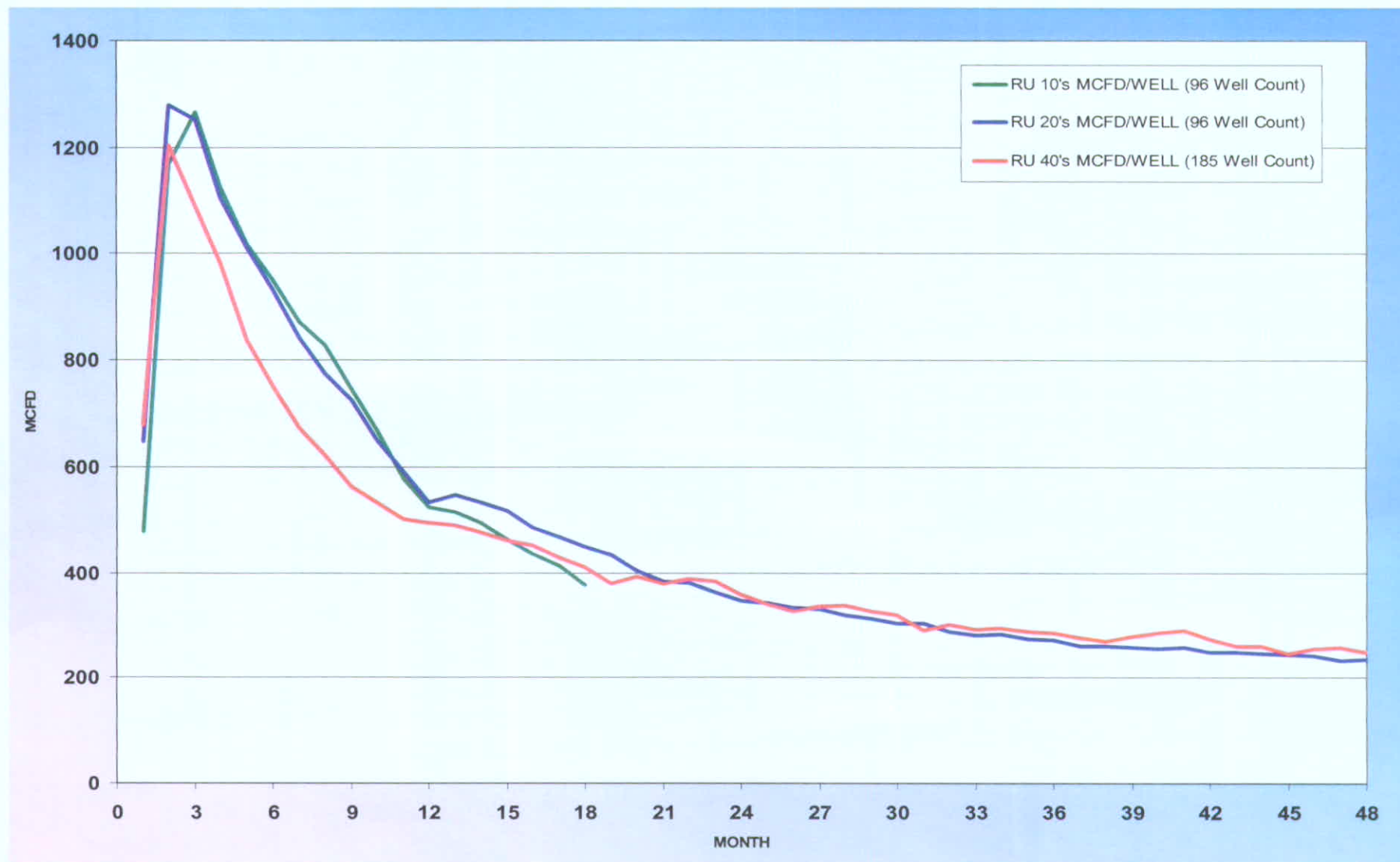


Exhibit: C-13
Docket No.: 0710-SP-28
Cause No.: 510